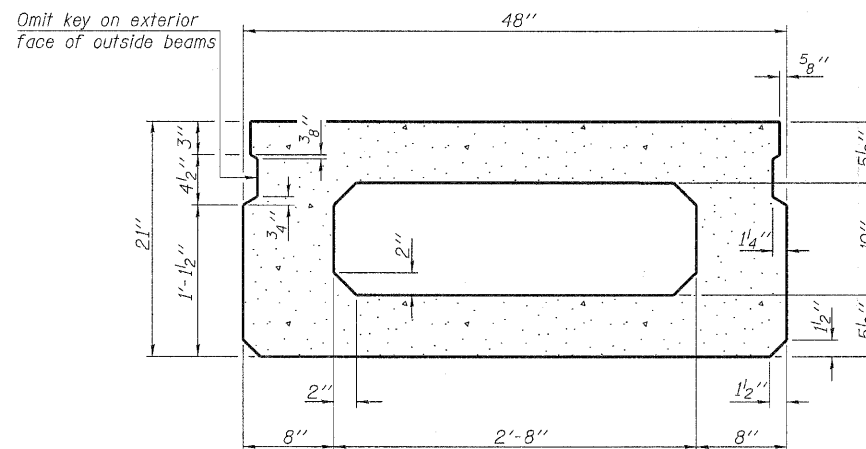
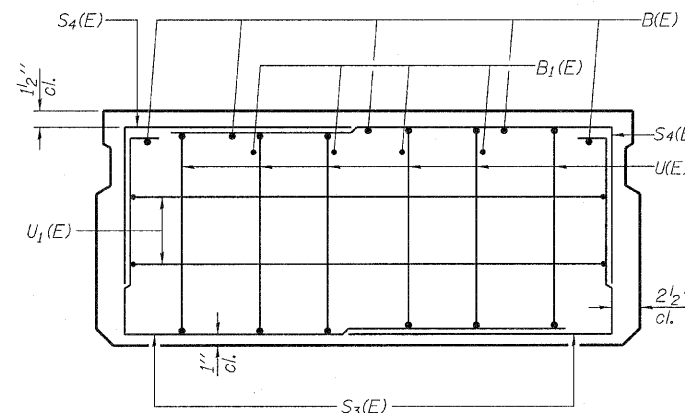


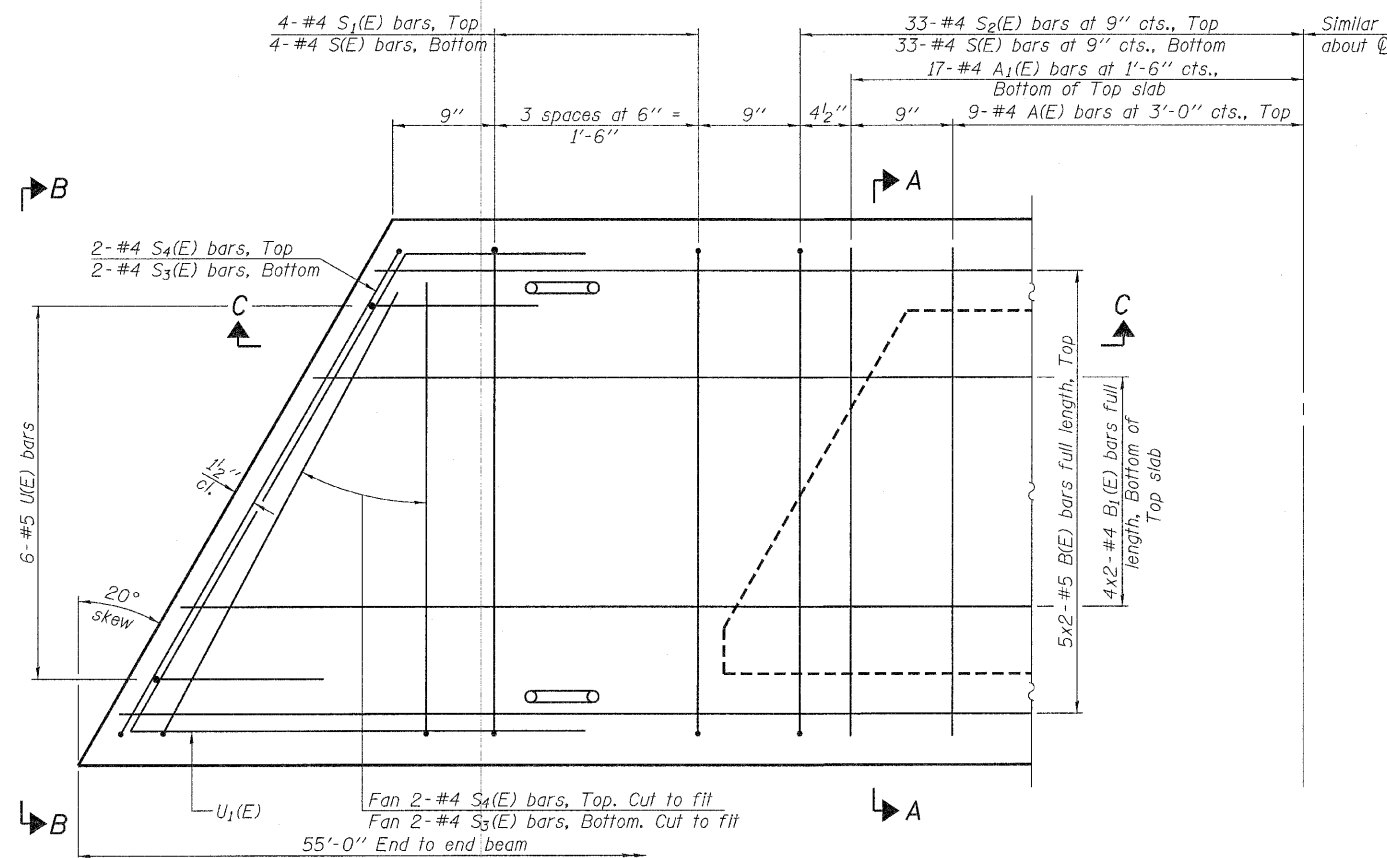
SECTION C-C



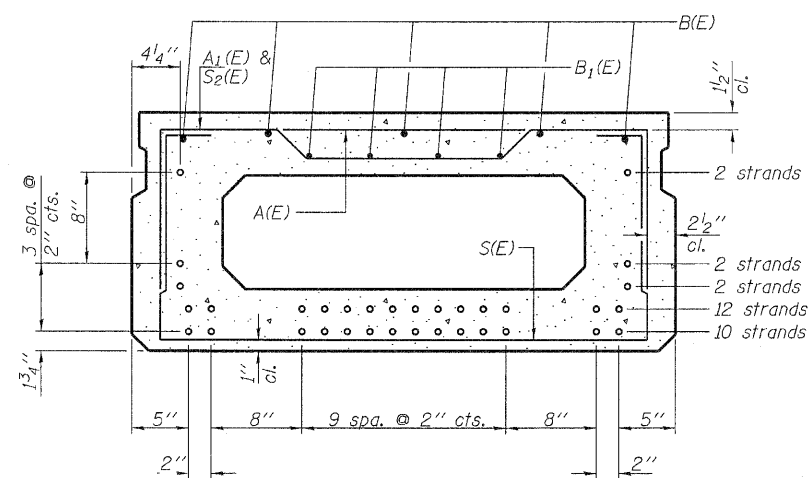
SECTION A-A
(Showing dimensions)



VIEW B-B



PLAN VIEW



SECTION A-A

(Showing reinforcement and permissible strand locations)

Note: Place the number of strands specified in each row symmetrically about the centerline of beam in the permissible strand locations shown.

BAR LIST
ONE BEAM ONLY
(For information only)

Bar	No.	Size	Length	Shape
A(E)	18	#4	3'-7"	—
A1(E)	34	#4	3'-10"	—
B(E)	10	#5	28'-8"	—
B1(E)	8	#4	28'-5"	—
S(E)	74	#4	7'-5"	U
S1(E)	8	#4	5'-11"	U
S2(E)	66	#4	6'-2"	U
S3(E)	8	#4	4'-9"	U
S4(E)	8	#4	4'-0"	U
U(E)	12	#5	4'-0"	U
U1(E)	4	#4	7'-6"	U

Note: See sheets 3 & 4 of 8 for additional details and Bill of Material.

MINIMUM BAR LAP

#4 bar = 2'-0"
#5 bar = 2'-6"

Notes:
Spacing of S(E) and S2(E) bars may be adjusted up to 4" in the immediate area of the transverse tie diaphragms to miss the block outs for the transverse ties.
Bars indicated thus 5x2-#4 etc. indicates 5 lines of bars with 2 lengths per line.

DESIGNED - A.S.L.
CHECKED - S.W.M.
DRAWN - D.A.B.
CHECKED - S.W.M.

PD-2148-L

11-1-09

HAMPTON, LENZINI AND RENWICK, INC.
CIVIL ENGINEERS • STRUCTURAL ENGINEERS • LAND SURVEYORS
3085 STEVENSON DRIVE, SUITE 201
SPRINGFIELD, ILLINOIS 62703
217.546.3400 www.hireengineering.com

164.00099
ILLINOIS PROFESSIONAL DESIGN FIRM LS / PE / SE CORPORATION

PROJECT NUMBER: 09.0007.130 DATE: 02/23/10

SHEET NO. 2 8 SHEETS	T.R.	SECTION	COUNTY	TOTAL SHEETS	SHEET NO.
	185	07-06115-00-BR	EDWARDS	12	6
ROAD DISTRICT #6			CONTRACT NO. 95633		
FED. ROAD DIST. NO.		ILLINOIS FED. AID PROJECT			

SUPERSTRUCTURE
21" X 48" PPC DECK BEAM
STRUCTURE NO. 024-3138