

SUMMARY OF QUANTITIES			CONSTRUCTION TYPE CODE																			
CODE NO	ITEM	UNIT	URBAN TOTAL QUANTITIES	ROADWAY 0004 STP FED 80% STATE 20%	ROADWAY 0004 STATE 100%	BIKE PATH 0028 CMAQ FED 80% VILLAGE 20% (MOUNT PROSPECT)	BIKE PATH 0028 CMAQ FED 80% VILLAGE 20% (DES PLAINES)	SIGNAL 0021 HSP FED 90% STATE 8% VILLAGE 2%	INTERCONNECT 0021 CMAQ FED 80% STATE 20%	EVP 0021 VILLAGE 100% (MOUNT PROSPECT)	LIGHTING 0021 VILLAGE 100% (MOUNT PROSPECT)	LIGHTING 0021 VILLAGE 100% (DES PLAINES)	TS PAINT 0021 VILLAGE 100% (MOUNT PROSPECT)									
20200100	EARTH EXCAVATION	CU YD	1047	972			75															
20101000	TEMPORARY FENCE	FOOT	300	300																		
20201200	REMOVAL AND DISPOSAL OF UNSUITABLE MATERIAL	CU YD	177	177																		
20101100	TREE TRUNK PROTECTION	EACH	30	30																		
20400800	FURNISHED EXCAVATION	CU YD	383	383																		
20800150	TRENCH BACKFILL	CU YD	1352	1352																		
21001000	GEOTECHNICAL FABRIC FOR GROUND STABILIZATION	SO YD	529	529																		
21101505	TOPSOIL EXCAVATION AND PLACEMENT	CU YD	1727	1727																		
* 25000210	SEEDING, CLASS 2A	ACRE	0.8	0.8																		
25000400	NITROGEN FERTILIZER NUTRIENT	POUND	44	44																		
25000600	POTASSIUM FERTILIZER NUTRIENT	POUND	44	44																		
25100630	EROSION CONTROL BLANKET	SO YD	3741	3741																		
25200110	SODDING, SALT TOLERANT	SO YD	3506	3506																		
25200200	SUPPLEMENTAL WATERING	UNIT	35	35																		
△ 28000250	TEMPORARY EROSION CONTROL SEEDING	POUND	75	75																		
28000510	INLET FILTERS	EACH	22	22																		
30300001	AGGREGATE SUBGRADE IMPROVEMENT	CU YD	177	177																		
													△ REVISED SHEET 9/7/2021		REV-SEP							
													* SPECIALTY ITEM									

FILE NAME =	USER NAME = diaza	DESIGNED -	REVISED -
ca\pw_wor\p\widat\diaza\0358214\F139513-stf-cover.dgn		DRAWN -	REVISED -
	PLOT SCALE = 100,0000' / 1in.	CHECKED -	REVISED -
	PLOT DATE = 7/8/2021	DATE -	REVISED -

**STATE OF ILLINOIS
DEPARTMENT OF TRANSPORTATION**

SUMMARY OF QUANTITIES

SCALE: SHEET NO. OF SHEETS STA. TO STA.

F.A.U. RTE.	SECTION	COUNTY	TOTAL SHEETS	SHEET NO.
3512	2019-006-N	COOK	146	4
CONTRACT NO. 62H87				
FED. ROAD DIST. NO. 1 (ILLINOIS) FED. AID PROJECT				

SUMMARY OF QUANTITIES			CONSTRUCTION TYPE CODE																			
CODE NO	ITEM	UNIT	URBAN TOTAL QUANTITIES	ROADWAY 0004 STP FED 80% STATE 20%	ROADWAY 0004 STATE 100%	BIKE PATH 0028 CMAQ FED 80% VILLAGE 20% (MOUNT PROSPECT)	BIKE PATH 0028 CMAQ FED 80% VILLAGE 20% (DES PLAINES)	SIGNAL 0021 HSP FED 90% STATE 8% VILLAGE 2%	INTERCONNECT 0021 CMAQ FED 80% STATE 20%	EVP 0021 VILLAGE 100% (MOUNT PROSPECT)	LIGHTING 0021 VILLAGE 100% (MOUNT PROSPECT)	LIGHTING 0021 VILLAGE 100% (DES PLAINES)	TS PAINT 0021 VILLAGE 100% (MOUNT PROSPECT)									
550A0050	STORM SEWERS, CLASS A, TYPE 1 12"	FOOT	113	113																		
550A0120	STORM SEWERS, CLASS A, TYPE 1 24"	FOOT	166	166																		
550A0140	STORM SEWERS, CLASS A, TYPE 1 30"	FOOT	778	778																		
550A4300	STORM SEWERS, CLASS A, TYPE 1 EQUIVALENT ROUND-SIZE 30"	FOOT	191	191																		
60108204	PIPE UNDERDRAINS, TYPE 2, 4"	FOOT	2800	2800																		
60203805	CATCH BASINS, TYPE A, 5' -DIAMETER, TYPE 1 FRAME, OPEN LID	EACH	5	5																		
60218300	MANHOLES, TYPE A, 4' -DIAMETER, TYPE 1 FRAME, OPEN LID	EACH	2	2																		
60218400	MANHOLES, TYPE A, 4' -DIAMETER, TYPE 1 FRAME, CLOSED LID	EACH	1	1																		
60221100	MANHOLES, TYPE A, 5' -DIAMETER, TYPE 1 FRAME, CLOSED LID	EACH	3	3																		
60224446	MANHOLES, TYPE A, 7' -DIAMETER, TYPE 1 FRAME, CLOSED LID	EACH	1	1																		
60224457	MANHOLES, TYPE A, 8' -DIAMETER, TYPE 1 FRAME, OPEN LID	EACH	1	1																		

1

REVISD SHEET 9/7/2021 REV-SEP
* SPECIALTY ITEM

FILE NAME =	USER NAME = diaza	DESIGNED -	REVISED -
ca\pw_wor\p\wid\diaza\d0368214\FI39513-stf-cover.dgn		DRAWN -	REVISED -
	PLOT SCALE = 100,0000' / 1in	CHECKED -	REVISED -
	PLOT DATE = 7/8/2021	DATE -	REVISED -

STATE OF ILLINOIS
DEPARTMENT OF TRANSPORTATION

SUMMARY OF QUANTITIES
SCALE: SHEET NO. OF SHEETS STA. TO STA.

F.A.U. RTE.	SECTION	COUNTY	TOTAL SHEETS	SHEET NO.
3512	2019-006-N	COOK	146	7
CONTRACT NO. 62H87				
FED. ROAD DIST. NO. 1 ILLINOIS FED. AID PROJECT				

SUMMARY OF QUANTITIES			CONSTRUCTION TYPE CODE																			
CODE NO	ITEM	UNIT	URBAN TOTAL QUANTITIES	ROADWAY 0004 STP FED 80% STATE 20%	ROADWAY 0004 STATE 100%	BIKE PATH 0028 CMAQ FED 80% VILLAGE 20% (MOUNT PROSPECT)	BIKE PATH 0028 CMAQ FED 80% VILLAGE 20% (DES PLAINES)	SIGNAL 0021 HSP FED 90% STATE 8% VILLAGE 2%	INTERCONNECT 0021 CMAQ FED 80% STATE 20%	EVP 0021 VILLAGE 100% (MOUNT PROSPECT)	LIGHTING 0021 VILLAGE 100% (MOUNT PROSPECT)	LIGHTING 0021 VILLAGE 100% (DES PLAINES)	TS PAINT 0021 VILLAGE 100% (MOUNT PROSPECT)									
* X1400211	LIGHT POLE, SPECIAL, 30'	EACH	1								1											
* X1400238	LUMINAIRE, LED, SPECIAL	EACH	6								6											
* X1400267	REMOVAL OF LIGHTING LUMINAIRE, NO SALVAGE	EACH	2								2											
* X1400367	PEDESTRIAN SIGNAL POST, 10 FT.	EACH	1					1														
△ X5537800	STORM SEWERS TO BE CLEANED 12"	FOOT	350		350																	
△ X6020299	MANHOLES, TYPE A, 8' -DIAMETER, WITH 2 TYPE 1 FRAME, OPEN LIDS, RESTRICTOR PLATE	EACH	1	1																		
X6030310	FRAMES AND LIDS TO BE ADJUSTED (SPECIAL)	EACH	25	25																		
X7010216	TRAFFIC CONTROL AND PROTECTION, (SPECIAL)	L SUM	1	1																		
X7030005	TEMPORARY PAVEMENT MARKING REMOVAL	SO FT	9003	9003																		
X7040125	PINNING TEMPORARY CONCRETE BARRIER	EACH	240	240																		
* X8040102	ELECTRIC SERVICE INSTALLATION, SPECIAL	EACH	1								1											
* X8250091	COMBINATION LIGHTING CONTROLLER	EACH	1								0.5	0.5										
* X8570215	FULL-ACTUATED CONTROLLER IN EXISTING CABINET	EACH	2						2													
* X8620200	UNINTERRUPTABLE POWER SUPPLY, SPECIAL	EACH	1					1														
* X8710024	FIBER OPTIC CABLE IN CONDUIT, NO. 62.5/125, MM12F SM24F	FOOT	4236						4236													
* X8780012	CONCRETE FOUNDATION, TYPE A 12-INCH DIAMETER	FOOT	4					4														

△ REVISION SHEET 9/7/2021 REV-SEP
 * SPECIALTY ITEM
 △ NON-PARTICIPATING ITEM

FILE NAME =	USER NAME = diazla	DESIGNED -	REVISED -
pw:\planroom\dtd\111\mof.gov\PI001\Documents\VDOT	Offices\District\Projects\PI39513\CADD\as\Design\PI39513-s	DRAWN -	REVISED -
		CHECKED -	REVISED -
		DATE -	REVISED -

**STATE OF ILLINOIS
DEPARTMENT OF TRANSPORTATION**

SUMMARY OF QUANTITIES

SCALE: SHEET NO. OF SHEETS STA. TO STA.

F.A.U. RTE.	SECTION	COUNTY	TOTAL SHEETS	SHEET NO.
3512	2019-006-N	COOK	146	19
CONTRACT NO. 62H87				
FED. ROAD DIST. NO. 1 ILLINOIS FED. AID PROJECT				

LOCATION		EARTH EXCAVATION	EARTH EXCAVATION ADJUSTED FOR SHRINKAGE 15%	FILL	EARTHWORK BALANCE WASTE (+) SHORTAGE (-)	TOPSOIL EXCAVATION STRIP DEPTH = VAR 12"	TOPSOIL EXCAVATION ADJUSTED FOR a(5)	TOPSOIL FILL DEPTH = VAR 4"	TOPSOIL BALANCE WASTE (+) SHORTAGE (-)
US 14									
FROM STATION	TO STATION	CUBIC YARD	CUBIC YARD	CUBIC YARD	CUBIC YARD	CUBIC YARD	CUBIC YARD	CUBIC YARD	CUBIC YARD
(1)		(2)	(3)	(4)	(5)	(6)	(7)	(8)	(9)
697-00	697+25	13	5	4	2	4	3	1	2
697-25	697+50	14	6	7	-1	11	3	2	1
697-50	698+00	38	14	15	-1	29	9	6	3
698-00	699+00	69	15	64	-50	74	12	15	-3
699-00	700+00	51	12	92	-80	96	39	16	23
700-00	701+00	52	21	71	-50	84	75	14	61
701-00	702+00	54	34	59	-25	84	78	14	64
702-00	703+00	57	49	72	-23	100	100	16	84
703-00	704+00	73	62	80	-17	124	124	19	105
704-00	705+00	112	95	50	45	118	118	15	103
705-00	706+00	97	82	27	55	70	70	9	60
706-00	707+00	46	39	25	14	35	35	10	26
707-00	707+23	8	7	5	2	8	8	3	5
SUB-TOTAL		684	442	570	-128	837	674	139	535

EARTH EXCAVATION SUMMARY		
	EARTHWORK BALANCE (CY) WASTE (+) SHORTAGE (-)	TOPSOIL BALANCE (CY) WASTE (+) SHORTAGE (-)
US 14	-128	535
Mt. Prospect	-241	145
TOTAL	-369	680

EARTHWORK NOTES:

- STATION RANGE
- CUT VOLUME
- CUT VOLUME ADJUSTED DUE TO 15% SHRINKAGE [CUT VOLUME - A(5) CLASSIFIED SOIL (IF APPLICABLE)] x 0.85
- FILL VOLUME
- COLUMN (4) MINUS COLUMN (3)
- TOPSOIL STRIPPING VOLUME
- TOPSOIL FILL VOLUME
- COLUMN (7) MINUS COLUMN (6)

LOCATION		EARTH EXCAVATION	EARTH EXCAVATION ADJUSTED FOR SHRINKAGE 15%	FILL	EARTHWORK BALANCE WASTE (+) SHORTAGE (-)	TOPSOIL EXCAVATION STRIP DEPTH = VAR 12"	TOPSOIL EXCAVATION ADJUSTED FOR a(5)	TOPSOIL FILL DEPTH = VAR 4"	TOPSOIL BALANCE WASTE (+) SHORTAGE (-)
MT. PROSPECT									
FROM STATION	TO STATION	CUBIC YARD	CUBIC YARD	CUBIC YARD	CUBIC YARD	CUBIC YARD	CUBIC YARD	CUBIC YARD	CUBIC YARD
(1)		(2)	(3)	(4)	(5)	(6)	(7)	(8)	(9)
US 14									
28+75	29+00	4	3	1	2	1	1	0	1
29+00	30+00	18	15	4	11	6	6	1	5
30+00	31+00	23	19	15	4	33	33	4	29
31+00	32+00	31	26	26	0	62	62	9	53
32+00	33+00	38	17	42	-24	92	56	17	38
33+00	34+00	73	5	34	-29	116	28	14	14
34+00	34+60	60	14	90	-76	106	20	5	14
34+60	35+00	34	7	67	-60	68	11	5	6
35+00	35+63	48	2	33	-31	61	0	7	-7
35+63	36+00	22	0	23	-23	41	0	5	-5
36+00	36+25	14	0	15	-15	31	0	4	-4
SUB-TOTAL		363	108	349	-241	617	216	71	145

MODEL: Default
FILE: \\p04110262.saw.bentley.com\PROJECTS\DOT Documents\DOT Offices\Bentley - 1\Projects\139513\CADD\Drawn\Design\139513-sch-schedule.dgn

USER NAME = dlazla	DESIGNED -	REVISED - 9/7/2021 ID
	DRAWN -	REVISED -
PLOT SCALE = 100.0000' / in.	CHECKED -	REVISED -
PLOT DATE = 9/7/2021	DATE -	REVISED -

**STATE OF ILLINOIS
DEPARTMENT OF TRANSPORTATION**

**SCHEDULE OF QUANTITIES
US 14 AT MT. PROSPECT**

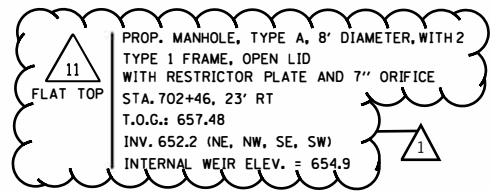
SCALE: SHEET OF SHEETS STA. TO STA.

F.A.U. RTE.	SECTION	COUNTY	TOTAL SHEETS	SHEET NO.
3512	2016-006-N	COOK	146	27
CONTRACT NO. 62H87				
ILLINOIS FED. AID PROJECT				

REVISED SHEET 9/7/2021

- 1 PROP. CATCH BASIN, TYPE A, 5' DIAMETER
TYPE 1 FRAME, OPEN LID
STA. 697+55, 33.8' LT
T.O.G.: 659.04
INV. 655.07 (E)
- 2 PROP. CATCH BASIN, TYPE A, 5' DIAMETER
TYPE 1 FRAME, OPEN LID (ADA COMPLIANT)
STA. 697+79, 49' LT
T.O.G.: 659.12
INV. 654.97 (SE,W)
- 3 PROP. MANHOLE, TYPE A, 4' DIAMETER
TYPE 1 FRAME, CLOSED LID
STA. 698+78, 25.3' LT
T.O.G.: 660.11
INV. 654.87 (NW)
INV. 654.87 (NE)
INV. 654.81 (SE)
- 4 PROP. MANHOLE, TYPE A, 5' DIAMETER
TYPE 1 FRAME, CLOSED LID
STA. 699+52, 25.8' LT
T.O.G.: 659.68
INV. 654.71 (NW)
INV. 654.71 (SE)
INV. 653.34 (SE)
- 5 PROP. MANHOLE, TYPE A, 5' DIAMETER
TYPE 1 FRAME, CLOSED LID
STA. 701+12, 27.5' LT
T.O.G.: 658.49
INV. 653.14 (NW)
INV. 653.14 (NE)
INV. 652.40 (SE)
- 6 PROP. MANHOLE, TYPE A, 7' DIAMETER
TYPE 1 FRAME, CLOSED LID
STA. 702+46, 27.5' LT
T.O.G.: 657.21
INV. 652.3 (NW, NE, SE, SW)
- 7 PROP. MANHOLE, TYPE A, 5' DIAMETER
TYPE 1 FRAME, CLOSED LID
STA. 704+40, 25.1' LT
T.O.G.: 656.20
INV. 652.35 (NW, NE, SE)
- 8 PROP. CATCH BASIN, TYPE A, 5' DIAMETER
TYPE 1 FRAME, OPEN LID
STA. 705+13, 34.9' LT
T.O.G.: 656.06
INV. 652.40 (NW)

- 9 PROP. MANHOLE, TYPE A, 4' DIAMETER
TYPE 1 FRAME, OPEN LID
STA. 699+81, 22.8' RT
T.O.G.: 659.33
INV. 653.38 (SE)
- 10 PROP. MANHOLE, TYPE A, 4' DIAMETER
TYPE 1 FRAME, OPEN LID
STA. 701+12, 23' RT
T.O.G.: 658.39
INV. 653.18 (NW)
INV. 652.30 (SE)



- 11 PROP. MANHOLE, TYPE A, 8' DIAMETER, WITH 2 TYPE 1 FRAME, OPEN LID WITH RESTRICTOR PLATE AND 7" ORIFICE
STA. 702+46, 23' RT
T.O.G.: 657.48
INV. 652.2 (NE, NW, SE, SW)
INTERNAL WEIR ELEV. = 654.9
- 12 PROP. CATCH BASIN, TYPE A, 5' DIAMETER
TYPE 1 FRAME, OPEN LID
STA. 704+24, 23' RT
T.O.G.: 656.32
INV. 652.35 (NW, SE)
- 13 PROP. CATCH BASIN, TYPE A, 5' DIAMETER
TYPE 1 FRAME, OPEN LID
STA. 705+24, 23' RT
T.O.G.: 656.26
INV. 652.45 (NW)

- 14 PROP. INLET, TYPE A
TYPE 1 FRAME, OPEN LID
STA. 698+78, 38.4 LT
T.O.G.: 659.76
INV. 654.98 (SW)
- 15 PROP. INLET, TYPE A
TYPE 1 FRAME, OPEN LID
STA. 699+52, 33.0' LT
T.O.G.: 659.50
INV. 654.76 (SW)
- 16 PROP. INLET, TYPE A
TYPE 1 FRAME, OPEN LID
STA. 701+12, 33' LT
T.O.G.: 658.35
INV. 653.17 (SW)
- 17 PROP. INLET, TYPE A
TYPE 1 FRAME, OPEN LID
STA. 702+46, 33.0' LT
T.O.G.: 657.13
INV. 652.32 (SW)
- 18 PROP. INLET, TYPE A
TYPE 1 FRAME, OPEN LID
STA. 704+40, 32.0' LT
T.O.G.: 656.01
INV. 652.4 (SW)

- 1 PROPOSED 24" RCP
- 2 PROPOSED 24" RCP (PARTIAL WATER QUALITY)
- 3 PROPOSED 24" RCP (PARTIAL WATER QUALITY)
- 4 PROPOSED 30" RCP
- 5 PROPOSED 30" RCP
- 6 PROPOSED 30" RCP EQUIVALENT ELLIPTICAL
- 7 PROPOSED 24" (WATER QUALITY)
- 8 PROPOSED 30" RCP
- 9 PROPOSED 30" RCP
- 10 PROPOSED 30" RCP
- 11 PROPOSED 24" RCP
- 12 PROPOSED 30" RCP
- 13 PROPOSED 12" RCP
- 14 PROPOSED 12" RCP
- 15 PROPOSED 12" RCP
- 16 PROPOSED 12" RCP
- 17 PROPOSED 12" RCP
- 18 PROPOSED 12" RCP

DRAINAGE PIPES TABLE				
NO.	DIA (IN)	LENGTH (FT)	SLOPE (%)	TRENCH BACKFILL (CY)
1	24	25	0.41%	22.7
2	24	98	0.10%	96.7
3	24	70	0.14%	72.6
4	30	157	0.13%	167.9
5	30	131	0.08%	117.7
6	30	191	-0.03%	134.5
7	24	70	-0.07%	35.7
8	30	128	0.16%	144.2
9	30	131	0.08%	141.7
10	30	46	0.22%	43.6
11	24	7	0.00%	5.2
12	30	185	-0.08%	155.6
13	12	87	-0.11%	46.1
14	12	11	1.00%	6.1
15	12	5	1.00%	2.8
16	12	3	1.00%	1.7
17	12	2	1.00%	1.1
18	12	5	1.00%	2.8

SHORTHAND AND SYMBOL LEGEND

- MH = MANHOLE
- CB = CATCH BASIN
- DIA. = DIAMETER, IN FEET
- F&G = FRAME AND GRATE
- F&L = FRAME AND LID
- CL = CLOSED LID
- OL = OPEN LID
- TYP. = TYPE
- STA. = STATION
- T.O.G. = TOP OF GRADE ELEVATION IN FEET
- INV. = INVERT ELEVATION IN FEET
- LT = OFFSET DISTANCE TO THE LEFT OF ALIGNMENT LINE, IN FEET
- RT = OFFSET DISTANCE TO THE RIGHT OF ALIGNMENT LINE, IN FEET

NOTES:

STORM SEWER OFFSET LOCATIONS GIVEN ON THE DETAIL PLANS ARE TO THE FOLLOWING POINTS:

- A) STRUCTURES FALLING WITHIN THE CURB LINE ARE MEASURED TO THE EDGE OF PAVEMENT.
- B) ALL OTHER STRUCTURES ARE MEASURED TO THE CENTER OF THE STRUCTURE.

THE INSTALLATION AND CONNECTION OF A PROPOSED STRUCTURE (CATCH BASIN/MANHOLE/INLET) OVER AN EXISTING STORM SEWER AND/OR A PROPOSED STORM SEWER CONNECTION TO AN EXISTING STRUCTURE, AND THE REMOVAL WORK REQUIRED TO MAKE THE CONNECTION WILL NOT BE PAID FOR SEPARATELY, BUT SHALL BE INCLUDED IN THE CONTRACT UNIT PRICE FOR THE ITEM BEING INSTALLED.

PIPE UNDERDRAINS SHALL BE INSTALLED ACCORDING TO SECTION 601 OF THE SSRBC AND STANDARD 601001-05. TOP OF PIPE UNDERDRAINS SHALL BE PLACED A MINIMUM OF 6" BELOW THE AGGREGATE SUBGRADE IMPROVEMENT LAYER. THE COST OF MAKING PIPE UNDERDRAIN CONNECTIONS TO DRAINAGE STRUCTURES SHALL BE INCLUDED IN THE COST OF THE PIPE UNDERDRAINS.

BACKFILLING STORM SEWER CONSTRUCTED UNDER THE ROADWAY SPECIFIED UNDER ARTICLE 550.07 (b, c) OF THE SSRBC WILL NOT BE ALLOWED.

DRAINAGE STRUCTURE ADJUSTMENTS WILL BE DETERMINED IN THE FIELD BY THE ENGINEER

FILE NAME =	USER NAME = d1e21e	DESIGNED -	REVISED - 9/2/2021 ID	STATE OF ILLINOIS DEPARTMENT OF TRANSPORTATION	DRAINAGE STRUCTURES AND PIPES U.S. ROUTE 14 AT MOUNT PROSPECT ROAD	F.A.U. RTE.	SECTION	COUNTY	TOTAL SHEETS	SHEET NO.
C:\Users\d1e21e\Desktop\62H87\62H87 P&P\PI139513-ah-t-drain.dgn	DRAWN -	REVISED -	3512			2019-006-N	COOK	146	50	
Default	CHECKED -	REVISED -	CONTRACT NO. 62H87							
PLOT SCALE = 100.0000' / in.	DATE -	REVISED -	ILLINOIS FED. AID PROJECT							