

STATE OF ILLINOIS
DEPARTMENT OF TRANSPORTATION

F.A.S. RTE	SECTION	COUNTY	TOTAL SHEETS	SHEET NO.
1780	24RS-5	CLINTON	10	1
		ILLINOIS	CONTRACT NO. 76P38	

FOR INDEX OF SHEETS, SEE SHEET NO. 2

TRAFFIC DATA

OLD US 50 (FROM BEGINNING OF PROJECT TO CARTER ST.)
2022 ADT = 5950 (ESTIMATED)
SU = 3.1% MU = 3.8%

OLD US 50 (FROM CARTER ST. TO END OF PROJECT)
2022 ADT = 4750 (ESTIMATED)
SU = 4.7% MU = 3.6%

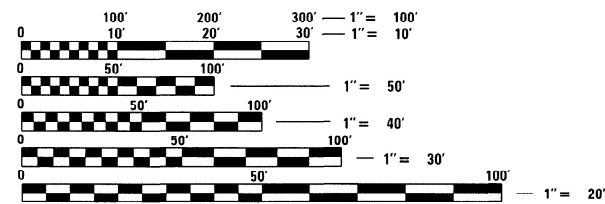
**PROPOSED
HIGHWAY PLANS**

FAS ROUTE 1780 (OLD US 50)
SECTION 24RS-5
PROJECT STP-ALCI(077)
SMART OVERLAY
CLINTON COUNTY

C-98-043-22

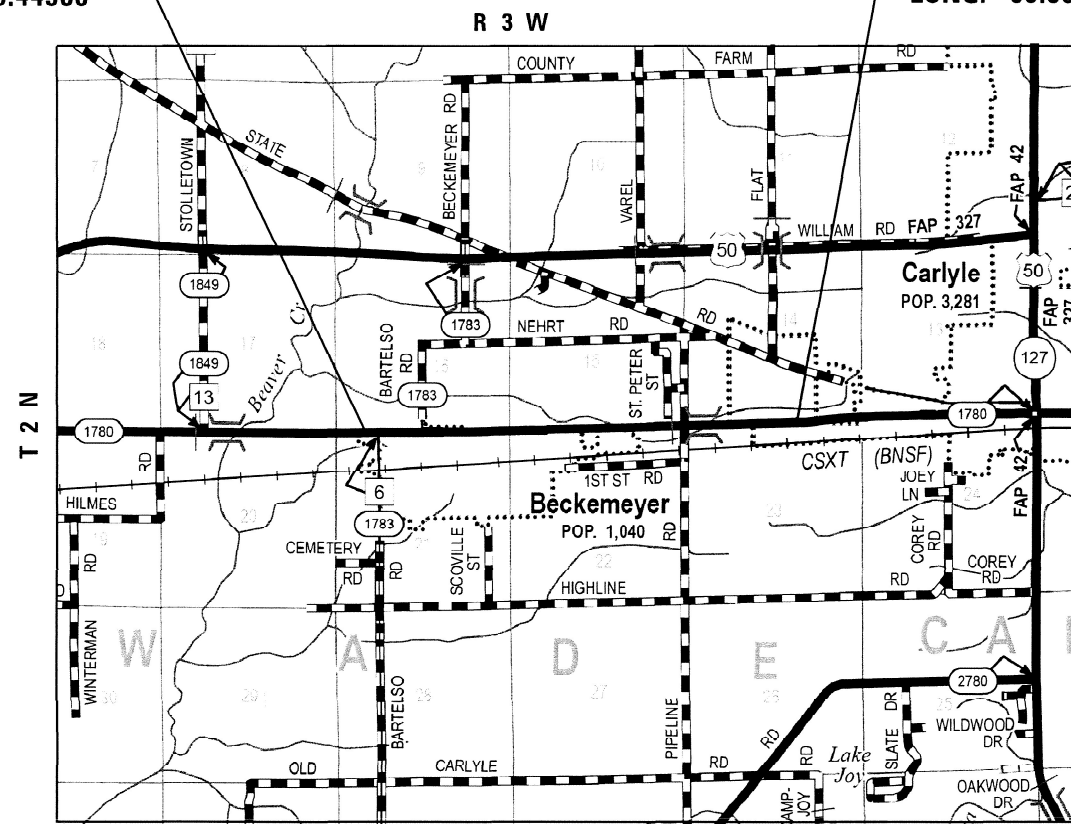
BEGIN PROJECT
STA. 10 + 00
LAT. 38.60910
LONG. -89.44586

END PROJECT
STA. 145 + 97
LAT. 38.60964
LONG. -89.39806



FULL SIZE PLANS HAVE BEEN PREPARED USING STANDARD ENGINEERING SCALES. REDUCED SIZED PLANS WILL NOT CONFORM TO STANDARD SCALES. IN MAKING MEASUREMENTS ON REDUCED PLANS, THE ABOVE SCALES MAY BE USED.

J.U.L.I.E.
JOINT UTILITY LOCATION INFORMATION FOR EXCAVATORS
1-800-892-0123
OR 811

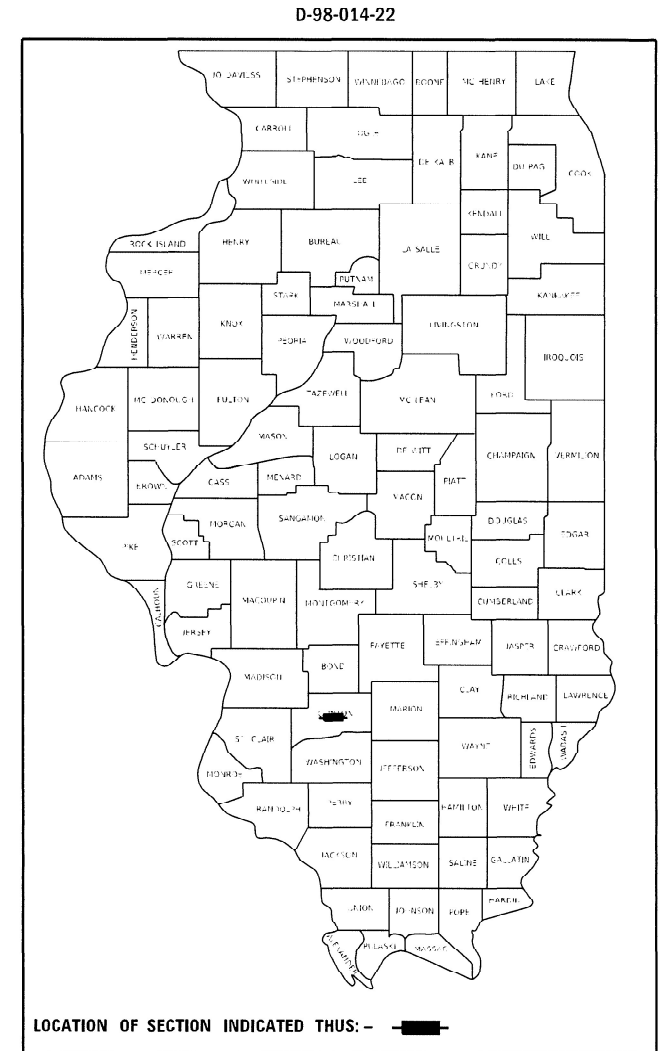


GROSS LENGTH = 13597.00 FT. = 2.575 MILE
NET LENGTH = 13597.00 FT. = 2.575 MILE

NOT TO SCALE

PROJECT ENGINEER: BILLIE OWEN (618) 346-3325
PROJECT MANAGER: PHILLIP FREIMUTH (618) 346-3194

CONTRACT NO. 76P38



STATE OF ILLINOIS
DEPARTMENT OF TRANSPORTATION

SUBMITTED *June 17 2021*
Kath Roberts
REGIONAL ENGINEER

August 13, 2021
Scott A. Etk
ENGINEER OF DESIGN AND ENVIRONMENT

August 13, 2021
James J. ...
DIRECTOR OF HIGHWAYS PROJECT IMPLEMENTATION

PRINTED BY THE AUTHORITY
OF THE STATE OF ILLINOIS

INDEX OF SHEETS

- 1 COVER SHEET
- 2 INDEX OF SHEETS, HIGHWAY STANDARDS, GENERAL NOTES AND COMMITMENTS
- 3 SUMMARY OF QUANTITIES
- 4 TYPICAL SECTIONS
- 5 - 6 SCHEDULE OF QUANTITIES
- 7 - 8 SURVEY MONUMENTS
- 9 LOCATION MAP
- 10 MISCELLANEOUS DETAILS

HIGHWAY STANDARDS

- 000001-08 STANDARD SYMBOLS, ABBREVIATIONS AND PATTERNS
- 001001-02 AREAS OF REINFORCEMENT BARS
- 001006 DECIMAL OF AN INCH AND OF A FOOT
- 420701-03 PAVEMENT WELDED WIRE REINFORCEMENT
- 442101-09 CLASS B PATCHES
- 701011-04 OFF-ROAD MOVING OPERATIONS, 2L, 2W, DAY ONLY
- 701201-05 LANE CLOSURE, 2L, 2W, DAY ONLY, FOR SPEEDS ≥ 45 MPH
- 701301-04 LANE CLOSURE, 2L, 2W, SHORT TIME OPERATIONS
- 701306-04 LANE CLOSURE, 2L, 2W, SLOW MOVING OPERATIONS, DAY ONLY, FOR SPEEDS ≥ 45 MPH
- 701311-03 LANE CLOSURE, 2L, 2W, MOVING OPERATIONS - DAY ONLY
- 701336-07 LANE CLOSURE, 2L, 2W, WORK AREAS IN SERIES, FOR SPEEDS ≥ 45 MPH
- 701501-06 URBAN LANE CLOSURE, 2L, 2W, UNDIVIDED
- 701901-08 TRAFFIC CONTROL DEVICES
- 780001-05 TYPICAL PAVEMENT MARKINGS
- 781001-04 TYPICAL APPLICATIONS RAISED REFLECTIVE PAVEMENT MARKERS

GENERAL NOTES

1. UTILITIES KNOWN TO HAVE FACILITIES WITHIN THE PROJECT AREA ARE AS FOLLOWS:
 AMEREN ILLINOIS
 AT&T ILLINOIS
 VILLAGE OF BECKEMEYER
 CHARTER COMMUNICATIONS, INC.
 CLEARWAVE COMMUNICATIONS
 CLINTON COUNTY ELECTRIC COOPERATIVE, INC.
 METRO
 NATURAL GAS PIPELINE COMPANY OF AMERICA
2. NO SURVEY WAS PERFORMED FOR THIS PROJECT AND THE PLANS WERE CREATED USING MICROFILM.
3. THE USE OF VIBRATORY ROLLERS WILL NOT BE PERMITTED WITHIN THE CITY LIMITS OF BECKEMEYER. THIS DOES NOT RELIEVE THE CONTRACTOR OF DENSITY REQUIREMENTS FOR THE CONSTRUCTION OF THE BITUMINOUS PAVEMENTS AS SPECIFIED IN SECTIONS 406 & 407 OF THE STANDARD SPECIFICATIONS
4. THE PROPOSED PAVEMENT MARKING SHALL MATCH THE LOCATIONS OF THE EXISTING PAVEMENT MARKING, AS DIRECTED BY THE ENGINEER.
5. TWO CHANGEABLE MESSAGE SIGNS SHALL BE REQUIRED FOR THIS PROJECT. THEY SHALL BE PLACED 1 WEEK PRIOR TO ANY LANE CLOSURES. THE CHANGEABLE MESSAGE SIGNS SHALL BE PLACED ALONG OLD US 50 AT THE DIRECTION OF THE ENGINEER.
6. ALL TURF AREAS DISTURBED BY THE CONTRACTOR SHALL BE SEEDED WITH THE APPROPRIATE EROSION CONTROL, AS DIRECTED BY THE ENGINEER, AT THE CONTRACTOR'S EXPENSE.
7. ONLY SHORT TERM PAVEMENT MARKING REMOVAL FROM THE FINAL SURFACE SHALL BE PAID FOR AS "SHORT TERM PAVEMENT MARKING REMOVAL."
8. NO OVERNIGHT LANE CLOSURES WILL BE PERMITTED.

MIXTURE REQUIREMENTS

THE FOLLOWING MIXTURE REQUIREMENTS ARE APPLICABLE FOR THIS PROJECT

LOCATION:	OLD US 50				
MIXTURE USE(S):	SURFACE				
AC/PG	PG 64-22				
RAP % (MAX)	SEE SPECIAL PROVISION				
DESIGN AIR VOIDS:	4.0% @ NDES = 70				
MIX COMPOSITION (GRADATION)	IL 9.5				
FRICTION AGGREGATE	MIXTURE "D"				
QUALITY MGMT PROGRAM	QCP				

PLAN QUANTITIES FOR BITUMINOUS CONCRETE SURFACE COURSE ITEMS ARE CALCULATED USING A UNIT WEIGHT OF 112 LB/SQ YD/IN

COMMITMENTS

NONE

MODEL: Default
 FILE NAME: \\paulamr.com\data\illinois\gov\PIWDOT\Documents\DOT_Offices\District 8\Projects\0876938\CADD\data\CADProcess\0876938-ht-geomacs.dgn

USER NAME = smichma	DESIGNED -	REVISED -	STATE OF ILLINOIS DEPARTMENT OF TRANSPORTATION	INDEX OF SHEETS, HIGHWAY STANDARDS, GENERAL NOTES AND COMMITMENTS	F.A.S. RTE.	SECTION	COUNTY	TOTAL SHEETS	SHEET NO.
PLOT SCALE = 100,0000' / in.	DRAWN -	REVISED -			1780	24R5-5	CLINTON	10	2
PLOT DATE = 6/24/2021	CHECKED -	REVISED -			CONTRACT NO. 76P38				
	DATE -	REVISED -			SCALE:		SHEET 1 OF 1 SHEETS	STA.	TO STA.

CODE NO.	ITEM	UNIT	TOTAL QUANTITY	CONSTR. CODE
				80% FED 20% STATE
				ROADWAY 0005
				RURAL
40600290	BITUMINOUS MATERIALS (TACK COAT)	POUND	16996	16996
40600990	TEMPORARY RAMP	SQ YD	28	28
40604062	HOT-MIX ASPHALT SURFACE COURSE, 1L-9.5, MIX "D", N70	TON	3173	3173
44000155	HOT-MIX ASPHALT SURFACE REMOVAL, 1 1/2"	SQ YD	37770	37770
44200050	WELDED WIRE REINFORCEMENT	SQ YD	173	173
44201019	CLASS B PATCHES, TYPE II, 14 INCH	SQ YD	14	14
44201023	CLASS B PATCHES, TYPE III, 14 INCH	SQ YD	110	110
44201025	CLASS B PATCHES, TYPE IV, 14 INCH	SQ YD	63	63
44201297	DOWEL BARS 1"	EACH	176	176
44213200	SAW CUTS	FOOT	464	464
44213204	TIE BARS 3/4"	EACH	8	8
48102100	AGGREGATE WEDGE SHOULDER, TYPE B	TON	387	387
67100100	MOBILIZATION	L SUM	1	1
70100450	TRAFFIC CONTROL AND PROTECTION, STANDARD 701201	L SUM	1	1

CODE NO.	ITEM	UNIT	TOTAL QUANTITY	CONSTR. CODE
				80% FED 20% STATE
				ROADWAY 0005
				RURAL
70100460	TRAFFIC CONTROL AND PROTECTION, STANDARD 701306	L SUM	1	1
70100600	TRAFFIC CONTROL AND PROTECTION, STANDARD 701336	L SUM	1	1
70102620	TRAFFIC CONTROL AND PROTECTION, STANDARD 701501	L SUM	1	1
70107025	CHANGEABLE MESSAGE SIGN	CAL DA	14	14
70300100	SHORT TERM PAVEMENT MARKING	FOOT	2919	2919
70300150	SHORT TERM PAVEMENT MARKING REMOVAL	SQ FT	487	487
70300230	TEMPORARY PAVEMENT MARKING - LINE 5"	FOOT	32390	32390
* 78000300	THERMOPLASTIC PAVEMENT MARKING - LINE 5"	FOOT	32390	32390
* 78100100	RAISED REFLECTIVE PAVEMENT MARKER	EACH	170	170
78300200	RAISED REFLECTIVE PAVEMENT MARKER REMOVAL	EACH	170	170
X7030005	TEMPORARY PAVEMENT MARKING REMOVAL	SQ FT	13496	13496
Z0033700	LONGITUDINAL JOINT SEALANT	FOOT	13597	13597
Z0034105	MATERIAL TRANSFER DEVICE	TON	3173	3173
Z0070100	SURVEY MONUMENT COVER ASSEMBLY	EACH	4	4

* SPECIALTY ITEM

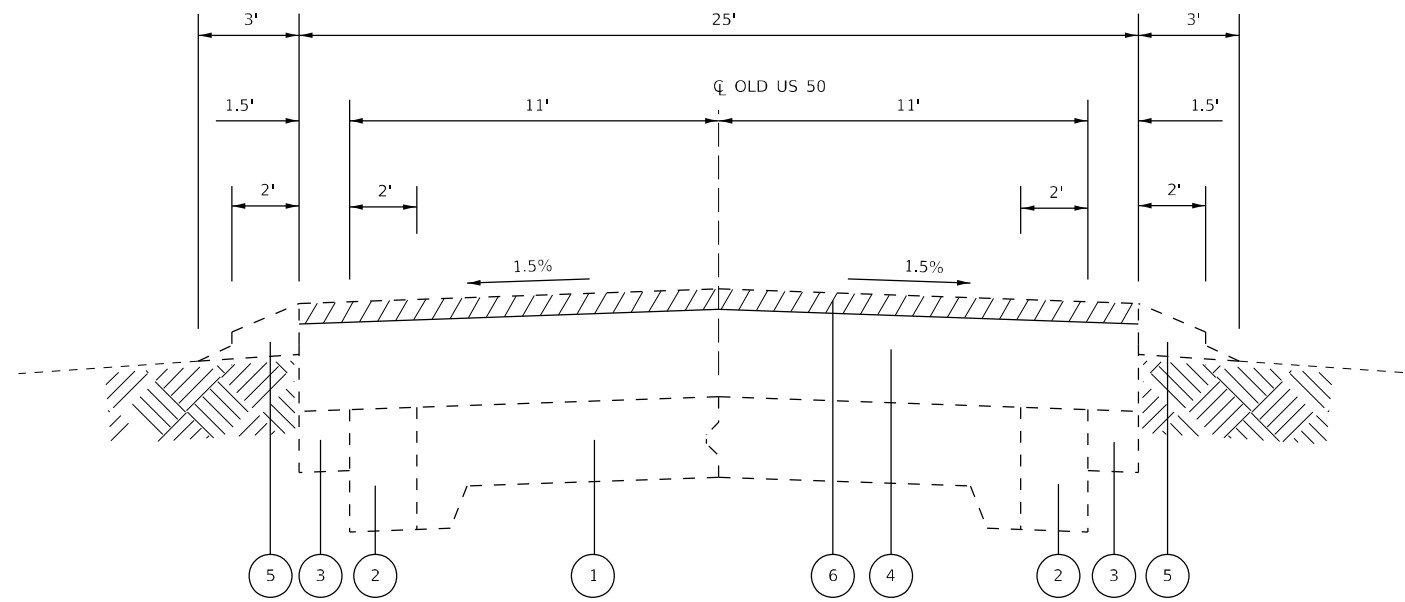
USER NAME = smichma	DESIGNED -	REVISED -
	DRAWN -	REVISED -
PLOT SCALE = 100,0000' / in.	CHECKED -	REVISED -
PLOT DATE = 6/15/2021	DATE -	REVISED -

**STATE OF ILLINOIS
DEPARTMENT OF TRANSPORTATION**

SUMMARY OF QUANTITIES

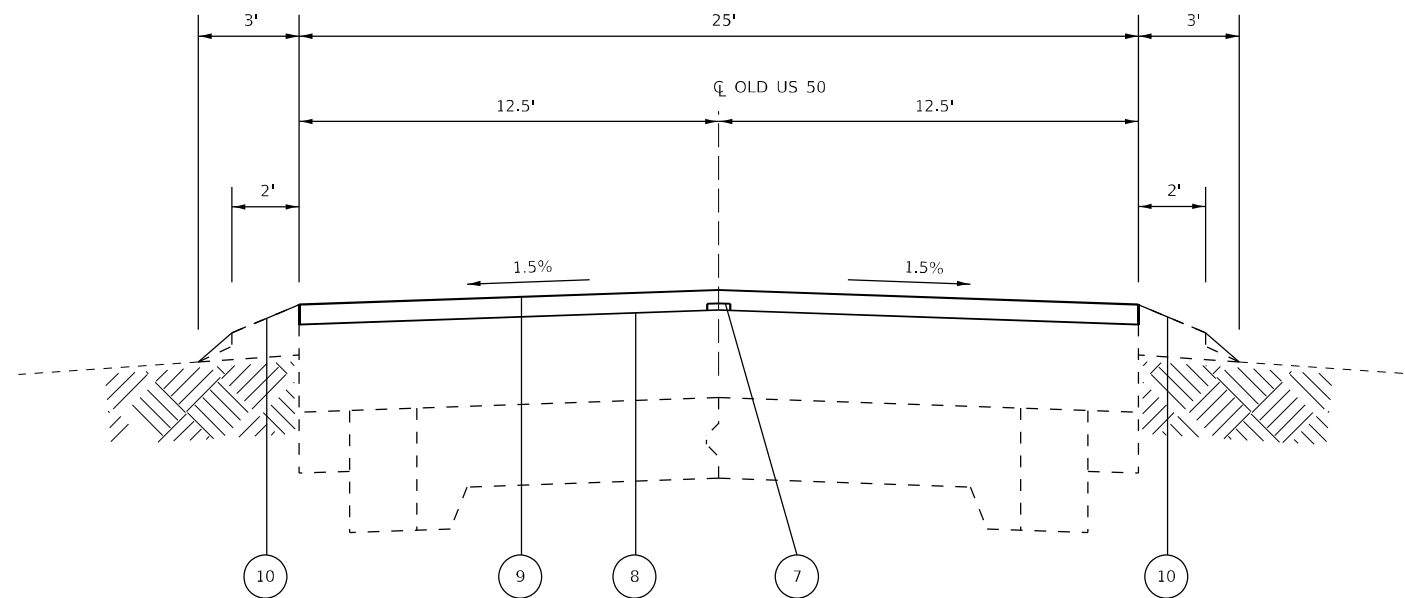
SCALE: SHEET 1 OF 1 SHEETS STA. TO STA.

F.A.S. RTE.	SECTION	COUNTY	TOTAL SHEETS	SHEET NO.
1780	24RS-5	CLINTON	10	3
CONTRACT NO. 76P38				ILLINOIS FED. AID PROJECT



EXISTING TYPICAL SECTION

STA. 10+00 TO STA. 145+97



PROPOSED TYPICAL SECTION

STA. 10+00 TO STA. 145+97

LEGEND

- ① EXISTING PCC PAVEMENT (9"-6"-9")
- ② EXISTING PCC WIDENING
- ③ EXISTING BIT WIDENING
- ④ EXISTING BIT RESURFACING (8"±)
- ⑤ EXISTING AGG WEDGE SHLD, TYPE B
- ⑥ PROPOSED HMA SURFACE REMOVAL, 1 1/2"
- ⑦ PROPOSED HMA LONGITUDINAL JOINT SEALANT
- ⑧ PROPOSED BITUMINOUS MATERIAL (TACK COAT)
- ⑨ PROPOSED HMA SURFACE COURSE, MIX D, N70, 1 1/2"
- ⑩ PROPOSED AGG WEDGE SHLD, TYPE B

MODEL: Default
 FILE NAME: p:\pub\mroom.dwt\illinois.gov\PWIDOT\Documents\DOT_Offices\District 8\Projects\0876938\CADD\DATA\CAD\Process\0876938-01-typical.dgn

USER NAME = smichma	DESIGNED -	REVISED -
	DRAWN -	REVISED -
PLOT SCALE = 100,0000' / in.	CHECKED -	REVISED -
PLOT DATE = 6/11/2021	DATE -	REVISED -

**STATE OF ILLINOIS
DEPARTMENT OF TRANSPORTATION**

TYPICAL SECTIONS

SCALE: NTS SHEET 1 OF 1 SHEETS STA. TO STA.

F.A.S. RTE.	SECTION	COUNTY	TOTAL SHEETS	SHEET NO.
1780	24R5-5	CLINTON	10	4
CONTRACT NO. 76P38				
ILLINOIS FED. AID PROJECT				

RESURFACING AND AGGREGATE SHOULDER SCHEDULE							
LOCATION			HMA SURFACE REMOVAL, 1 1/2"	BITUMINOUS MATERIAL (TACK COAT)	HMA SURFACE COURSE, IL-9.5, MIX "D", N70	LONGITUDINAL JOINT SEALANT	AGGREGATE WEDGE SHOULDER, TYPE B
STATION	TO	STATION	SQ YD	POUND	TON	FOOT	TON
OLD US 50							
10+00	TO	145+97	37770	16996	3173	13597	387
TOTAL			37770	16996	3173	13597	387

PAVEMENT MARKING SCHEDULE														
LOCATION			NO PASSING ZONE	THERMOPLASTIC & TEMPORARY PAVEMENT MARKING			TEMPORARY PAVEMENT MARKING REMOVAL	SHORT TERM PAVEMENT MARKING (2 LIFTS)	SHORT TERM PAVEMENT MARKING REMOVAL	RAISED REFLECTIVE PAVEMENT MARKER REMOVAL	RAISED REFLECTIVE PAVEMENT MARKERS (TWO-WAY AMBER)			
				5" YELLOW	5" YELLOW	5" WHITE								
STATION	TO	STATION	RT/LT	SKIP DASH	SOLID	SOLID	SQ FT	FOOT	SQ FT	EACH	EACH			
OLD US 50														
10+00	TO	69+29					1482		11321	5335	1078	180		
69+29		75+05	NPZ RT				144	576	1152	780	209	35		
75+05		79+70					116		930	436	85	14		
79+70		85+87	NPZ LT				154	617	1234	836	224	37		
85+87		93+79					198		1584	743	144	24		
93+79		100+34	NPZ RT				164	655	1310	887	238	40		
100+34		103+88					89		708	332	64	11		
103+88		110+00	NPZ LT				153	612	1224	829	223	37		
110+00		145+97					899		7068	3320	654	109		
SUBTOTAL							3399	2460	26531	13496	2919	487	170	170
TOTAL							32390			13496	2919	487	170	170

TEMPORARY RAMP SCHEDULE		
LOCATION		TEMPORARY RAMP
STATION		SQ YD
OLD US 50		
10+00	BEGIN PROJECT	14
145+97	END PROJECT	14
TOTAL		28

MODEL: Default
 FILE NAME: p:\pub\harronm.dwt\illinois.gov\PWIDOT\Documents\DOT_Offices\District 8\Projects\0876938\CADD\DATA\CADD\Process\0876938.rvt-ctrltbl.dwg

USER NAME = smithma	DESIGNED -	REVISED -
	DRAWN -	REVISED -
PLOT SCALE = 100,0000' / in.	CHECKED -	REVISED -
PLOT DATE = 6/15/2021	DATE -	REVISED -

STATE OF ILLINOIS
DEPARTMENT OF TRANSPORTATION

SCHEDULE OF QUANTITIES			
SCALE:	SHEET	OF	SHEETS
	1	2	

F.A.S. RTE.	SECTION	COUNTY	TOTAL SHEETS	SHEET NO.
1780	24R5-5	CLINTON	10	5
CONTRACT NO. 76P38				
ILLINOIS FED. AID PROJECT				

CLASS B PATCHING SCHEDULE

STATION			CLASS B PATCHES, 14 INCH			SAW CUTS FOOT	DOWEL BARS 1" EACH	TIE BARS 3/4" EACH	WELDED WIRE REINFORCEMENT SQ YD	
	LENGTH	WIDTH	TY-II	TY-III	TY-IV					
	FOOT	FOOT	SQ YD	SQ YD	SQ YD					
		JOINT W OF CARTER ST								
EB	22+41	12.00	12.50		16.7		50	20	16.7	
EB	22+53	15.00	12.50		20.8		53	20	20.8	
EB	34+78	15.00	12.50		20.8		53	20	20.8	
EB	42+29	15.00	12.50		20.8		53	20	20.8	
EB	56+62	21.00	12.50			29.2	59	20	7	
		JOINT E OF PIPELINE RD								
WB	125+46	9.00	12.50	12.5			47	20		
WB	117+89	20.00	12.50			27.8	58	20	27.8	
WB	114+67	15.00	12.50		20.8		53	20	20.8	
SUB-TOTAL				12.5	100.0	56.9	422	160	7	156.9
ANTICIPATED FAILURES 10%				1.3	10.0	5.7	42.2	16	1	15.7
ROUNDED TOTAL				14	110	63	464	176	8	173

MODEL: Default
 FILE NAME: p:\planningroom\dot\illinois\gov\pww\DOT\Documents\DOT_Offices\District 8\Projects\0876P38\CADD\data\CAD\Faces\0876P38-ph-ct-ct-ct-ct-ct.dwg

USER NAME = smichma	DESIGNED -	REVISED -
	DRAWN -	REVISED -
PLOT SCALE = 100,0000' / in.	CHECKED -	REVISED -
PLOT DATE = 6/11/2021	DATE -	REVISED -

**STATE OF ILLINOIS
DEPARTMENT OF TRANSPORTATION**

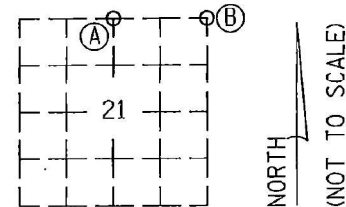
SCHEDULE OF QUANTITIES

SCALE: SHEET 2 OF 2 SHEETS STA. TO STA.

F.A.S. RTE.	SECTION	COUNTY	TOTAL SHEETS	SHEET NO.
1780	24R5-5	CLINTON	10	6
CONTRACT NO. 76P38				
ILLINOIS FED. AID PROJECT				

"MONUMENT RECORD"

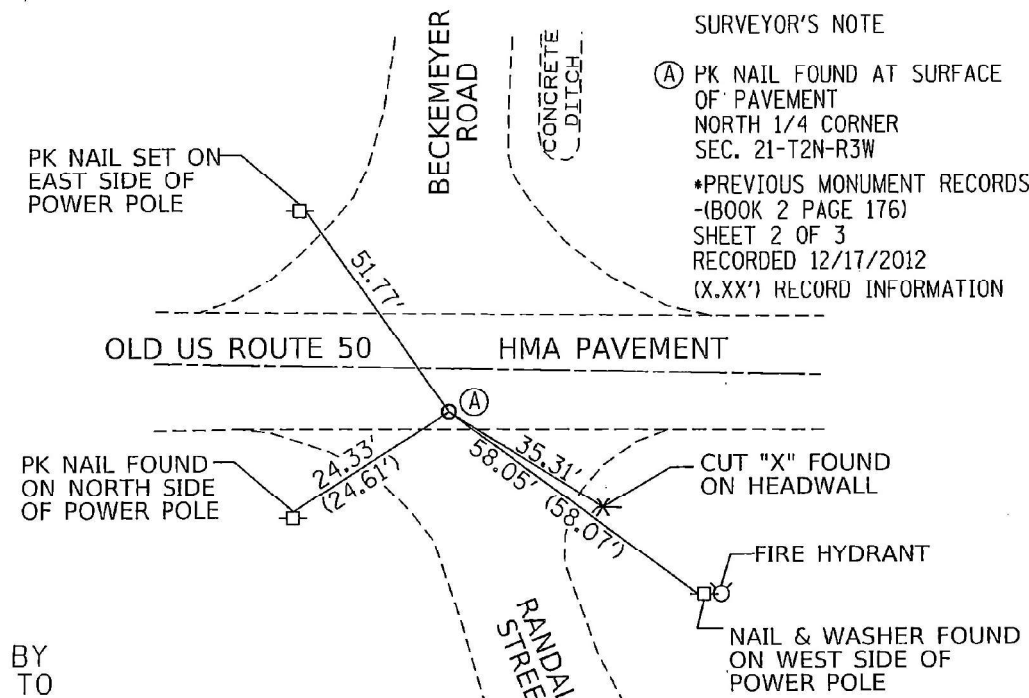
LAND SURVEY MONUMENT SITUATED IN
SECTION 21 TWP 2 NORTH
RANGE 3 WEST, 3rd P.M.
CLINTON COUNTY, IL.



SPACE RESERVED FOR RECORDING OFFICER

RECOVERY TIE DRAWING

(SHOW MONUMENT DESCRIPTION, ACCESSORIES & KNOWN HISTORY AT EACH RECORD CORNER WITH TIES)



SURVEYOR'S NOTE

(A) PK NAIL FOUND AT SURFACE OF PAVEMENT NORTH 1/4 CORNER SEC. 21-T2N-R3W
*PREVIOUS MONUMENT RECORDS - (BOOK 2 PAGE 176) SHEET 2 OF 3 RECORDED 12/17/2012 (X.XX') RECORD INFORMATION

PREPARED BY & RETURN TO



ENGINEERS - SURVEYORS
HENEGHAN AND ASSOCIATES, P.C.
1004 STATE HIGHWAY 16
JERSEYVILLE, ILLINOIS 62052
PHONE: (618) 498-6418
FAX #: (618) 498-6410
PROFESSIONAL DESIGN FIRM
REGISTRATION No. 184-002692
FILE No. 1279-110-00005
I.D.O.T. CONTRACT 76P38

ALL MEASUREMENTS SHOWN HEREON ARE HORIZONTAL DISTANCES
MONUMENT TIED FOR IDOT MONUMENT MAINTENANCE PROJECT IN PREPARATION OF CONSTRUCTION OR IMPROVEMENT PROJECT. A LAND SURVEY WAS NOT PERFORMED TO VERIFY THE LOCATION OF SAID MONUMENT.

I, JOSHUA E. STUMPE, 3737 PROFESSIONAL SURVEYOR, JERSEYVILLE, ILL. HEREBY CERTIFY THAT THIS DOCUMENT WAS PREPARED UNDER MY DIRECTION IN ACCORDANCE WITH THE LAND SURVEY MONUMENT ACT, CHAPTER 765 ILCS, 220.
Joshua E. Stumpe 5/14/21
IL PLS NO. 3737 DATE
EXPIRES 11/30/22

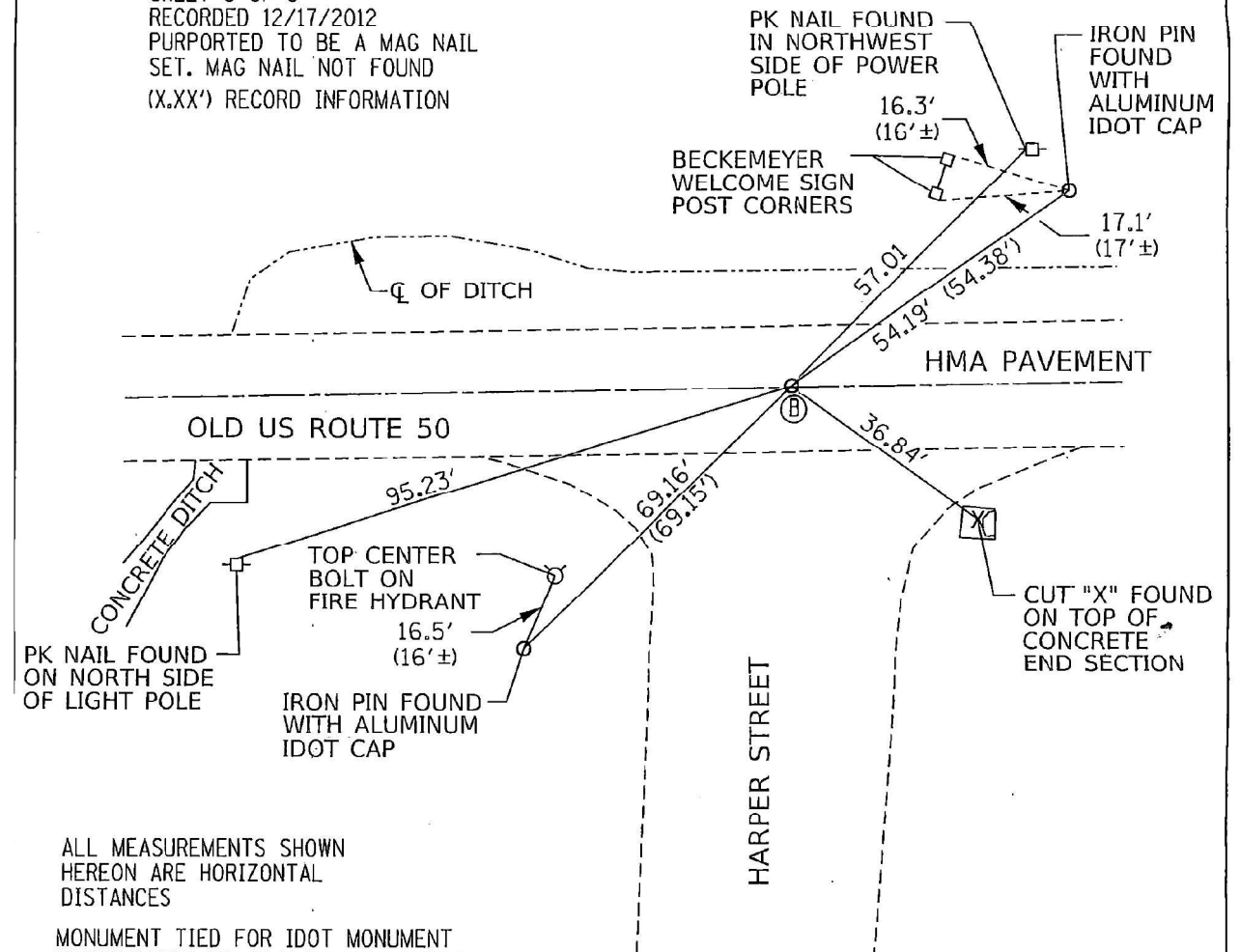
SURVEY MARKER 1

"MONUMENT RECORD"

SECTION 21 TWP 2 NORTH
RANGE 3 WEST, 3rd P.M.
CLINTON COUNTY, IL.

SURVEYOR'S NOTE

(B) 1/2" IRON PIN FOUND 1" DEEP IN PAVEMENT NORTHEAST CORNER SEC. 21-T2N-R3W
*PREVIOUS MONUMENT RECORD - (BOOK 2 PAGE 176) SHEET 3 OF 3 RECORDED 12/17/2012 PURPORTED TO BE A MAG NAIL SET. MAG NAIL NOT FOUND (X.XX') RECORD INFORMATION



ALL MEASUREMENTS SHOWN HEREON ARE HORIZONTAL DISTANCES

MONUMENT TIED FOR IDOT MONUMENT MAINTENANCE PROJECT IN PREPARATION OF CONSTRUCTION OR IMPROVEMENT PROJECT. A LAND SURVEY WAS NOT PERFORMED TO VERIFY THE LOCATION OF SAID MONUMENT.

SURVEY MARKER 2

STATE OF ILLINOIS
DEPARTMENT OF TRANSPORTATION

SURVEY MONUMENTS

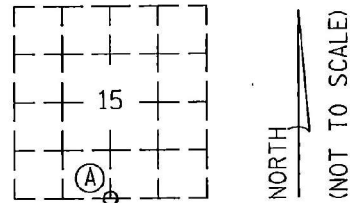
SCALE: NTS SHEET 1 OF 2 SHEETS STA. TO STA.

F.A.S. RTE.	SECTION	COUNTY	TOTAL SHEETS	SHEET NO.
1780	24R5-5	CLINTON	10	7
CONTRACT NO. 76P38				
ILLINOIS FED. AID PROJECT				

"MONUMENT RECORD"

LAND SURVEY MONUMENT SITUATED IN SECTION 15 TWP 2 NORTH RANGE 3 WEST, 3rd P.M. CLINTON COUNTY, IL.

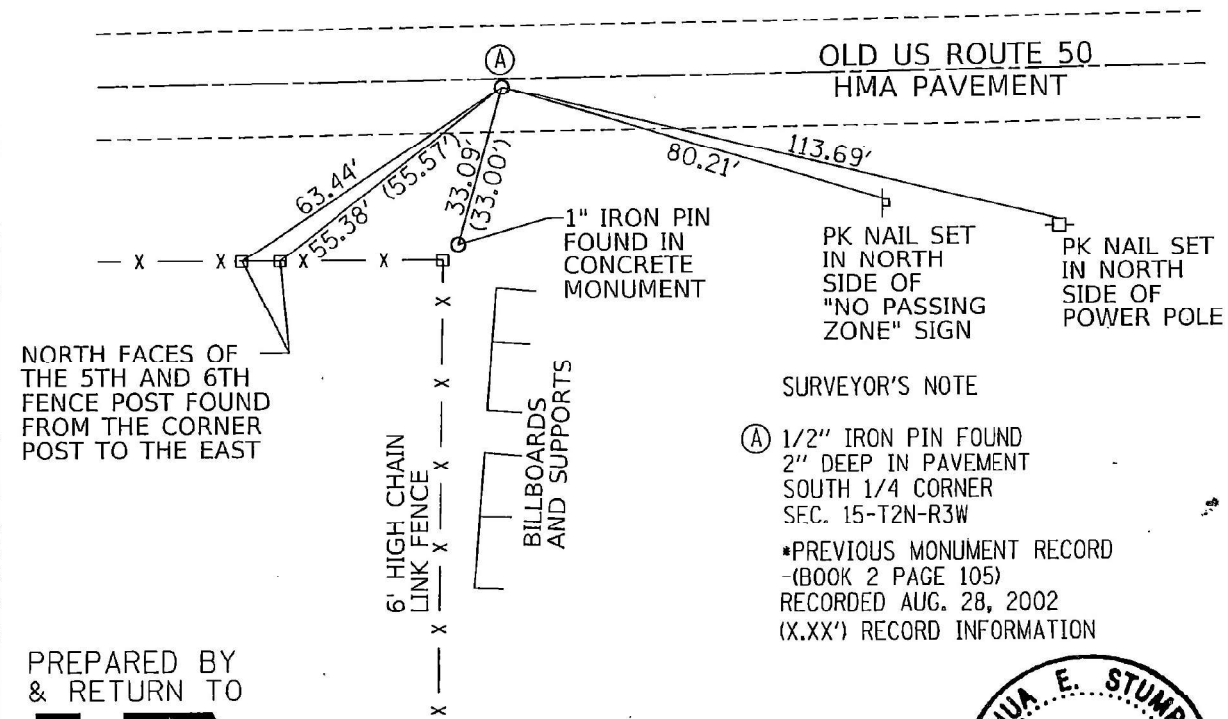
RECORDED ON 05/25/2021 01:46 PM
 REC FEE: 51.00
 RHSP FEE: 9.00
 NON-STANDARD FEE:
 PAGES: 1



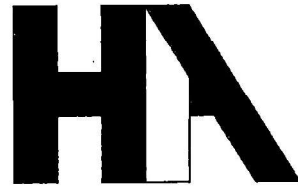
SPACE RESERVED FOR RECORDING OFFICER

RECOVERY TIE DRAWING

(SHOW MONUMENT DESCRIPTION, ACCESSORIES & KNOWN HISTORY AT EACH RECORD CORNER WITH TIES)



PREPARED BY & RETURN TO



ENGINEERS - SURVEYORS
 HENEGHAN AND ASSOCIATES, P.C.
 1004 STATE HIGHWAY 16
 JERSEYVILLE, ILLINOIS 62052
 PHONE: (618) 498-6418
 FAX #: (618) 498-6410
 PROFESSIONAL DESIGN FIRM
 REGISTRATION No. 184-002692
 FILE No. 1279-110-00005
 I.D.O.T. CONTRACT 76P38

ALL MEASUREMENTS SHOWN HEREON ARE HORIZONTAL DISTANCES

MONUMENT TIED FOR IDOT MONUMENT MAINTENANCE PROJECT IN PREPARATION OF CONSTRUCTION OR IMPROVEMENT PROJECT. A LAND SURVEY WAS NOT PERFORMED TO VERIFY THE LOCATION OF SAID MONUMENT.

SURVEYOR'S NOTE
 (A) 1/2" IRON PIN FOUND 2" DEEP IN PAVEMENT SOUTH 1/4 CORNER SEC. 15-T2N-R3W
 *PREVIOUS MONUMENT RECORD - (BOOK 2 PAGE 105) RECORDED AUG. 28, 2002 (X.XX') RECORD INFORMATION



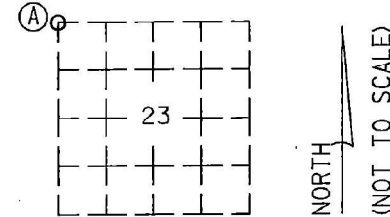
I, JOSHUA E. STUMPE, HEREBY CERTIFY THAT THIS DOCUMENT WAS PREPARED UNDER MY DIRECTION IN ACCORDANCE WITH THE LAND SURVEY MONUMENT ACT CHAPTER 765 ILCS 220.
 IL PLS NO. 3737 DATE 5/14/21
 EXPIRES 11/30/22

SURVEY MARKER 3

"MONUMENT RECORD"

LAND SURVEY MONUMENT SITUATED IN SECTION 23 TWP 2 NORTH RANGE 3 WEST, 3rd P.M. CLINTON COUNTY, IL.

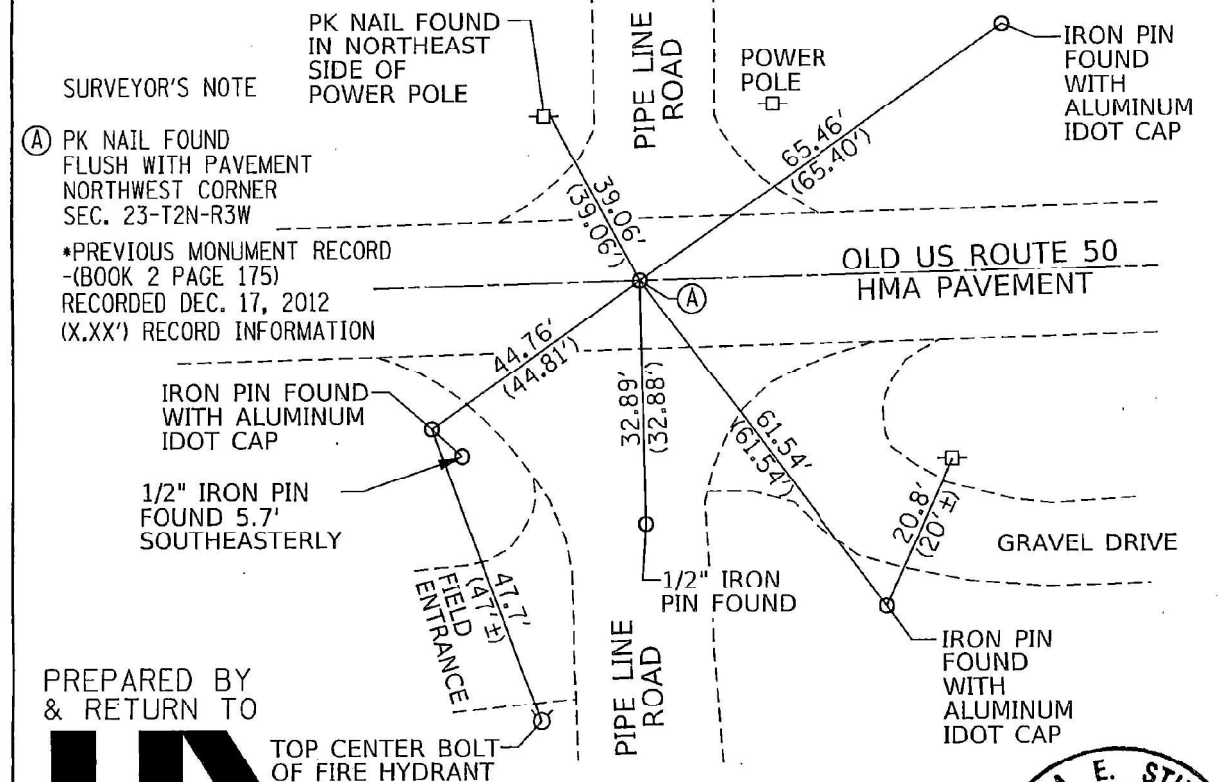
RECORDED ON 05/25/2021 01:46 PM
 REC FEE: 51.00
 RHSP FEE: 9.00
 NON-STANDARD FEE:
 PAGES: 1



SPACE RESERVED FOR RECORDING OFFICER

RECOVERY TIE DRAWING

(SHOW MONUMENT DESCRIPTION, ACCESSORIES & KNOWN HISTORY AT EACH RECORD CORNER WITH TIES)



PREPARED BY & RETURN TO

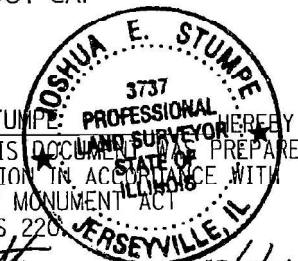


ENGINEERS - SURVEYORS
 HENEGHAN AND ASSOCIATES, P.C.
 1004 STATE HIGHWAY 16
 JERSEYVILLE, ILLINOIS 62052
 PHONE: (618) 498-6418
 FAX #: (618) 498-6410
 PROFESSIONAL DESIGN FIRM
 REGISTRATION No. 184-002692
 FILE No. 1279-110-00005
 I.D.O.T. CONTRACT 76P38

ALL MEASUREMENTS SHOWN HEREON ARE HORIZONTAL DISTANCES

MONUMENT TIED FOR IDOT MONUMENT MAINTENANCE PROJECT IN PREPARATION OF CONSTRUCTION OR IMPROVEMENT PROJECT. A LAND SURVEY WAS NOT PERFORMED TO VERIFY THE LOCATION OF SAID MONUMENT.

I, JOSHUA E. STUMPE, HEREBY CERTIFY THAT THIS DOCUMENT WAS PREPARED UNDER MY DIRECTION IN ACCORDANCE WITH THE LAND SURVEY MONUMENT ACT CHAPTER 765 ILCS 220.
 IL PLS NO. 3737 DATE 5/14/21
 EXPIRES 11/30/22



SURVEY MARKER 4

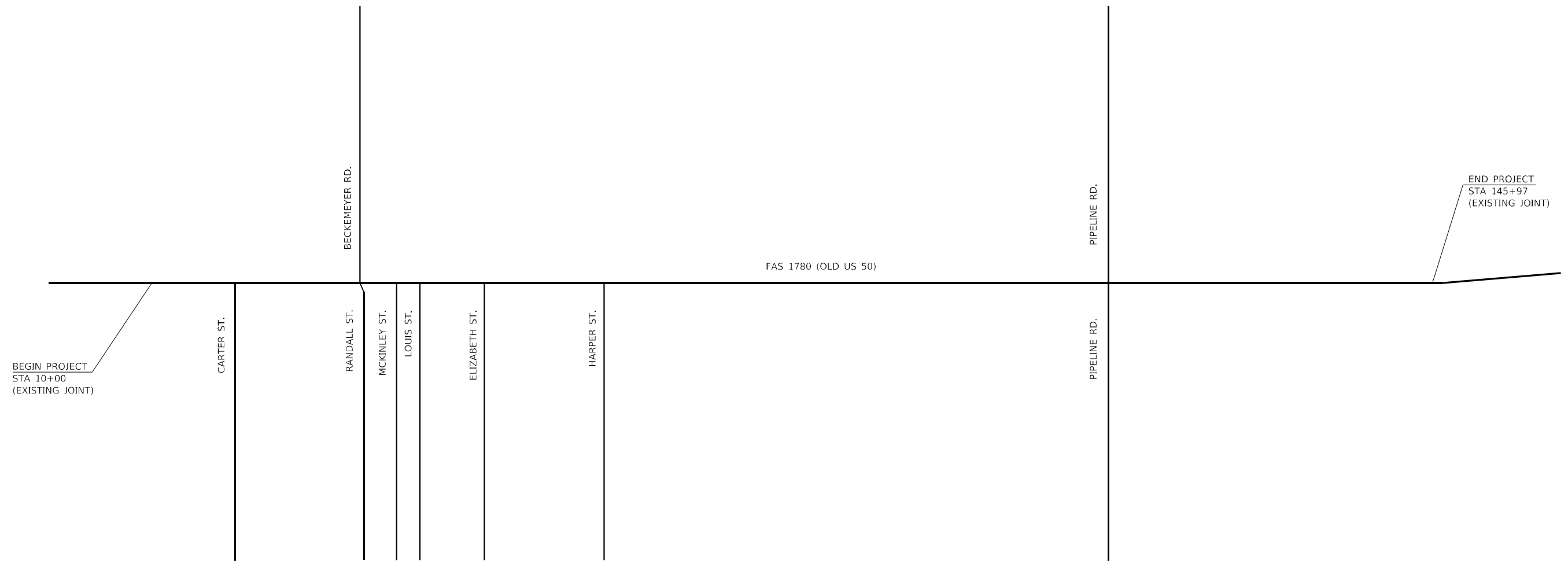
STATE OF ILLINOIS
 DEPARTMENT OF TRANSPORTATION

SURVEY MONUMENTS

SCALE: NTS SHEET 2 OF 2 SHEETS STA. TO STA.

F.A.S. RTE.	SECTION	COUNTY	TOTAL SHEETS	SHEET NO.
1780	24R5-5	CLINTON	10	8
CONTRACT NO. 76P38				

ILLINOIS FED. AID PROJECT



BEGIN PROJECT
STA 10+00
(EXISTING JOINT)

CARTER ST.

BECKEMEYER RD.

RANDALL ST.

MCKINLEY ST.

LOUIS ST.

ELIZABETH ST.

HARPER ST.

FAS 1780 (OLD US 50)

PIPELINE RD.

PIPELINE RD.

END PROJECT
STA 145+97
(EXISTING JOINT)

CITY OF BECKEMEYER

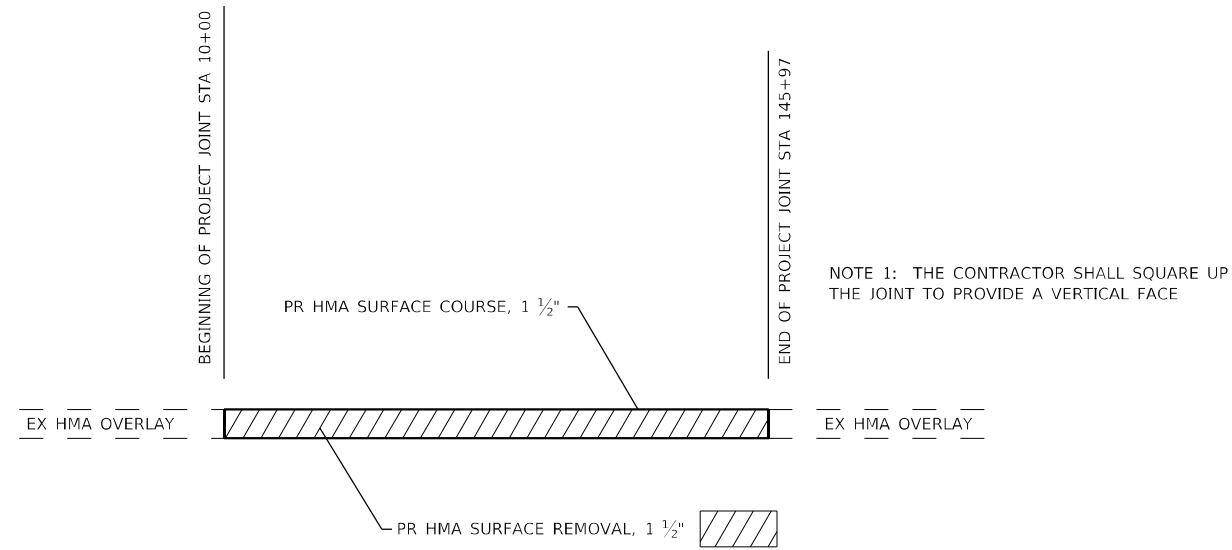
MODEL: Default
 FILE NAME: p:\pub\mroom.dwt\illinois.gov\PWIDOT\Documents\DOT_Offices\District 8\Projects\076P38\CADD\DATA\CAD\Process\076P38-01-Cover.dgn

USER NAME = smichma	DESIGNED -	REVISED -
	DRAWN -	REVISED -
PLOT SCALE = 100,0000' / in.	CHECKED -	REVISED -
PLOT DATE = 6/11/2021	DATE -	REVISED -

STATE OF ILLINOIS
DEPARTMENT OF TRANSPORTATION

LOCATION MAP			
SCALE: NTS	SHEET 1	OF 1 SHEETS	STA. TO STA.

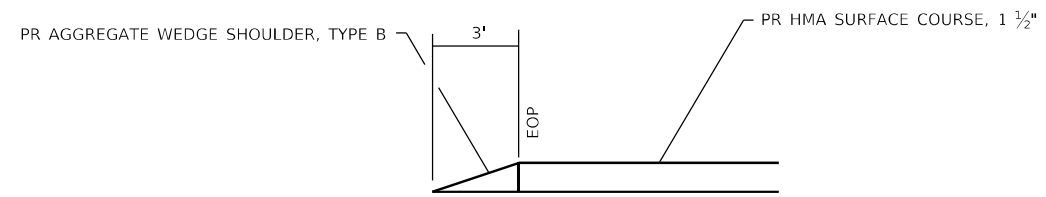
F.A.S. RTE.	SECTION	COUNTY	TOTAL SHEETS	SHEET NO.
1780	24R5-5	CLINTON	10	9
CONTRACT NO. 76P38				
ILLINOIS FED. AID PROJECT				



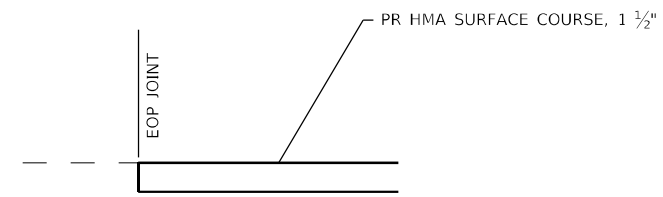
NOTE 1: THE CONTRACTOR SHALL SQUARE UP THE JOINT TO PROVIDE A VERTICAL FACE

BEGIN AND END OF PROJECT JOINT

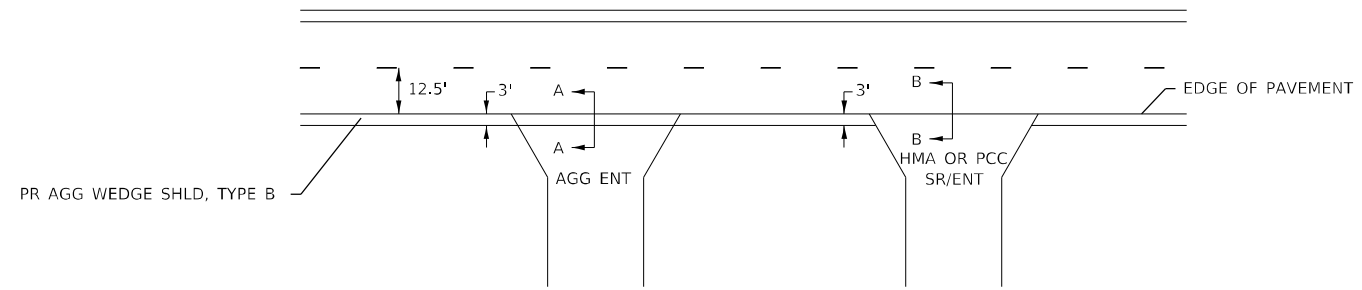
NOT TO SCALE



SECTION A-A



SECTION B-B



SIDEROAD / ENTRANCE DETAIL

NOT TO SCALE

MODEL: Default
 FILE NAME: p:\pub\mroom.dwt\illinois.gov\PWIDOT\Documents\IDOT_Offices\District 8\Projects\076P38\CADD\data\CAD\Process\076P38-ent-detail.dgn

USER NAME = smichma	DESIGNED -	REVISED -
	DRAWN -	REVISED -
PLOT SCALE = 100,0000' / in.	CHECKED -	REVISED -
PLOT DATE = 6/11/2021	DATE -	REVISED -

**STATE OF ILLINOIS
DEPARTMENT OF TRANSPORTATION**

MISCELLANEOUS DETAILS

SCALE: NTS SHEET 1 OF 1 SHEETS STA. TO STA.

F.A.S. RTE.	SECTION	COUNTY	TOTAL SHEETS	SHEET NO.
1780	24R5-5	CLINTON	10	10
CONTRACT NO. 76P38				
ILLINOIS FED. AID PROJECT				