

STATE OF ILLINOIS
DEPARTMENT OF TRANSPORTATION

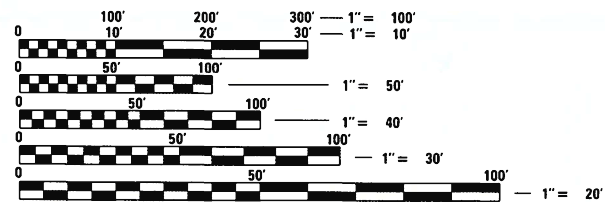
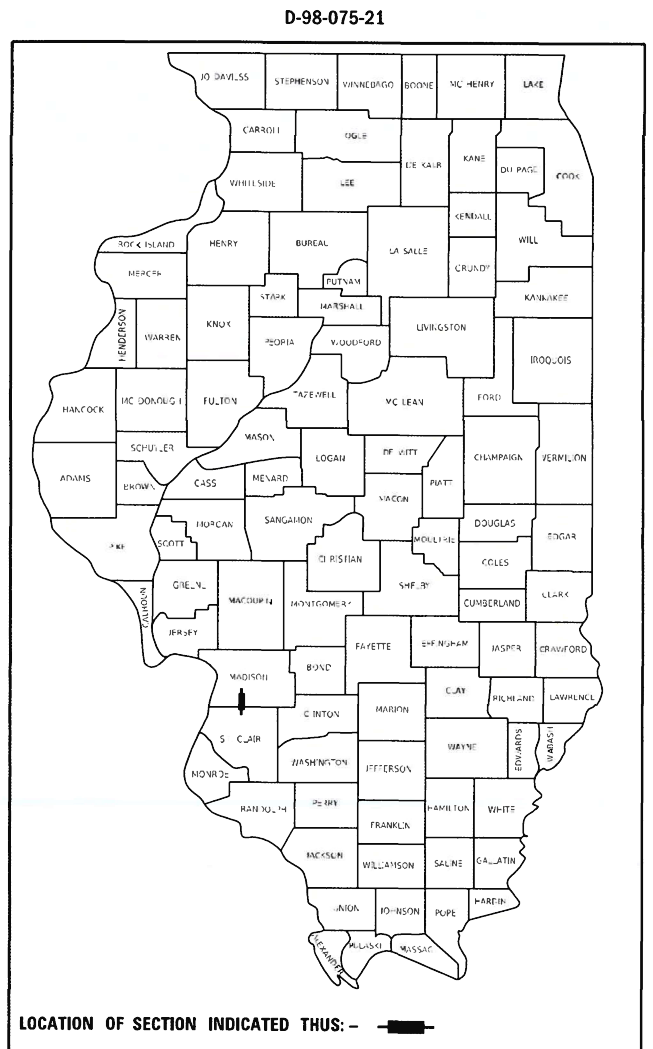
F.A.I. RTE.	SECTION	COUNTY	TOTAL SHEETS	SHEET NO.
255	60-7HB-BP-1	MADISON	10	1
ILLINOIS CONTRACT NO. 76P68			* 10 + 4 = 14 TOTAL SHEETS	

FOR INDEX OF SHEETS, SEE SHEET NO. 2

PROPOSED
HIGHWAY PLANS

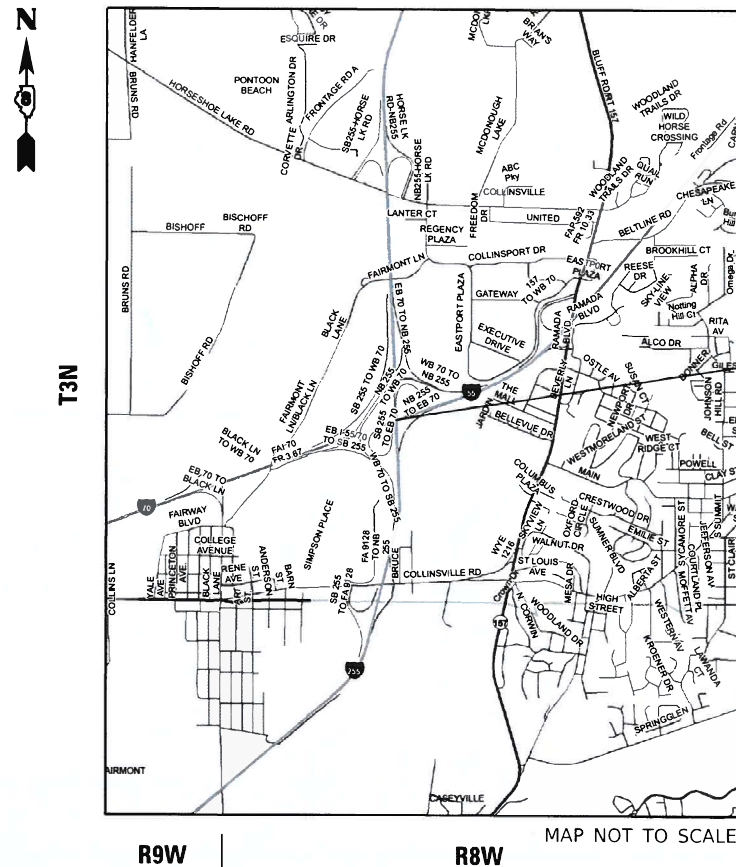
FAI ROUTE 255 (I-255)
SECTION 60-7HB-BP-1
PROJECT NHPP-24JQ(644)
BRIDGE PAINTING
MADISON COUNTY

C-98-106-21



FULL SIZE PLANS HAVE BEEN PREPARED USING STANDARD ENGINEERING SCALES. REDUCED SIZED PLANS WILL NOT CONFORM TO STANDARD SCALES. IN MAKING MEASUREMENTS ON REDUCED PLANS, THE ABOVE SCALES MAY BE USED.

J.U.L.I.E.
JOINT UTILITY LOCATION INFORMATION FOR EXCAVATORS
1-800-892-0123
OR 811



PROJECT LOCATION
SN 060-0206 NB
SN 060-0207 SB
LAT: 38.62726
LONG: -90.02947

PROJECT ENGINEER: CHERYL KEPLAR (618) 346-3123
PROJECT MANAGER: KAREN CHALLANDES (618) 346-3329

CONTRACT NO. 76P68

NET/GROSS LENGTH = 275 FT. = 0.0521 MILE

STATE OF ILLINOIS
DEPARTMENT OF TRANSPORTATION

SUBMITTED June 24, 2021
Keith Roberts
REGIONAL ENGINEER

August 13, 2021
Scott A. Etk
ENGINEER OF DESIGN AND ENVIRONMENT

August 13, 2021
James J. Quinn
DIRECTOR OF HIGHWAYS PROJECT IMPLEMENTATION

PRINTED BY THE AUTHORITY
OF THE STATE OF ILLINOIS

INDEX OF SHEETS

1	COVER SHEET
2	INDEX OF SHEETS, HIGHWAY STANDARDS, GENERAL NOTES, COMMITMENTS, AND ADT
3-4	SUMMARY OF QUANTITIES
5-10	STAGING SHEETS
11	GENERAL PLANS & ELEVATIONS
12	DECK DETAILS
13	FLAMING PLAN
14	FLAMING DETAILS

HIGHWAY STANDARDS

000001-08
0001006
701101-05
701400-10
701402-12
701426-09
701428-01
701451-05
701446-11
701901-08
704001-08
780001-05

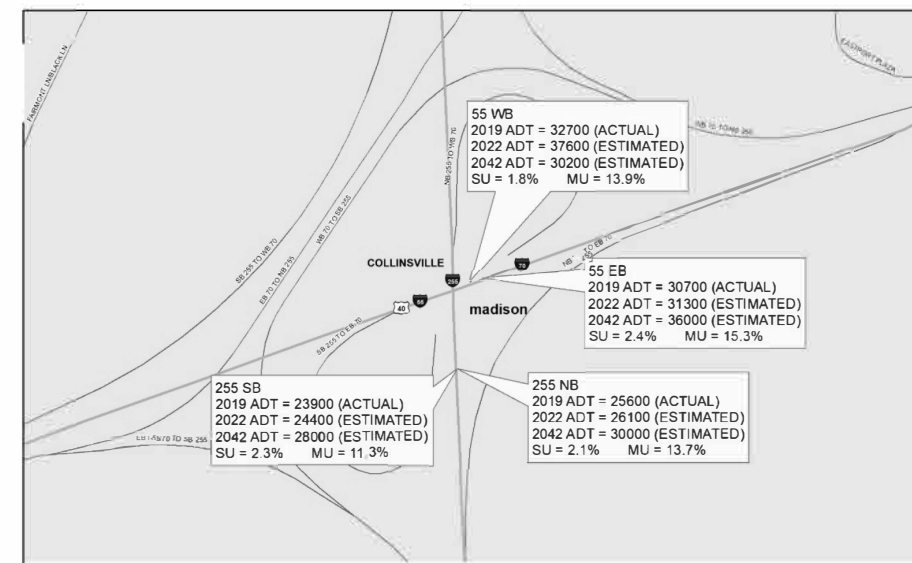
GENERAL NOTES

- UTILITIES KNOWN TO HAVE FACILITIES IN THE AREA:
AT&T ILLINOIS COMMUNICATIONS
CHARTER COMMUNICATIONS, INC. CABLE TV
DEPARTMENT OF CENTRAL MANAGEMENT SERVICES COMMUNICATIONS
CITY OF COLLINSVILLE WATER AND SANITARY SEWER
- THE DEPARTMENT STRONGLY ENCOURAGES THE PRIME CONTRACTOR AND THEIR APPROVED SUB-CONTRACTORS TO HIRE MINORITY, WOMEN AND DISADVANTAGED INDIVIDUALS FROM ITS FEDERALLY FUNDED HIGHWAY CONSTRUCTION CAREERS TRAINING PROGRAM (HCCTP) TO HELP MEET WORKFORCE AND TRAINEE GOALS. THIS PROGRAM IS TRAINING MINORITIES, WOMEN AND DISADVANTAGED INDIVIDUALS IN HIGHWAY CONSTRUCTION-RELATED SKILLS, E.G., MATH FOR THE TRADES, JOB READINESS, TECHNICAL SKILLS COURSEWORK (CARPENTRY, CONCRETE FLATWORK, BLUEPRINT READING, SITE PLANS, SITE WORK, TOOLS USE, ETC.) AND OSHA 10 HOUR CERTIFICATION, TO PREPARE THEM FOR A CAREER IN THE HIGHWAY CONSTRUCTION TRADES. GRADUATES ARE WELL-TRAINED AND READY TO BECOME PRODUCTIVE ENTRY-LEVEL CONSTRUCTION WORKERS. CONTACT THE DISTRICT 8 EEO OFFICE AT 618-346-3360 AND/OR THE HCCTP COORDINATOR AT 618-874-6528 TO LEARN MORE ABOUT THE PROGRAM AND FOR ASSISTANCE IN MEETING WORKFORCE AND TRAINEE GOALS.
- SN 060-0207 HAS A 'RIGHT LANE EXIT ONLY' DECAL ON THE WEST BEAM SURFACE. THIS DECAL SHALL BE REMOVED DURING THE SURFACE PREPARATION. THIS WORK SHALL BE INCLUDED IN THE COST OF CLEANING AND PAINTING STEEL BRIDGE. APPLICATION OF A NEW DECAL WILL BE COMPLETED BY IDOT PERSONNEL.
- THE SSPC-QP1 AND SSPC-QP2 CERTIFICATIONS WILL BE REQUIRED FOR ALL BRIDGES.
- FOR LOCATIONS 1 AND 2 CLEANING AND PAINTING OF THE EXISTING STRUCTURAL STEEL SHALL BE AS SPECIFIED IN THE SPECIAL PROVISION FOR "CLEANING AND PAINTING EXISTING STEEL STRUCTURES". ALL EXISTING STEEL SHALL BE PAINTED ACCORDING TO THE REQUIREMENTS OF PAINT SYSTEM 1-OZ/E/U. THE COLOR OF THE FINAL FINISH COAT FOR ALL INTERIOR STEEL SURFACES SHALL BE GRAY, MUNSELL NO 5B 7/1. THE COLOR OF THE FINAL FINISH COAT FOR THE EXTERIOR AND BOTTOM FLANGES OF THE FASCIA BEAMS SHALL BE REDDISH BROWN, MUNSELL NO 2.5 YR 3/4.
- FOUR (4) CHANGEABLE MESSAGE BOARD SHALL BE REQUIRED FOR THIS PROJECT. THEY SHALL BE PLACED TWO WEEKS PRIOR TO ANY LANE CLOSURE AND SHALL REMAIN UP FOR THE DURATION OF THE PROJECT. THE CHANGEABLE MESSAGE BOARDS SHALL BE PLACED AS SPECIFIED IN THE PLANS OR AT THE DIRECTION OF THE ENGINEER.

COMMITMENTS

NONE

ADT



MODEL: MODELNAME\$
FILE NUMBER: 76P68

USER NAME = \$USER\$	DESIGNED -	REVISED -
	DRAWN -	REVISED -
PLOT SCALE = \$SCALE\$	CHECKED -	REVISED -
PLOT DATE = \$DATE\$	DATE -	REVISED -

STATE OF ILLINOIS
DEPARTMENT OF TRANSPORTATION

INDEX OF SHEETS, HIGHWAY STANDARDS
GENERAL NOTES, COMMITMENTS, AND ADT

SCALE: SHEET OF SHEETS STA. TO STA.

REVISED SHEET 8/31/2021

REV. - MS

F.A.I. RTE.	SECTION	COUNTY	TOTAL SHEETS	SHEET NO.
255	60-7HB-BP-1	MADISON	10	2
			CONTRACT NO. 76P68	
		ILLINOIS	FED. AID PROJECT	

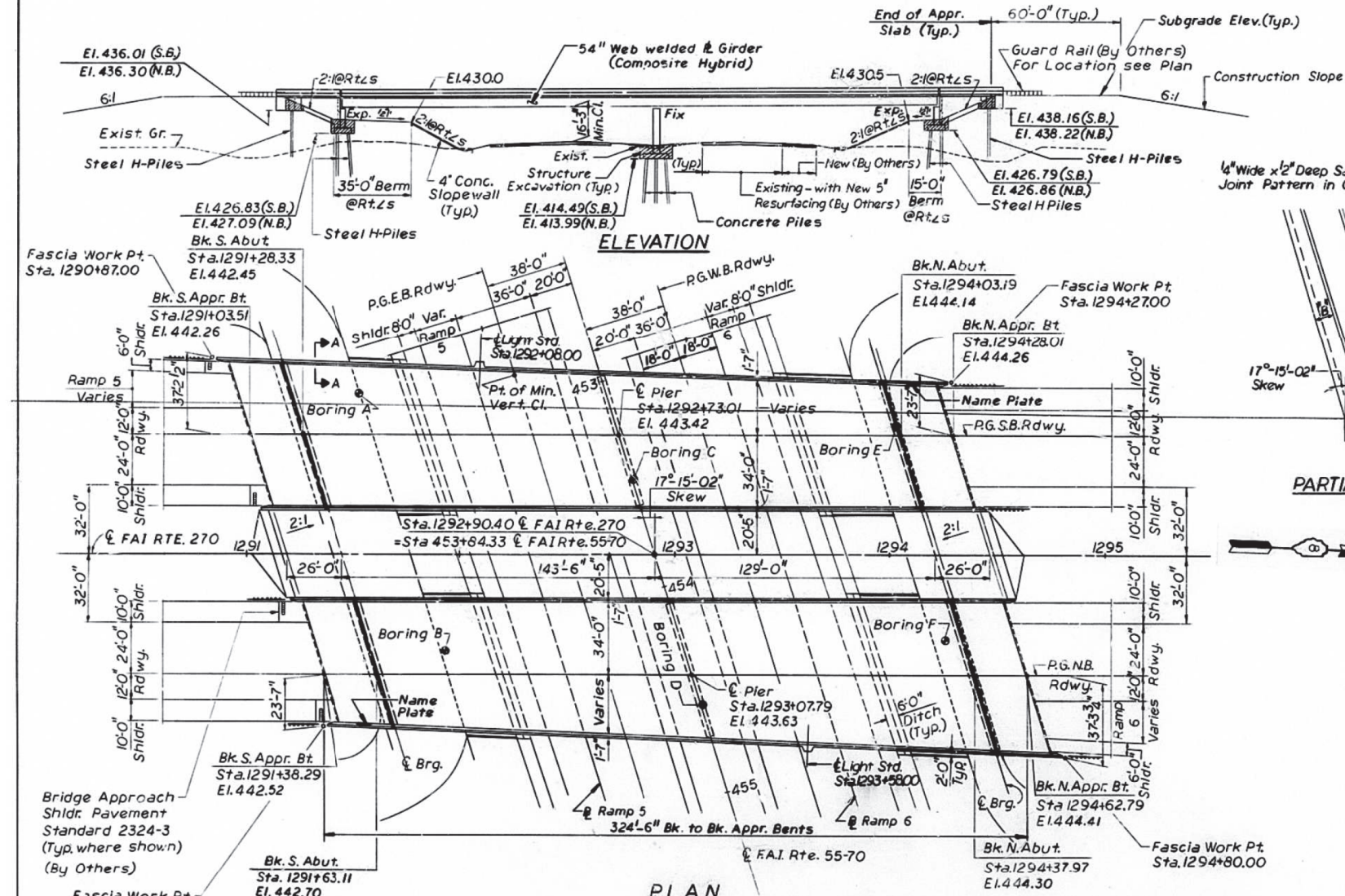
B.M.-17 Top iron pin State Traverse Point "X"-57
Sta. 1291 + 42.12 @ F.A.I. 270 El. 419.98
No Existing Structure

Sht 1
of 23

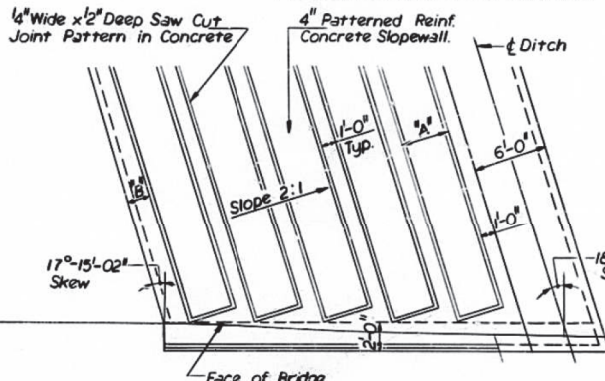
ROUTE NO.	SECTION	COUNTY	TOTAL SHEETS	SHEET NO.
FAI 270	60-7HB	MADISON	196	79
FED. ROAD DIST. NO. 7 ILLINOIS PROJ.				

GENERAL NOTES

- SEE PROPOSAL FOR BORING DATA.
- FASTENERS SHALL BE HIGH STRENGTH BOLTS. BOLTS 7/8" Ø. OPEN HOLES 15/16" Ø, UNLESS OTHERWISE NOTED.
647,220 LBS. (M183)
175,500 LBS. (M222)
472,680 LBS. (M223 G50)
- CAST STEEL SHALL BE AASHTO M192 CLASS 70. STRUCTURAL STEEL WELDMENTS OF EQUAL SECTIONS AND MEETING AASHTO M183 MAY BE SUBSTITUTED FOR CASTINGS AT THE OPTION OF THE CONTRACTOR, SUBJECT TO APPROVAL BY THE ENGINEER PRIOR TO FABRICATION. NO ADDITIONAL COMPENSATION WILL BE ALLOWED THE CONTRACTOR FOR THIS SUBSTITUTION.
- For painting Structural Steel see Special Provisions.
- FIELD WELDING OF CONSTRUCTION ACCESSORIES WILL NOT BE PERMITTED TO THE BOTTOM FLANGE OF GIRDERS NOR TO THE TOP FLANGE FOR A DISTANCE EQUAL TO ONE-FOURTH THE SPAN LENGTH EACH WAY FROM THE PIER SUPPORTS. FIELD WELDING IN OTHER AREAS WILL BE PERMITTED ONLY WHEN APPROVED BY THE ENGINEER.
- ANCHOR BOLTS SHALL BE SET BEFORE BOLTING CROSS FRAMES OVER SUPPORTS.
- SLOPE WALL SHALL BE REINFORCED WITH WELDED WIRE FABRIC, 6" X 6" - 14.0 X 14.0, WEIGHING 50 LBS PER 100 SQ FT.
- THE CONTRACTOR SHALL DRIVE TWO STEEL H TEST PILES, ONE EACH AT SOUTH ABUTMENT S.B. RDWY. AND AT NORTH ABUTMENT S.B. RDWY. AND ONE CONCRETE TEST PILE AT PIER N.B. RDWY. TEST PILES SHALL BE DRIVEN IN A PERMANENT LOCATION AS DIRECTED BY THE ENGINEER BEFORE ORDERING THE REMAINDER OF PILES.
- THE EMBANKMENT CONFIGURATION SHOWN SHALL BE THE MINIMUM EMBANKMENT THAT MUST BE CONSTRUCTED PRIOR TO CONSTRUCTION OF THE ABUTMENTS.
- BEARING SEAT SURFACES SHALL BE CONSTRUCTED OR ADJUSTED TO THE DESIGNATED ELEVATIONS WITHIN A TOLERANCE OF 1/8". ADJUSTMENT SHALL BE MADE EITHER BY GRINDING THE SURFACE OR BY SHIMMING THE BEARING. TWO 1/8" ADJUSTING SHIMS, OF THE DIMENSIONS OF THE BOTTOM BEARING PLATE, SHALL BE PROVIDED FOR EACH BEARING IN ADDITION TO ALL OTHER PLATES OR SHIMS.
- THE MAIN LOAD CARRYING MEMBER COMPONENTS SUBJECT TO TENSILE STRESS SHALL CONFORM TO THE SUPPLEMENTAL REQUIREMENTS FOR NOTCH TOUGHNESS ZONE 2. THESE COMPONENTS ARE THE TENSION FLANGES, WEBS, AND ALL SPLICE PLATE MATERIAL OF THE STEEL GIRDERS.
- REINFORCEMENT BARS SHALL CONFORM TO THE REQUIREMENTS OF AASHTO M31 OR M53 GRADE 60.



SECTION THRU SLOPEWALL



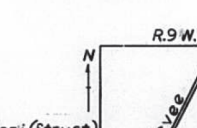
PARTIAL PLAN-4" PATTERNED REINF. CONC. SLOPEWALL

Location	"A"	"B"	
		Min.	Max.
S.B. Rdwy. S. Berm.	3'-3"	1'-7"	3'-1"
N.B. Rdwy. S. Berm.	3'-9"	1'-3"	2'-8"
S.B. Rdwy. N. Berm.	4'-0"	1'-10"	3'-1"
N.B. Rdwy. N. Berm.	3'-9"	1'-0"	2'-7"

BILL OF MATERIAL

ITEM	UNIT	SUB-STRUCT.	SUPER-STRUCT.	TOTAL
Structure Excavation	Cu. Yds.	1490	—	1490
Structural Steel	L.S.	—	0.51	0.51
Class "X" Concrete	Cu. Yds.	1,022.5	1,350.0	2,352.5
Reinforcement Bars	Lbs.	89,530	—	89,530
Reinforcement Bars (Epoxy Coated)	Lbs.	—	374,060	374,060
Protective Coat	Sq. Yds.	—	5,040	5,040
Neoprene Expansion Joints (2")	Lin. Ft.	—	272	272
Stud Shear Connectors	Ea.	—	9,726	9,726
Name Plates	Ea.	2	—	2
Slope Wall (4")	Sq. Yds.	1,170	—	1,170
Steel Piles HP 12x84	Lin. Ft.	16,508	—	16,508
Test Piles Steel HP 12x84	Ea.	2	—	2
Test Piles Concrete	Lin. Ft.	4316	—	4316
Concrete Piles	Ea.	1	—	1
Sand Backfill	Cu. Yds.	990	—	990
Conduit System	L.SUM	—	0.43	0.43

SECTION A-A



STATION 1292+90.40
BUILT 198... BY
STATE OF ILLINOIS
F.A.I. RT. 255 SEC. 60-7HB
F.A. PROJ. I-255-7(G)
LOADING HS20 & ALT.
STR. NO.

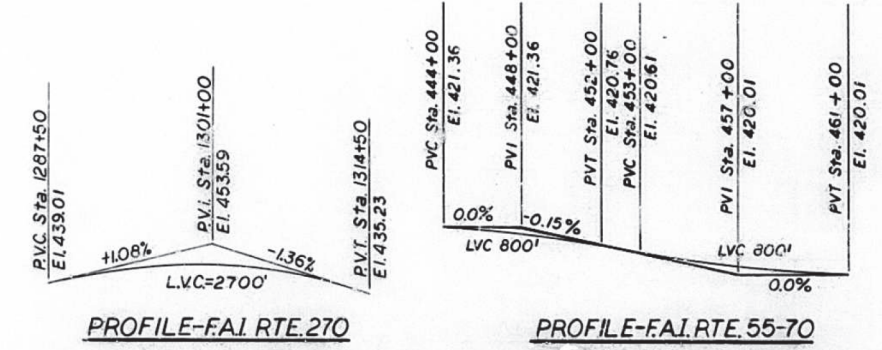
DESIGN STRESSES

Load Factor Design for Slab.
f_c = 3500 psi
f_y = 60,000 p.s.i. (Reinf.)
f_s = 20,000 (M183) & 27,000 (M222 & M223 G50) psi. (Struct.)
f_c = 1400 psi., f_s = 24,000 p.s.i. (Substructure)

Allow 25 p.s.f. for Fut. W.S.
Loading: HS20-44 or
Alternate Military Loading
Design Specifications:
A.A.S.H.T.O. 1977 (Service Load Design)
& 1978, 1979 & 1980 Plus Applicable Interims

NAME PLATE
STANDARD 2113
(STRUCTURE NUMBER
TO BE SUPPLIED BY
DISTRICT)

APPROVED
FOR STRUCTURAL ADEQUACY ONLY



TORNROSE, CAMPBELL & ASSOCIATES

FOR INFORMATION ONLY

ADDED ENTIRE SHEET 8/31/201

USER NAME	DESIGNED	REVISION
= challesdeske	-	-
DRAWN	-	-
CHECKED	-	-
DATE	-	-

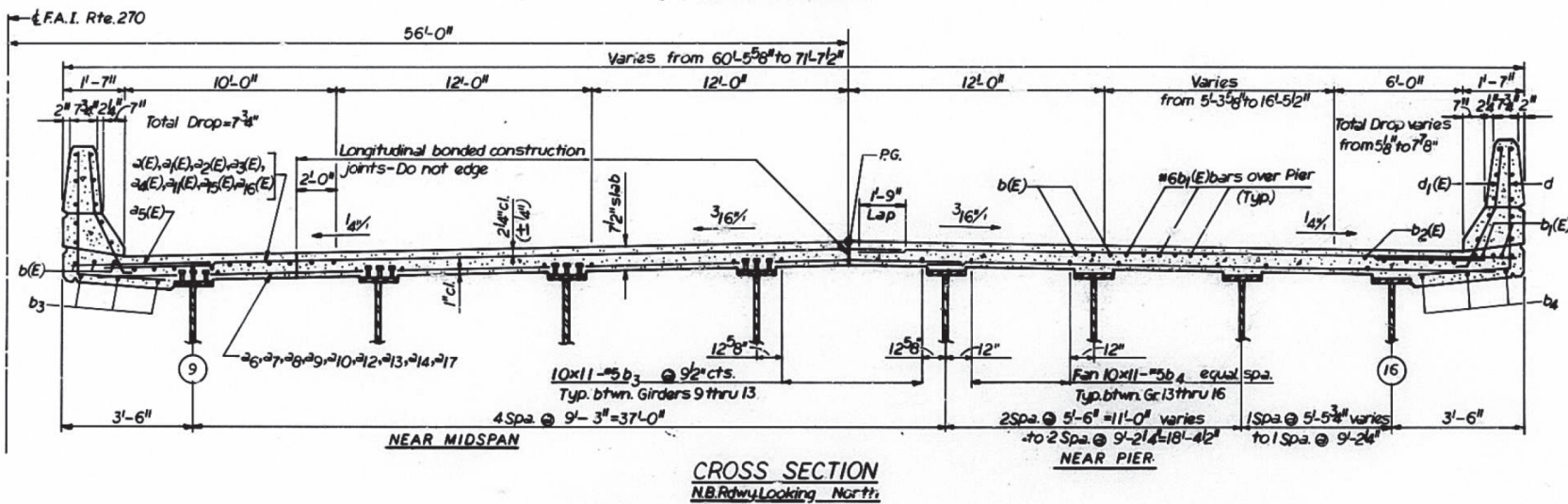
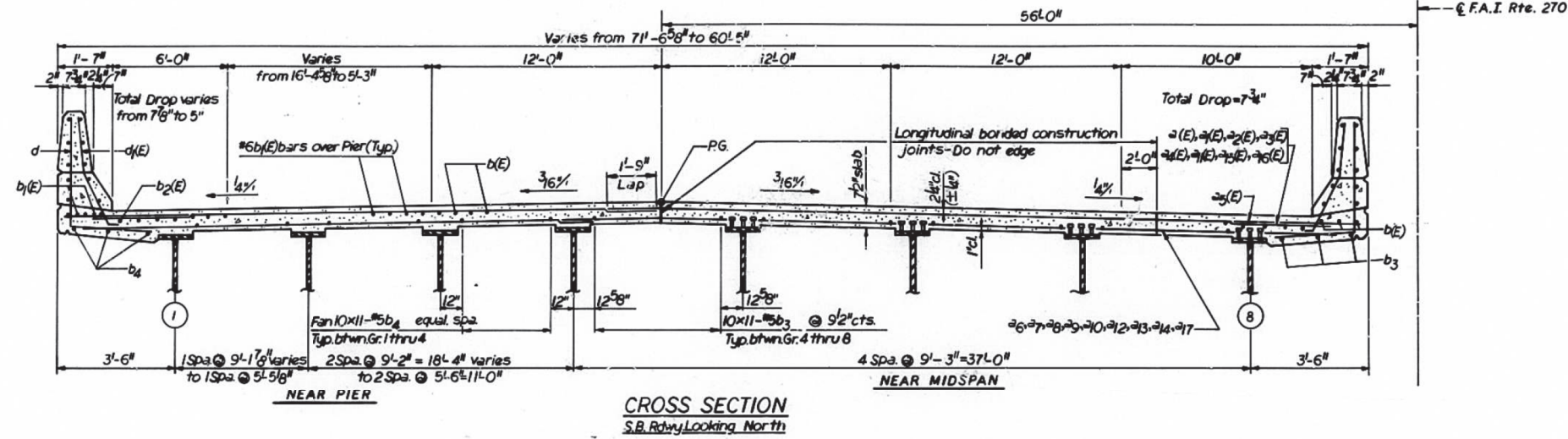
STATE OF ILLINOIS
DEPARTMENT OF TRANSPORTATION

SCALE:	SHEET	OF	SHEETS	STA.	TO	STA.

F.A.I. RTE.	SECTION	COUNTY	TOTAL SHEETS	SHEET NO.
255	60-7HB-BP-1	MADISON	14	11
CONTRACT NO. 76P68				
ILLINOIS FED. AID PROJ.				

Sht. 7
of 23

ROUTE NO.	SECTION	COUNTY	TOTAL SHEETS	SHEET NO.
F.A.1270	60-7HB	MADISON	196	85
FED. ROAD DIST. NO. 7 ILLINOIS PROJ.				



Note: All reinf. bars in deck and parapets shall be epoxy coated.

Work this sht. with shts. 6, 8 & 11

ILLINOIS DIVISION OF HIGHWAYS		
F.A.I. ROUTE 270		
PROJECT	SECTION 60-7HB	
MADISON COUNTY		
DECK DETAILS		
Designed By: LP	Drawn By: LK	Quantity By:
Checked By: AU	Checked By: RP-AU	Checked By:

FOR INFORMATION ONLY

ADDED ENTIRE SHEET 8/31/2021

USER NAME = challeske	DESIGNED -	REVISED -
	DRAWN -	REVISED -
PLOT SCALE = 100,0000' / in.	CHECKED -	REVISED -
PLOT DATE = 8/27/2021	DATE -	REVISED -

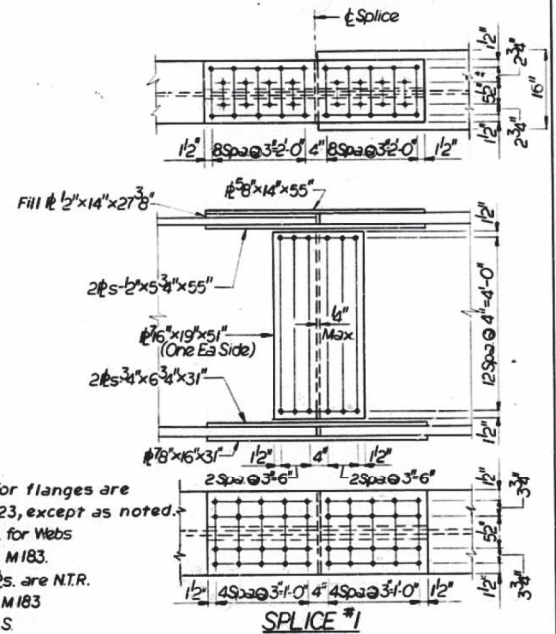
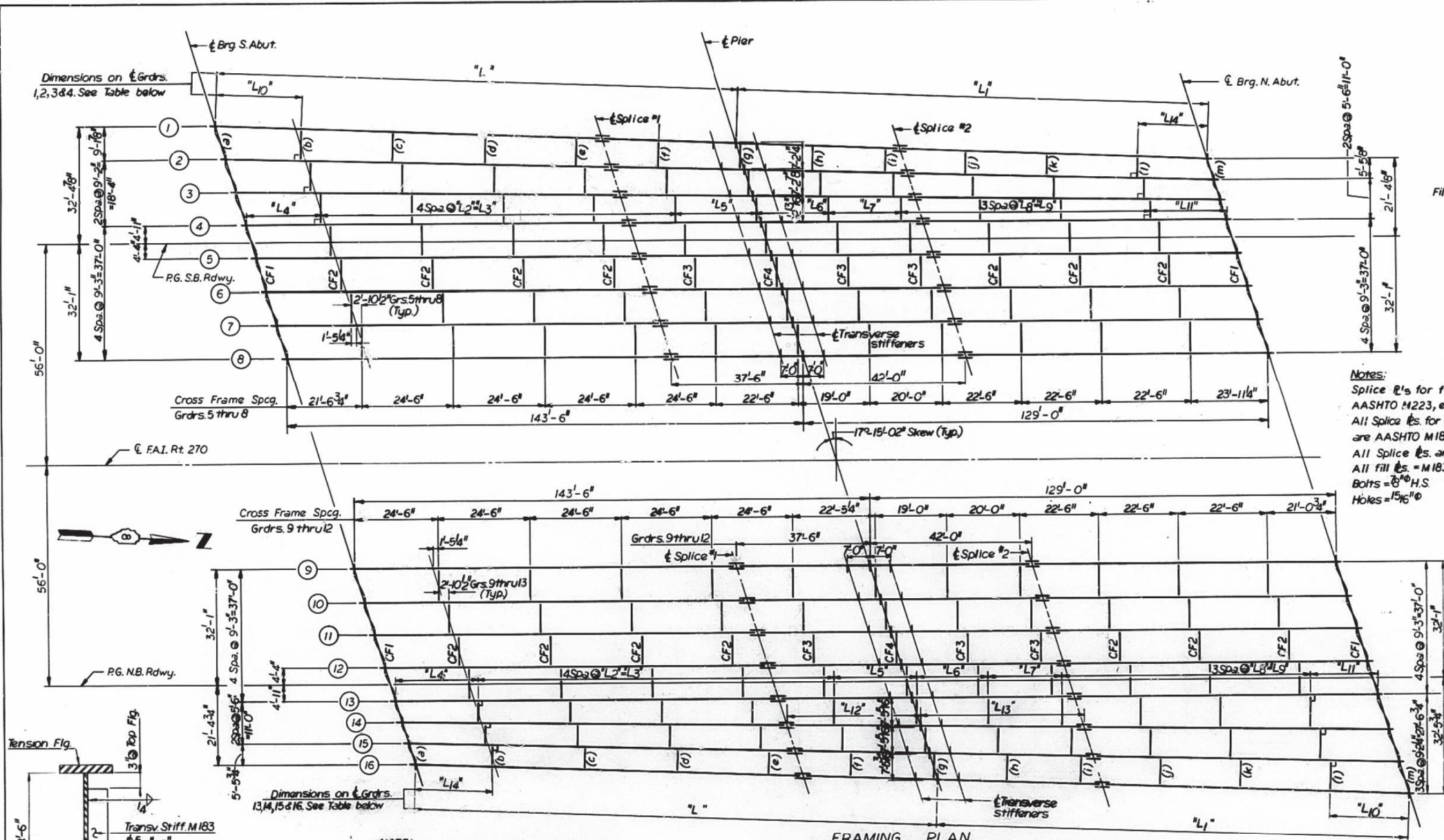
STATE OF ILLINOIS
DEPARTMENT OF TRANSPORTATION

EXISTING STRUCTURE PLANS

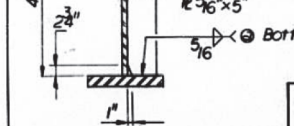
SCALE: SHEET OF SHEETS STA. TO STA.

F.A.I. RTE.	SECTION	COUNTY	TOTAL SHEETS	SHEET NO.
255	60-7HB-BP-1	MADISON	14	12
CONTRACT NO. 76P68				
ILLINOIS FED. AID PROJECT				

Sht. 12 of 23	ROUTE NO. F.A.I. 270	SECTION 60-7HB	COUNTY MADISON	TOTAL SHEETS 196	SHEET NO. 90
FED. ROAD DIST. NO. 7 L.L. 6205 PROJ.					



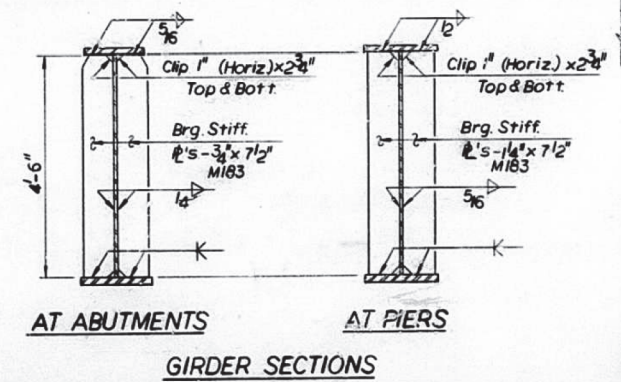
Notes:
Splice R's for flanges are AASHTO M223, except as noted.
All Splice R's for Webs are AASHTO M183.
All Splice R's are NTR.
All Fill R's = M183
Bolts = 5/8" H.S.
Holes = 15/16"



NOTE:
For Cross Frame lengths at locations (a) thru (m) see Table Sht. 13

Girder No.	"L"	"L ₁ "	"L ₂ "	"L ₃ "	"L ₄ "	"L ₅ "	"L ₆ "	"L ₇ "	"L ₈ "	"L ₉ "	"L ₁₀ "	"L ₁₁ "	"L ₁₂ "	"L ₁₃ "	"L ₁₄ "
1	45'-5 1/2"	30'-6 3/4"	-	-	-	-	-	-	-	-	21'-10 3/8"	-	38'-0"	42'-7"	24'-10 3/8"
2	44'-9"	30'-1 1/2"	24'-5 1/4"	39'-1"	21'-9 1/8"	22'-8 1/2"	30'-2"	22'-9 1/4"	59'-3 1/4"	-	23'-5 1/8"	37'-10"	42'-4"	-	-
3	44'-7 1/8"	29'-6 3/8"	24'-8"	38'-8"	21'-8 1/2"	22'-7 1/8"	30'-1"	22'-8"	59'-0"	-	23'-6 1/8"	37'-8"	42'-2"	-	-
4	43'-6"	29'-0"	24'-8 3/8"	38'-3"	21'-7 1/2"	22'-6"	30'-0"	22'-6 1/4"	57'-8 1/4"	-	23'-5 1/4"	37'-6"	42'-0"	-	-
13	43'-6"	29'-0"	24'-6 3/8"	38'-3"	23'-11 1/8"	22'-5 1/4"	30'-0"	22'-6"	57'-6"	-	24'-1 1/2"	37'-6"	42'-0"	-	-
14	44'-1 1/8"	29'-6 3/8"	24'-8"	38'-8"	24'-1 1/2"	22'-6 3/8"	30'-1"	22'-7 1/8"	57'-9 3/8"	-	24'-1 1/8"	37'-8"	42'-2"	-	-
15	44'-5 1/8"	30'-1 1/2"	24'-9 1/2"	39'-2"	24'-2 1/8"	22'-7 3/8"	30'-2"	22'-8 1/2"	58'-1 1/2"	-	24'-2 1/2"	37'-10"	42'-4"	-	-
16	45'-5 1/2"	30'-6 3/4"	-	-	-	-	-	-	-	-	24'-3 1/2"	-	38'-0"	42'-7"	24'-10 3/8"

TABLE OF "L" DIMENSIONS (Dimensions are given along & girder)



NTR denotes plates to which notch roughness requirements are applicable
Work this sht. with sht. 13 & 14

ILLINOIS DIVISION OF HIGHWAYS

F.A.I. ROUTE 270
PROJECT SECTION 60-7HB
MADISON COUNTY
FRAMING PLAN

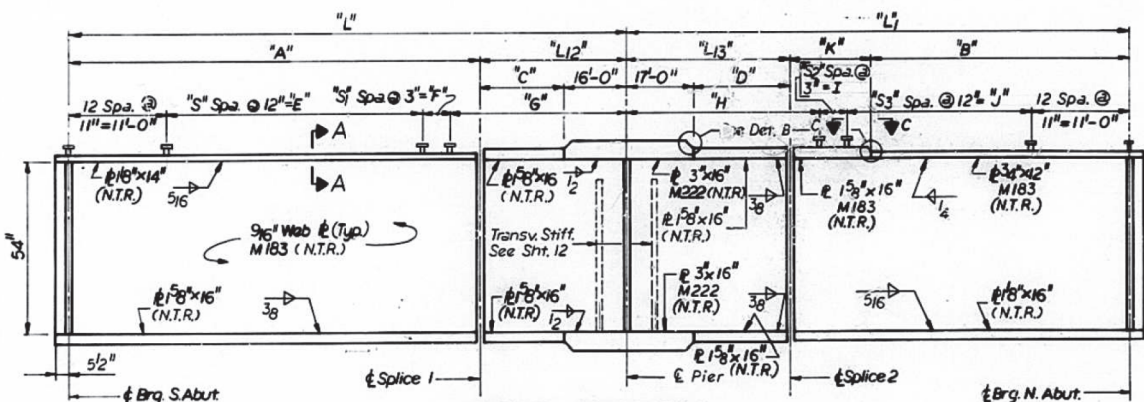
Designed By: LP Drawn By: LK Quantity By:
Checked By: AU Checked By: LP Checked By:

TORNROSE, CAMPBELL & ASSOCIATES

FOR INFORMATION ONLY

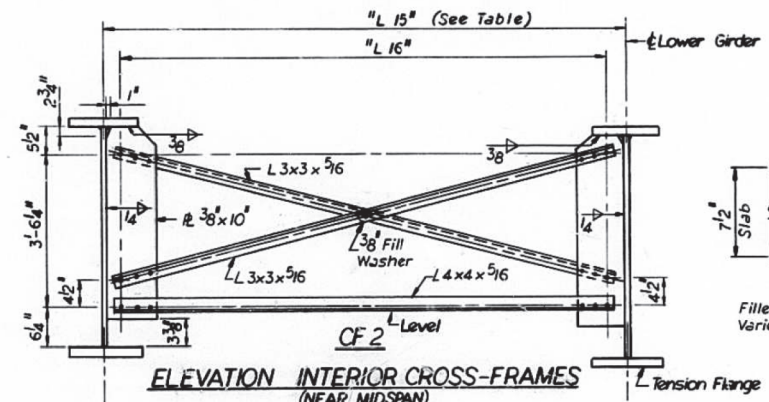
ADDED ENTIRE SHEET 8/31/2021

USER NAME = challandeske	DESIGNED -	REVISED -	STATE OF ILLINOIS DEPARTMENT OF TRANSPORTATION	EXISTING STRUCTURE PLANS		F.A.I. RTE. 255	SECTION 60-7HB-BP-1	COUNTY MADISON	TOTAL SHEETS 14	SHEET NO. 13	
PLOT SCALE = 100,000' / in.	CHECKED -	REVISED -		SCALE:	SHEET	OF SHEETS	STA.	TO STA.	CONTRACT NO. 76P68		
PLOT DATE = 8/27/2021	DATE	REVISED -		ILLINOIS FED. AID PROJ.							

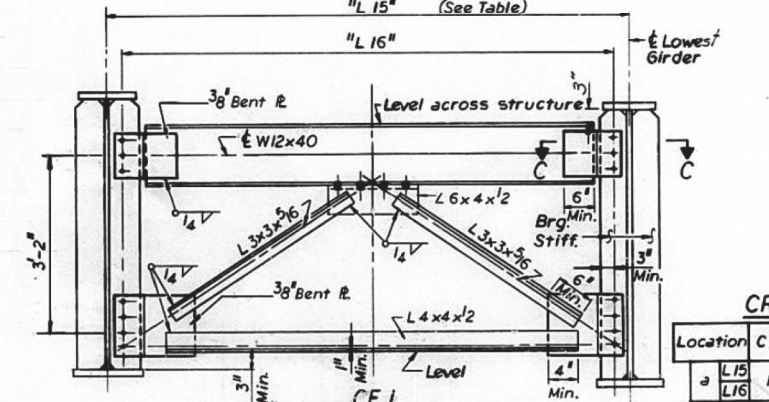
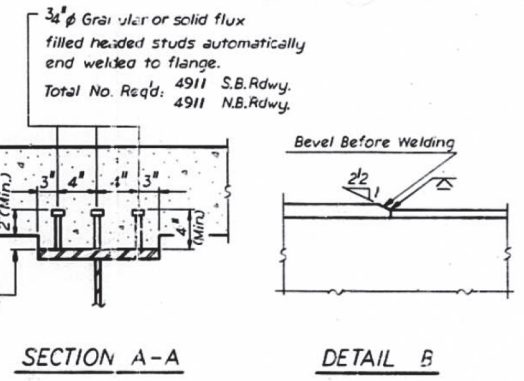


GIRDER ELEVATION
 N.T.R. = Notch Toughness Requirement is applicable
 All Steel is AASHTO M 223 G50 unless otherwise noted

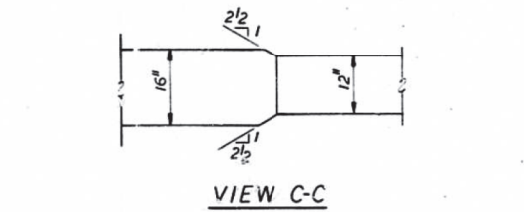
Gr. Nos.	Lengths	L	L1	L12	L13	A	B	C	D	E	F	G	H	I	J	S	S1	S2	S3	K
1	45'-5 1/2"	30'-8 3/4"	38'-0"	42'-7"	107'-5 1/8"	78'-6 3/4"	22'-0"	25'-7"	92'-0"	1'-9"	40'-6 1/2"	44'-8 3/4"	2'-0"	73'-0"	92	7	8	73	91-7"	
2	44'-9"	30'-12"	37'-10"	42'-4"	106'-11"	78'-5 1/2"	21'-4"	25'-4"	91'-0"	2'-3"	40'-6"	44'-4 1/2"	1'-9"	73'-0"	91	9	7	73	91-4"	
3	44'-7 1/2"	29'-6 1/2"	37'-8"	42'-2"	106'-5 1/8"	78'-2 5/8"	21'-8"	25'-2"	91'-0"	1'-9"	40'-4"	44'-3 1/2"	2'-3"	72'-0"	91	7	9	72	91-2"	
4 thru 8 & 9 thru 13	43'-6"	129'-0"	37'-6"	42'-0"	106'-0"	78'-2"	21'-6"	25'-0"	90'-0"	2'-3"	40'-3"	44'-3"	1'-9"	72'-0"	90	9	7	72	91-0"	
14	44'-1 1/2"	29'-6 1/2"	37'-8"	42'-2"	106'-5 1/8"	78'-2 5/8"	21'-8"	25'-2"	91'-0"	1'-9"	40'-4 1/2"	44'-3 1/2"	2'-3"	72'-0"	91	7	9	72	91-2"	
15	44'-9 1/2"	30'-11 1/2"	37'-10"	42'-4"	106'-11"	78'-5 1/2"	21'-4"	25'-4"	91'-0"	2'-3"	40'-6"	44'-4 1/2"	1'-9"	73'-0"	91	9	7	73	91-4"	
16	45'-5 1/2"	30'-8 3/4"	38'-0"	42'-7"	107'-5 1/8"	78'-6 3/4"	22'-0"	25'-7"	92'-0"	1'-9"	40'-6 1/2"	44'-8 3/4"	2'-0"	73'-0"	92	7	8	73	91-7"	



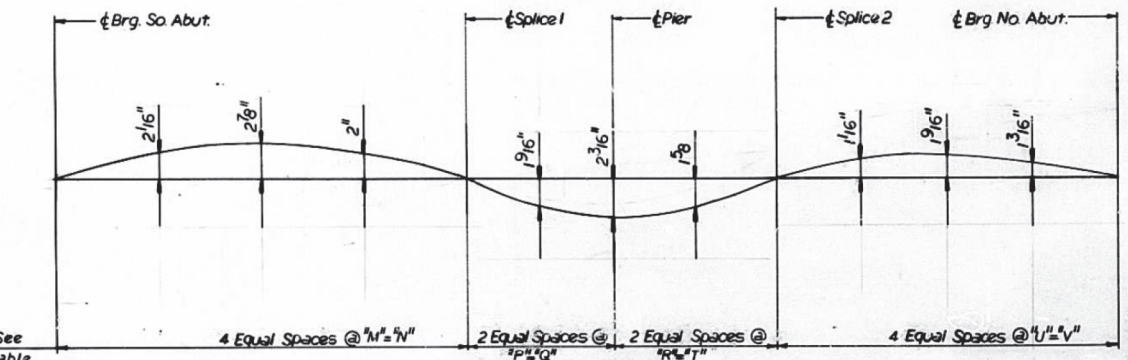
ELEVATION INTERIOR CROSS-FRAMES (NEAR MIDSPAN)
 (58 Req.)



ELEVATION END CROSS-FRAMES (CF1)
 (28 Req.)



VIEW C-C



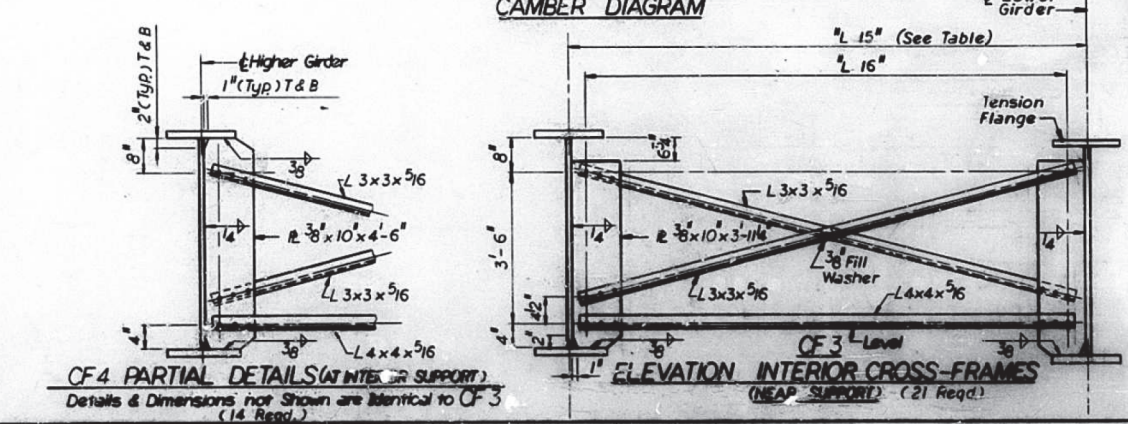
CAMBER DIAGRAM
 See Table

CAMBER LENGTHS

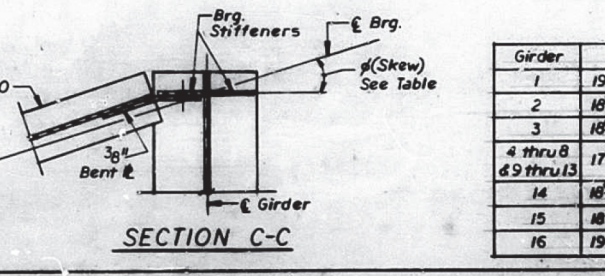
Girder	M	N	P	Q	R	T	U	V
1	26'-10 1/4"	107'-5 1/8"	19'-0"	38'-0"	21'-3 1/2"	42'-7"	22'-0 1/2"	88'-1 3/4"
2	26'-8 3/4"	106'-11"	18'-11"	37'-10"	21'-2"	42'-4"	21'-11 1/2"	87'-5 1/2"
3	26'-7 1/2"	106'-5 1/8"	18'-10"	37'-8"	21'-1"	42'-2"	21'-10 1/2"	87'-4 1/2"
4 thru 8 & 9 thru 13	26'-6"	106'-0"	18'-9"	37'-6"	21'-0"	42'-0"	21'-10 1/2"	87'-4 1/2"
14	26'-7 3/4"	106'-5 1/8"	18'-10"	37'-8"	21'-1"	42'-2"	21'-10 1/2"	87'-4 1/2"
15	26'-8 1/4"	106'-11"	18'-11"	37'-10"	21'-2"	42'-4"	21'-11 1/2"	87'-5 1/2"
16	26'-10 1/4"	107'-5 1/8"	19'-0"	38'-0"	21'-3 1/2"	42'-7"	22'-0 1/2"	88'-1 3/4"

CROSS FRAME LENGTHS BETWEEN GIRDERS

Location	CF	1-2	2-3	3-4	4-5, 5-6, 6-7, 7-8	9-10, 10-11, 11-12, 12-13	13-14	14-15	15-16
a	L15	9'-7"	9'-7 1/8"	9'-7 1/8"	9'-8 1/4"	9'-8 1/4"	5'-9 1/8"	5'-9 1/8"	5'-8 1/4"
	L16	8'-11"	8'-11 1/8"	8'-11 1/8"	9'-0 1/4"	9'-0 1/4"	5'-10 1/8"	5'-10 1/8"	5'-10 1/8"
b	L15	8'-8 1/8"	8'-9 1/8"	8'-10"	9'-3"	9'-3"	5'-9 1/8"	5'-9 1/8"	5'-8 1/4"
	L16	8'-2 1/8"	8'-3 1/8"	8'-4"	8'-9"	8'-9"	5'-3 1/8"	5'-3 1/8"	5'-2 3/4"
c	L15	8'-5"	8'-5 1/8"	8'-6 1/8"	9'-3"	9'-3"	6'-1 1/8"	6'-1 1/8"	6'-0 3/4"
	L16	7'-11"	7'-11 1/8"	8'-0 1/8"	8'-9"	8'-9"	5'-5 1/8"	5'-5 1/8"	5'-4 3/4"
d	L15	8'-1"	8'-1 1/8"	8'-2 1/8"	9'-3"	9'-3"	6'-5 1/8"	6'-5 1/8"	6'-4 3/4"
	L16	7'-7"	7'-7 1/8"	7'-8 1/8"	8'-9"	8'-9"	5'-11 1/8"	5'-11 1/8"	5'-10 3/4"
e	L15	7'-9"	7'-9 1/8"	7'-10 1/8"	9'-3"	9'-3"	6'-9 1/8"	6'-9 1/8"	6'-8 3/4"
	L16	7'-3"	7'-3 1/8"	7'-4 1/8"	8'-9"	8'-9"	6'-3 1/8"	6'-3 1/8"	6'-2 3/4"
f	L15	7'-5"	7'-5 1/8"	7'-6 1/8"	9'-3"	9'-3"	7'-1 1/8"	7'-1 1/8"	7'-0 3/4"
	L16	6'-11"	6'-11 1/8"	7'-0 1/8"	8'-9"	8'-9"	6'-7 1/8"	6'-7 1/8"	6'-6 3/4"
g	L15	7'-1 1/2"	7'-2 1/8"	7'-2 1/8"	9'-3"	9'-3"	7'-5 1/8"	7'-4 3/4"	7'-4 1/4"
	L16	6'-7 1/2"	6'-8 1/8"	6'-8 1/8"	8'-9"	8'-9"	6'-11 1/8"	6'-10 3/4"	6'-10 1/4"
h	L15	6'-10 1/2"	6'-11 1/8"	6'-11 1/8"	9'-3"	9'-3"	7'-8 1/8"	7'-7 3/4"	7'-7 3/8"
	L16	6'-4 1/2"	6'-5 1/8"	6'-5 1/8"	8'-9"	8'-9"	7'-2 1/8"	7'-1 3/4"	7'-1 3/8"
i	L15	6'-7"	6'-8"	6'-8 1/8"	9'-3"	9'-3"	7'-11 1/8"	7'-11"	7'-10 1/2"
	L16	6'-1"	6'-2"	6'-2 1/8"	8'-9"	8'-9"	7'-5 1/8"	7'-5"	7'-4 1/2"
j	L15	6'-3 1/2"	6'-4 1/8"	6'-4 1/8"	9'-3"	9'-3"	8'-3 1/8"	8'-2 3/4"	8'-2 1/4"
	L16	5'-9 1/2"	5'-10 1/8"	5'-10 1/8"	8'-9"	8'-9"	7'-9 1/8"	7'-8 3/4"	7'-8 1/4"
k	L15	5'-1 1/2"	5'-2 1/8"	5'-2 1/8"	9'-3"	9'-3"	8'-6 1/8"	8'-5 3/4"	8'-5 1/4"
	L16	5'-5 1/2"	5'-6 1/8"	5'-6 1/8"	8'-9"	8'-9"	8'-0 1/8"	8'-0 1/4"	7'-11 3/4"
l	L15	5'-8 1/8"	5'-9 1/8"	5'-9 1/8"	9'-3"	9'-3"	8'-10 1/8"	8'-9 3/4"	8'-9 1/4"
	L16	5'-2 1/8"	5'-3 1/8"	5'-3 1/8"	8'-9"	8'-9"	8'-4 1/8"	8'-3 3/4"	8'-3 1/4"
m	L15	5'-8 1/4"	5'-9 1/8"	5'-9 1/8"	9'-8 1/4"	9'-8 1/4"	9'-7 1/2"	9'-7 1/2"	9'-7 1/2"
	L16	5'-0 1/4"	5'-1 1/8"	5'-1 1/8"	9'-0 1/4"	9'-0 1/4"	8'-11 1/2"	8'-11 1/2"	8'-11 1/2"



CF4 PARTIAL DETAILS (AT INTERIOR SUPPORT)
 Details & Dimensions not shown are identical to CF-3 (14 Req.)



SECTION C-C

Notes:
 All bolts are 3/4" high strength. Holes = 1/16" #.
 2 Hardened Washers are required over holes.
 Cross Frames and all connecting plates shall be M183

Work this sht with sht. 12

ILLINOIS DIVISION OF HIGHWAYS

F.A.I. ROUTE 270
 PROJECT SECTION 60-7HB
 MADISON COUNTY

FRAMING DETAILS

Designed By: LP Drawn By: LK
 Checked By: AU Checked By: LP

TORNROSE, CAMPBELL & ASSOCIATES

FOR INFORMATION ONLY

ADDED ENTIRE SHEET 8/31/2021

USER NAME	DESIGNED	REVISED
= challandeske	-	-
	DRAWN	REVISED
	CHECKED	REVISED
	DATE	REVISED

STATE OF ILLINOIS
DEPARTMENT OF TRANSPORTATION

EXISTING STRUCTURE PLANS

SCALE: SHEET OF SHEETS STA. TO STA.

F.A.I. RTE.	SECTION	COUNTY	TOTAL SHEETS	SHEET NO.
255	60-7HB-BP-1	MADISON	14	14

CONTRACT NO. 76P68
 ILLINOIS FED. AID PROJECT

MODEL: Default
 FILE: \\paw-beherty.com\paw\DOT\Documents\DOT Offices\Bridges\Bridges\CADD\Drawings\CADD\Drawings\2021\2021-08-27\2021-08-27-2021-08-27.dgn