

STATE OF ILLINOIS  
DEPARTMENT OF TRANSPORTATION

F.A.I. RTE.	SECTION	COUNTY	TOTAL SHEETS	SHEET NO.
255	60-7HB-BP-1	MADISON	10	1
		ILLINOIS	CONTRACT NO. 76P68	

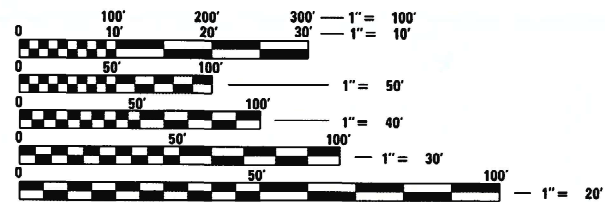
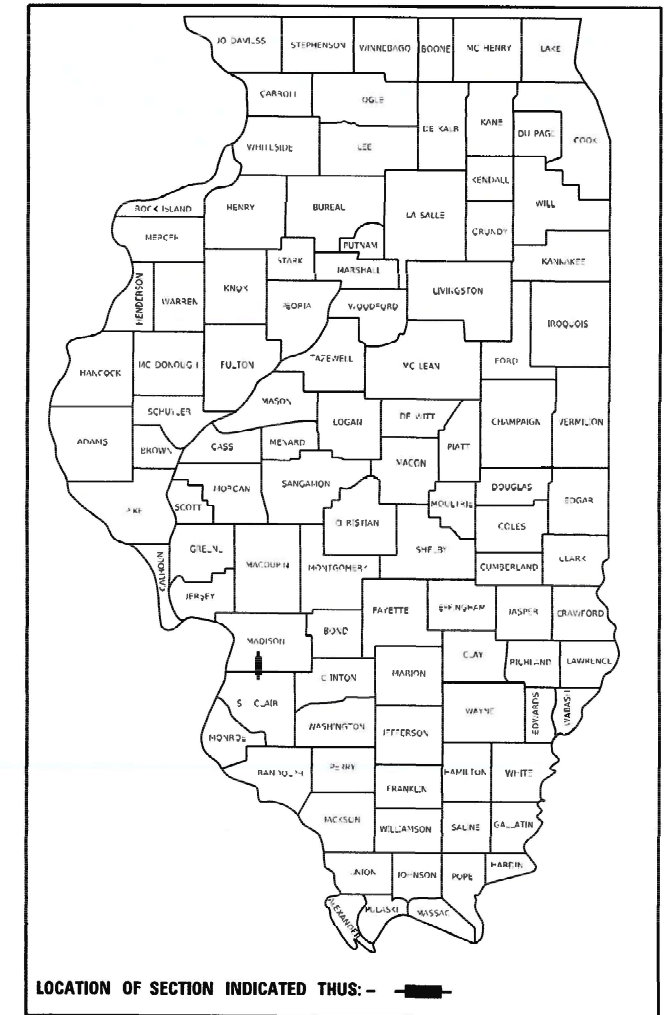
FOR INDEX OF SHEETS, SEE SHEET NO. 2

**PROPOSED  
HIGHWAY PLANS**

**FAI ROUTE 255 (I-255)  
SECTION 60-7HB-BP-1  
PROJECT NHPP-24JQ(644)  
BRIDGE PAINTING  
MADISON COUNTY**

C-98-106-21

D-98-075-21

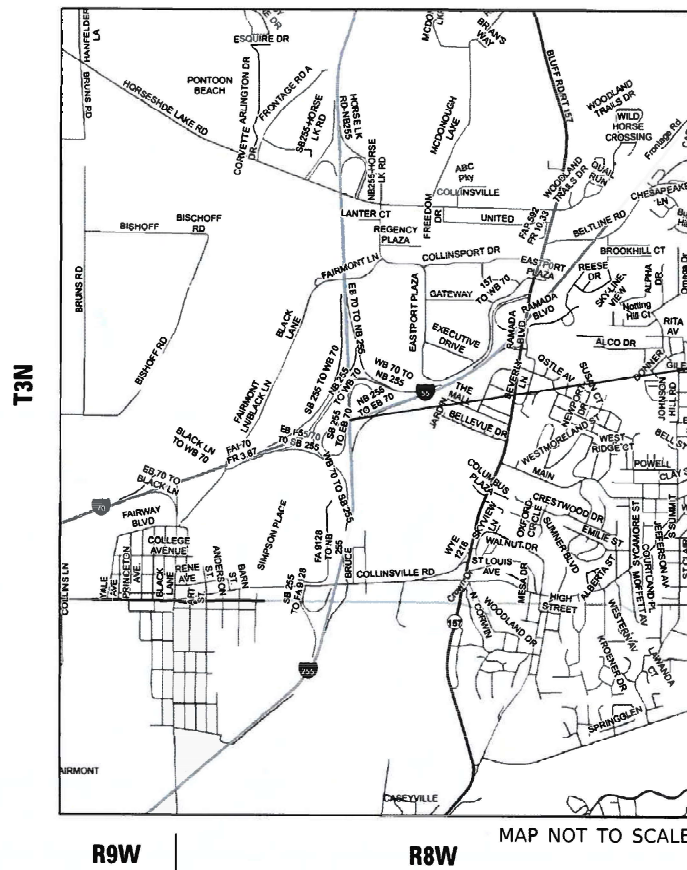


FULL SIZE PLANS HAVE BEEN PREPARED USING STANDARD ENGINEERING SCALES. REDUCED SIZED PLANS WILL NOT CONFORM TO STANDARD SCALES. IN MAKING MEASUREMENTS ON REDUCED PLANS, THE ABOVE SCALES MAY BE USED.

J.U.L.I.E.  
JOINT UTILITY LOCATION INFORMATION FOR EXCAVATORS  
1-800-892-0123  
OR 811

PROJECT ENGINEER: CHERYL KEPLAR (618) 346-3123  
PROJECT MANAGER: KAREN CHALLANDES (618) 346-3329

CONTRACT NO. 76P68



**PROJECT LOCATION**  
SN 060-0206 NB  
SN 060-0207 SB  
LAT: 38.67276  
LONG: -90.02947

NET/GROSS LENGTH = 275 FT. = 0.0521 MILE

STATE OF ILLINOIS  
DEPARTMENT OF TRANSPORTATION

SUBMITTED June 24, 2021  
*Keith Roberts*  
REGIONAL ENGINEER

August 13, 2021  
*Scott A. Elk*  
ENGINEER OF DESIGN AND ENVIRONMENT

August 13, 2021  
*James J. Gu...*  
DIRECTOR OF HIGHWAYS PROJECT IMPLEMENTATION

**PRINTED BY THE AUTHORITY  
OF THE STATE OF ILLINOIS**

## INDEX OF SHEETS

- 1 COVER SHEET
- 2 INDEX OF SHEETS, HIGHWAY STANDARDS, GENERAL NOTES, COMMITMENTS, AND ADT
- 3-4 SUMMARY OF QUANTITIES
- 5-10 STAGING SHEETS

## HIGHWAY STANDARDS

000001-08  
 0001006  
 701101-05  
 701400-10  
 701402-12  
 701426-09  
 701428-01  
 701451-05  
 701446-11  
 701901-08  
 704001-08  
 780001-05

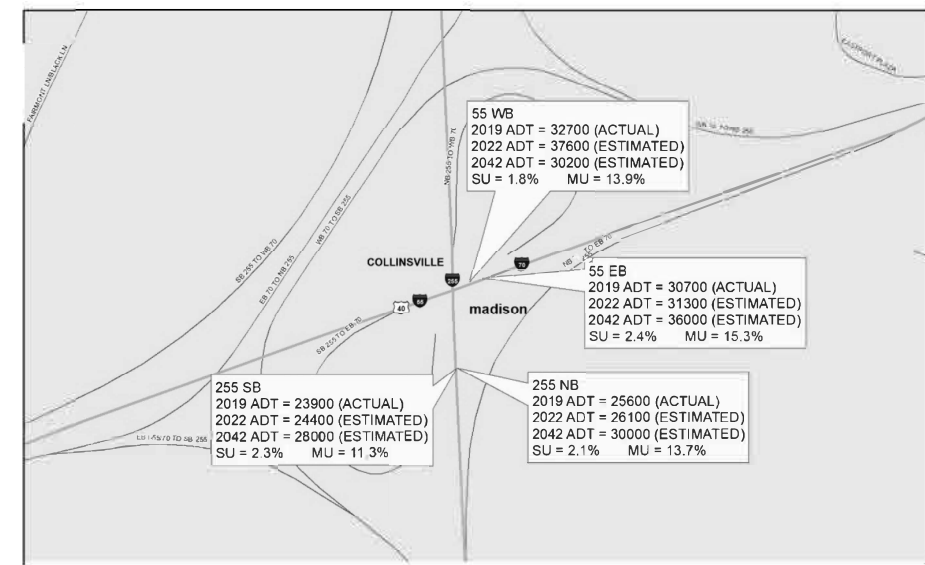
## GENERAL NOTES

1. UTILITIES KNOWN TO HAVE FACILITIES IN THE AREA:  
 AT&T ILLINOIS COMMUNICATIONS  
 CHARTER COMMUNICATIONS, INC. CABLE TV  
 DEPARTMENT OF CENTRAL MANAGEMENT SERVICES COMMUNICATIONS  
 CITY OF COLLINSVILLE WATER AND SANITARY SEWER
2. THE DEPARTMENT STRONGLY ENCOURAGES THE PRIME CONTRACTOR AND THEIR APPROVED SUB-CONTRACTORS TO HIRE MINORITY, WOMEN AND DISADVANTAGED INDIVIDUALS FROM ITS FEDERALLY FUNDED HIGHWAY CONSTRUCTION CAREERS TRAINING PROGRAM (HCCTP) TO HELP MEET WORKFORCE AND TRAINEE GOALS. THIS PROGRAM IS TRAINING MINORITIES, WOMEN AND DISADVANTAGED INDIVIDUALS IN HIGHWAY CONSTRUCTION-RELATED SKILLS, E.G., MATH FOR THE TRADES, JOB READINESS, TECHNICAL SKILLS COURSEWORK (CARPENTRY, CONCRETE FLATWORK, BLUEPRINT READING, SITE PLANS, SITE WORK, TOOLS USE, ETC.) AND OSHA 10 HOUR CERTIFICATION, TO PREPARE THEM FOR A CAREER IN THE HIGHWAY CONSTRUCTION TRADES. GRADUATES ARE WELL-TRAINED AND READY TO BECOME PRODUCTIVE ENTRY-LEVEL CONSTRUCTION WORKERS. CONTACT THE DISTRICT 8 EEO OFFICE AT 618-346-3360 AND/OR THE HCCTP COORDINATOR AT 618-874-6528 TO LEARN MORE ABOUT THE PROGRAM AND FOR ASSISTANCE IN MEETING WORKFORCE AND TRAINEE GOALS.
3. SN 060-0207 HAS A 'RIGHT LANE EXIT ONLY' DECAL ON THE WEST BEAM SURFACE. THIS DECAL SHALL BE REMOVED DURING THE SURFACE PREPARATION. THIS WORK SHALL BE INCLUDED IN THE COST OF CLEANING AND PAINTING STEEL BRIDGE. APPLICATION OF A NEW DECAL WILL BE COMPLETED BY IDOT PERSONNEL.
4. THE SSPC-QP1 AND SSPC-QP2 CERTIFICATIONS WILL BE REQUIRED FOR ALL BRIDGES.
5. FOR LOCATIONS 1 AND 2 CLEANING AND PAINTING OF THE EXISTING STRUCTURAL STEEL SHALL BE AS SPECIFIED IN THE SPECIAL PROVISION FOR "CLEANING AND PAINTING EXISTING STEEL STRUCTURES". ALL EXISTING STEEL SHALL BE PAINTED ACCORDING TO THE REQUIREMENTS OF PAINT SYSTEM 1-OZ/E/U. THE COLOR OF THE FINAL FINISH COAT FOR ALL INTERIOR STEEL SURFACES SHALL BE GRAY, MUNSELL NO 5B 7/1. THE COLOR OF THE FINAL FINISH COAT FOR THE EXTERIOR AND BOTTOM FLANGES OF THE FASCIA BEAMS SHALL BE REDDISH BROWN, MUNSELL NO 2.5 YR 3/4.
6. FOUR (4) CHANGEABLE MESSAGE BOARD SHALL BE REQUIRED FOR THIS PROJECT. THEY SHALL BE PLACED TWO WEEKS PRIOR TO ANY LANE CLOSURE AND SHALL REMAIN UP FOR THE DURATION OF THE PROJECT. THE CHANGEABLE MESSAGE BOARDS SHALL BE PLACED AS SPECIFIED IN THE PLANS OR AT THE DIRECTION OF THE ENGINEER.

## COMMITMENTS

NONE

## ADT



REV. - MS

MODEL: MODELNAME\$  
FILE NUMBER: FILE#

USER NAME = \$USER\$	DESIGNED -	REVISED -
	DRAWN -	REVISED -
PLOT SCALE = \$SCALE\$	CHECKED -	REVISED +
PLOT DATE = \$DATE\$	DATE -	REVISED +

STATE OF ILLINOIS  
 DEPARTMENT OF TRANSPORTATION

INDEX OF SHEETS, HIGHWAY STANDARDS  
 GENERAL NOTES, COMMITMENTS, AND ADT

SCALE: SHEET OF SHEETS STA. TO STA.

F.A.I. RTE.	SECTION	COUNTY	TOTAL SHEETS	SHEET NO.
255	60-7HB-BP-1	MADISON	10	2
ILLINOIS FED. AID PROJECT			CONTRACT NO. 76P68	

90% FED 10% STATE

CODE NO.	ITEM	UNIT	TOTAL QUANTITY	CONSTRUCTION CODE	
				URBAN	URBAN
				MINOR STRUCTURES 0047 060-0206	MINOR STRUCTURES 0047 060-0207
67100100	MOBILIZATION	L SUM	1	0.5	0.5
70100207	TRAFFIC CONTROL AND PROTECTION, STANDARD 701402	EACH	4	2	2
70100430	TRAFFIC CONTROL AND PROTECTION, STANDARD 701446	EACH	2	1	1
70100820	TRAFFIC CONTROL AND PROTECTION, STANDARD 701451	L SUM	1	0.5	0.5
70107005	PAVEMENT MARKING BLACKOUT TAPE, 5"	FOOT	2289	1144	1145
70107025	CHANGEABLE MESSAGE SIGN	CAL DA	488	244	244
70300150	SHORT TERM PAVEMENT MARKING REMOVAL	SQ FT	954	477	477
70300220	TEMPORARY PAVEMENT MARKING - LINE 4"	FOOT	9088	4544	4544
70400100	TEMPORARY CONCRETE BARRIER	FOOT	775	387.5	387.5
70400200	RELOCATE TEMPORARY CONCRETE BARRIER	FOOT	775	387.5	387.5
70600260	IMPACT ATTENUATORS, TEMPORARY (FULLY REDIRECTIVE, NARROW), TEST LEVEL 3	EACH	2	1	1
70600332	IMPACT ATTENUATORS, RELOCATE (FULLY REDIRECTIVE, NARROW), TEST LEVEL 3	EACH	2	1	1
X0326808	INTERSTATE WEEKEND CLOSURE, SPECIAL	L SUM	1	0.5	0.5
X5060601	CONTAINMENT AND DISPOSAL OF NON-LEAD PAINT CLEANING RESIDUES NO. 1	L SUM	1	1	

MODEL NUMBER: MAMES  
FILE NAME: 311215

USER NAME = \$USERS	DESIGNED -	REVISED -
	DRAWN -	REVISED -
PLOT SCALE = \$SCALES	CHECKED -	REVISED -
PLOT DATE = \$DATES	DATE -	REVISED -

**STATE OF ILLINOIS  
DEPARTMENT OF TRANSPORTATION**

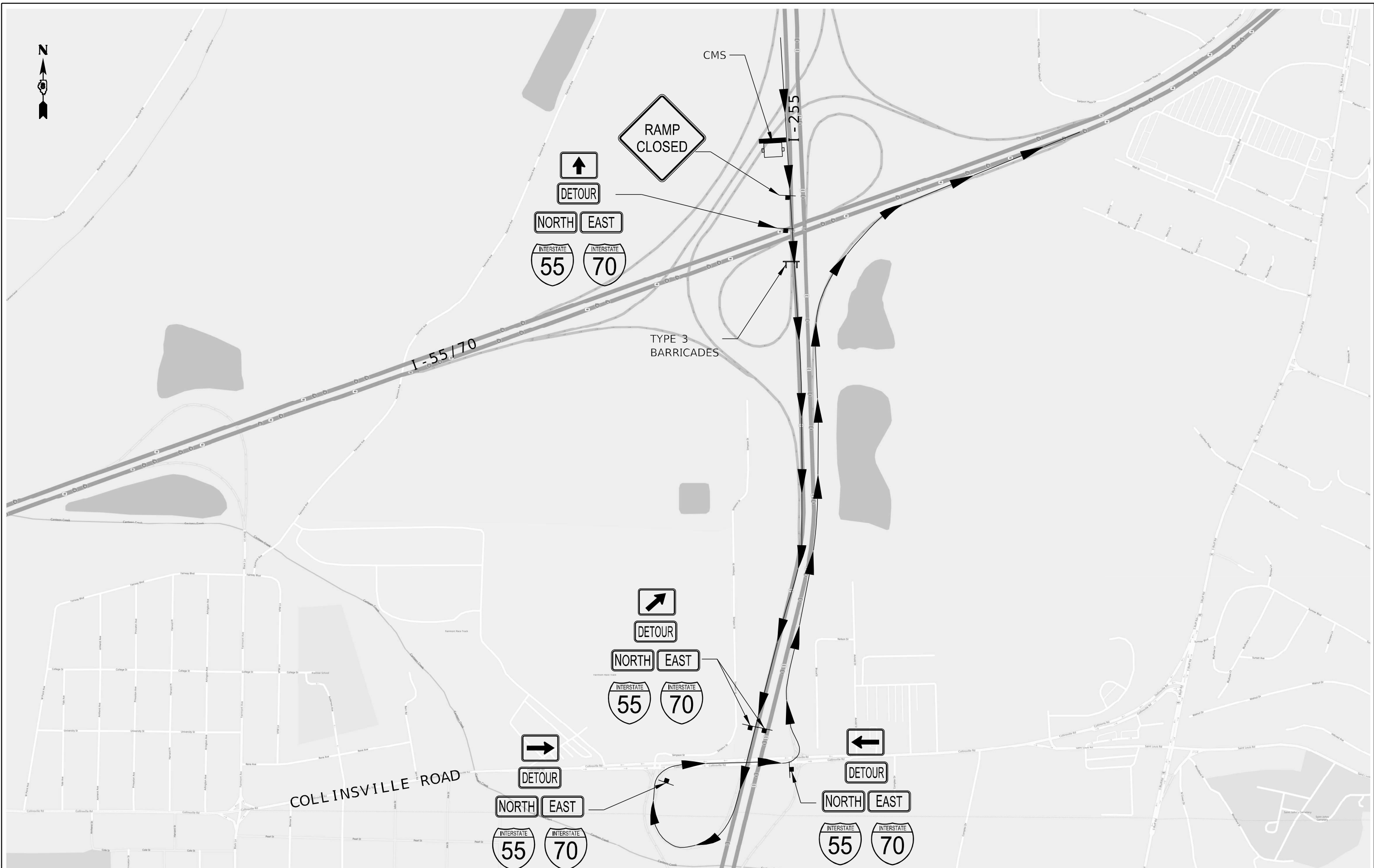
**SUMMARY OF QUANTITIES**

SCALE: SHEET OF SHEETS STA. TO STA.

F.A.I. RTE.	SECTION	COUNTY	TOTAL SHEETS	SHEET NO.
255	60-7HB-BP-1	MADISON	10	3
			CONTRACT NO. 76P68	
		ILLINOIS	FED. AID PROJECT	







MODEL: I40DELMAMF  
FILE NAME: ST1E1

USER NAME = SUSERS	DESIGNED -	REVISED -
	DRAWN -	REVISED -
PLOT SCALE = SCALES	CHECKED -	REVISED -
PLOT DATE = SDATES	DATE -	REVISED -

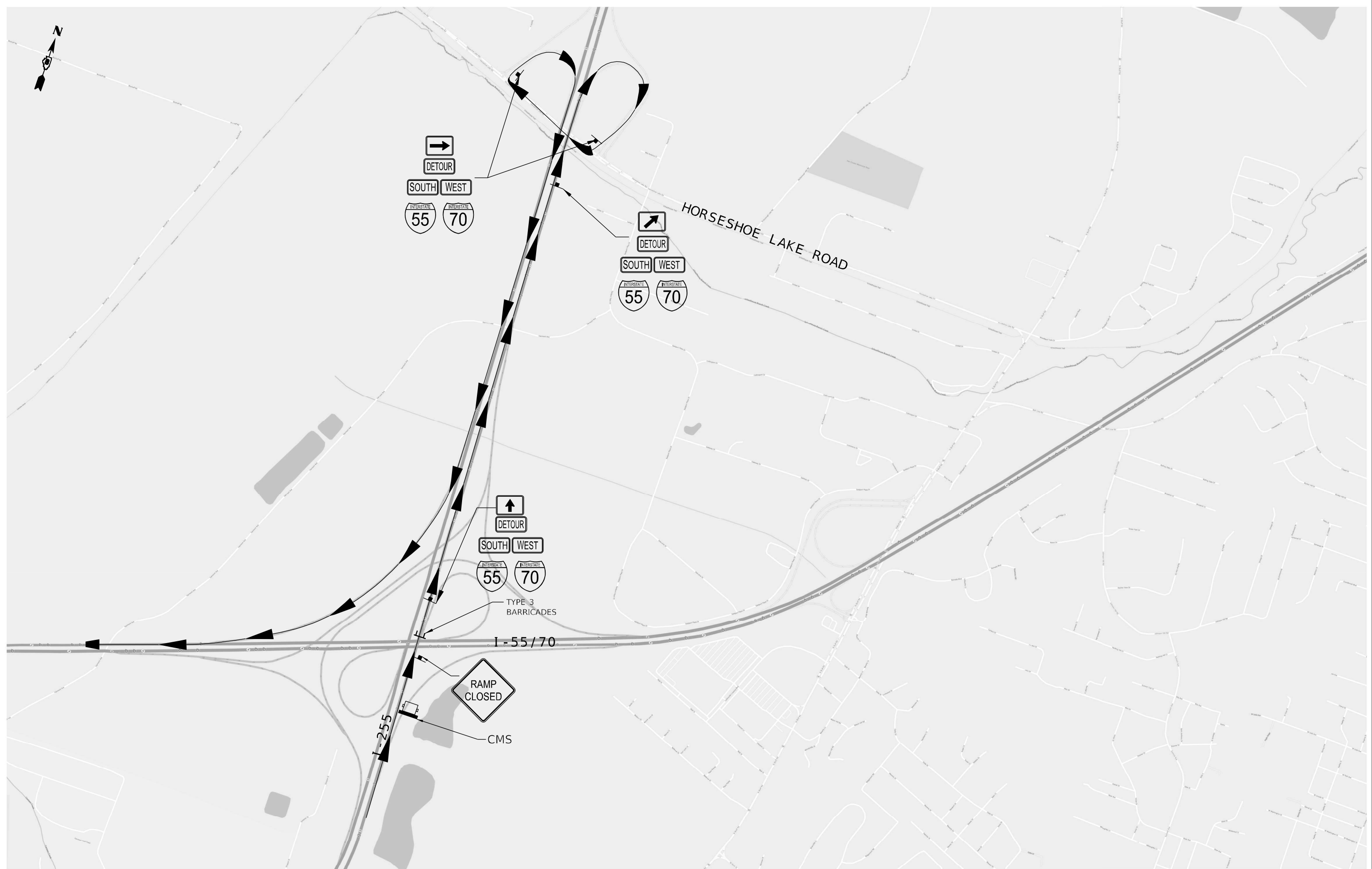
**STATE OF ILLINOIS  
DEPARTMENT OF TRANSPORTATION**

**PRE-STAGE RAMP CLOSURE  
SB I-255 TO EB I-55/70**

SCALE: SHEET 2 OF 5 SHEETS STA. TO STA.

F.A.I. RTE.	SECTION	COUNTY	TOTAL SHEETS	SHEET NO.
255	60-7HB-BP-1	MADISON	10	5
CONTRACT NO. 76P68				
ILLINOIS FED. AID PROJECT				





USER NAME = \$USERS	DESIGNED -	REVISED -
	DRAWN -	REVISED -
PLOT SCALE = \$SCALES	CHECKED -	REVISED -
PLOT DATE = \$DATES	DATE -	REVISED -

**STATE OF ILLINOIS  
DEPARTMENT OF TRANSPORTATION**

**PRE-STAGE RAMP CLOSURE  
I-255 NB TO WB I-55/70**

SCALE: SHEET 4 OF 5 SHEETS STA. TO STA.

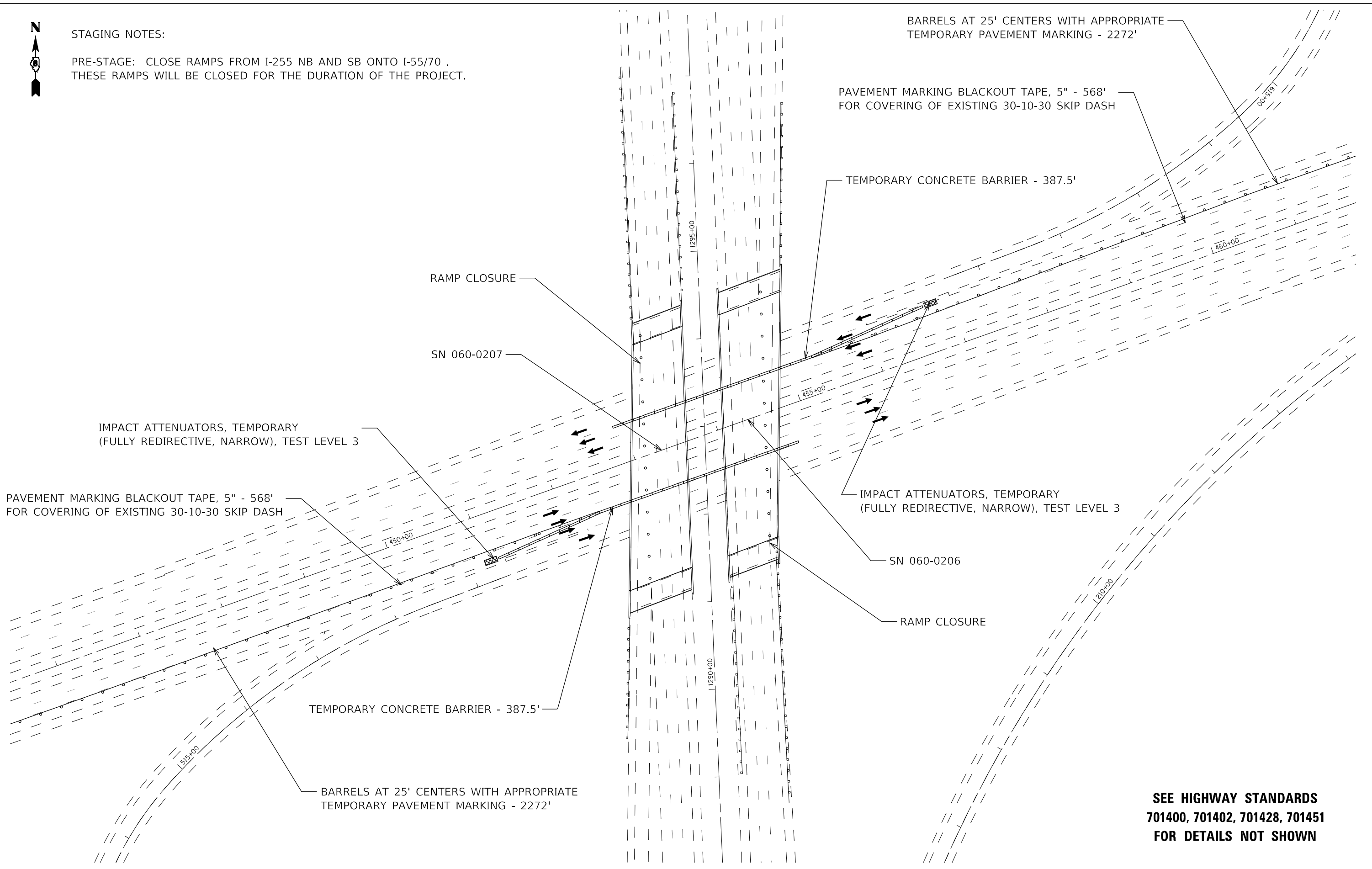
F.A.I. RTE.	SECTION	COUNTY	TOTAL SHEETS	SHEET NO.
255	60-7HB-BP-1	MADISON	10	6
CONTRACT NO. 76P68				
ILLINOIS FED. AID PROJECT				





STAGING NOTES:

PRE-STAGE: CLOSE RAMPS FROM I-255 NB AND SB ONTO I-55/70 .  
 THESE RAMPS WILL BE CLOSED FOR THE DURATION OF THE PROJECT.



**SEE HIGHWAY STANDARDS  
 701400, 701402, 701428, 701451  
 FOR DETAILS NOT SHOWN**

MODEL NUMBER: 11/15/15  
 FILE NAME: ST1.E15

USER NAME = \$USERS	DESIGNED -	REVISED -
	DRAWN -	REVISED -
PLOT SCALE = \$SCALES	CHECKED -	REVISED -
PLOT DATE = \$DATES	DATE -	REVISED -

**STATE OF ILLINOIS  
 DEPARTMENT OF TRANSPORTATION**

**STAGE 1 TRAFFIC CONTROL**

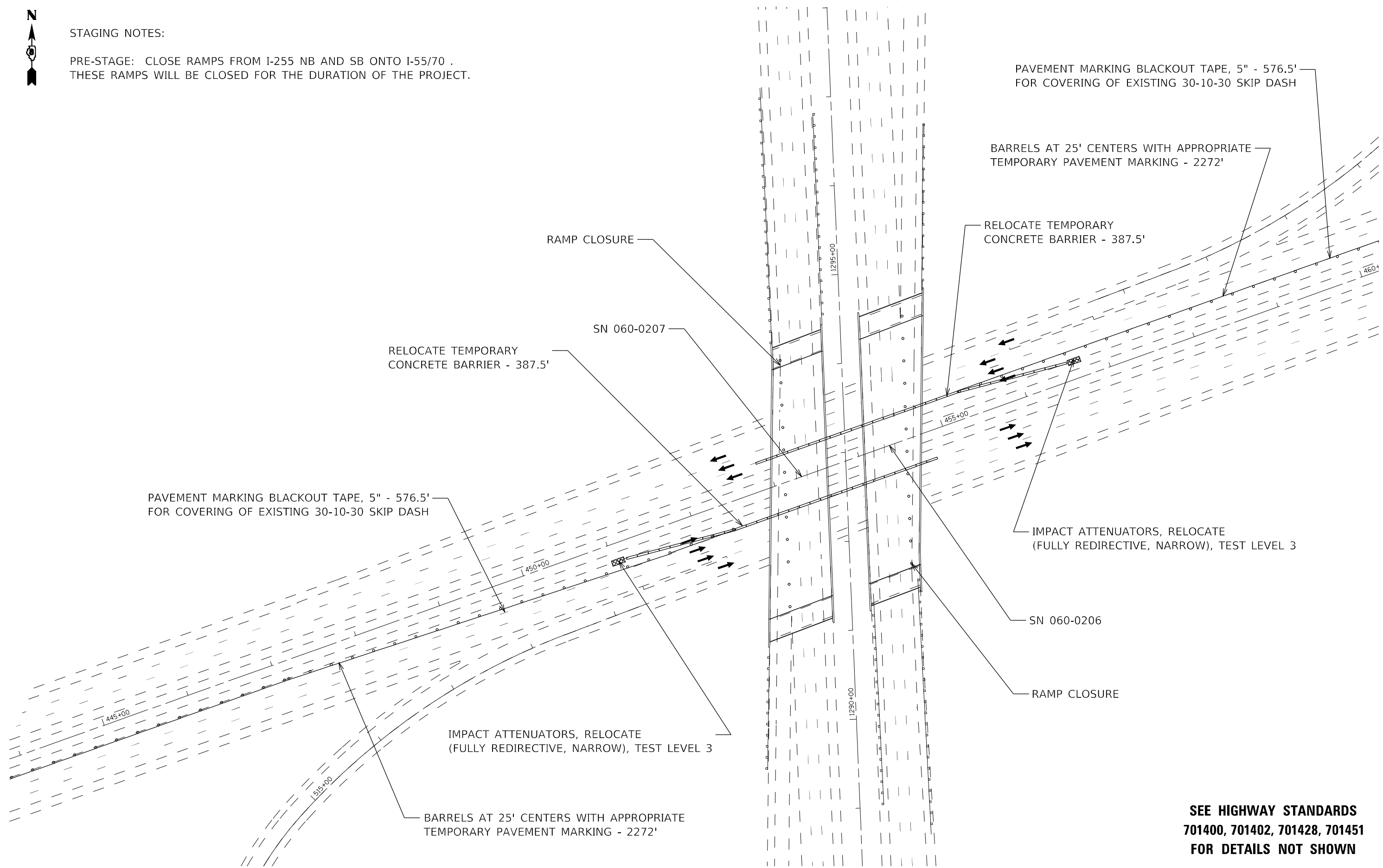
SCALE: SHEET OF SHEETS STA. TO STA.

F.A.I. RTE.	SECTION	COUNTY	TOTAL SHEETS	SHEET NO.
255	60-7HB-BP-1	MADISON	10	7
CONTRACT NO. 76P68				
ILLINOIS FED. AID PROJECT				



STAGING NOTES:

PRE-STAGE: CLOSE RAMPS FROM I-255 NB AND SB ONTO I-55/70 .  
THESE RAMPS WILL BE CLOSED FOR THE DURATION OF THE PROJECT.



**SEE HIGHWAY STANDARDS  
701400, 701402, 701428, 701451  
FOR DETAILS NOT SHOWN**

MODEL: 4400ELEM.MXES  
FILE NAME: 311.EUS

USER NAME = \$USERS	DESIGNED -	REVISED -
	DRAWN -	REVISED -
PLOT SCALE = \$SCALES	CHECKED -	REVISED -
PLOT DATE = \$DATES	DATE -	REVISED -

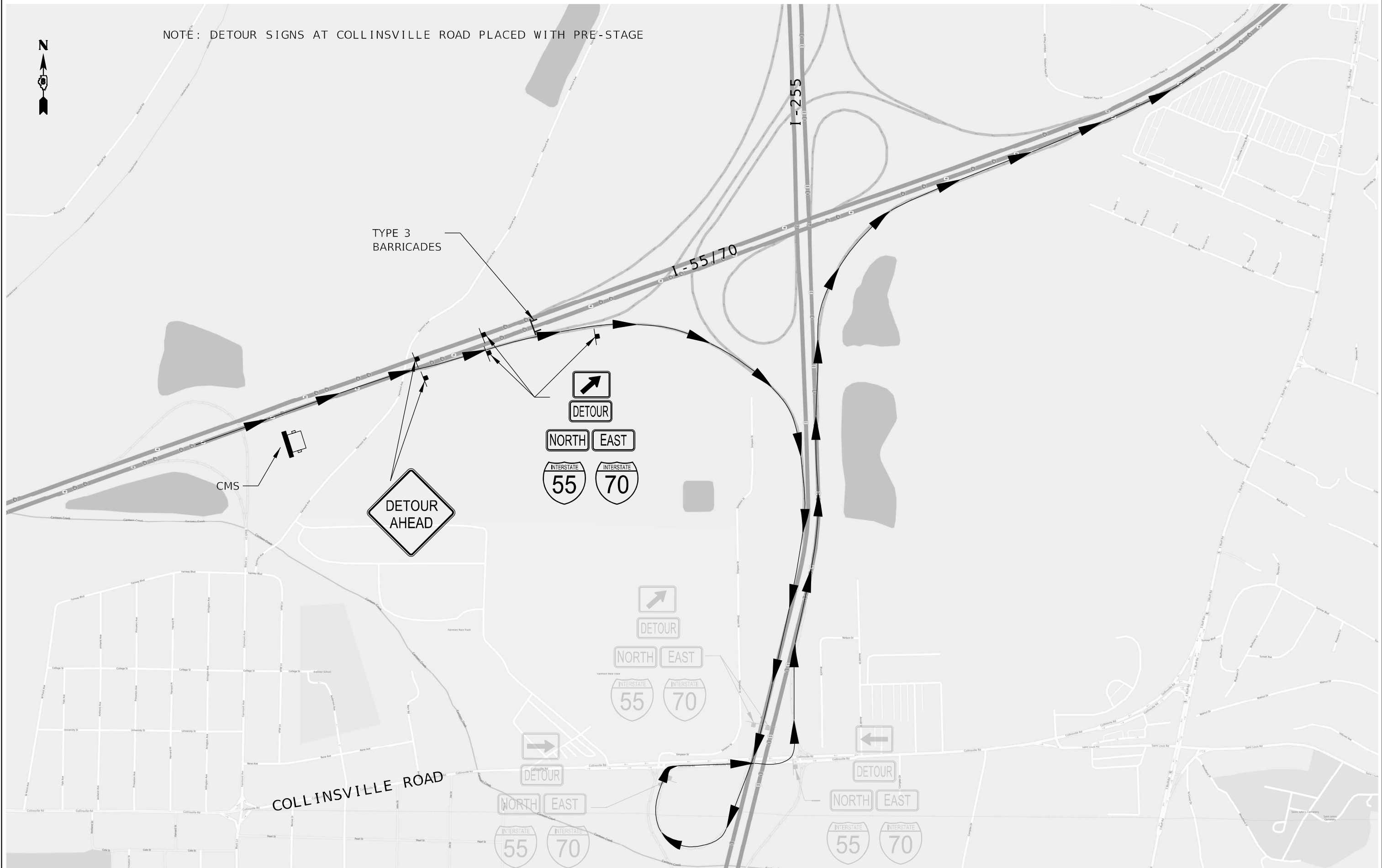
**STATE OF ILLINOIS  
DEPARTMENT OF TRANSPORTATION**

**STAGE 2 TRAFFIC CONTROL**

SCALE: SHEET OF SHEETS STA. TO STA.

F.A.I. RTE.	SECTION	COUNTY	TOTAL SHEETS	SHEET NO.
255	60-7HB-BP-1	MADISON	10	8
			CONTRACT NO. 76P68	
ILLINOIS FED. AID PROJECT				

NOTE: DETOUR SIGNS AT COLLINSVILLE ROAD PLACED WITH PRE-STAGE



USER NAME = SUSERS	DESIGNED -	REVISED -
	DRAWN -	REVISED -
PLOT SCALE = SCALES	CHECKED -	REVISED -
PLOT DATE = SDATES	DATE -	REVISED -

**STATE OF ILLINOIS  
DEPARTMENT OF TRANSPORTATION**

**STAGE III I-55/70 EAST BOUND AND NORTH BOUND DETOUR  
WEEKEND CLOSURE**

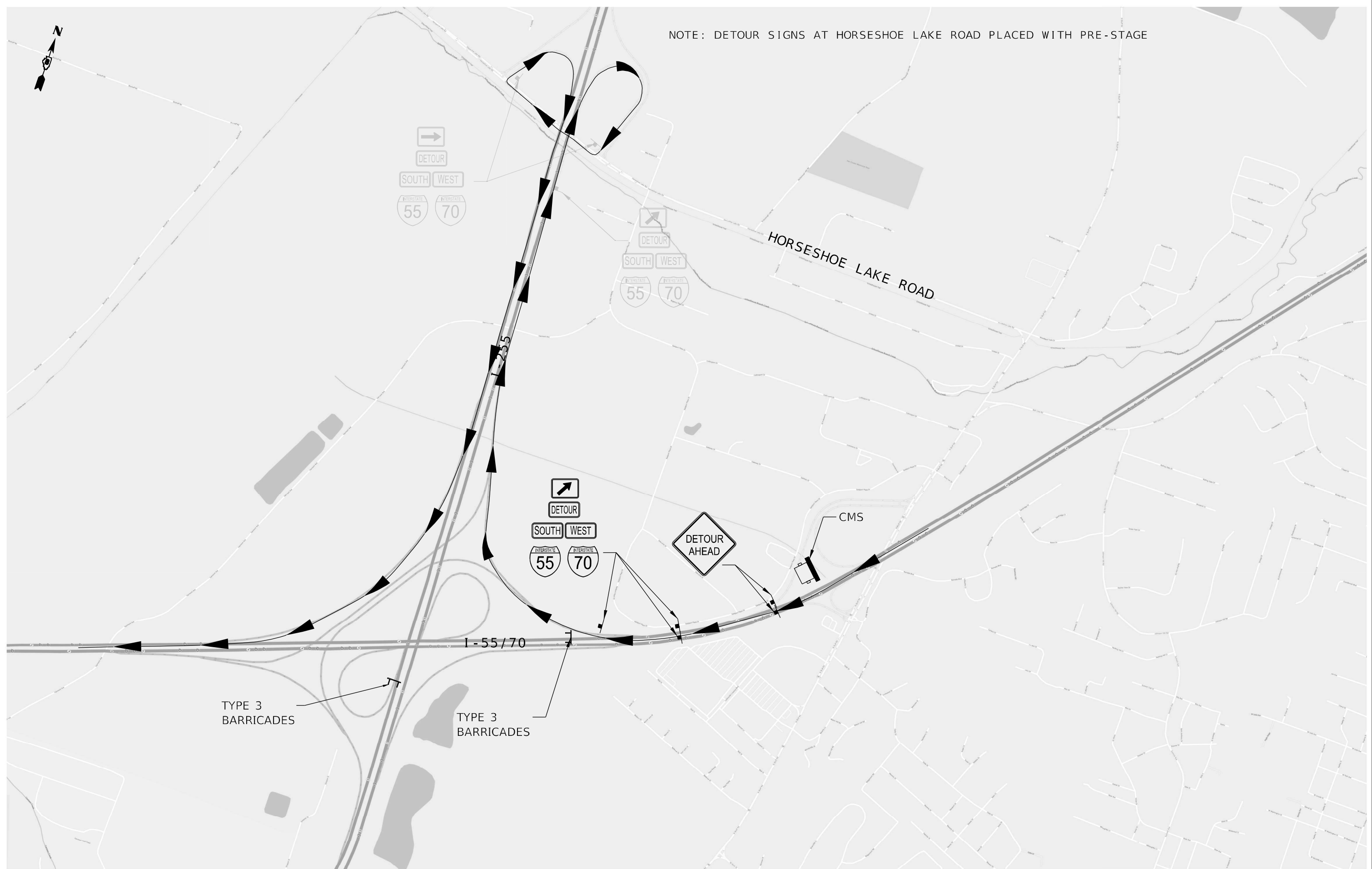
SCALE: SHEET 3 OF 5 SHEETS STA. TO STA.

F.A.I. RTE.	SECTION	COUNTY	TOTAL SHEETS	SHEET NO.
255	60-7HB-BP-1	MADISON	10	9
CONTRACT NO. 76P68				

ILLINOIS FED. AID PROJECT



NOTE: DETOUR SIGNS AT HORSESHOE LAKE ROAD PLACED WITH PRE-STAGE



USER NAME = \$USERS	DESIGNED -	REVISED -
	DRAWN -	REVISED -
PLOT SCALE = \$SCALE\$	CHECKED -	REVISED -
PLOT DATE = \$DATE\$	DATE -	REVISED -

**STATE OF ILLINOIS  
DEPARTMENT OF TRANSPORTATION**

**STAGE III I-55/70 WEST BOUND AND SOUTH BOUND DETOUR  
WEEKEND CLOSURE**

SCALE: SHEET 5 OF 5 SHEETS STA. TO STA.

F.A.I. RTE.	SECTION	COUNTY	TOTAL SHEETS	SHEET NO.
255	60-7HB-BP-1	MADISON	10	10
CONTRACT NO. 76P68				

ILLINOIS FED. AID PROJECT

MODEL: \$MODELNAME\$  
FILE NAME: \$FILE\$

