

STATE OF ILLINOIS
DEPARTMENT OF TRANSPORTATION

F.A.P. RTE	SECTION	COUNTY	TOTAL SHEETS	SHEET NO.
881	D9 RESURFACE 2022-1	JOHNSON	11	1
		ILLINOIS	CONTRACT NO. 78889	

FOR INDEX OF SHEETS, SEE SHEET NO. 3
FOR SUMMARY OF QUANTITIES, SEE SHEET NO. 5-6

**PROPOSED
HIGHWAY PLANS**

FAP ROUTE 881 (US 45)
SECTION D9 RESURFACE 2022-1
RESURFACING
JOHNSON COUNTY

C-99-088-21

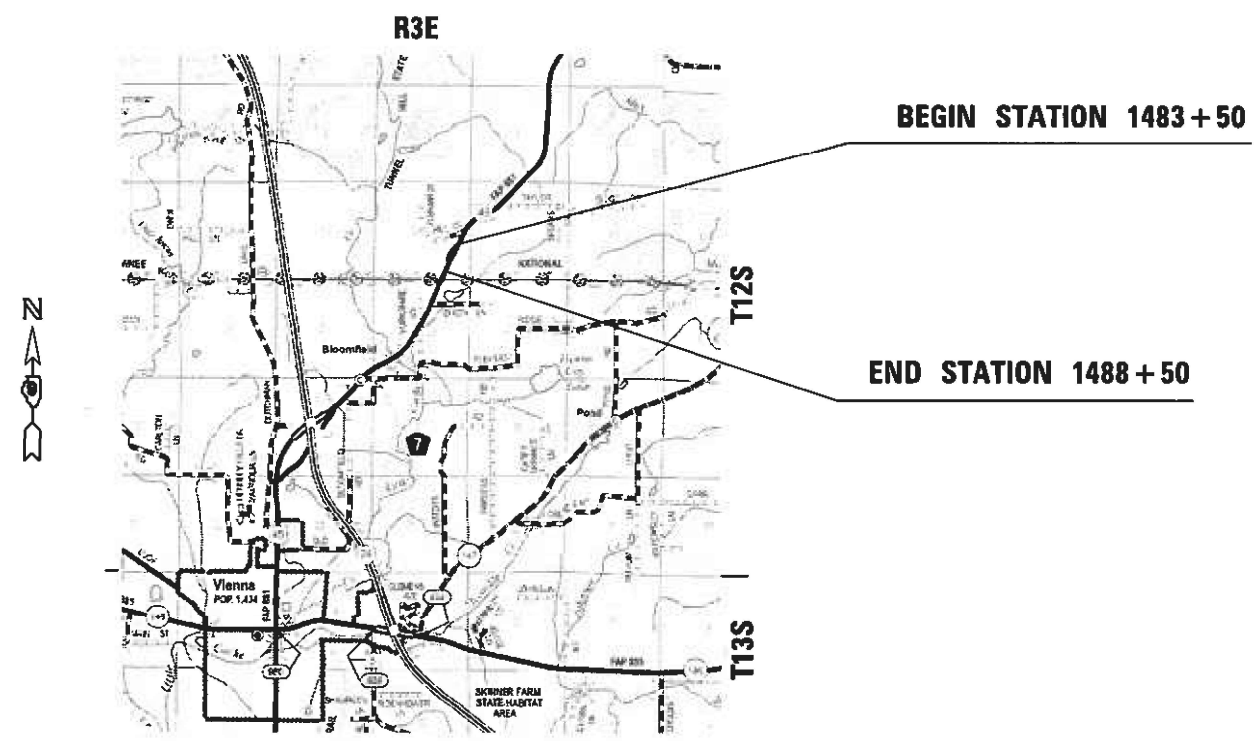


TRAFFIC DATA

US 45 (2019)
ADT = 2,000, 13% TRUCKS

TOWNSHIPS

VIENNA



STATE OF ILLINOIS
DEPARTMENT OF TRANSPORTATION

SUBMITTED 09-14-2021
[Signature] REGIONAL ENGINEER

August 13, 2021
[Signature] ENGINEER OF DESIGN AND ENVIRONMENT

August 13, 2021
[Signature] DIRECTOR OF HIGHWAYS PROJECT IMPLEMENTATION 13

J.U.L.I.E.
JOINT UTILITY LOCATION INFORMATION FOR EXCAVATORS
1-800-892-0123
OR 811

PROJECT ENGINEER JOHN ROBINSON
PROJECT MANAGER SUSAN POE

CONTRACT NO. 78889

GROSS LENGTH = 500 FT. = 0.096 MILE
NET LENGTH = 500 FT. = 0.096 MILE

**PRINTED BY THE AUTHORITY
OF THE STATE OF ILLINOIS**

INDEX OF SHEETS

SHEET NO	DESCRIPTION
1	COVER SHEET
2	SIGNATURE SHEET
3	INDEX OF SHEETS, HIGHWAY STANDARDS, COMMITMENTS, GENERAL NOTES
4	MIX DESIGN
5-6	SUMMARY OF QUANTITIES
7	TYPICAL SECTIONS: US 45
8	PLAN PROFILE
9	SCHEDULES
10-11	DETAILS

HIGHWAY STANDARDS

- 000001-08_STANDARDSYMBOLSABBREVIATIONS&PATTERNS-001
- 001006_DECIMALOFINCH&FOOT
- 701001-02_OFFRDOP-2L2W-15FTMINFROMEOP
- 701006-05_OFFRDOP-2L2W-15FTTOEOP
- 701301-04_LNCLOSURE2L2W-SHORTTIMEOP
- 701306-04_LNCLOSURE2L2W-SLOWMOVEOPDAYONLY45MPHORMORE
- 701311-03_LNCLOSURE2L2W-MOVINGOPDAYONLY
- 701901-08_TRAFCNTRLDEVICES
- 780001-05_TYPICALPVMTMRKINGS

GENERAL NOTES

FACTORS USED FOR ESTIMATING PLAN QUANTITIES ARE AS FOLLOWS AND SHALL NOT BE USED FOR THE BASIS OF FINAL QUANTITIES:

ALL HOT MIX ASPHALT 2.016 TONS/CU. YD.

ALL AGGREGATE 2.05 TONS/CU. YD.

THE ALGEBRAIC DIFFERENCE BETWEEN THE PAVEMENT AND SHOULDER SLOPES SHALL NOT EXCEED 10%. THE SHOULDER ON THE OUTSIDE OF SUPERELEVATED CURVES SHALL BE FLATTENED ACCORDINGLY.

THE QUANTITY OF SHORT TERM PAVEMENT MARKING SHOWN IN THE PLANS IS BASED ON ONE APPLICATION EACH FOR THE HMA SURFACE REMOVAL, BINDER COURSE, AND SURFACE COURSE

THE CONTRACTOR SHALL STAMP STATIONING IN THE PROPOSED HOT MIX ASPHALT SURFACE AT 300 FT INTERVALS ON ALTERNATING SIDES OF THE PAVEMENT AND AS DIRECTED BY THE ENGINEER. THE STATION SYMBOL STAMPS USED SHALL BE FURNISHED BY THE CONTRACTOR. THEY SHALL BE 5 1/2 IN. TALL, OF A DESIGN APPROVED BY THE ENGINEER, AND SHALL REMAIN THE PROPERTY OF THE CONTRACTOR.

HMA RESURFACING SHALL BE PLACED IN A SEQUENCE THAT WILL MINIMIZE THE TIME THE CENTERLINE EDGE IS EXPOSED TO TRAFFIC. WHEN AT THE END OF A DAY'S OPERATION THE EXPOSED CENTERLINE EDGE IS GREATER THAN 2,000 FT, THE CONTRACTOR SHALL BE REQUIRED TO PAVE IN THE ADJACENT LANE ON THE FOLLOWING WORK DAY. PRIOR TO WINTER SHUTDOWN, RESURFACING ON ADJACENT LANES IS TO BE BROUGHT UP TO THE SAME ELEVATION.

EDGE LINE PAVEMENT MARKING SHALL BE REMOVED IF A 10 FT LANE WIDTH CANNOT BE MAINTAINED. TEMPORARY EDGE LINES SHALL BE INSTALLED WHEN THE EDGE LINES ARE REMOVED.

COMMITMENTS

NONE

REV. - MS

MODEL: Default
 FILE: M:\GIS\Projects\DOT\Documents\DOT_Offices\District_9\Projects\78889\CADD\Sheet\0778889-Sheets.dgn

USER NAME = greenleesm	DESIGNED -	REVISED -	STATE OF ILLINOIS DEPARTMENT OF TRANSPORTATION	INDEX OF SHEETS, GENERAL NOTES, COMMITMENTS, STANDARDS	F.A.P. RTE.	SECTION	COUNTY	TOTAL SHEETS	SHEET NO.
DRAWN -	REVISED -	881			D9 RESURFACE 2022-1	JOHNSON	11	3	
PLOT SCALE = 100.0000' / in.	CHECKED -	REVISED +			CONTRACT NO. 78889				
PLOT DATE = 7/7/2021	DATE -	REVISED +			ILLINOIS FED. AID PROJECT				
				SCALE:	SHEET	OF	SHEETS	STA.	TO STA.

HMA MIXTURE REQUIREMENTS TABLES

Locations	Hot-Mix Asphalt Surface Course and Incidental HMA
Mixture Use(s):	Hot-Mix Asphalt Surface Course, Mix C, IL-9.5 N70
AC/PG:	PG64-22
ABR % (Max):	See Special Provision
Design Air Voids:	4.0 %, 70 Gyration Design
Mixture Composition: (Gradation Mixture)	IL-9.5mm
Friction Aggregate:	C Surface
Mixture Weight:	112 lbs/Sq Yd/in
Quality Management Program:	QCQA
Sublot Size:	NA

Location(s):	Hot_Mix Asphalt Binder
Mixture Use(s):	Hot-Mix Asphalt Binder Course, N70, IL-19.0
PG:	PG64-22
Design Air Voids:	4.0 %, 70 Gyration Design
Mixture Composition: (Mixture Gradation)	IL-19.0mm
Friction Aggregate:	None
Mixture Weight:	112 lbs/Sq Yd/in
Quality Management Program:	QCQA
Sublot Size:	NA
Number of Roller Passes	NA

Locations	Hot-Mix Asphalt Binder Course
Mixture Use(s):	Hot-Mix Asphalt Binder Course, N70, IL-9.5 Fine Graded
AC/PG:	PG64-22
ABR % (Max):	See Special Provision
Design Air Voids:	4.0 %, 70 Gyration Design
Mixture Composition: (Gradation Mixture)	IL-9.5FG
Friction Aggregate:	None
Mixture Weight:	112 lbs/Sq Yd/in
Quality Management Program:	QCQA
Sublot Size:	NA

MODEL: Default
 FILE: M:\MS_E_Plan\planroom.dwt
 ILLINOIS.gov\PI\DOT\Doc_merch\IBDT_Offices\Distric...
 Project: 78889\CADD\plan\CAD\Sheet\0778889-Sheets.dgn

USER NAME = greenleesm	DESIGNED -	REVISED -
	DRAWN -	REVISED -
PLOT SCALE = 100.0000' / in.	CHECKED -	REVISED -
PLOT DATE = 6/14/2021	DATE -	REVISED -

**STATE OF ILLINOIS
DEPARTMENT OF TRANSPORTATION**

MIX DESIGNS

SCALE: SHEET OF SHEETS STA. TO STA.

F.A.P. RTE.	SECTION	COUNTY	TOTAL SHEETS	SHEET NO.
881	D9 RESURFACE 2022-1	JOHNSON	11	4
CONTRACT NO. 78889				
ILLINOIS FED. AID PROJECT				

SUMMARY OF QUANTITIES

COUNTY:	JOHNSON CO
ROUTE:	FAP 881
FUNDING:	100% STATE
LOCATION:	RURAL
	ROADWAY
	0005

CODE NUMBER	ITEM DESCRIPTION	UNIT	TOTAL QUANTITY	
40600982	HOT-MIX ASPHALT SURFACE REMOVAL - BUTT JOINT	SQ YD	150	150
40600990	TEMPORARY RAMP	SQ YD	30	30
40602970	HOT-MIX ASPHALT BINDER COURSE, IL-9.5FG, N70	TON	112	112
40603085	HOT-MIX ASPHALT BINDER COURSE, IL-19.0, N70	TON	47	47
40604052	HOT-MIX ASPHALT SURFACE COURSE, IL-9.5, MIX "C", N70	TON	126	126
40700100	BITUMINOUS MATERIALS (TACK COAT)	POUND	1,067	1,067
40800050	INCIDENTAL HOT-MIX ASPHALT SURFACING	TON	4	4
44000155	HOT-MIX ASPHALT SURFACE REMOVAL, 1 1/2"	SQ YD	1,500	1,500
48102100	AGGREGATE WEDGE SHOULDER, TYPE B	TON	17	17
67100100	MOBILIZATION	L SUM	1	1
70100460	TRAFFIC CONTROL AND PROTECTION, STANDARD 701306	L SUM	1	1
70107025	CHANGEABLE MESSAGE SIGN	CAL DA	14	14
70300100	SHORT TERM PAVEMENT MARKING	FOOT	73	73
70300150	SHORT TERM PAVEMENT MARKING REMOVAL	SQ FT	24	24

MODEL: Default
 FILE: M:\GIS\Projects\78889\Documents\DOT_Offices\District_9\Project\78889\CADD\Sheet\0578889-Sheets.dgn

REV. - MS

USER NAME = greenleesm DRAWN = PLOT SCALE = 100.0000' / in. PLOT DATE = 6/14/2021	DESIGNED = DRAWN = CHECKED = DATE =	REVISED = REVISED = REVISED = REVISED =	STATE OF ILLINOIS DEPARTMENT OF TRANSPORTATION	SUMMARY OF QUANTITIES	SCALE:	SHEET 1 OF 2 SHEETS STA. TO STA.	<table border="1" style="width: 100%; border-collapse: collapse;"> <tr> <th style="font-size: x-x-small;">F.A.P. RTE.</th> <th style="font-size: x-x-small;">SECTION</th> <th style="font-size: x-x-small;">COUNTY</th> <th style="font-size: x-x-small;">TOTAL SHEETS</th> <th style="font-size: x-x-small;">SHEET NO.</th> </tr> <tr> <td style="text-align: center;">881</td> <td style="text-align: center;">D9 RESURFACE 2022-1</td> <td style="text-align: center;">JOHNSON</td> <td style="text-align: center;">11</td> <td style="text-align: center;">5</td> </tr> <tr> <td colspan="5" style="text-align: center; font-size: x-x-small;">CONTRACT NO. 78889</td> </tr> </table>	F.A.P. RTE.	SECTION	COUNTY	TOTAL SHEETS	SHEET NO.	881	D9 RESURFACE 2022-1	JOHNSON	11	5	CONTRACT NO. 78889				
F.A.P. RTE.	SECTION	COUNTY	TOTAL SHEETS	SHEET NO.																		
881	D9 RESURFACE 2022-1	JOHNSON	11	5																		
CONTRACT NO. 78889																						
ILLINOIS FED. AID PROJECT																						

SUMMARY OF QUANTITIES - CONT

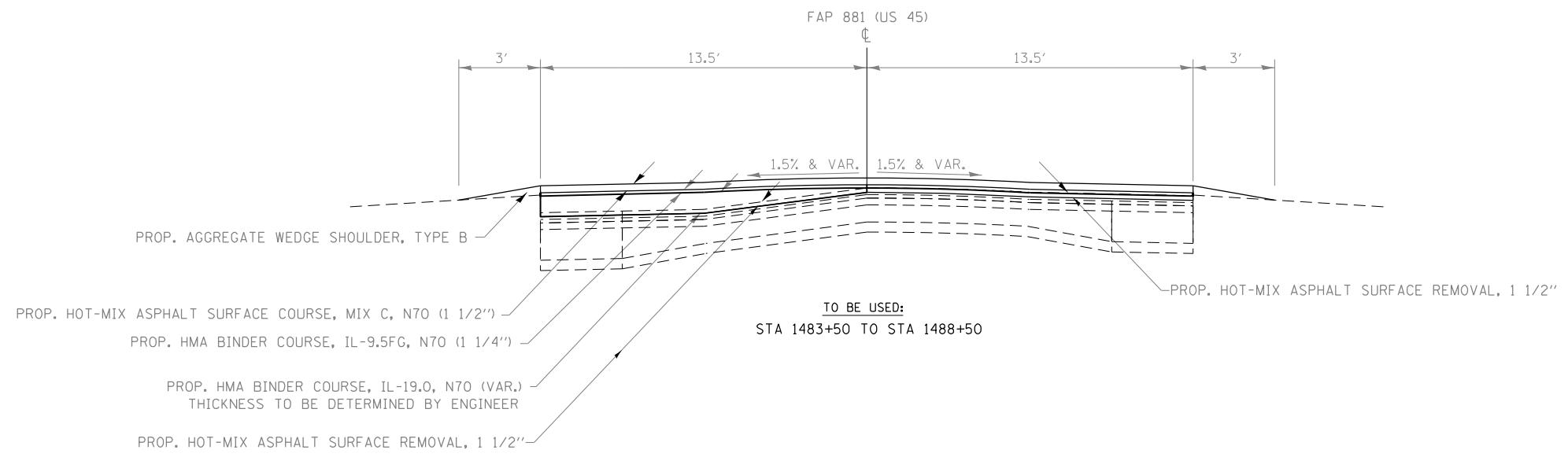
COUNTY:	JOHNSON CO
ROUTE:	FAP 881
FUNDING:	100% STATE
LOCATION:	RURAL
	ROADWAY
	0005

CODE NUMBER	ITEM DESCRIPTION	UNIT	TOTAL QUANTITY	
70300220	TEMPORARY PAVEMENT MARKING - LINE 4"	FOOT	1,725	1,725
* 78001110	PAINT PAVEMENT MARKING - LINE 4"	FOOT	1,725	1,725
78300200	RAISED REFLECTIVE PAVEMENT MARKER REMOVAL	EACH	5	5
X7030005	TEMPORARY PAVEMENT MARKING REMOVAL	SQ FT	575	575

* SPECIALTY ITEM

MODEL: Default
 FILE NAME: p:\data\room\dot\illinois\dot\pww\DOT\Documents\DOT_Offices\District 9\Project\78889\CAD\Drawings\DOT\78889-Sheets.dgn

USER NAME = greenleesm	DESIGNED -	REVISED -	STATE OF ILLINOIS DEPARTMENT OF TRANSPORTATION	SUMMARY OF QUANTITIES		F.A.P. RTE.	SECTION	COUNTY	TOTAL SHEETS	SHEET NO.
PLOT SCALE = 100,0000' / in.	DRAWN -	REVISED -				881	D9 RESURFACE 2022-1	JOHNSON	11	6
PLOT DATE = 6/14/2021	CHECKED -	REVISED -		SCALE: SHEET 2 OF 2 SHEETS STA. TO STA.		CONTRACT NO. 78889				
	DATE -	REVISED -		ILLINOIS FED. AID PROJECT						



MODEL: Typical
 FILE NAME: p:\pub\mroom.dwg
 PROJECT: 78889\CADD\Drawings\DOT - Office\Drawings\9\Project\78889\CADD\Drawings\DOT\78889-Design.dwg

USER NAME = greenleesm	DESIGNED -	REVISED -
	DRAWN -	REVISED -
PLOT SCALE = 200,0000' / in.	CHECKED -	REVISED -
PLOT DATE = 6/14/2021	DATE -	REVISED -

**STATE OF ILLINOIS
DEPARTMENT OF TRANSPORTATION**

TYPICAL SECTION	
SCALE:	SHEET OF SHEETS STA. TO STA.

F.A.P. RTE.	SECTION	COUNTY	TOTAL SHEETS	SHEET NO.
881	D9 RESURFACE 2022-1	JOHNSON	11	7
CONTRACT NO. 78889				
ILLINOIS FED. AID PROJECT				

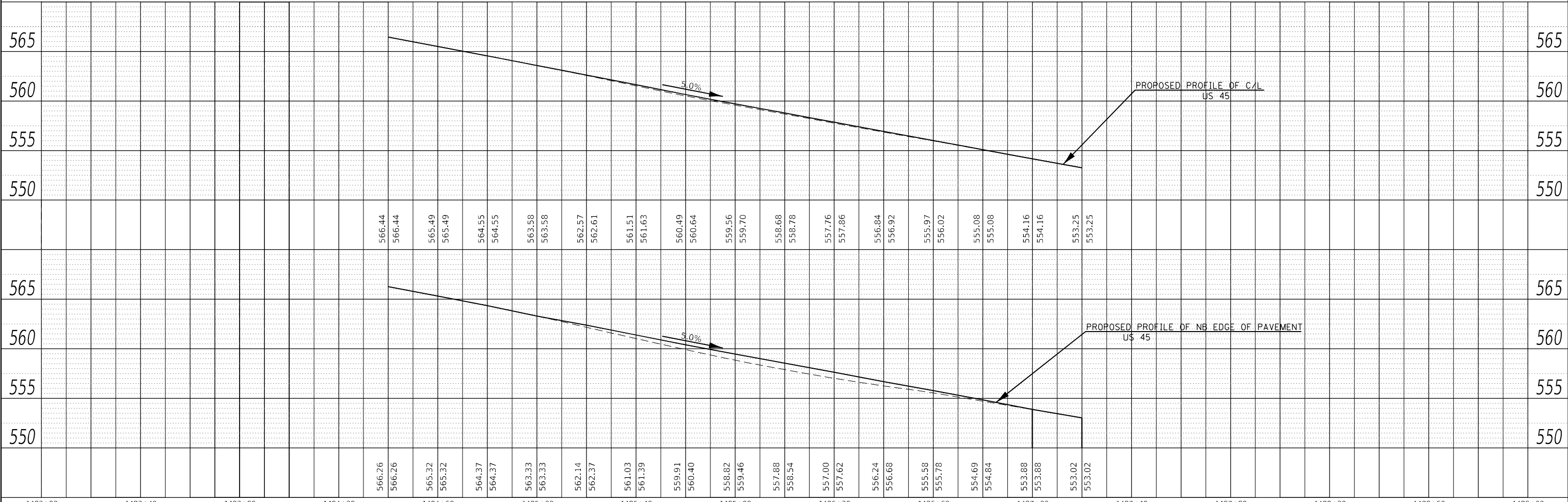
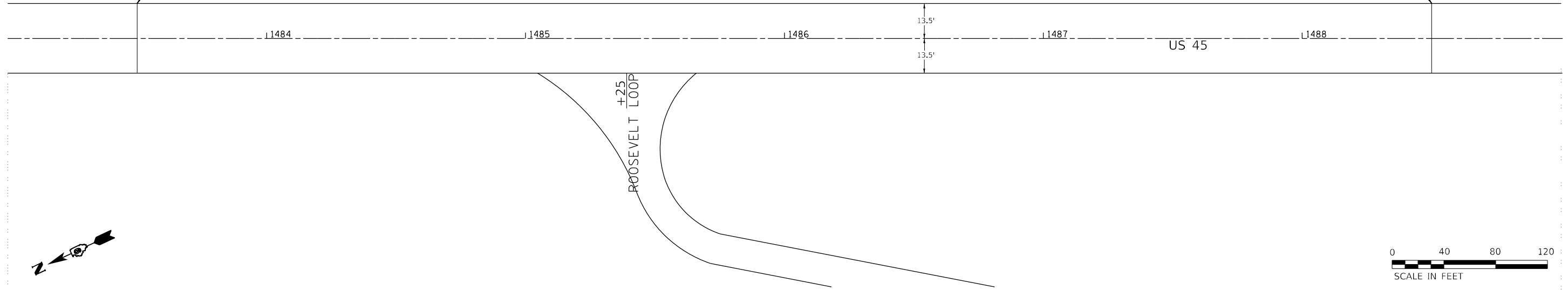
PLAN	SURVEYED	DATE
	PLOTTED	
	ALIGNED	
	CHECKED	
	BY	
	NO.	
	CADD FILE NAME	

PROFILE	SURVEYED	DATE
	PLOTTED	
	GRADES CHECKED	
	STRUCTURE NOTATIONS	
	NO.	
	CADD FILE NAME	

MODEL: Default
 FILE NAME: p:\data\mroon\illinois\pwr\pwr\DOT\Documents\DOT - Offices\Bentley - Projects\78889\CADD\Drawings\DWG\978889-Design.dwg

**PROJECT BEGINS
STA 1483 + 50**

**PROJECT ENDS
STA 1488 + 50**



USER NAME = greenleesm	DESIGNED -	REVISED -
	DRAWN -	REVISED -
PLOT SCALE = 40,0000 * / in.	CHECKED -	REVISED -
PLOT DATE = 6/14/2021	DATE -	REVISED -

**STATE OF ILLINOIS
DEPARTMENT OF TRANSPORTATION**

PLAN PROFILE SHEET

SCALE: SHEET OF SHEETS STA. TO STA.

F.A.P. RTE.	SECTION	COUNTY	TOTAL SHEETS	SHEET NO.
881	D9 RESURFACE 2022-1	JOHNSON	11	8
CONTRACT NO. 78889				
ILLINOIS		FED. AID PROJECT		

RESURFACING SCHEDULE

LOCATION STATION TO STATION	LENGTH	HMA SURFACE REMOVAL, 1 1/2"	HMA BINDER COURSE IL- 19.0, N70	HMA BINDER COURSE IL-9.5FG, N70	HMA SURFACE COURSE IL- 9.5 MIX C, N70	BITUMINOUS MATERIALS (TACK COAT)	TEMPORARY RAMP	AGGREGATE SHOULDERS TYPE B
	FOOT	SQ YD	TON	TON	TON	POUND	SQ YD	TON
US 45 (FAP 881)								
SOUTHBOUND								
STA. 1483+50 TO STA. 1485+00	150	225		15.8	18.9	151.9	7.5	1.8
STA. 1485+00 TO STA. 1487+00	200	300		21.0	25.2	202.5		2.4
STA. 1487+00 TO STA. 1488+50	150	225		15.8	18.9	151.9	7.5	1.8
NORTHBOUND								
STA. 1483+50 TO STA. 1485+00	150	225		15.8	18.9	151.9	7.5	1.8
STA. 1485+00 TO STA. 1485+60	60	90	20	9.3	7.6	60.8		3.4
STA. 1485+60 TO STA. 1486+40	80	120	27	11.4	10.1	135.0		3.0
STA. 1486+40 TO STA. 1488+50	210	315		22.1	26.5	212.6	7.5	2.5
SCHEDULE TOTAL		1500	47	112	126	1,067	30	17

PAVEMENT MARKING SCHEDULE

LOCATION	PAINT PAVEMENT - LINE 4"		TEMP PAVEMENT MARKING	TEMP PAVEMENT MARKING REMOVAL	SHORT TERM PAVEMENT MARKING	SHORT TERM PAVEMENT MARKING REMOVAL	RAISED PAVEMENT MARKER REMOVAL	NOTES
	OUTSIDE WHITE	INSIDE YELLOW	LINE 4"					
STA	FOOT	FOOT	FOOT	SQ FT	FOOT	SQ FT	EACH	
1483+50 TO 1487+20	740	465	1205	402	47	15	4	SKIP RT
1487+20 TO 1488+50	260	260	520	173	26	9	1	DBL YELLOW
TOTAL	1725		1725	575	73	24	5	

MODEL: Default
 FILE NAME: p:\pub\mroom.dwg
 PROJECT: 78889\CAD\Drawings\DOT - Office\Drawings\9\Projects\78889\CAD\Drawings\DOT\78889-Sheets.dgn

USER NAME = greenleesm	DESIGNED -	REVISED -
	DRAWN -	REVISED -
PLOT SCALE = 100,0000' / in.	CHECKED -	REVISED -
PLOT DATE = 6/14/2021	DATE -	REVISED -

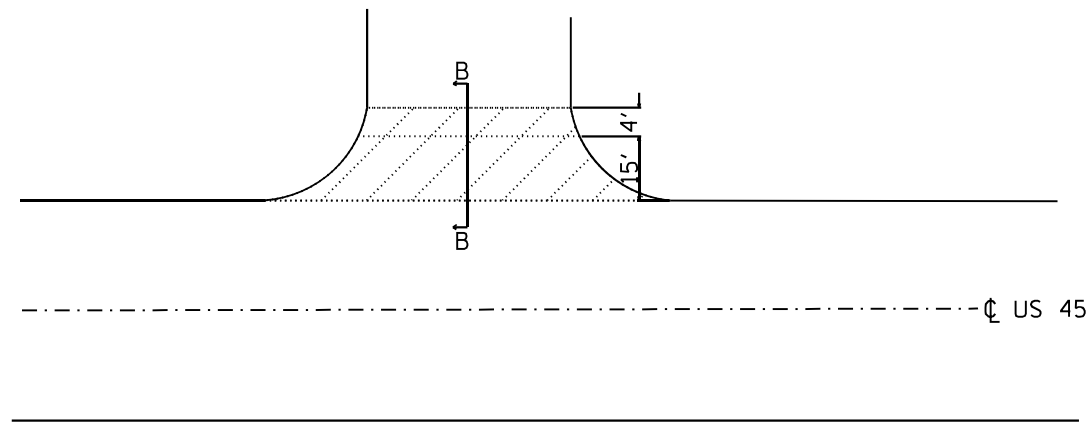
**STATE OF ILLINOIS
DEPARTMENT OF TRANSPORTATION**

SCHEDULES			
SCALE:	SHEET	OF	SHEETS
	STA.	TO	STA.

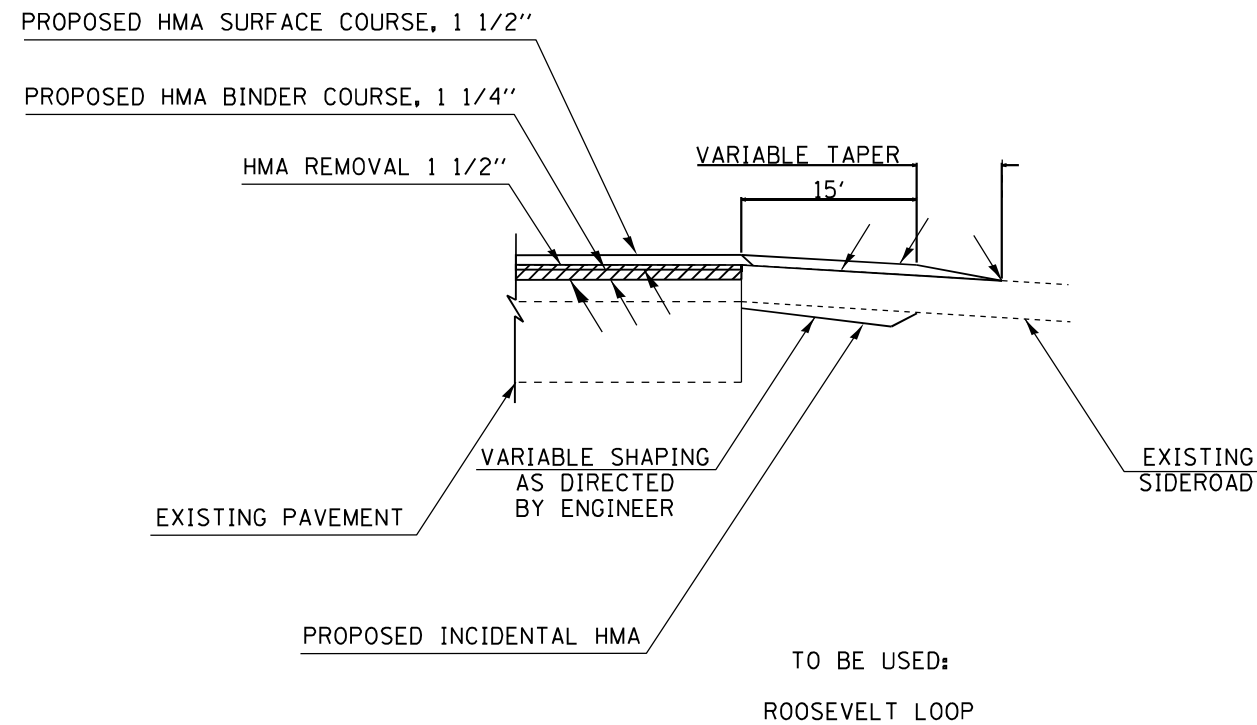
F.A.P. RTE.	SECTION	COUNTY	TOTAL SHEETS	SHEET NO.
881	D9 RESURFACE 2022-1	JOHNSON	11	9
CONTRACT NO. 78889				
ILLINOIS FED. AID PROJECT				

DETAIL OF OIL & CHIP SIDEROAD

NOT TO SCALE



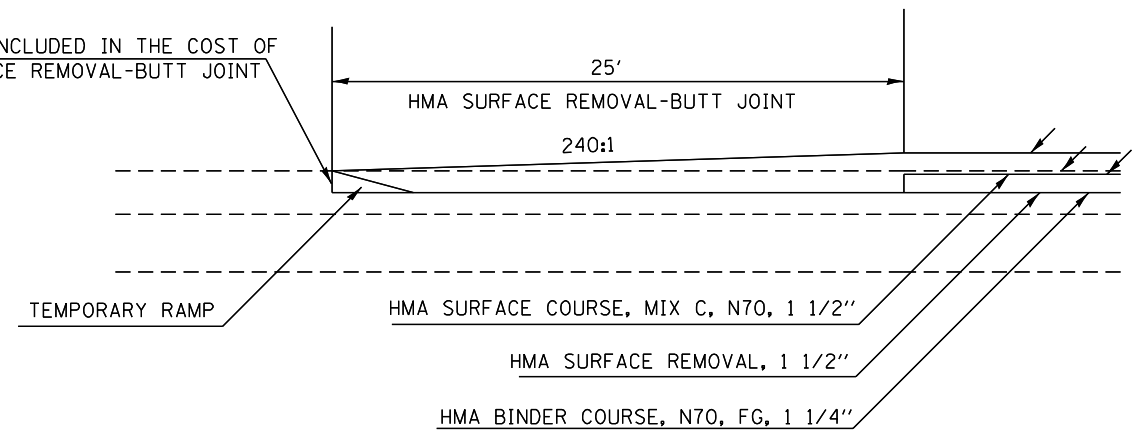
SECTION B-B



TO BE USED:
ROOSEVELT LOOP

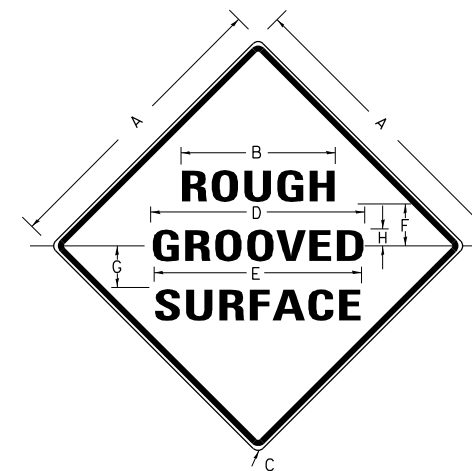
BUTT JOINT

SAW CUT (INCLUDED IN THE COST OF HMA SURFACE REMOVAL-BUTT JOINT)



TO BE USED:
STA. 1483+50
STA. 1488+50

ILLINOIS STANDARD



COLORS:

LEGEND AND BORDER- BLACK NON-REFLECTORIZED
BACKGROUND- ORANGE REFLECTORIZED

SIGN SIZE	DIMENSIONS							
	A	B	C	D	E	F	G	H
48X48	48.0	24.1	3.0	34.0	33.0	6.0	13.0	3.5

SIGN SIZE	SERIES LINES			MAR GIN	BOR DER	BLANK STD.
	1	2	3			
48X48	7C	7C	7C	0.8	1.2	B4-48D

ALL DIMENSIONS IN INCHES

NOTES:

PRIOR TO ALLOWING TRAFFIC ON ANY PORTION OF THE ROADWAY THAT HAS BEEN COLDMILLED, THE CONTRACTOR SHALL HAVE ERECTED "ROUGH GROOVED SURFACE" SIGNS THAT CONFORM TO THE ABOVE DETAILS. A MINIMUM OF ONE SIGN AT EACH END OF THE IMPROVEMENT WILL BE REQUIRED. THE CONTRACTOR SHALL MAINTAIN THE "ROUGH GROOVED SURFACE" SIGNS UNTIL THE COLDMILLED SURFACE IS COVERED WITH LEVELING BINDER OR SURFACE COURSE.

IF AT ANY TIME THE SIGNS ARE IN PLACE BUT NOT APPLICABLE, THEY SHALL BE TURNED FROM THE VIEW OF MOTORISTS OR COVERED AS DIRECTED BY THE ENGINEER.

THE COST OF FURNISHING, ERECTING, MAINTAINING, AND REMOVING THE REQUIRED SIGNS SHALL BE INCLUDED IN THE CONTRACT.

REVISIONS	
REDRAWN	2-15-89
REVISED	4-6-93
REVISED	3-27-08
REVIEWED	5-17-13

STD. 9-39

STATE OF ILLINOIS
DEPARTMENT OF TRANSPORTATION

DETAILS

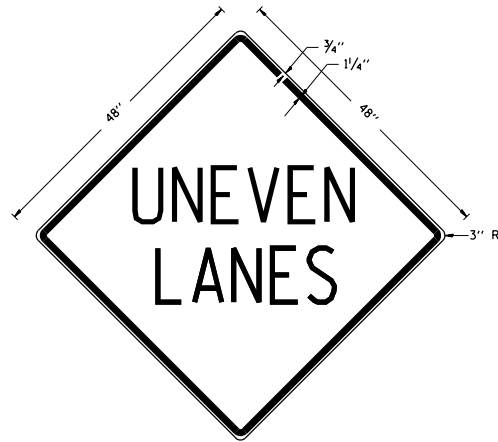
SCALE: SHEET OF SHEETS STA. TO STA.

F.A.P. RTE.	SECTION	COUNTY	TOTAL SHEETS	SHEET NO.
881	D9 RESURFACE 2022-1	JOHNSON	11	10
CONTRACT NO. 78889			ILLINOIS FED. AID PROJECT	

MODEL: Typical
FILE NAME: p:\mhammon.dwt\illinois\dot\Documents\DOT_Offices\Distric 9\Project\78889\CADD\Drawings\DOT_78889-Design.dwg

USER NAME = greenleesm	DESIGNED -	REVISED -
PLOT SCALE = 200,0000' / in.	DRAWN -	REVISED -
PLOT DATE = 6/14/2021	CHECKED -	REVISED -
	DATE -	REVISED -

UNEVEN LANES SIGN
W8-11 (48" x 48")



COLORS:
LEGEND AND BORDER - BLACK NON-REFLECTORIZED
BACKGROUND - ORANGE REFLECTORIZED

NOTE: PRIOR TO ALLOWING TRAFFIC ON ANY PORTION OF THE ROADWAY THAT HAS BEEN COLDMILLED OR BEFORE RESURFACING OPERATIONS BEGIN, THE CONTRACTOR SHALL HAVE ERECTED "UNEVEN PAVEMENT" SIGNS THAT CONFORM TO THE ABOVE DETAILS. A MINIMUM OF ONE SIGN AT EACH END OF THE IMPROVEMENT WILL BE REQUIRED. THE CONTRACTOR SHALL MAINTAIN THE "UNEVEN PAVEMENT" SIGNS UNTIL THE RESURFACING OPERATIONS ARE COMPLETED.

IF AT ANY TIME THE SIGNS ARE IN PLACE BUT NOT APPLICABLE, THEY SHALL BE TURNED FROM THE VIEW OF MOTORISTS OR COVERED AS DIRECTED BY THE ENGINEER.

THE COST OF FURNISHING, ERECTING, MAINTAINING, AND REMOVING THE REQUIRED SIGNS SHALL BE INCLUDED IN THE CONTRACT.

REVISIONS	
DRAWN	2-15-89
REVISED	4-06-93
REDESIGNED	7-23-04
RESIZED	5-08-08
REVIEWED	5-17-13

STD. 9-41

MODEL: Typical
FILE NAME: p:\planningroom\dot\illinois\dot\illinois\dot\pww\dot\Documents\DOT_Offices\District_9\Projects\78889\CADD\ata\Design\078889-Design.dwg

USER NAME = greenleesm	DESIGNED -	REVISED -
	DRAWN -	REVISED -
PLOT SCALE = 200,0000' / in.	CHECKED -	REVISED -
PLOT DATE = 6/14/2021	DATE -	REVISED -

**STATE OF ILLINOIS
DEPARTMENT OF TRANSPORTATION**

DETAILS

SCALE: SHEET OF SHEETS STA. TO STA.

F.A.P. RTE.	SECTION	COUNTY	TOTAL SHEETS	SHEET NO.
881	D9 RESURFACE 2022-1	JOHNSON	11	11
CONTRACT NO. 78889			ILLINOIS FED. AID PROJECT	