

STATE OF ILLINOIS
DEPARTMENT OF TRANSPORTATION

F.A.P. RTE.	SECTION	COUNTY	TOTAL SHEETS	SHEET NO.
845	112RS-5	FRANKLIN	31	1
ILLINOIS CONTRACT NO. 78898				

FOR INDEX OF SHEETS, SEE SHEET NO. 3
FOR SUMMARY OF QUANTITIES, SEE SHEET NO. 6-9

TRAFFIC DATA
2019 ADT

4150 WITH 10.4% TRUCKS (BEGINNING OF JOB TO MULBERRY ST.)
3150 WITH 16.5% TRUCKS (MULBERRY ST. TO SESSER LAKE RD.)
2950 WITH 14.9% TRUCKS (SESSER LAKE RD. TO 21 MILE RD./OLD BEN RD.)
3150 WITH 16.7% TRUCKS (21 MILE RD./OLD BEN RD. TO END OF JOB)

TOWNSHIPS
GOODE
BARREN

DESIGN DESIGNATION: N/A

COORDINATE SYSTEM: N/A

POSTED SPEEDS: 30 MPH (START OF JOB TO BEECH ST.)
40 MPH (BEECH ST. TO MAPLE ST.)
55 MPH (MAPLE ST. TO END OF JOB)

STRUCTURE OMISSIONS: SN: 028-0050
STA. 214 + 35 TO STA. 216 + 45

SN: 028-0051
STA. 274 + 95 TO STA. 279 + 35

RAILROAD OMISSIONS: STA. 20 + 03 = STA. 20 + 13
STA. 20 + 18 = STA. 20 + 28

STATION EQUATIONS: STA. 66 + 19.44 BK = STA. 66 + 33.36 AH
STA. 164 + 79.27 BK = STA. 164 + 99.59 AH

J.U.L.I.E.
JOINT UTILITY LOCATION INFORMATION FOR EXCAVATION
1-800-892-0123
OR 811

PROJECT ENGINEER: SUSAN POE
PROJECT DESIGNER: JARED HARP

CONTRACT NO. 78898

**PROPOSED
HIGHWAY PLANS**

FAP ROUTE 845 (IL 154)
SECTION 112RS-5
PROJECT STP-HSIP-U7BC(142)
PATCHING, RESURFACING,
GUARDRAIL REMOVAL AND REPLACEMENT,
AND SAFETY SHOULDERS
FRANKLIN COUNTY

RAILROAD OMISSIONS
STA. 20 + 03 TO STA. 20 + 13
STA. 20 + 18 TO STA. 20 + 28

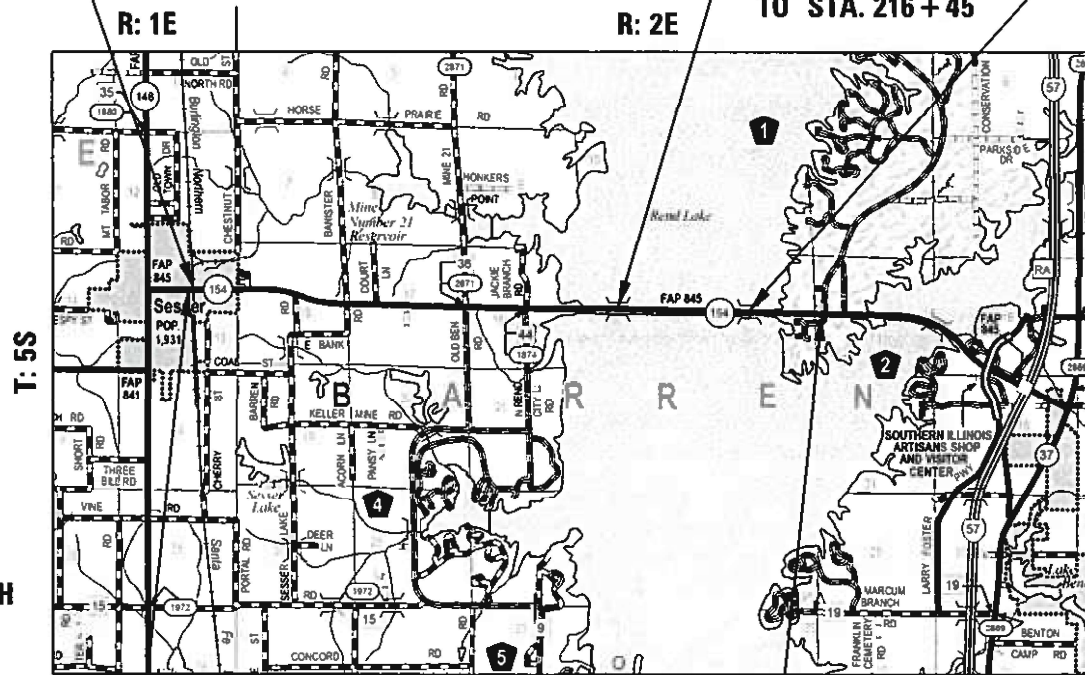
C-99-098-21

SN: 028-0050

SN: 028-0051

OMIT STA. 214 + 35
TO STA. 216 + 45

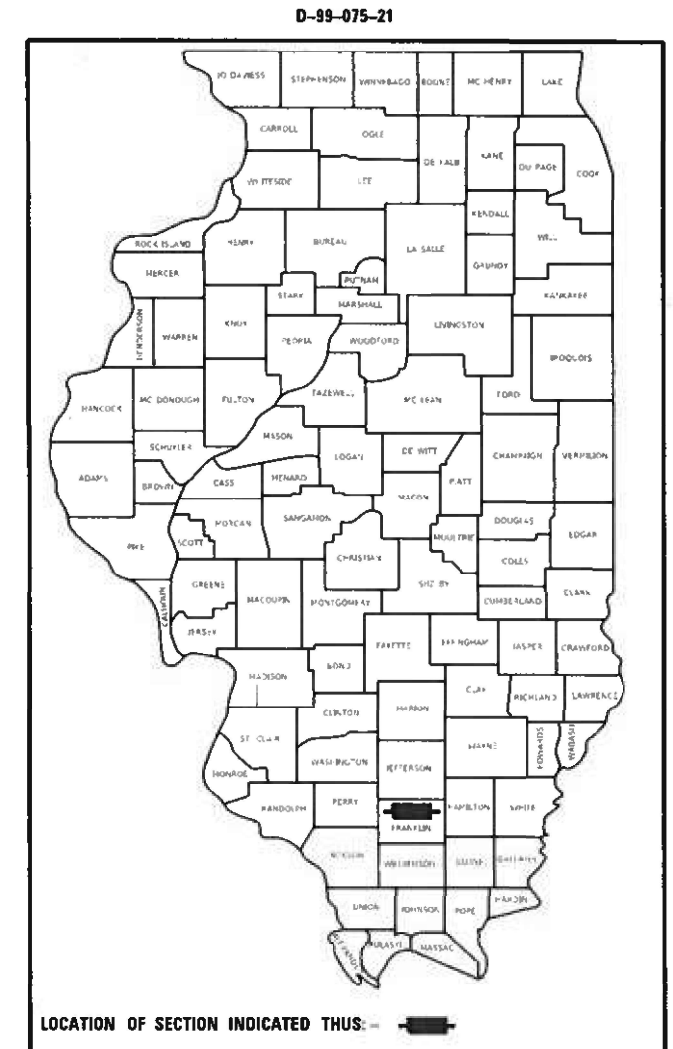
OMIT STA. 274 + 95
TO STA. 279 + 35



PROP. IMPROVEMENT BEGINS
STA. 19 + 83 FAP 845 (IL 154)
BUTT JOINT WEST OF
RAILROAD TRACKS

PROP. IMPROVEMENT ENDS
STA. 307 + 05 FAP 845 (IL 154)
BUTT JOINT WEST SIDE OF
FITZGERRELL PARK DR.

GROSS LENGTH = 28687.76 FEET = 5.433 MILES
NET LENGTH = 28037.76 FEET = 5.310 MILES



STATE OF ILLINOIS
DEPARTMENT OF TRANSPORTATION

SUBMITTED June 25 2021
Keith Robertson
REGION FIVE ENGINEER

August 13, 2021
[Signature]
ENGINEER OF DESIGN AND ENVIRONMENT

August 13, 2021
[Signature]
DIRECTOR OF HIGHWAYS PROJECT IMPLEMENTATION

**PRINTED BY THE AUTHORITY
OF THE STATE OF ILLINOIS**

MDDPI_A_105Scale Cover Signature Index Standard GeneralNotes MTD Materials SOO
 FILE NAME: \\p11amcom\del-illinois\p11am\DOT\Documents\DOT - Office\3D\plotted\91811\15118898\CAD\Sheet\02178898.Cover_Signature_Index_Sig_Generates_MTD_Materials_SOO.dwg

Prepared By: Charles Stein
 DISTRICT STUDIES & PLANS ENGINEER

Examined By: Nancy Lee
 DISTRICT LAND ACQUISITION ENGINEER

Examined By: Carrie Nelson
 DISTRICT PROGRAM DEVELOPMENT ENGINEER

Examined By: _____
 DISTRICT OPERATIONS ENGINEER

Examined By: Keith Roberts
 DISTRICT PROJECT IMPLEMENTATION ENGINEER

Examined By: Daryl J. Melnick
 DISTRICT CONSTRUCTION ENGINEER

Examined By: Tom Cooney
 DISTRICT MATERIALS ENGINEER

USER NAME = white	DESIGNED -	REVISED -
PLOT SCALE = 100 0000' / 1" =	DRAWN -	REVISED -
PLOT DATE = 6/25/2021	CHECKED -	REVISED -
	DATE -	REVISED -

STATE OF ILLINOIS
DEPARTMENT OF TRANSPORTATION

SIGNATURE SHEET

SCALE:	SHEET	OF	SHEETS	STA.	TO STA.	F.A.P. RTE.	SECTION	COUNTY	TOTAL SHEETS	SHEET NO.
						845	112RS-5	FRANKLIN	31	2
						ILLINOIS FED. AID PROJECT				
						CONTRACT NO. 78898				

INDEX OF SHEETS

SHEET NO	DESCRIPTION
1	COVER SHEET
2	SIGNATURE SHEET
3	INDEX OF SHEETS AND LIST OF STANDARDS
4	GENERAL NOTES AND MTD CROSSING RESTRICTIONS TABLE
5	MIXTURE REQUIREMENTS
6-9	SUMMARY OF QUANTITIES
10-11	TYPICAL SECTIONS
12-22	SCHEDULES OF QUANTITIES
23	DETAILS: PARAPET DETAIL (SN 028-0050)
24	DETAILS: WINGWALL DETAIL (SN 028-0050)
25	DETAILS: PARAPET AND WINGWALL DETAIL (SN 028-0051)
26	DETAILS: MAINLINE BUTT JOINT DETAIL SHOULDER BUTT JOINT DETAIL
27	DETAILS: MAINLINE SURFACE REMOVAL TRANSITION DETAIL
28	DETAILS: SIDEROAD DETAIL
29	DETAILS: COMMERCIAL, PRIVATE, AND FIELD ENTRANCES DETAIL
30	DETAILS: SHORT TERM PAVEMENT MARKING, UNEVEN LANES SIGN, TEMPORARY RAMP AT SIDEROADS, ROUGH GROOVED SURFACE SIGN
31	DETAILS: TEMPORARY HOT-MIX ASPHALT TRANSITIONS

HIGHWAY STANDARDS

- 000001-08_STANDARDSYMBOLSABBREVIATIONS&PATTERNS-001
- 001001-02_AREASOFREINFREBARS
- 001006_DECIMALOFINCH&FOOT
- 442201-03_CLASSC&DPATCHES
- 630001-12_STEELPLATEBEAMGRDRAIL
- 630301-09_SHLDWIDENFORTYPE1GRDRAILTERMS
- 631033-08_TRAFBARTERMTYPE6B
- 635001-02_DELINEATORS
- 642006-01_SHOULDERRUMBLESTRIP8IN-240
- 701001-02_OFFRDOP-2L2W-15FTMINFROMEOP
- 701006-05_OFFRDOP-2L2W-15FTTOEOP
- 701011-04_OFFRDMOVINGOP-2L2W-DAYONLY
- 701301-04_LNCLOSURE2L2W-SHORTTIMEOP
- 701306-04_LNCLOSURE2L2W-SLOWMOVEOPDAYONLY45MPHORMORE
- 701311-03_LNCLOSURE2L2W-MOVINGOPDAYONLY
- 701326-04_LNCLOSURE2L2W-PVMTWIDENING45MPHORMORE
- 701336-07_LNCLOSURE2L2W-WORKAREASINSERIES45MPHORMORE
- 701501-06_URBANLNCLOSURE2L2W-UNDIVIDED
- 701901-08_TRAFCNTRLDEVICES
- 725001-01_OBJECTANDTERMINALMARKERS
- 780001-05_TYPICALPVMTMRKINGS
- 781001-04_TYPICALAPPRAISEDREFLCPVMTMRKRS
- 782006-01_GUARDRAILANDBARRIERWALLREFLECTORMOUNTINGDEATI

MODEL: A:\05Scale_Cover_Signature_Index_Standards_GeneralNotes_MTD_Mixtures_SOP
 FILE NAME: P:\Informational\Public\DOT Documents\DOT_Misc\DOT\DOT_Standards\Index_Signature_Index_Sld_GenNotes_MTD_Mixtures_SOP.dgn

USER NAME = whitode	DESIGNED -	REVISED -
	DRAWN -	REVISED -
PLOT SCALE = 100.0000 ' / in.	CHECKED -	REVISED -
PLOT DATE = 6/28/2021	DATE -	REVISED -

**STATE OF ILLINOIS
DEPARTMENT OF TRANSPORTATION**

INDEX OF SHEETS AND LIST OF STANDARDS

SCALE: SHEET OF SHEETS STA. TO STA.

F.A.P. RTE.	SECTION	COUNTY	TOTAL SHEETS	SHEET NO.
845	112RS-5	FRANKLIN	31	3
CONTRACT NO. 78898				
ILLINOIS FED. AID PROJECT				

SUMMARY OF QUANTITIES - CONT

COUNTY:	FRANKLIN	FRANKLIN
ROUTE:	FAP 845 (IL 154)	FAP 845 (IL 154)
FUNDING:	80% FEDERAL / 20% STATE	90% FEDERAL / 10% STATE
LOCATION:	RURAL	RURAL
	ROADWAY	SAFETY
	0005	0021

CODE NUMBER	ITEM DESCRIPTION	UNIT	TOTAL QUANTITY		
44201385	CLASS C PATCHES, TYPE I, 13 INCH	SQ YD	3	3	
44201389	CLASS C PATCHES, TYPE II, 13 INCH	SQ YD	941	941	
44201394	CLASS C PATCHES, TYPE III, 13 INCH	SQ YD	179	179	
44201396	CLASS C PATCHES, TYPE IV, 13 INCH	SQ YD	418	418	
44300200	STRIP REFLECTIVE CRACK CONTROL TREATMENT	FOOT	32,074	32,074	
48102100	AGGREGATE WEDGE SHOULDER, TYPE B	TON	668	668	
48203029	HOT-MIX ASPHALT SHOULDERS, 8"	SQ YD	23,946		23,946
48203100	HOT-MIX ASPHALT SHOULDERS	TON	1,193	1,193	
50104000	BRIDGE RAIL REMOVAL	FOOT	197		197
50300255	CONCRETE SUPERSTRUCTURE	CU YD	6.0		6.0
50800205	REINFORCEMENT BARS, EPOXY COATED	POUND	1,440		1,440
* 63000003	STEEL PLATE BEAM GUARDRAIL, TYPE A, 9 FOOT POSTS	FOOT	17,166		17,166
* 63100089	TRAFFIC BARRIER TERMINAL, TYPE 6B	EACH	8		8
* 63100167	TRAFFIC BARRIER TERMINAL, TYPE 1 (SPECIAL) TANGENT	EACH	4		4

* SPECIALTY ITEM

MODEL: A:\05Scale_Cover_Signature_Index_Spreadsheets_GeneralNotes_MTD_Mixtures_SOP
FILE NAME: P:\1151180090\1151180090_PUBLIC\DOT Documents\DOT_Mileage\DOT_Mileage\Mixtures_MTD_Mixtures_SOP.dgn

USER NAME = white	DESIGNED -	REVISED -
PLOT SCALE = 100.0000' / in.	DRAWN -	REVISED -
PLOT DATE = 6/28/2021	CHECKED -	REVISED -
	DATE -	REVISED -

**STATE OF ILLINOIS
DEPARTMENT OF TRANSPORTATION**

SUMMARY OF QUANTITIES

SCALE: SHEET OF SHEETS STA. TO STA.

F.A.P. RTE. 845	SECTION 112RS-5	COUNTY FRANKLIN	TOTAL SHEETS 31	SHEET NO. 7
CONTRACT NO. 78898				
ILLINOIS FED. AID PROJECT				

SUMMARY OF QUANTITIES - CONT

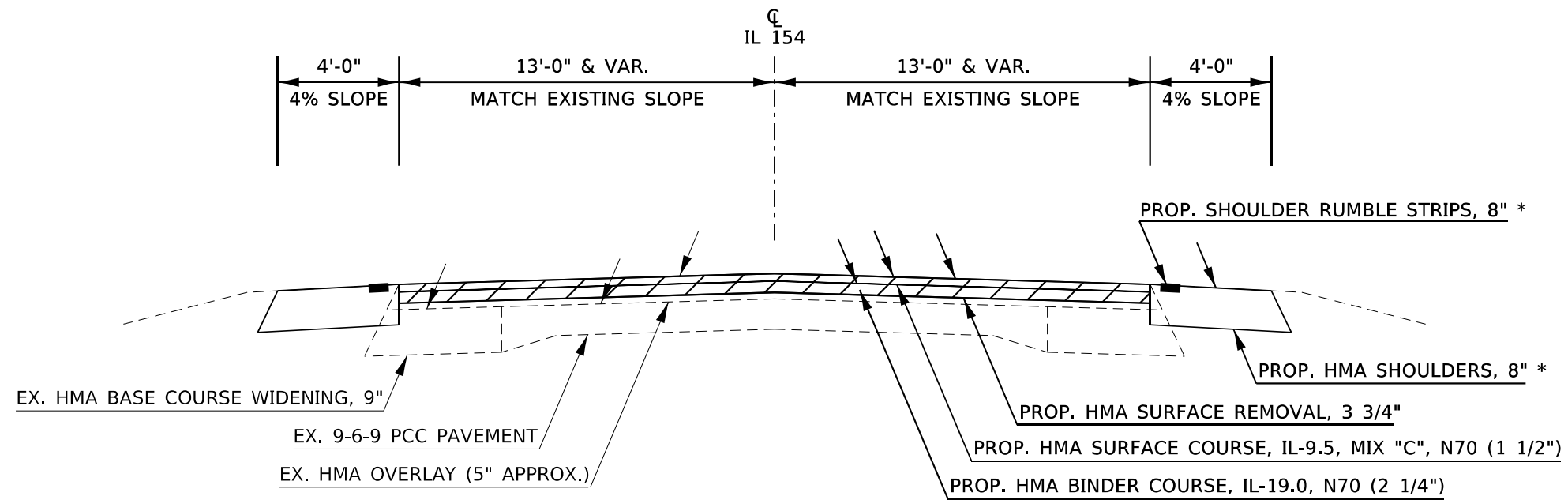
COUNTY:	FRANKLIN	FRANKLIN
ROUTE:	FAP 845 (IL 154)	FAP 845 (IL 154)
FUNDING:	80% FEDERAL / 20% STATE	90% FEDERAL / 10% STATE
LOCATION:	RURAL	RURAL
	ROADWAY	SAFETY
	0005	0021

CODE NUMBER	ITEM DESCRIPTION	UNIT	TOTAL QUANTITY		
63200310	GUARDRAIL REMOVAL	FOOT	17,766		17,766
64200108	SHOULDER RUMBLE STRIPS, 8 INCH	FOOT	55,974		55,974
67000400	ENGINEER'S FIELD OFFICE, TYPE A	CAL MO	7	7	
67100100	MOBILIZATION	L SUM	1	0.5	0.5
70100460	TRAFFIC CONTROL AND PROTECTION, STANDARD 701306	L SUM	1	1	
70100500	TRAFFIC CONTROL AND PROTECTION, STANDARD 701326	L SUM	1		1
70100600	TRAFFIC CONTROL AND PROTECTION, STANDARD 701336	L SUM	1	1	
70102620	TRAFFIC CONTROL AND PROTECTION, STANDARD 701501	L SUM	1	1	
70103815	TRAFFIC CONTROL SURVEILLANCE	CAL DA	18		18
70107025	CHANGEABLE MESSAGE SIGN	CAL DA	28	28	
70300100	SHORT TERM PAVEMENT MARKING	FOOT	11,629	9,287	2,342
70300150	SHORT TERM PAVEMENT MARKING REMOVAL	SQ FT	3,876	3,095	781
70300210	TEMPORARY PAVEMENT MARKING LETTERS AND SYMBOLS	SQ FT	61.2	61.2	
70300220	TEMPORARY PAVEMENT MARKING - LINE 4"	FOOT	70,711	70,711	

MODEL_A_01Scale_Cover_Signature_Index_Symbols: GeneralNotes_MTD_Miscures_SQP
FILE_NAME: P:\Informational\Public\DOT\Documents\DOT_Misc\DOT\DOT_01Scale_Cover_Signature_Index_Symbols_MTD_Miscures_SQP.dgn

REV. - MS

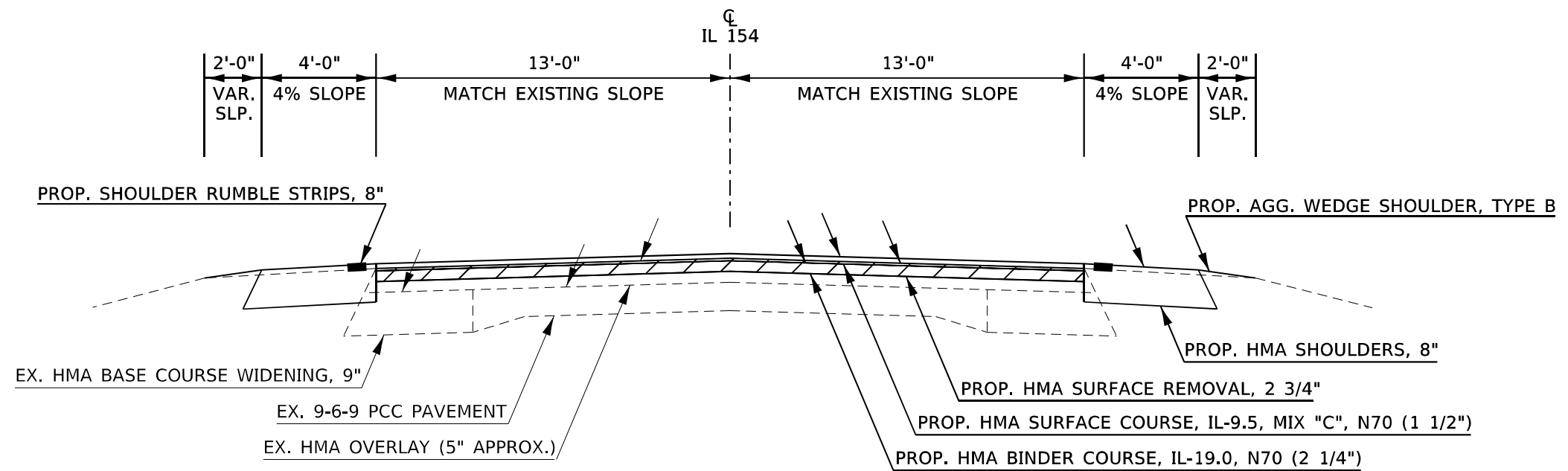
USER NAME = whitode	DESIGNED -	REVISED -	STATE OF ILLINOIS DEPARTMENT OF TRANSPORTATION	SUMMARY OF QUANTITIES			F.A.P. RTE.	SECTION	COUNTY	TOTAL SHEETS	SHEET NO.	
PLOT SCALE = 100.0000' / in.	DRAWN -	REVISED -					845	112RS-5	FRANKLIN	31	8	
PLOT DATE = 6/28/2021	CHECKED -	REVISED -		SCALE:	SHEET	OF	SHEETS	STA.	TO	STA.	CONTRACT NO. 78898	
	DATE -	REVISED -									ILLINOIS FED. AID PROJECT	



RAILROAD OMISSION: STA 20+03 TO STA 20+13
STA 20+18 TO STA 20+28

TO BE USED:
STA 19+83 TO STA 20+55

* STARTS AT STA 20+33 LT & RT



STATION EQUATIONS: 66+19.44 BK = 66+33.36 AH
164+79.27 BK = 164+99.59 AH

TO BE USED:
STA 20+55 TO STA 180+75

MODEL: A_5_Scale_Typical.dwg
FILE NAME: P:\Information\GIS\Illinois\DOT\Documents\DOT Office\District 9\Project\78898\CADD\Drawings\DOT 78898-Typical.dwg

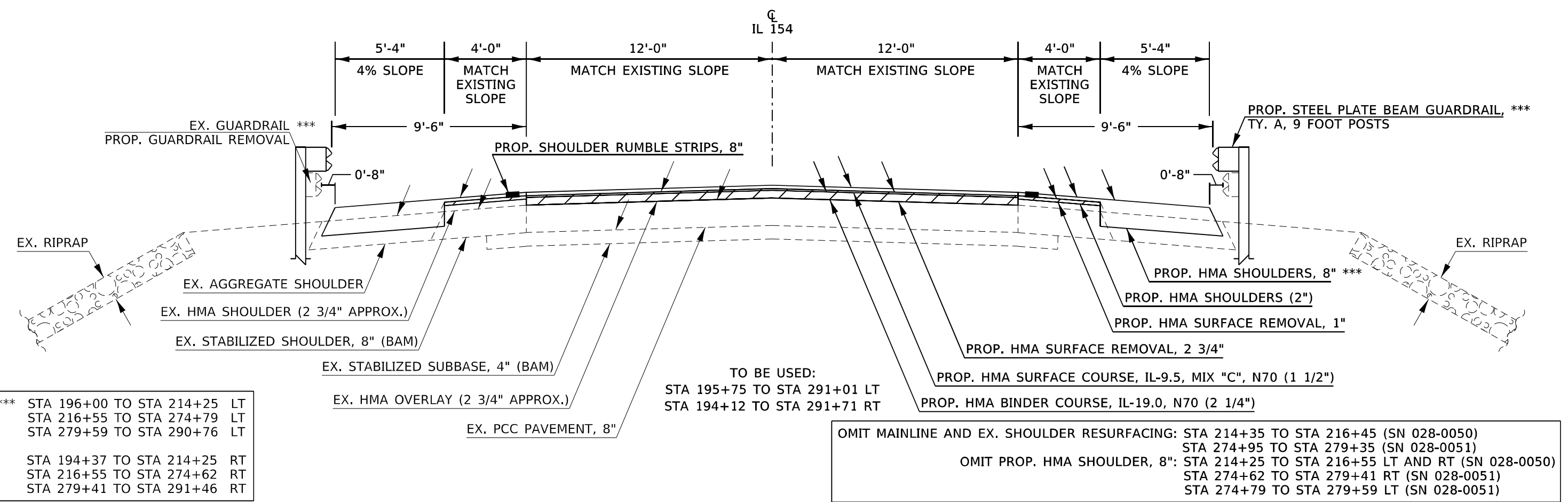
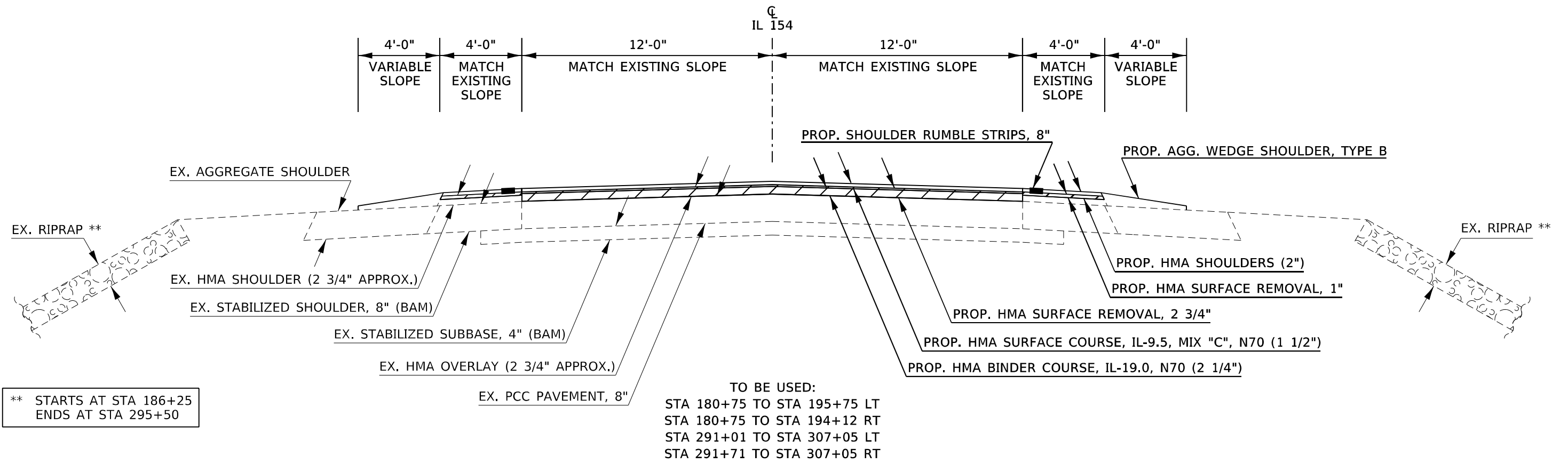
USER NAME = whitode	DESIGNED -	REVISED -
	DRAWN -	REVISED -
PLOT SCALE = 10.0000' / in.	CHECKED -	REVISED -
PLOT DATE = 6/28/2021	DATE -	REVISED -

STATE OF ILLINOIS
DEPARTMENT OF TRANSPORTATION

TYPICAL SECTIONS

SCALE: SHEET OF SHEETS STA. TO STA.

F.A.P. RTE.	SECTION	COUNTY	TOTAL SHEETS	SHEET NO.
845	112RS-5	FRANKLIN	31	10
			CONTRACT NO. 78898	
		ILLINOIS	FED. AID PROJECT	



MODEL: A_5_Scale_Typical.dwg
 FILE NAME: P:\Information\GIS\MapInfo\Projects\DOT\Documents\DOT\Office\District 9\Project\178898\CADD\Drawings\DOT\78898-Typical.dwg

USER NAME = whitode	DESIGNED -	REVISED -	STATE OF ILLINOIS DEPARTMENT OF TRANSPORTATION	TYPICAL SECTIONS		F.A.P. RTE. = 845	SECTION = 112RS-5	COUNTY = FRANKLIN	TOTAL SHEETS = 31	SHEET NO. = 11
PLOT SCALE = 10.0000' / in.	DRAWN -	REVISED -		SCALE:	SHEET OF SHEETS	STA. TO STA.	CONTRACT NO. 78898			
PLOT DATE = 6/28/2021	CHECKED -	REVISED -					ILLINOIS FED. AID PROJECT			
	DATE -	REVISED -								

MAINLINE RESURFACING SCHEDULE (1 OF 1)

LOCATION STATION TO STATION			PAVEMENT WIDTH	PAVEMENT LENGTH	HOT-MIX ASPHALT REMOVAL, 2 3/4"	HOT-MIX ASPHALT REMOVAL, 3 3/4"	HOT-MIX ASPHALT BINDER COURSE, IL-19.0, N70	HOT-MIX ASPHALT SURFACE COURSE, IL-9.5, MIX "C", N70	BITUMINOUS MATERIAL (TACK COAT)	LONGITUDINAL JOINT SEALANT	HOT-MIX ASPHALT SURFACE REMOVAL- BUTT JOINT	STRIP REFLECTIVE CRACK CONTROL	TEMPORARY RAMP	COMMENTS
IL 154			FOOT	FOOT	SQ YD	SQ YD	TON	TON	POUND	FOOT	SQ YD	FOOT	SQ YD	
START	TO	END												
19+83													51	TEMPORARY RAMP AT START OF JOB
19+83	TO	20+03	33	20		73	9	6	50	20		40		START OF JOB BUTT JOINT
20+03													51	TEMPORARY RAMP AT RAILROAD TRACK
20+03	TO	20+13												RAILROAD TRACK OMISSION
20+13	TO	20+18	33	5		18	2	2	12	5		10	29	AREA BETWEEN RAILROAD TRACKS
20+18	TO	20+28												RAILROAD TRACK OMISSION
20+28													51	TEMPORARY RAMP AT RAILROAD TRACK
20+28	TO	20+33	33	5		18	2	2	12	5		10		
20+33	TO	20+55	26	22		64	8	5	43	22		44		
20+55	TO	20+95	26	40	116		15	10	78	40		80		TRANSITION FROM INLAY TO GRADE RAISE
20+95	TO	66+19.44	26	4524	13069		1647	1103	8822	4524		9048		
66+19.44 BK	=	66+33.36 AH												STATION EQUATION
66+33.36	TO	164+79.27	26	9846	28444		3584	2401	19200	9846		19692		
164+79.27 BK	=	164+99.59 AH												STATION EQUATION
164+99.59	TO	180+75	26	1575	4550		573	384	3071	1575		3150		
180+75	TO	213+95	24	3320	8853		1116	748	5976	3320				
213+95	TO	214+35	24	40			13	9	72	40	107			BUTT JOINT W. OF SN 028-0050
214+35													47	TEMPORARY RAMP AT W. END OF SN 028-0050
214+35	TO	216+45												STRUCTURE OMISSION (SN 028-0050)
216+45													47	TEMPORARY RAMP AT E. END OF SN 028-0050
216+45	TO	216+85	24	40			13	9	72	40	107			BUTT JOINT E. OF SN 028-0050
216+85	TO	274+55	24	5770	15387		1939	1299	10386	5770				
274+55	TO	274+95	24	40			13	9	72	40	107			BUTT JOINT W. OF SN 028-0051
274+95													47	TEMPORARY RAMP AT W. END OF SN 028-0051
274+95	TO	279+35												STRUCTURE OMISSION (SN 028-0051)
279+35													47	TEMPORARY RAMP AT E. END OF SN 028-0051
279+35	TO	279+75	24	40			13	9	72	40	107			BUTT JOINT E. OF SN 028-0051
279+75	TO	306+65	24	2690	7173		904	606	4842	2690				
306+65	TO	307+05	24	40			13	9	72	40	107			END OF JOB BUTT JOINT
307+05													47	TEMPORARY RAMP AT END OF JOB
TOTALS					77592	173	9864	6611	52852	28017	535	32074	417	

MODEL: A:\0_S\1_Schedule.dwg
 FILE NAME: P:\Information\Illinois\DOT\Documents\DOT\Office\District 9\Projects\78898\CADD\Sheet\DOT\78898-Schedule.dwg

USER NAME = whitode	DESIGNED -	REVISED -
PLOT SCALE = 100.0000' / in.	DRAWN -	REVISED -
PLOT DATE = 6/28/2021	CHECKED -	REVISED -
	DATE -	REVISED -

STATE OF ILLINOIS
DEPARTMENT OF TRANSPORTATION

SCHEDULES (MAINLINE RESURFACING)			
SCALE:	SHEET	OF	SHEETS
	STA.	TO	STA.

F.A.P. RTE.	SECTION	COUNTY	TOTAL SHEETS	SHEET NO.
845	112RS-5	FRANKLIN	31	12
CONTRACT NO. 78898				
ILLINOIS FED. AID PROJECT				

SHOULDER SCHEDULE (1 OF 2)

LOCATION STATION TO STATION				SHOULDER LENGTH	PROP. SHOULDER WIDTH	EX. SHOULDER WIDTH	HOT-MIX ASPHALT SURFACE REMOVAL - BUTT JOINT	HOT-MIX ASPHALT SURFACE REMOVAL, 1"	EXCAVATING AND GRADING EXISTING SHOULDER	HOT-MIX ASPHALT SHOULDERS	HOT-MIX ASPHALT SHOULDERS, 8"	BITUMINOUS MATERIALS (TACK COAT)	AGGREGATE WEDGE SHOULDER, TYPE B	COMMENTS
IL 154				FOOT	FOOT	FOOT	SQ YD	SQ YD	UNIT	TON	SQ YD	POUND	TON	
START	TO	END	O/S											
20+33.0	TO	21+48.5	LT	115.5	4.00	0			1.2		51	23	1.8	START 4' WIDE PROP. HMA SHOULDER, 8" JUST EAST OF RR IN SESSER
20+33.0	TO	21+56.0	RT	123.0	4.00	0			1.2		55	25	1.9	START 4' WIDE PROP. HMA SHOULDER, 8" JUST EAST OF RR IN SESSER
21+96.0	TO	23+50.5	RT	154.5	4.00	0			1.5		69	31	2.4	
22+03.5	TO	23+48.0	LT	144.5	4.00	0			1.4		64	29	2.3	
23+97.5	TO	26+95.5	RT	298.0	4.00	0			3.0		132	60	4.7	
24+00.0	TO	27+02.0	LT	302.0	4.00	0			3.0		134	60	4.8	
27+46.0	TO	30+47.0	LT	301.0	4.00	0			3.0		134	60	4.8	
27+52.5	TO	30+46.5	RT	294.0	4.00	0			2.9		131	59	4.7	
30+97.0	TO	32+66.5	LT	169.5	4.00	0			1.7		75	34	2.7	
30+97.5	TO	33+95.5	RT	298.0	4.00	0			3.0		132	60	4.7	
33+05.5	TO	33+94.0	LT	88.5	4.00	0			0.9		39	18	1.4	
34+44.5	TO	37+45.0	RT	300.5	4.00	0			3.0		134	60	4.8	
34+46.0	TO	37+47.5	LT	301.5	4.00	0			3.0		134	60	4.8	
37+96.5	TO	40+43.0	LT	246.5	4.00	0			2.5		110	49	3.9	
37+99.0	TO	40+44.0	RT	245.0	4.00	0			2.5		109	49	3.9	
40+98.0	TO	46+67.0	RT	569.0	4.00	0			5.7		253	114	9.0	
40+99.0	TO	44+84.0	LT	385.0	4.00	0			3.9		171	77	6.1	
45+32.0	TO	66+19.44	LT	2087.4	4.00	0			20.9		928	417	33.0	STA EQ: 66+19.44 BK = 66+33.36 AH
47+31.0	TO	48+42.5	RT	111.5	4.00	0			1.1		50	22	1.8	
49+07.5	TO	66+19.44	RT	1711.9	4.00	0			17.1		761	342	27.1	STA EQ: 66+19.44 BK = 66+33.36 AH
66+33.36	TO	66+57.5	RT	24.1	4.00	0			0.2		11	5	0.4	STA EQ: 66+19.44 BK = 66+33.36 AH
66+33.36	TO	91+19.5	LT	2486.1	4.00	0			24.9		1105	497	39.3	STA EQ: 66+19.44 BK = 66+33.36 AH
67+58.5	TO	87+41.5	RT	1983.0	4.00	0			19.8		881	397	31.4	
88+02.5	TO	88+91.5	RT	89.0	4.00	0			0.9		40	18	1.4	
89+50.5	TO	91+15.0	RT	164.5	4.00	0			1.6		73	33	2.6	
91+76.5	TO	104+55.5	LT	1279.0	4.00	0			12.8		568	256	20.2	
91+81.0	TO	93+69.0	RT	188.0	4.00	0			1.9		84	38	3.0	
94+73.0	TO	144+63.0	RT	4990.0	4.00	0			49.9		2218	998	78.9	
105+08.5	TO	144+64.5	LT	3956.0	4.00	0			39.6		1758	791	62.6	
145+49.5	TO	164+79.27	LT	1929.8	4.00	0			19.3		858	386	30.5	STA EQ: 164+79.27 BK = 164+99.59 AH
145+51.0	TO	164+79.27	RT	1928.3	4.00	0			19.3		857	386	30.5	STA EQ: 164+79.27 BK = 164+99.59 AH
164+99.59	TO	172+15.0	LT	715.4	4.00	0			7.2		318	143	11.3	STA EQ: 164+79.27 BK = 164+99.59 AH
164+99.59	TO	171+72.5	RT	672.9	4.00	0			6.7		299	135	10.6	STA EQ: 164+79.27 BK = 164+99.59 AH
173+03.0	TO	180+75.0	LT	772.0	4.00	0			7.7		343	154	12.2	END 4' WIDE PROP. HMA SHOULDER, 8" AT EXISTING 4' WIDE SHOULDER
172+67.5	TO	180+75.0	RT	807.5	4.00	0			8.1		359	162	12.8	END 4' WIDE PROP. HMA SHOULDER, 8" AT EXISTING 4' WIDE SHOULDER
180+75.0	TO	195+75.0	LT	1500.0	0.00	4.00		667		74.7		300	47.5	
180+75.0	TO	194+12.0	RT	1337.0	0.00	4.00		594		66.6		267	42.3	
194+12.0	TO	213+95.0	RT	1983.0	5.33	4.00		881	19.8	98.7	1102	925		
195+75.0	TO	213+95.0	LT	1820.0	5.33	4.00		809	18.2	90.6	1078	849		
213+95.0	TO	214+25.0	RT	30.0	5.33	4.00		13	0.3	1.5	18	14		
213+95.0	TO	214+25.0	LT	30.0	5.33	4.00		13	0.3	1.5	18	14		
214+25.0	TO	214+35.0	RT	10.0	0.00	4.00		4		0.5		2		

MODEL: A:\0_Sch_Schedule.dwg
 FILE NAME: C:\Users\jillmiller\OneDrive\Documents\DOT\Office\DOT\Project\78898\CAD\Drawings\DOT\Office\DOT\Project\78898\CAD\Drawings\DOT\78898-Schedule.dwg

USER NAME = whitode	DESIGNED -	REVISED -
	DRAWN -	REVISED -
PLOT SCALE = 100.0000' / in.	CHECKED -	REVISED -
PLOT DATE = 6/28/2021	DATE -	REVISED -

STATE OF ILLINOIS
DEPARTMENT OF TRANSPORTATION

SCHEDULES (SHOULDERS)			
SCALE:	SHEET	OF SHEETS	STA. TO STA.

F.A.P. RTE.	SECTION	COUNTY	TOTAL SHEETS	SHEET NO.
845	112RS-5	FRANKLIN	31	13
CONTRACT NO. 78898				
ILLINOIS		FED. AID PROJECT		

SHOULDER SCHEDULE (2 OF 2)

LOCATION STATION TO STATION				SHOULDER LENGTH	PROPOSED SHOULDER WIDTH	EXISTING SHOULDER WIDTH	HOT-MIX ASPHALT SURFACE REMOVAL - BUTT JOINT	HOT-MIX ASPHALT SURFACE REMOVAL, 1"	EXCAVATING AND GRADING EXISTING SHOULDER	HOT-MIX ASPHALT SHOULDERS	HOT-MIX ASPHALT SHOULDERS, 8"	BITUMINOUS MATERIALS (TACK COAT)	AGGREGATE WEDGE SHOULDER, TYPE B	COMMENTS
IL 154				FOOT	FOOT	FOOT	SQ YD	SQ YD	UNIT	TON	SQ YD	POUND	TON	
START	TO	END	O/S											
214+25.0	TO	214+35.0	LT	10	0.00	4.00	4			0.5		2		
214+35.0	TO	216+45.0	RT/LT	210	-	-								STRUCTURE OMISSION (SN 028-0050)
216+45.0	TO	216+55.0	RT	10	0.00	4.00	4			0.5		2		
216+45.0	TO	216+55.0	LT	10	0.00	4.00	4			0.5		2		
216+55.0	TO	216+85.0	RT	30	5.33	4.00	13		0.3	1.5	18	14		
216+55.0	TO	216+85.0	LT	30	5.33	4.00	13		0.3	1.5	18	14		
216+85.0	TO	274+55.0	RT	5770	5.33	4.00		2564	57.7	287.2	3417	2692		
216+85.0	TO	274+55.0	LT	5770	5.33	4		2564	57.7	287.2	3417	2692		
274+55.0	TO	274+62.0	RT	7.0	5.33	4.00	3		0.1	0.3	4	3		
274+55.0	TO	274+79.0	LT	24.0	5.33	4.00	11		0.2	1.2	14	11		
274+62.0	TO	274+95.0	RT	33.0	0.00	4.00	15			1.6		7		
274+79.0	TO	274+95.0	LT	16.0	0.00	4.00	7			0.8		3		
274+95.0	TO	279+35.0	RT/LT	440.0	-	-								STRUCTURE OMISSION (SN 028-0051)
279+35.0	TO	279+41.0	RT	6.0	0.00	4.00	3			0.3		1		
279+35.0	TO	279+59.0	LT	24.0	0.00	4.00	11			1.2		5		
279+41.0	TO	279+75.0	RT	34.0	5.33	4.00	15		0.3	1.7	20	16		
279+59.0	TO	279+75.0	LT	16.0	5.33	4.00	7		0.2	0.8	9	7		
279+75.0	TO	291+71.0	RT	1196.0	5.33	4.00		532	12.0	59.5	708	558		
279+75.0	TO	291+01.0	LT	1126.0	5.33	4.00		500	11.3	56.0	667	525		
291+01.0	TO	306+65.0	LT	1564.0	0	4.00		695		77.9		313	49.5	
291+71.0	TO	306+65.0	RT	1494.0	0	4.00		664		74.4		299	47.3	
306+65.0	TO	307+05.0	LT	40.0	0.00	4.00	18			2.0		8	1.3	
306+65.0	TO	307+05.0	RT	40.0	0.00	4.00	18			2.0		8	1.3	
TOTALS							176	10470	481	1193	23946	15601	668	

MODEL: A:\0_Scans_Schedule.dwg
 FILE NAME: P:\Illinois\DOT\Office\District 9\Projects\78898\CADD\Sheet\DOT\Documents\DOT\Office\District 9\Projects\78898\CADD\Sheet\DOT\78898-Schedule.dwg

USER NAME = whitode PLOT SCALE = 100.0000' / in. PLOT DATE = 6/28/2021	DESIGNED - DRAWN - CHECKED - DATE -	REVISED - REVISED - REVISED - REVISED -	STATE OF ILLINOIS DEPARTMENT OF TRANSPORTATION	SCHEDULES (SHOULDERS CONTINUED)	SCALE: SHEET OF SHEETS STA. TO STA.	F.A.P. RTE. SECTION COUNTY TOTAL SHEETS SHEET NO. 845 112RS-5 FRANKLIN 31 14 CONTRACT NO. 78898 ILLINOIS FED. AID PROJECT
--	--	--	---	--	---	---

PAVEMENT MARKING SCHEDULE (1 OF 1)

LOCATION STATION TO STATION			LENGTH	THERMOPLASTIC PAVEMENT MARKING						COMMENTS	
				LINE 4"					LETTERS AND SYMBOLS		LINE 24"
				EDGE	CENTERLINE			EDGE			
				LEFT SOLID	LEFT SOLID	SKIP DASH	RIGHT SOLID	RIGHT SOLID	WHITE SQ FT		WHITE FOOT
IL 154			FOOT	FOOT	FOOT	FOOT	FOOT	FOOT	FOOT		
START	TO	END									
19+83	TO	24+78	495	495	495	120		495			
19+85									13	RAILROAD STOP BAR NEAR TRACKS	
20+41									13	RAILROAD STOP BAR NEAR TRACKS	
21+94									13	RAILROAD STOP BAR WITH SYMBOL	
22+19								61.2		"R X R"	
22+44									13	RAILROAD STOP BAR WITH SYMBOL	
24+78	TO	44+47	1969	1969		490		1969			
44+47	TO	54+00	953	953		240	953	953			
54+00	TO	55+73	173	173	173		173	173			
55+73	TO	66+19.44	1046	1046	1046	260		1046			
66+19.44 BK	=	66+33.36 AH								STATION EQUATION	
66+33.36	TO	68+10	177	177	177	40		177			
68+10	TO	153+25	8515	8515		2130		8515			
153+25	TO	160+38	713	713		180	713	713			
160+38	TO	164+22	384	384		100		384			
164+22	TO	164+79.27	57	57	57	10		57			
164+79.27 BK	=	164+99.59 AH								STATION EQUATION	
164+99.59	TO	171+60	660	660	660	170		660			
171+60	TO	267+40	9580	9580		2400		9580			
267+40	TO	274+95	755	755		190	755	755			
274+95	TO	285+00	1005	1005	1005	250		1005			
285+00	TO	307+05	2205	2205		550		2205			
SUB - TOTALS				28687	3613	7130	2594	28687			
TOTALS				70711					61.2	52	

MODEL_A_00_Sched_1_Pavement_Markings.dgn
 USER: white
 PLOT DATE: 6/28/2021

USER NAME = white	DESIGNED -	REVISED -
PLOT SCALE = 100.0000' / in.	DRAWN -	REVISED -
PLOT DATE = 6/28/2021	CHECKED -	REVISED -
	DATE -	REVISED -

**STATE OF ILLINOIS
DEPARTMENT OF TRANSPORTATION**

SCHEDULES (PAVEMENT MARKING)

SCALE: SHEET OF SHEETS STA. TO STA.

F.A.P. RTE.	SECTION	COUNTY	TOTAL SHEETS	SHEET NO.
845	112RS-5	FRANKLIN	31	17
CONTRACT NO. 78898				
ILLINOIS FED. AID PROJECT				

PATCHING SCHEDULE (1 OF 5)

LOCATION (APPROX. STA)	EASTBOUND LANES			WESTBOUND LANES			CLASS C PATCHES, TYPE I, 11 INCH	CLASS C PATCHES, TYPE II, 11 INCH	CLASS C PATCHES, TYPE III, 11 INCH	CLASS C PATCHES, TYPE IV, 11 INCH	CLASS C PATCHES, TYPE I, 13 INCH	CLASS C PATCHES, TYPE II, 13 INCH	CLASS C PATCHES, TYPE III, 13 INCH	CLASS C PATCHES, TYPE IV, 13 INCH	COMMENTS
	LENGTH	WIDTH	AREA	LENGTH	WIDTH	AREA									
IL 154	FOR INFORMATION ONLY														
STA	FOOT	FOOT	SQ YD	FOOT	FOOT	SQ YD	SQ YD	SQ YD	SQ YD	SQ YD	SQ YD	SQ YD	SQ YD	SQ YD	SQ YD
21+70	4	13	5.8	4	13	5.8							11.6		
22+12	4	13	5.8	4	13	5.8							11.6		
23+48	20	13	28.9												28.9
23+80	4	13	5.8	4	13	5.8							11.6		
24+40	4	13	5.8	4	13	5.8							11.6		
25+30	4	13	5.8										5.8		
25+60	4	13	5.8	4	13	5.8							11.6		
25+90				15	13	21.7								21.7	
26+20	4	13	5.8										5.8		
27+40	4	13	5.8	4	13	5.8							11.6		
32+80	5	13	7.2	5	13	7.2							14.4		
33+10				5	13	7.2							7.2		
33+40	4	13	5.8	4	13	5.8							11.6		
35+50				4	13	5.8							5.8		
37+60	8	13	11.6	8	13	11.6							23.2		
40+00	5	13	7.2	5	13	7.2							14.4		
40+30	4	13	5.8	4	13	5.8							11.6		
43+60	4	13	5.8	4	13	5.8							11.6		
45+70	4	13	5.8	4	13	5.8							11.6		
46+00	4	13	5.8	4	13	5.8							11.6		
47+80	4	13	5.8										5.8		
48+10	4	13	5.8	4	13	5.8							11.6		
52+80	4	13	5.8										5.8		
53+25	4	13	5.8	4	13	5.8							11.6		
53+53	4	13	5.8	4	13	5.8							11.6		
54+10	4	13	5.8	5	13	7.2							13.0		
54+40	4	13	5.8										5.8		
54+70	4	13	5.8	4	13	5.8							11.6		
67+55	5	13	7.2										7.2		
67+86	6	13	8.7	10	13	14.4							23.1		
84+52	4	13	5.8	4	13	5.8							11.6		
86+15	4	13	5.8	4	13	5.8							11.6		
89+15	4	13	5.8										5.8		
91+55	4	13	5.8	4	13	5.8							11.6		
91+75	24	13	34.7	16	13	23.1								23.1	34.7
93+00	12	13	17.3	10	13	14.4							14.4	17.3	
97+00	4	13	5.8										5.8		
105+83	4	13	5.8	4	13	5.8							11.6		
106+11	7	13	10.1	12	13	17.3							10.1	17.3	
106+58	4	13	5.8										5.8		
113+50	4	13	5.8	4	13	5.8							11.6		
113+80	5	13	7.2	5	13	7.2							14.4		
114+38	6	13	8.7	6	13	8.7							17.4		
124+00	6	13	8.7	4	13	5.8							14.5		
124+30	6	13	8.7	4	13	5.8							14.5		

MODEL: A:\0_Scale_Schedule.dwg
 FILE NAME: P:\Illinois\DOT\Office\District 9\Project\78898\CADD\Sheet\07 78898-Schedule.dwg

USER NAME = whitode	DESIGNED -	REVISED -
	DRAWN -	REVISED -
PLOT SCALE = 100.0000' / in.	CHECKED -	REVISED -
PLOT DATE = 6/28/2021	DATE -	REVISED -

**STATE OF ILLINOIS
DEPARTMENT OF TRANSPORTATION**

SCHEDULES (PATCHING)

SCALE: SHEET OF SHEETS STA. TO STA.

F.A.P. RTE.	SECTION	COUNTY	TOTAL SHEETS	SHEET NO.
845	112RS-5	FRANKLIN	31	18
CONTRACT NO. 78898				
		ILLINOIS	FED. AID PROJECT	

PATCHING SCHEDULE (3 OF 5)

LOCATION (APPROX. STA)	EASTBOUND LANES			WESTBOUND LANES			CLASS C PATCHES, TYPE I, 11 INCH	CLASS C PATCHES, TYPE II, 11 INCH	CLASS C PATCHES, TYPE III, 11 INCH	CLASS C PATCHES, TYPE IV, 11 INCH	CLASS C PATCHES, TYPE I, 13 INCH	CLASS C PATCHES, TYPE II, 13 INCH	CLASS C PATCHES, TYPE III, 13 INCH	CLASS C PATCHES, TYPE IV, 13 INCH	COMMENTS
	LENGTH	WIDTH	AREA	LENGTH	WIDTH	AREA									
IL 154	FOR INFORMATION ONLY														
STA	FOOT	FOOT	SQ YD	FOOT	FOOT	SQ YD	SQ YD	SQ YD	SQ YD	SQ YD	SQ YD	SQ YD	SQ YD	SQ YD	
165+77	9	13	13.0									13.0			
168+36	4	13	5.8									5.8			
168+60	25	13	36.1											36.1	
169+15	16	13	23.1										23.1		
169+30	16	6	10.7									10.7			
169+60	5	13	7.2									7.2			
169+90	5	13	7.2									7.2			
170+50	4	13	5.8									5.8			
170+80	4	13	5.8									5.8			
171+75	6	13	8.7									8.7			
172+65	5	13	7.2									7.2			
174+15	5	13	7.2									7.2			
174+62	6	13	8.7									8.7			
175+67	6	13	8.7									8.7			
175+85	6	13	8.7									8.7			
176+30	7	13	10.1	5	13	7.2						17.3			
180+75				4	12	5.3						5.3			
181+90				4	12	5.3		5.3							
182+85	4	12	5.3					5.3							
183+87	7	12	9.3					9.3							
184+90	8	12	10.7	8	12	10.7		21.4							
185+90				5	12	6.7		6.7							
187+44	4	12	5.3					5.3							
189+55	4	12	5.3					5.3							
192+00				8	12	10.7		10.7							
193+00				4	12	5.3		5.3							
193+90	16	12	21.3	10	12	13.3		13.3	21.3						
194+05				4	12	5.3		5.3							
194+92				23	12	30.7				30.7					
195+17	6	9	6.0					6.0							
196+10	22	12	29.3	22	12	29.3				58.6					
198+50	4	12	5.3	4	12	5.3		10.6							
199+00	9	12	12.0	16	12	21.3		12.0	21.3						
199+90				6	12	8.0		8.0							
200+00	10	12	13.3					13.3							
201+55	4	12	5.3	4	12	5.3		10.6							
204+05				6	12	8.0		8.0							
207+42				4	12	5.3		5.3							
208+22				12	6	8.0		8.0							
208+60	4	12	5.3	4	12	5.3		10.6							
209+33				4	12	5.3		5.3							
210+00				9	12	12.0		12.0							
210+70				36	6	24.0			24.0						
211+05	5	12	6.7	5	12	6.7		13.4							
212+00				10	12	13.3		13.3							

MODEL: A:\0_Scans_Schedule\FILE NAME: p:\pub\mason\dot\illinois\pwr\p\DOT\Documents\DOT Office\District 9\Project\78898\CADD\data\CAD\patches\07 78898-Schedule.dgn

USER NAME = whitode	DESIGNED -	REVISED -
	DRAWN -	REVISED -
PLOT SCALE = 100.0000' / in.	CHECKED -	REVISED -
PLOT DATE = 6/28/2021	DATE -	REVISED -

**STATE OF ILLINOIS
DEPARTMENT OF TRANSPORTATION**

SCHEDULES (PATCHING CONTINUED)

SCALE: SHEET OF SHEETS STA. TO STA.

F.A.P. RTE.	SECTION	COUNTY	TOTAL SHEETS	SHEET NO.
845	112RS-5	FRANKLIN	31	20
CONTRACT NO. 78898				
ILLINOIS FED. AID PROJECT				

PATCHING SCHEDULE (4 OF 5)

LOCATION (APPROX. STA)	EASTBOUND LANES			WESTBOUND LANES			CLASS C PATCHES, TYPE I, 11 INCH	CLASS C PATCHES, TYPE II, 11 INCH	CLASS C PATCHES, TYPE III, 11 INCH	CLASS C PATCHES, TYPE IV, 11 INCH	CLASS C PATCHES, TYPE I, 13 INCH	CLASS C PATCHES, TYPE II, 13 INCH	CLASS C PATCHES, TYPE III, 13 INCH	CLASS C PATCHES, TYPE IV, 13 INCH	COMMENTS
	LENGTH	WIDTH	AREA	LENGTH	WIDTH	AREA									
IL 154	FOR INFORMATION ONLY														
STA	FOOT	FOOT	SQ YD	FOOT	FOOT	SQ YD	SQ YD	SQ YD	SQ YD	SQ YD	SQ YD	SQ YD	SQ YD	SQ YD	
212+36				6	6	4.0	4.0								
212+62				6	6	4.0	4.0								
213+60				68	12	90.7				90.7					
216+80	8	12	10.7					10.7							
217+65	6	12	8.0	6	12	8.0		16.0							
217+83				6	6	4.0	4.0								
218+13				6	12	8.0		8.0							
218+48	4	12	5.3	4	12	5.3		10.6							
219+20				20	6	13.3		13.3							
219+70				30	12	40.0				40.0					
220+15				10	6	6.7		6.7							
220+55	4	12	5.3	4	12	5.3		10.6							
220+73	6	6	4.0				4.0								
220+83	6	6	4.0				4.0								
221+00	12	12	16.0	12	12	16.0			32.0						
221+20				10	6	6.7		6.7							
221+56				8	6	5.3		5.3							
221+98	9	12	12.0	9	12	12.0		24.0							
226+00	8	12	10.7	8	12	10.7		21.4							
230+45	4	12	5.3					5.3							
231+60	4	12	5.3	4	12	5.3		10.6							
232+00	4	12	5.3					5.3							
233+00	7	12	9.3	7	12	9.3		18.6							
234+00				8	12	10.7		10.7							
234+70				8	6	5.3		5.3							
235+02				11	12	14.7		14.7							
236+95				18	12	24.0			24.0						
237+11				6	6	4.0	4.0								
237+25				6	6	4.0	4.0								
237+36				12	12	16.0			16.0						
237+95	12	6	8.0					8.0							
238+04	6	12	8.0	6	12	8.0		16.0							
238+25	6	6	4.0				4.0								
238+50				12	6	8.0		8.0							
239+00	9	12	12.0	9	12	12.0		24.0							
240+05	4	12	5.3	4	12	5.3		10.6							
240+35	4	12	5.3	4	12	5.3		10.6							
242+05	4	12	5.3	4	12	5.3		10.6							
245+05	8	12	10.7	5	12	6.7		17.4							
246+65	4	12	5.3					5.3							
247+05				4	12	5.3		5.3							
248+05	6	12	8.0	6	12	8.0		16.0							
249+05				5	12	6.7		6.7							
253+60				4	12	5.3		5.3							
256+05	4	12	5.3	4	12	5.3		10.6							

MODEL_A_00_Sch_Schedule
FILE_NAME: path:\home\car\illinois\pwr\DOT\Documents\DOT Offices\District 9\Projects\78898\CAD\data\CAD\ sheets\07_78898_Schedule.dgn

USER NAME = whit00e	DESIGNED -	REVISED -
	DRAWN -	REVISED -
PLOT SCALE = 100.0000 ' / in.	CHECKED -	REVISED -
PLOT DATE = 6/28/2021	DATE -	REVISED -

**STATE OF ILLINOIS
DEPARTMENT OF TRANSPORTATION**

SCHEDULES (PATCHING CONTINUED)

SCALE: SHEET OF SHEETS STA. TO STA.

F.A.P. RTE.	SECTION	COUNTY	TOTAL SHEETS	SHEET NO.
845	112RS-5	FRANKLIN	31	21
				CONTRACT NO. 78898
		ILLINOIS	FED. AID PROJECT	

PATCHING SCHEDULE (5 OF 5)

LOCATION (APPROX. STA)	EASTBOUND LANES			WESTBOUND LANES			CLASS C PATCHES, TYPE I, 11 INCH	CLASS C PATCHES, TYPE II, 11 INCH	CLASS C PATCHES, TYPE III, 11 INCH	CLASS C PATCHES, TYPE IV, 11 INCH	CLASS C PATCHES, TYPE I, 13 INCH	CLASS C PATCHES, TYPE II, 13 INCH	CLASS C PATCHES, TYPE III, 13 INCH	CLASS C PATCHES, TYPE IV, 13 INCH	COMMENTS
	LENGTH	WIDTH	AREA	LENGTH	WIDTH	AREA									
IL 154	FOR INFORMATION ONLY														
STA	FOOT	FOOT	SQ YD	FOOT	FOOT	SQ YD	SQ YD	SQ YD	SQ YD	SQ YD	SQ YD	SQ YD	SQ YD	SQ YD	
257+55	4	12	5.3	4	12	5.3		10.6							
260+56	4	12	5.3	4	12	5.3		10.6							
263+06	4	12	5.3	4	12	5.3		10.6							
264+00	4	12	5.3	8	12	10.7		16.0							
264+56	4	12	5.3	4	12	5.3		10.6							
265+05	6	12	8.0	5	12	6.7		14.7							
267+75	4	12	5.3	4	12	5.3		10.6							
270+50	4	12	5.3	4	12	5.3		10.6							
272+00				10	12	13.3		13.3							
273+05	5	12	6.7	10	12	13.3		20.0							
273+54	10	12	13.3	8	12	10.7		24.0							
273+65				6	6	4.0	4.0								
274+20	10	6	6.7					6.7							
274+60				24	6	16.0			16.0						
280+60	10	12	13.3					13.3							
281+08	12	12	16.0						16.0						
281+65	4	12	5.3	4	12	5.3		10.6							
282+10	5	12	6.7					6.7							
285+12	10	12	13.3	8	12	10.7		24.0							
285+70	4	12	5.3	4	12	5.3		10.6							
287+10	10	12	13.3					13.3							
288+10	10	12	13.3					13.3							
289+10	10	12	13.3					13.3							
291+60	4	12	5.3	4	12	5.3		10.6							
292+12	10	12	13.3					13.3							
294+26	6	6	4.0				4.0								
295+12	4	12	5.3	4	12	5.3		10.6							
296+10				8	12	10.7		10.7							
299+13				4	12	5.3		5.3							
301+72	4	12	5.3	4	12	5.3		10.6							
304+65	4	12	5.3	4	12	5.3		10.6							
305+12	4	12	5.3					5.3							
306+13	4	12	5.3	4	12	5.3		10.6							
306+68	4	12	5.3	4	12	5.3		10.6							
307+02	4	12	5.3	4	12	5.3		10.6							
TOTALS							40	960	171	220	3	941	179	418	

MODEL: A:\0_Scale_Schedule
 FILE NAME: P:\Information\Illinois\DOT\Documents\DOT\Office\District 9\Project\78898\CADD\Sheet\DOT\78898-Schedule.dgn

USER NAME = whitode	DESIGNED -	REVISED -
	DRAWN -	REVISED -
PLOT SCALE = 100.0000' / in.	CHECKED -	REVISED -
PLOT DATE = 6/28/2021	DATE -	REVISED -

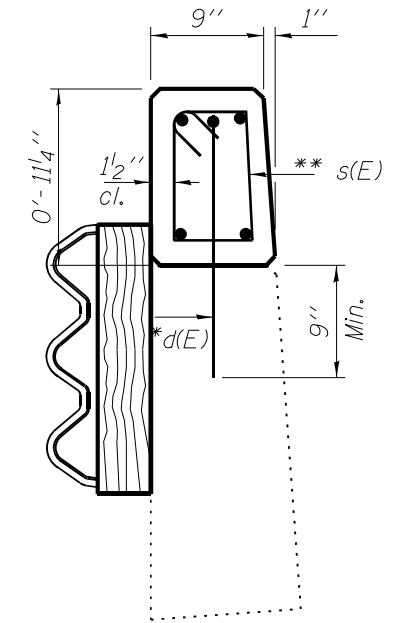
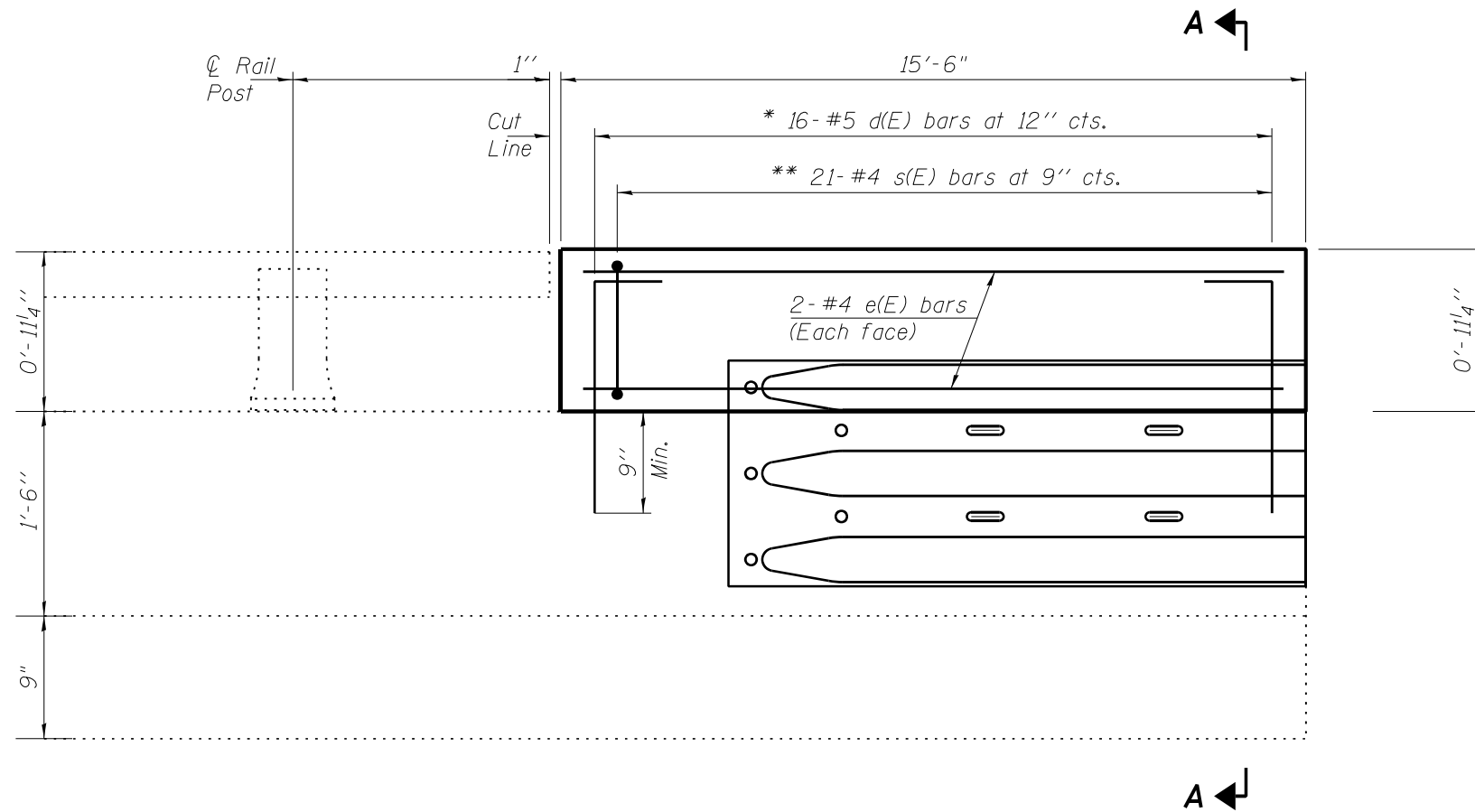
**STATE OF ILLINOIS
DEPARTMENT OF TRANSPORTATION**

SCHEDULES (PATCHING CONTINUED)

SCALE: SHEET OF SHEETS STA. TO STA.

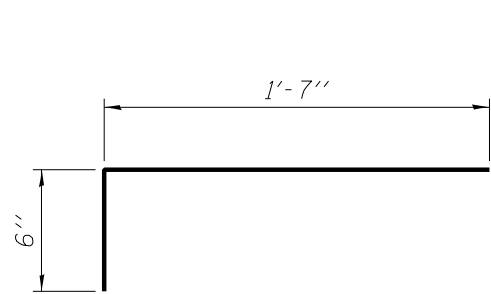
F.A.P. RTE.	SECTION	COUNTY	TOTAL SHEETS	SHEET NO.
845	112RS-5	FRANKLIN	31	22
CONTRACT NO. 78898				
ILLINOIS FED. AID PROJECT				

PARAPET DETAILS
SN 028-0050
(2 EAST END AND 2 WEST END)

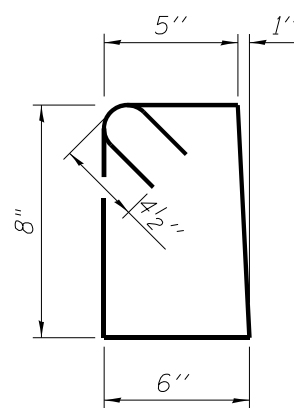


SECTION A - A

INSIDE ELEVATION OF PARAPET



BAR d(E)



BAR s(E)

* d(E) bars to be epoxy grouted in 7/8"φ x 9" minimum holes. Cut in field as required.

** Tilt s(E) bars as needed to fit.

Note

To be used: All sections where proposed Traffic Barrier Terminal, Type 6B will tie into existing parapet wall (4 locations total). (See Highway Standard 631033)

NOTE

e(E) BARS MAY HAVE TO BE CUT IN THE FIELD TO FIT

BILL OF MATERIAL

Bar	No.	Size	Length	Shape
d(E)	64	#5	2'-1"	┌
e(E)	16	#4	15'-3"	—
s(E)	84	#4	3'-0"	┘
Concrete Superstructure			Cu. Yd.	1.6
Reinforcement Bars, Epoxy Coated			Pound	480

NOTE

BARS DESIGNATED (E) SHALL BE EPOXY COATED

MODEL: B:\06\In-Detail... FILE NAME: P:\Information\dot\Illinois\dot\Projects\028\005\CADD\Details\028005-Details.dgn

USER NAME = whitode	DESIGNED -	REVISED -
PLOT SCALE = 100.0000' / in.	DRAWN -	REVISED -
PLOT DATE = 6/28/2021	CHECKED -	REVISED -
	DATE -	REVISED -

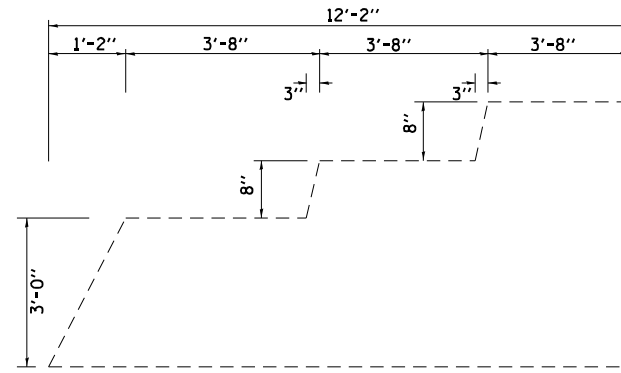
**STATE OF ILLINOIS
DEPARTMENT OF TRANSPORTATION**

DETAILS: PARAPET DETAIL (SN 028-0050)

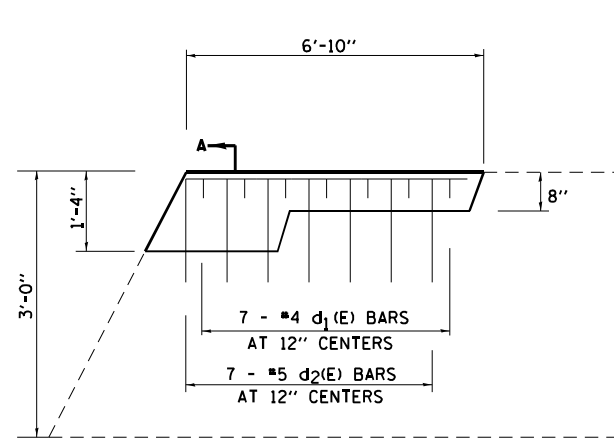
SCALE: SHEET OF SHEETS STA. TO STA.

F.A.P. RTE.	SECTION	COUNTY	TOTAL SHEETS	SHEET NO.
845	112RS-5	FRANKLIN	31	23
CONTRACT NO. 78898				
		ILLINOIS	FED. AID PROJECT	

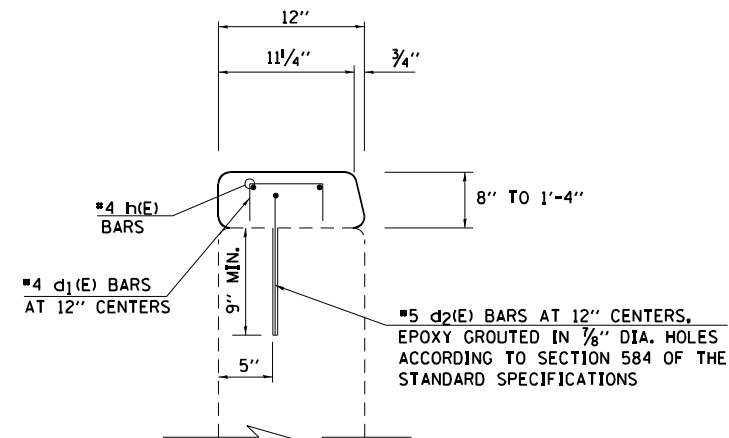
WINGWALL MODIFICATION (SN 028-0050)
(2 EAST END AND 2 WEST END)



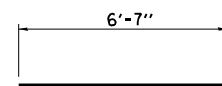
INSIDE ELEVATION (EXISTING)



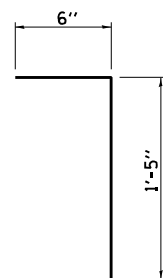
INSIDE ELEVATION (PROPOSED)



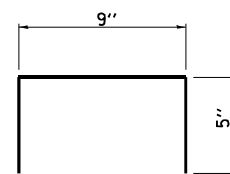
SECTION A-A



BAR h(E)



BAR d2(E)



BAR d1(E)

BILL OF MATERIAL

BAR	NO.	SIZE	LENGTH	SHAPE
d1(E)	28	#4	1'-7"	┌
d2(E)	28	#5	1'-11"	┌
h(E)	8	#4	6'-7"	—
CONCRETE SUPERSTRUCTURE			CU. YD.	0.8
REINFORCEMENT BARS, EPOXY COATED			POUNDS	120

NOTES:
 BARS DESIGNATED (E) SHALL BE EPOXY COATED.

MODEL: C:\005\Self_Details\FILE NAME: P:\p11\m11\005\005\Illinois\p11\DOT\Documents\DOT Office\District 9\Project\028\005\CADD\Sheet\028\005-Details.dgn

USER NAME = whitode	DESIGNED -	REVISED -
PLOT SCALE = 200.0000 ' / in.	DRAWN -	REVISED -
PLOT DATE = 6/28/2021	CHECKED -	REVISED -
	DATE -	REVISED -

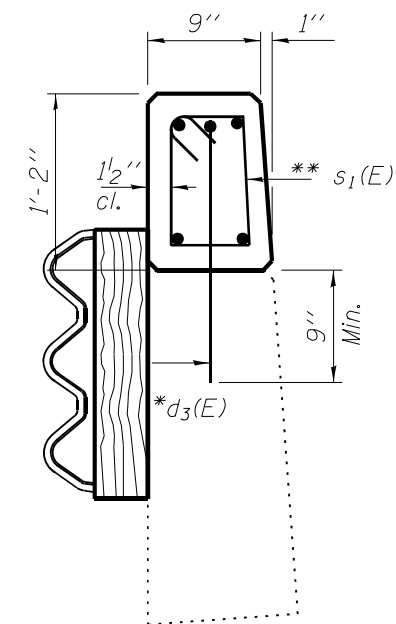
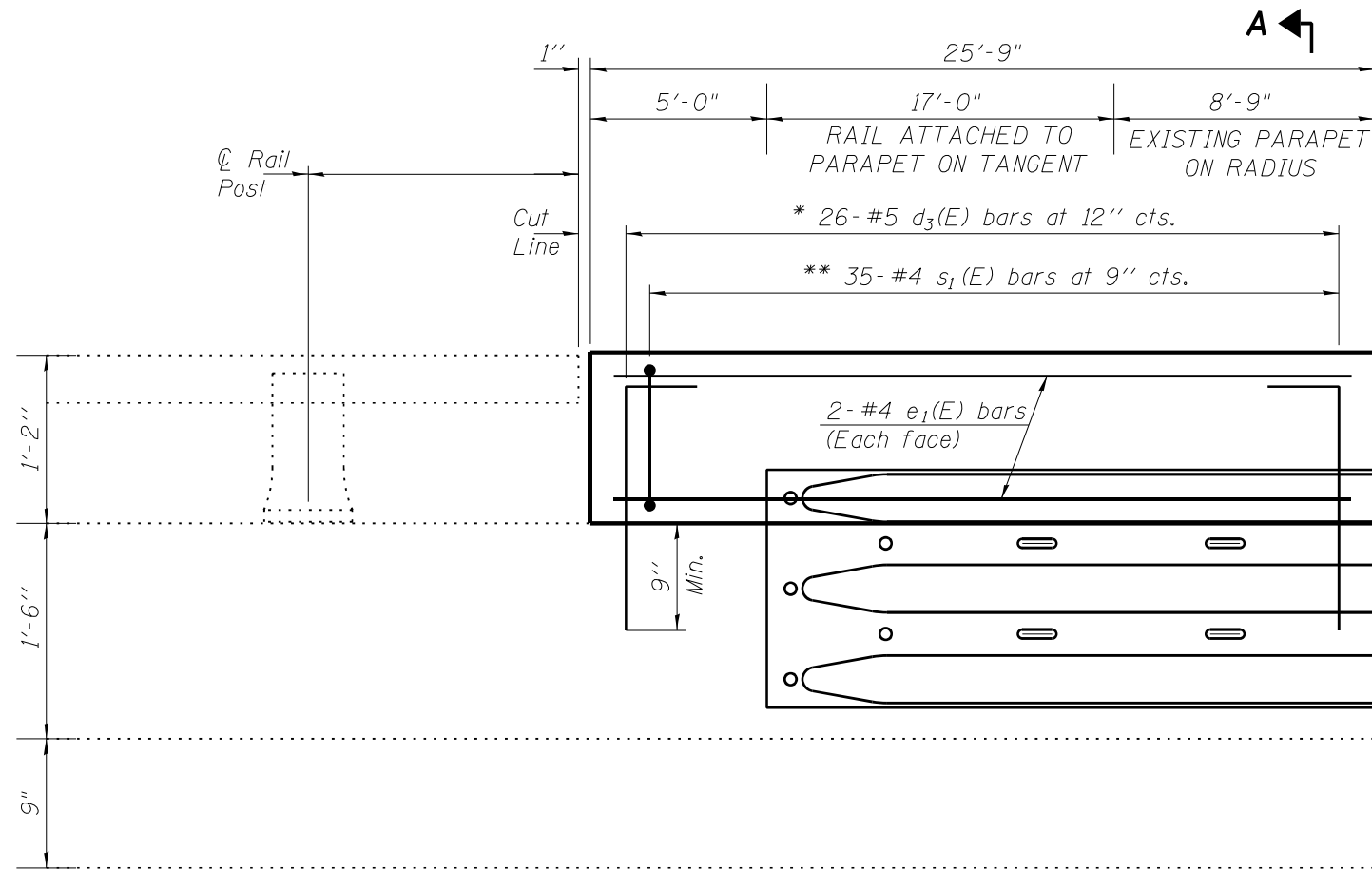
STATE OF ILLINOIS
DEPARTMENT OF TRANSPORTATION

DETAILS: WINGWALL DETAIL (SN 028-0050)

SCALE: SHEET OF SHEETS STA. TO STA.

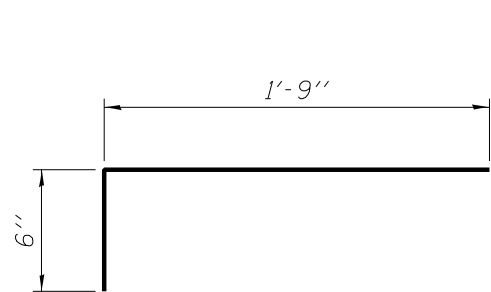
F.A.P. RTE.	SECTION	COUNTY	TOTAL SHEETS	SHEET NO.
845	112RS-5	FRANKLIN	31	24
			CONTRACT NO. 78898	
ILLINOIS FED. AID PROJECT				

PARAPET AND WINGWALL DETAILS
 SN 028-0051
 (2 EAST END AND 2 WEST END)

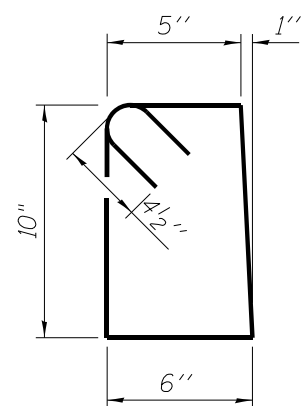


INSIDE ELEVATION OF PARAPET

SECTION A-A



BAR $d_3(E)$



BAR $s_1(E)$

* $d_3(E)$ bars to be epoxy grouted in $7/8$ " ϕ x 9" minimum holes. Cut in field as required.

** Tilt $s_1(E)$ bars as needed to fit.

Note

To be used: All sections where proposed Traffic Barrier Terminal, Type 6B will tie into existing parapet wall (4 locations total). (See Highway Standard 631033)

NOTES

$e_1(E)$ BARS SHALL BE BENT IN THE FIELD TO MATCH THE RADIUS OF THE EXISTING WINGWALL

$e_1(E)$ BARS MAY HAVE TO BE CUT IN THE FIELD TO FIT

BILL OF MATERIAL

Bar	No.	Size	Length	Shape
$d_3(E)$	104	#5	2'-3"	—
$e_1(E)$	16	#4	25'-6"	—
$s_1(E)$	140	#4	3'-4"	□
Concrete Superstructure			Cu. Yd.	3.6
Reinforcement Bars, Epoxy Coated			Pound	840

NOTE

BARS DESIGNATED (E) SHALL BE EPOXY COATED

MODEL: B:\06\In-Detail... FILE NAME: P:\Information\dot\Illinois\dot\Projects\028\0051\CADD\Details\0278898-Details.dwg

USER NAME = whitode	DESIGNED -	REVISED -
PLOT SCALE = 100.0000' / in.	DRAWN -	REVISED -
PLOT DATE = 6/28/2021	CHECKED -	REVISED -
	DATE -	REVISED -

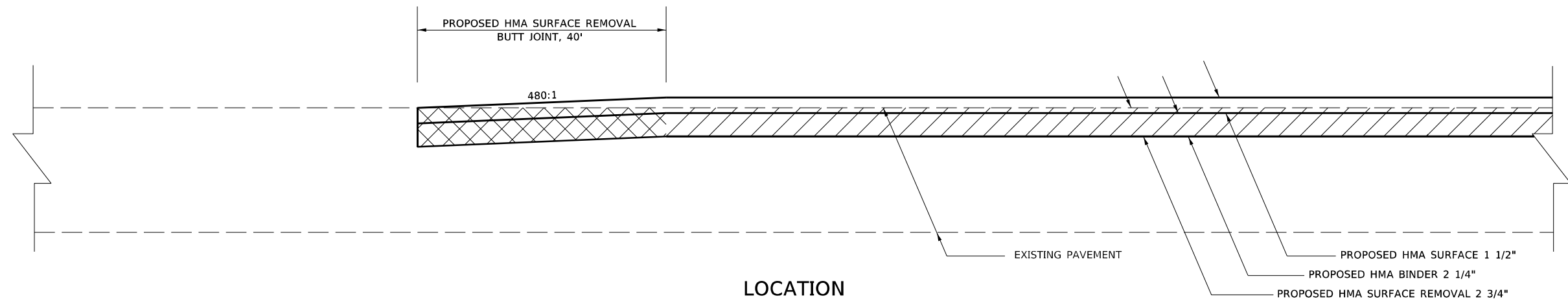
STATE OF ILLINOIS
 DEPARTMENT OF TRANSPORTATION

DETAILS: PARAPET AND WINGWALL DETAIL (SN 028-0051)

SCALE: SHEET OF SHEETS STA. TO STA.

F.A.P. RTE.	SECTION	COUNTY	TOTAL SHEETS	SHEET NO.
845	112RS-5	FRANKLIN	31	25
			CONTRACT NO. 78898	
		ILLINOIS	FED. AID PROJECT	

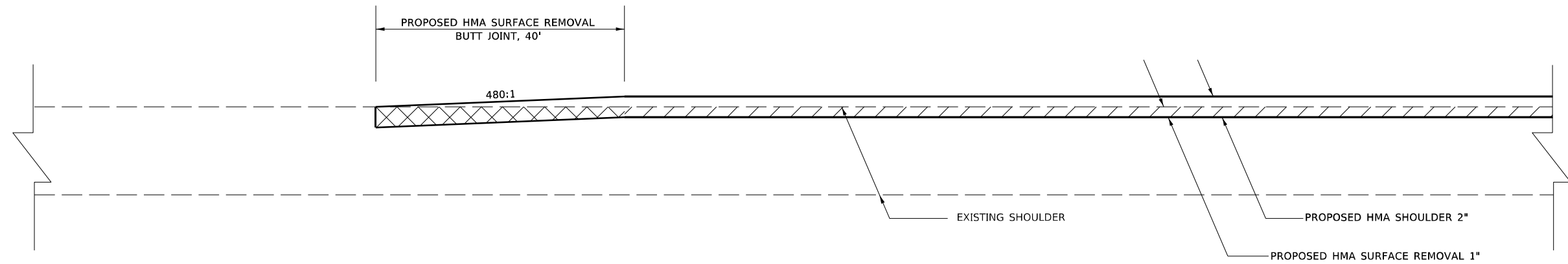
MAINLINE BUTT JOINT DETAIL



LOCATION

- STA. 213+95 TO STA. 214+35
- STA. 216+45 TO STA. 216+85
- STA. 274+55 TO STA. 274+95
- STA. 279+35 TO STA. 279+75
- STA. 306+65 TO STA. 307+05

SHOULDER BUTT JOINT DETAIL



LOCATION

- STA. 213+95 TO STA. 214+35
- STA. 216+45 TO STA. 216+85
- STA. 274+55 TO STA. 274+95
- STA. 279+35 TO STA. 279+75
- STA. 306+65 TO STA. 307+05

MODEL: A_275c-1n_Details
 FILE NAME: P:\Information\GIS\Illinois\DOT\Office\District 9\Projects\78898\CADD\Drawings\DOT\78898-Detail.dwg

USER NAME = whitode	DESIGNED -	REVISED -
	DRAWN -	REVISED -
PLOT SCALE = 5.0000' / in.	CHECKED -	REVISED -
PLOT DATE = 6/28/2021	DATE -	REVISED -

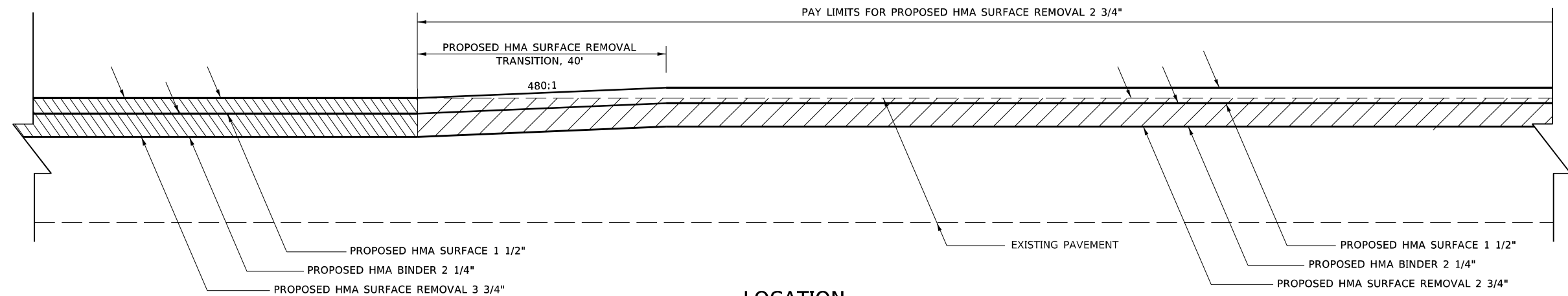
STATE OF ILLINOIS
DEPARTMENT OF TRANSPORTATION

DETAILS: MAINLINE BUTT JOINT DETAIL
SHOULDER BUTT JOINT DETAIL

SCALE: SHEET OF SHEETS STA. TO STA.

F.A.P. RTE.	SECTION	COUNTY	TOTAL SHEETS	SHEET NO.
845	112RS-5	FRANKLIN	31	26
CONTRACT NO. 78898				
ILLINOIS FED. AID PROJECT				

MAINLINE SURFACE REMOVAL TRANSITION DETAIL



LOCATION
STA. 20+55 TO STA. 20+95

MODEL: A_275c-1h_Details
 FILE NAME: p:\highways\cau_illinois\p01\DOT\Documents\DOT_Offices\District_9\Project\78898\CADD\Drawings\07_78898-Detail.dgn

USER NAME = whitode	DESIGNED -	REVISED -
	DRAWN -	REVISED -
PLOT SCALE = 5.0000' / in.	CHECKED -	REVISED -
PLOT DATE = 6/28/2021	DATE -	REVISED -

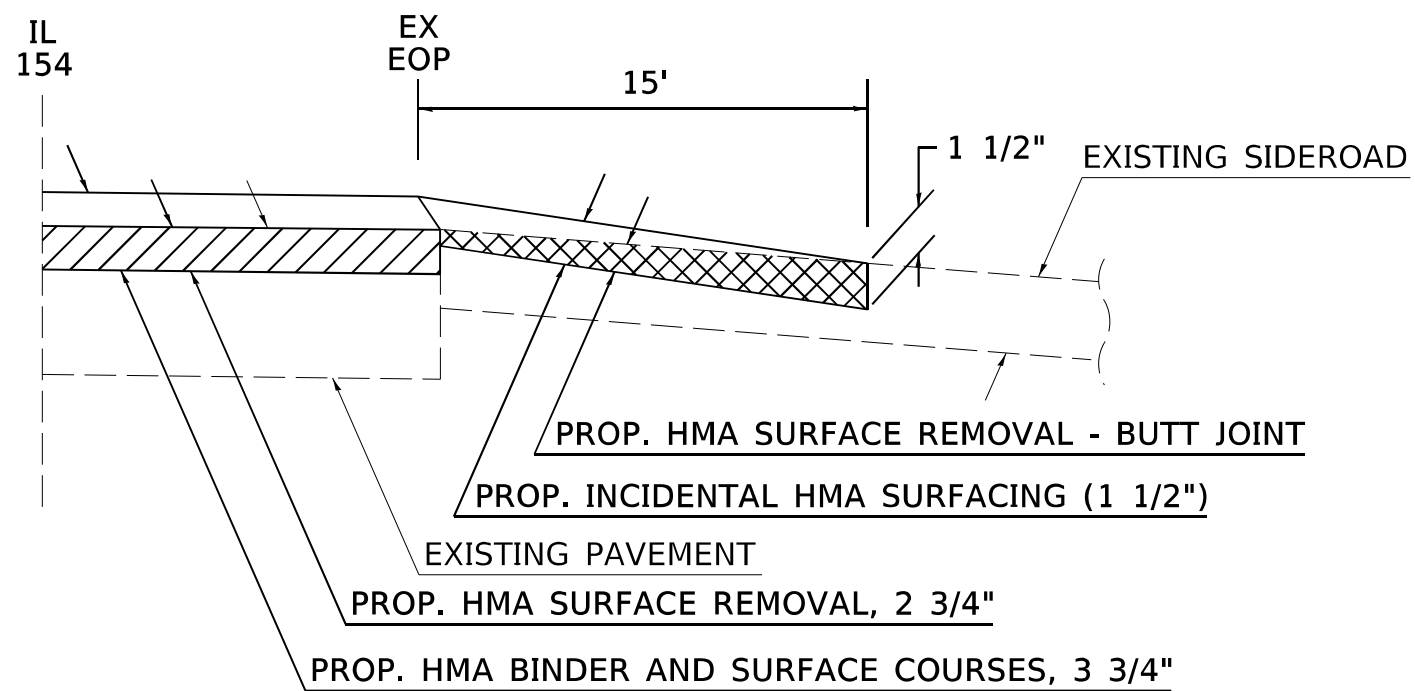
**STATE OF ILLINOIS
DEPARTMENT OF TRANSPORTATION**

DETAILS: MAINLINE SURFACE REMOVAL TRANSITION DETAIL

SCALE: SHEET OF SHEETS STA. TO STA.

F.A.P. RTE. 845	SECTION 112RS-5	COUNTY FRANKLIN	TOTAL SHEETS 31	SHEET NO. 27
CONTRACT NO. 78898			ILLINOIS FED. AID PROJECT	

EX. HMA OR OIL & CHIP SIDEROADS



MODEL: A_275c-1h_Details
 FILE NAME: P:\Information\GIS\Illinois\DOT\Office\District 9\Projects\78898\CADD\Drawings\DOT\78898-Detail.dwg

USER NAME = whitode	DESIGNED -	REVISED -
	DRAWN -	REVISED -
PLOT SCALE = 5.0000' / in.	CHECKED -	REVISED -
PLOT DATE = 6/28/2021	DATE -	REVISED -

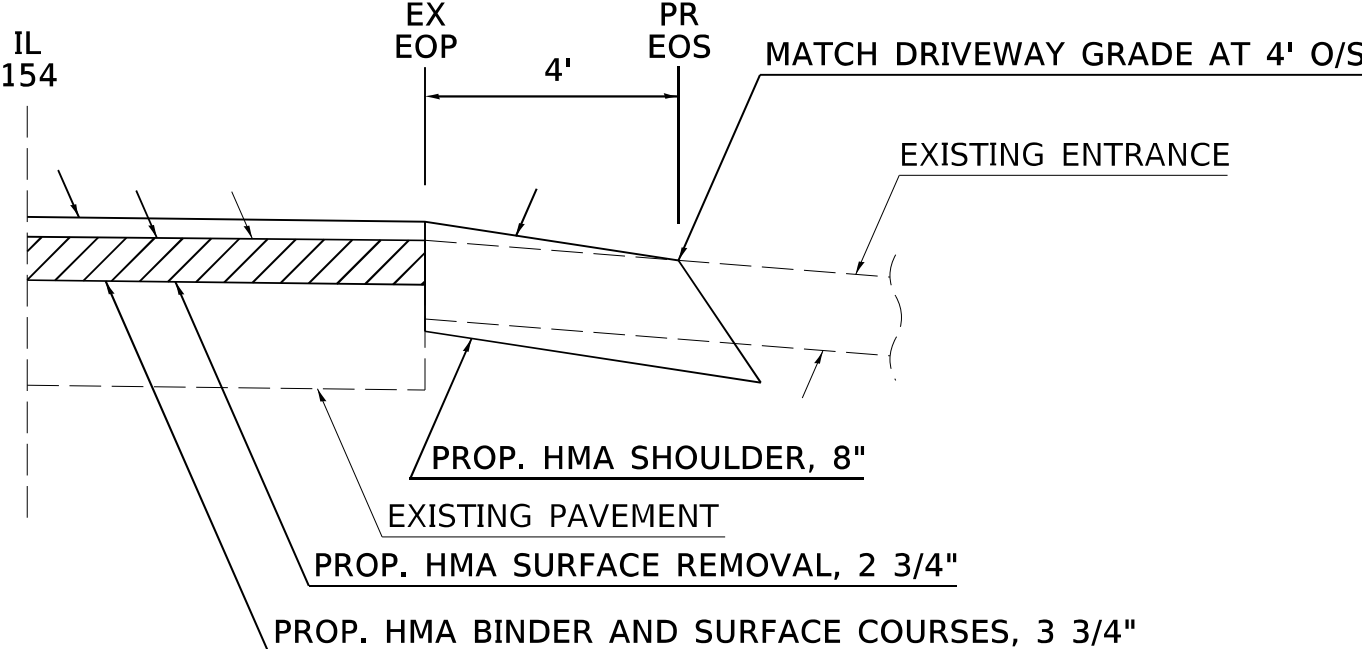
**STATE OF ILLINOIS
DEPARTMENT OF TRANSPORTATION**

DETAILS: SIDEROAD DETAIL

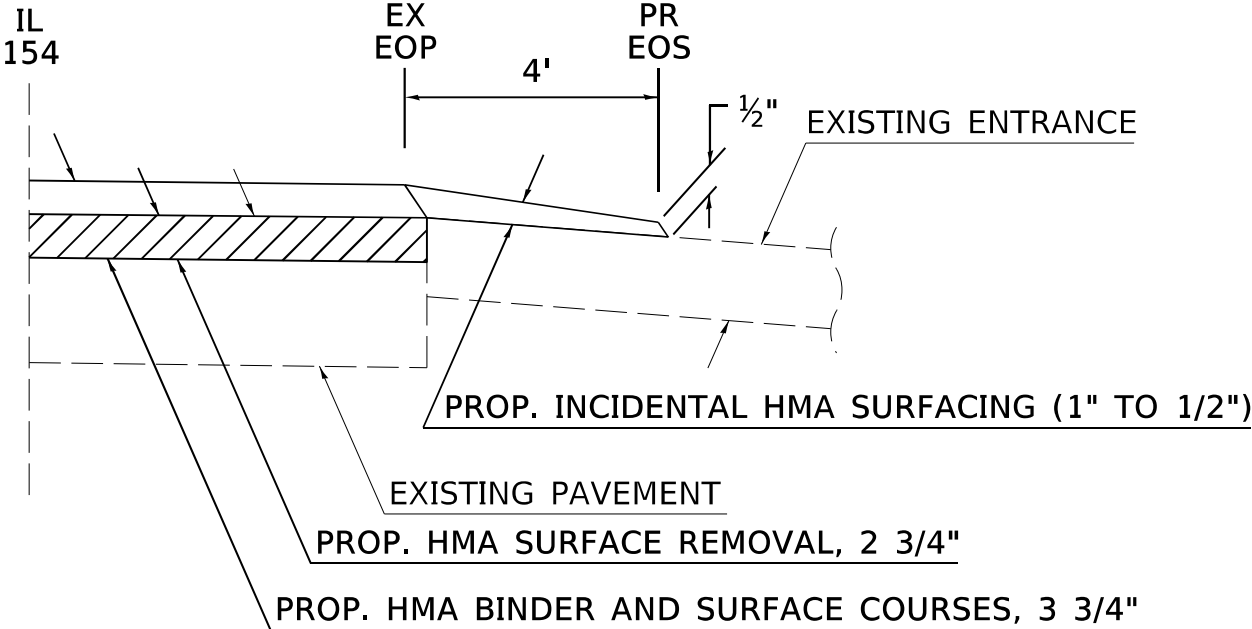
SCALE: SHEET OF SHEETS STA. TO STA.

F.A.P. RTE.	SECTION	COUNTY	TOTAL SHEETS	SHEET NO.
845	112RS-5	FRANKLIN	31	28
CONTRACT NO. 78898				
ILLINOIS FED. AID PROJECT				

**EX. HMA, OIL & CHIP, AND AGGREGATE COMMERCIAL,
PRIVATE, OR FIELD ENTRANCE (HMA SHOULDER, 8")**



EX. PCC COMMERCIAL OR PRIVATE ENTRANCE



MODEL: A_275c-1h_Details
FILE NAME: P:\Information\GIS\Illinois\DOT\Documents\DOT Office\District 9\Projects\78898\CADD\Drawings\07 78898-Details.dwg

USER NAME = whitode	DESIGNED -	REVISED -
	DRAWN -	REVISED -
PLOT SCALE = 5.0000 ' / in.	CHECKED -	REVISED -
PLOT DATE = 6/28/2021	DATE -	REVISED -

**STATE OF ILLINOIS
DEPARTMENT OF TRANSPORTATION**

DETAILS: COMMERCIAL, PRIVATE, AND FIELD ENTRANCE DETAILS

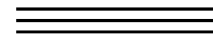
SCALE: SHEET OF SHEETS STA. TO STA.

F.A.P. RTE.	SECTION	COUNTY	TOTAL SHEETS	SHEET NO.
845	112RS-5	FRANKLIN	31	29
CONTRACT NO. 78898			ILLINOIS FED. AID PROJECT	

SHORT TERM PAVEMENT MARKING

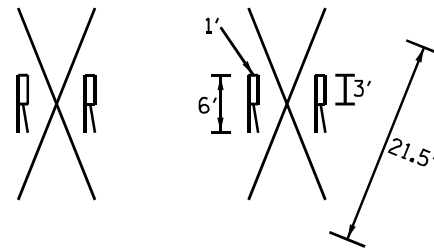
STOP BARS

3 - 4" LINES (LANE WIDTH)



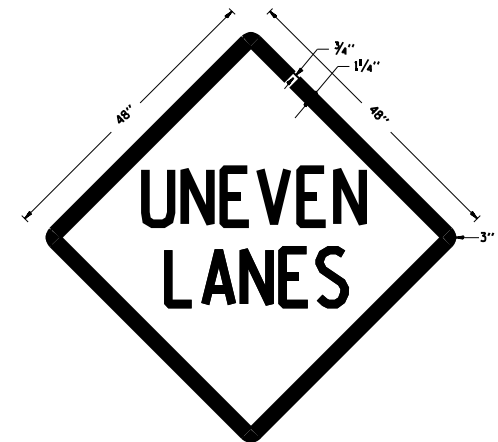
"R X R" SYMBOL

4" LINES FOR EACH SEGMENT
(71' PER "R X R" SYMBOL)



UNEVEN LANES SIGN

W8-11 (48" x 48")



COLORS:

LEGEND AND BORDER - BLACK NON-REFLECTORIZED
BACKGROUND - ORANGE REFLECTORIZED

NOTE: PRIOR TO ALLOWING TRAFFIC ON ANY PORTION OF THE ROADWAY THAT HAS BEEN COLDMILLED OR BEFORE RESURFACING OPERATIONS BEGIN, THE CONTRACTOR SHALL HAVE ERECTED "UNEVEN PAVEMENT" SIGNS THAT CONFORM TO THE ABOVE DETAILS. A MINIMUM OF ONE SIGN AT EACH END OF THE IMPROVEMENT WILL BE REQUIRED. THE CONTRACTOR SHALL MAINTAIN THE "UNEVEN PAVEMENT" SIGNS UNTIL THE RESURFACING OPERATIONS ARE COMPLETED.

IF AT ANY TIME THE SIGNS ARE IN PLACE BUT NOT APPLICABLE, THEY SHALL BE TURNED FROM THE VIEW OF MOTORISTS OR COVERED AS DIRECTED BY THE ENGINEER.

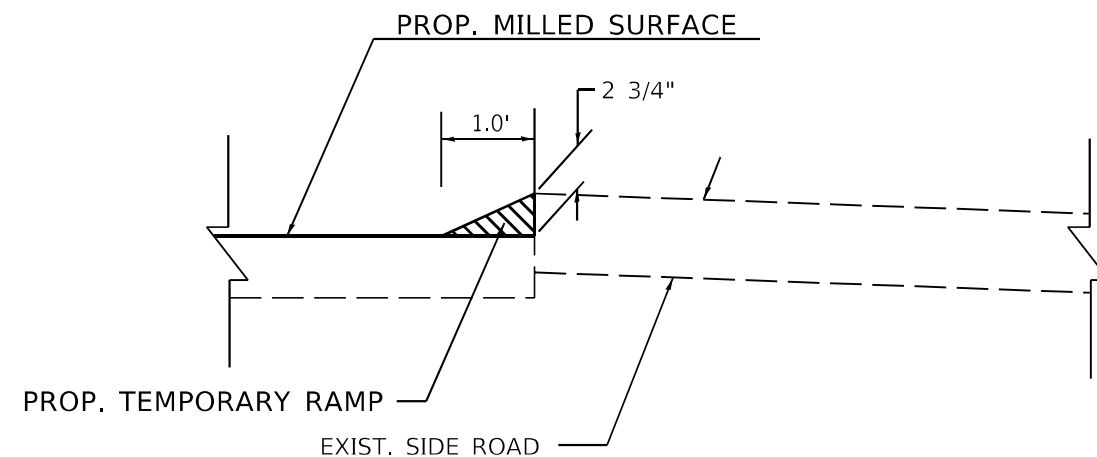
THE COST OF FURNISHING, ERECTING, MAINTAINING, AND REMOVING THE REQUIRED SIGNS SHALL BE INCLUDED IN THE CONTRACT.

REVISIONS

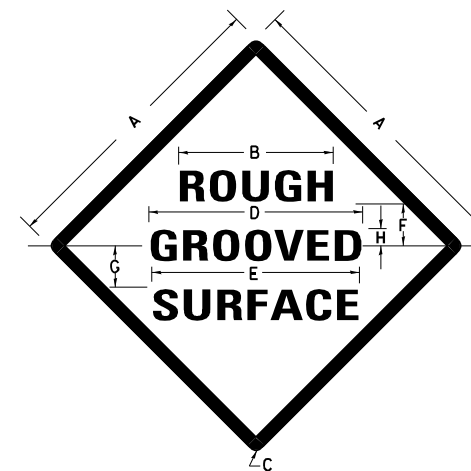
DRAWN	2-15-89
REVISED	4-06-93
REDESIGNED	7-23-04
RESIZED	5-08-08
REVIEWED	5-17-13

STD. 9-41

TEMPORARY RAMP AT SIDEROADS



ILLINOIS STANDARD



COLORS:

LEGEND AND BORDER- BLACK NON-REFLECTORIZED
BACKGROUND- ORANGE REFLECTORIZED

SIGN SIZE	DIMENSIONS							
	A	B	C	D	E	F	G	H
48x48	48.0	24.1	3.0	34.0	33.0	6.0	13.0	3.5

SIGN SIZE	SERIES LINES			MAR-GIN	BOR-DER	BLANK STD.
	1	2	3			
48x48	7C	7C	7C	0.8	1.2	B4-48D

ALL DIMENSIONS IN INCHES

NOTES:

PRIOR TO ALLOWING TRAFFIC ON ANY PORTION OF THE ROADWAY THAT HAS BEEN COLDMILLED, THE CONTRACTOR SHALL HAVE ERECTED "ROUGH GROOVED SURFACE" SIGNS THAT CONFORM TO THE ABOVE DETAILS. A MINIMUM OF ONE SIGN AT EACH END OF THE IMPROVEMENT WILL BE REQUIRED. THE CONTRACTOR SHALL MAINTAIN THE "ROUGH GROOVED SURFACE" SIGNS UNTIL THE COLDMILLED SURFACE IS COVERED WITH LEVELING BINDER OR SURFACE COURSE.

IF AT ANY TIME THE SIGNS ARE IN PLACE BUT NOT APPLICABLE, THEY SHALL BE TURNED FROM THE VIEW OF MOTORISTS OR COVERED AS DIRECTED BY THE ENGINEER.

THE COST OF FURNISHING, ERECTING, MAINTAINING, AND REMOVING THE REQUIRED SIGNS SHALL BE INCLUDED IN THE CONTRACT.

REVISIONS

REDRAWN	2-15-89
REVISED	4-6-93
REVISED	3-27-08
REVIEWED	5-17-13

STD. 9-39

MODEL: A_275c-11_Details
FILE NAME: P:\Information\Illinois\DOT\Office\District 9\Projects\78898\CADD\Drawings\DOT\Drawings\78898-04.dwg

USER NAME = whitode	DESIGNED -	REVISED -
PLOT SCALE = 5.0000' / in.	CHECKED -	REVISED -
PLOT DATE = 6/28/2021	DATE -	REVISED -

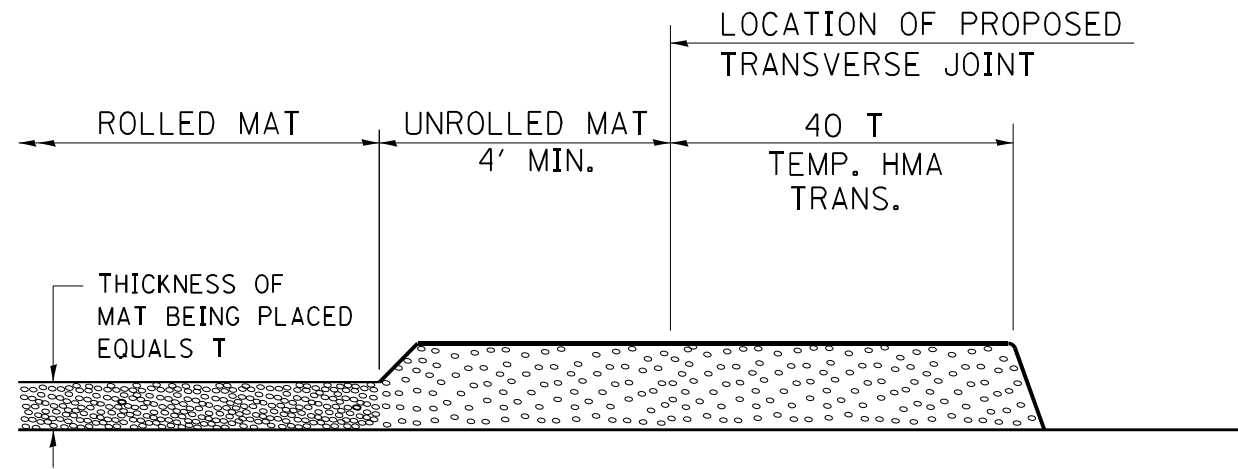
STATE OF ILLINOIS
DEPARTMENT OF TRANSPORTATION

DETAILS: SHORT TERM PAVEMENT MARKING, UNEVEN LANES SIGN,
TEMPORARY RAMP AT SIDEROADS, ROUGH GROOVED SURFACE SIGN

SCALE: SHEET OF SHEETS STA. TO STA.

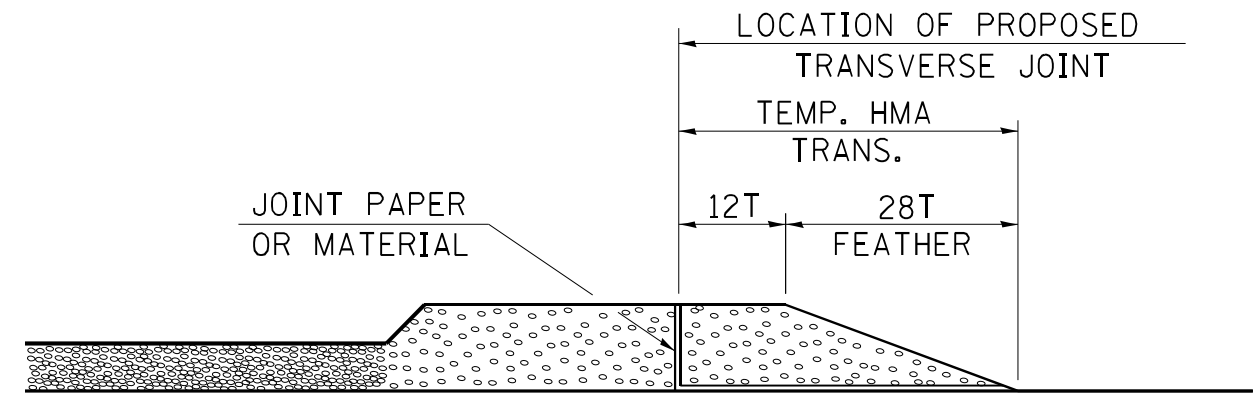
F.A.P. RTE.	SECTION	COUNTY	TOTAL SHEETS	SHEET NO.
845	112RS-5	FRANKLIN	31	30
			CONTRACT NO. 78898	
		ILLINOIS	FED. AID PROJECT	

TEMPORARY HOT-MIX ASPHALT TRANSITIONS



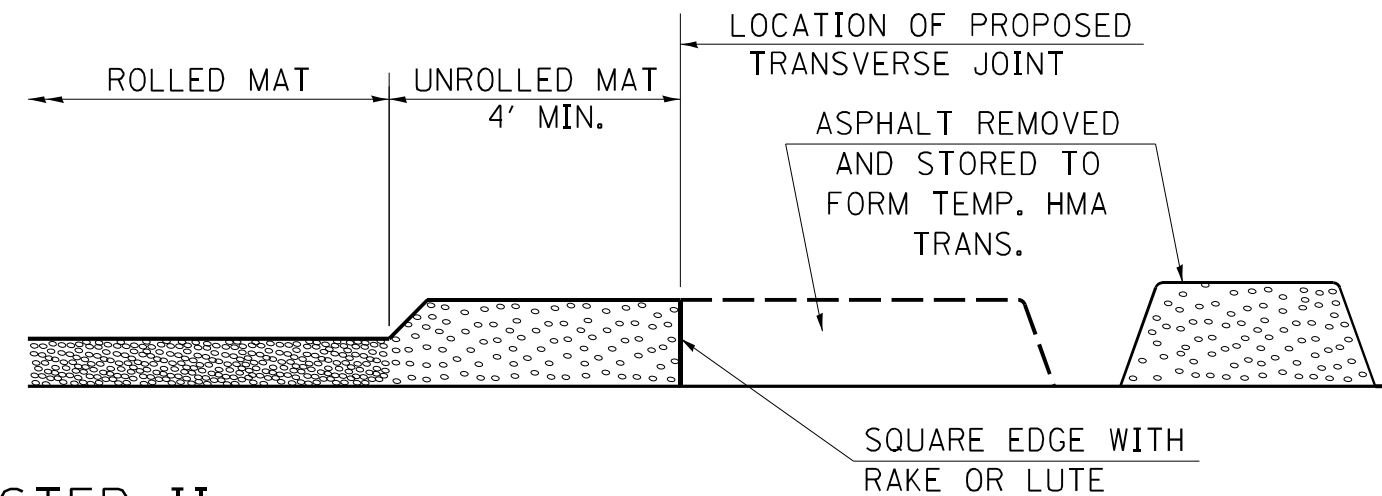
STEP I

1. PLACE HOT-MIX ASPHALT MAT, LENGTH 40 TIMES THE THICKNESS OF THE MAT BEING PLACED PAST THE PROPOSED TRANSVERSE JOINT LOCATION USING NORMAL OPERATING PROCEDURES.
2. EXTREME CARE SHOULD BE TAKEN TO MAINTAIN ENOUGH MATERIAL IN FRONT OF THE SCREED TO MAINTAIN REQUIRED PAVING DEPTH.



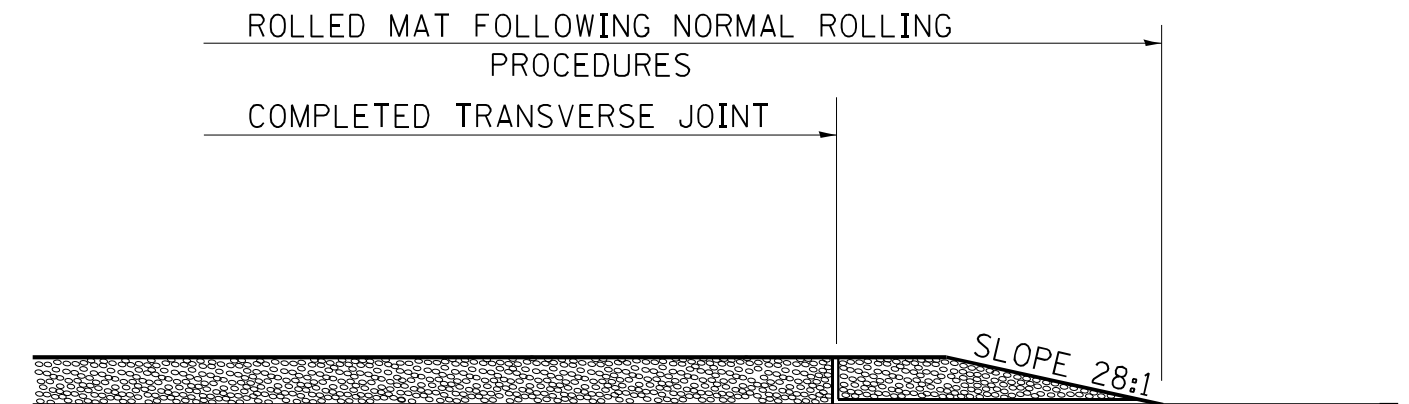
STEP III

1. JOINT PAPER OR OTHER PRESELECTED JOINT MATERIAL IS THEN PLACED IN THE CLEARED AREA AND THE EXCESS ASPHALT USED TO HAND FORM A TRANSITION TO THE DIMENSIONS SHOWN ABOVE.
2. NOTE THAT IN CONSTRUCTING THE TRANSITION, THE MAT DEPTH IS CONTINUED AS PART OF THE TRANSITION BEFORE FORMING THE FEATHER.



STEP II

1. MOVE THE PAVER OUT OF THE WAY AND REMOVE THE ASPHALT FROM THE AREA OF THE PROPOSED TEMPORARY HOT-MIX ASPHALT TRANSITION.
2. SQUARE UP THE END OF THE MAT WITH A RAKE OR LUTE.
3. NOTE THAT THE MAT WITHIN 4' OF THE END OF JOINT IS NOT TO BE ROLLED AT THIS TIME.



STEP IV

1. COMPLETE TEMPORARY TRANSITION BY ROLLING.
2. TO RESUME PAVING, AT THE JOINT, REMOVE TEMPORARY TRANSITION AND DISPOSE OF THE MATERIAL ACCORDING TO ART. 202.03 OF THE STD. SPECS. (COST INCLUDED IN THE CONTRACT).
3. CONSTRUCTING THE TEMPORARY TRANSITIONS WILL NOT BE PAID FOR SEPARATELY IN ACCORDANCE WITH ARTICLE 406.14 OF THE STANDARD SPECIFICATIONS.

STD. 9-26

REVISIONS

REDRAWN	2-15-89
REVISED	8-16-94
REVISED	01-09-07
RESIZED	05-8-08
REVISED	05-16-13

MODEL: A_275c-1h_Details
FILE NAME: P:\Information\Illinois\DOT\Documents\DOT Office\District 9\Project\78898\CADD\Drawings\DOT 78898-Details.dgn

USER NAME = whitode	DESIGNED -	REVISED -
PLOT SCALE = 5.0000' / in.	DRAWN -	REVISED -
PLOT DATE = 6/28/2021	CHECKED -	REVISED -
	DATE -	REVISED -

STATE OF ILLINOIS
DEPARTMENT OF TRANSPORTATION

DETAILS: TEMPORARY HOT-MIX ASPHALT TRANSITIONS

SCALE: SHEET OF SHEETS STA. TO STA.

F.A.P. RTE.	SECTION	COUNTY	TOTAL SHEETS	SHEET NO.
845	112RS-5	FRANKLIN	31	31
CONTRACT NO. 78898				
ILLINOIS FED. AID PROJECT				