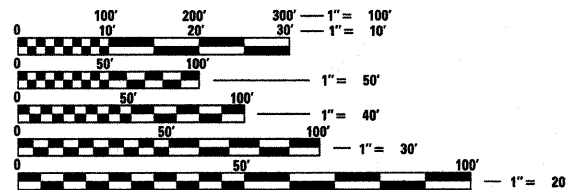


INDEX OF SHEETS

SHEET NO.	SHEET TITLE
1	COVER SHEET
2	SUMMARY OF QUANTITIES, STANDARDS, AND GENERAL NOTES
3	SCHEDULE OF QUANTITIES
4	TYPICAL SECTIONS
5	FORT KASKASKIA SITE ENTERANCE SIGN
6	FORT KASKASKIA PLAYGROUND AREA SPEED BUMP
7	FORT KASKASKIA CAMPGROUND ENTRANCE
8	FORT KASKASKIA CAMPGROUND
9	PIERRE MENARD EAST PARKING LOT RESTRIPIPING
10	PIERRE MENARD HOME
11-12	DETAILS
13	KASKASKIA RV PARK ELECTRICAL PLANS AND NOTES
14	PIERRE MENARD HOME ELECTRICAL PLANS AND NOTES
15	ELECTRICAL DETAILS AND NOTES
16	ELECTRICAL DETAILS

LEGEND

- EXISTING GUARD RAIL
- EXISTING ABOVE GROUND SPLICE BOX
- EXISTING POWER POLE
- ⊕ EXISTING CONIFEROUS TREE
- ⊙ EXISTING DECIDUOUS TREE
- EXISTING CLEAN OUT
- ⊥ EXISTING SIGN
- EXISTING WATER VALVE



FULL SIZE PLANS HAVE BEEN PREPARED USING STANDARD ENGINEERING SCALES. REDUCED SIZED PLANS WILL NOT CONFORM TO STANDARD SCALES. IN MAKING MEASUREMENTS ON REDUCED PLANS, THE ABOVE SCALES MAY BE USED.

J.U.L.I.E.
JOINT UTILITY LOCATION INFORMATION FOR EXCAVATION
1-800-892-0123
OR 811

**PROJECT ENGINEER
PROJECT MANAGER**

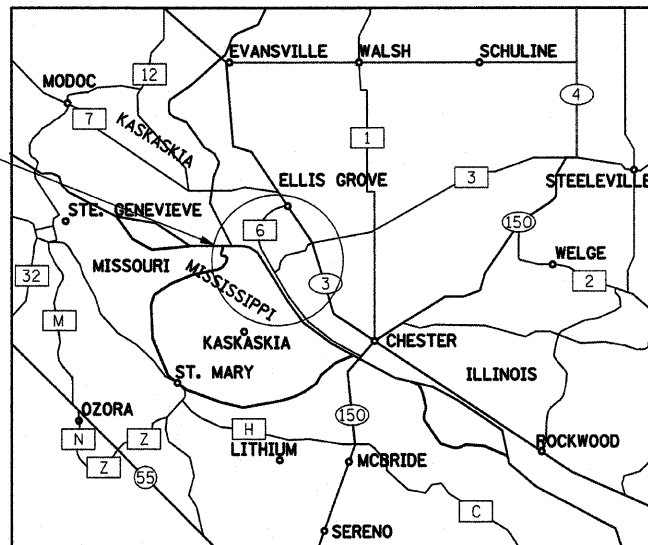
CONTRACT NO. 46003

STATE OF ILLINOIS
DEPARTMENT OF TRANSPORTATION
DIVISION OF HIGHWAYS

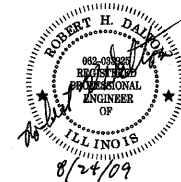
**PROPOSED
HIGHWAY PLANS**

**IDOT /IHPA STATEWIDE
PIERRE MENARD/FORT KASKASKIA STATE HISTORIC SITES
SIDEWALK AND CAMPGROUND
RANDOLPH COUNTY
C-30-046-08**

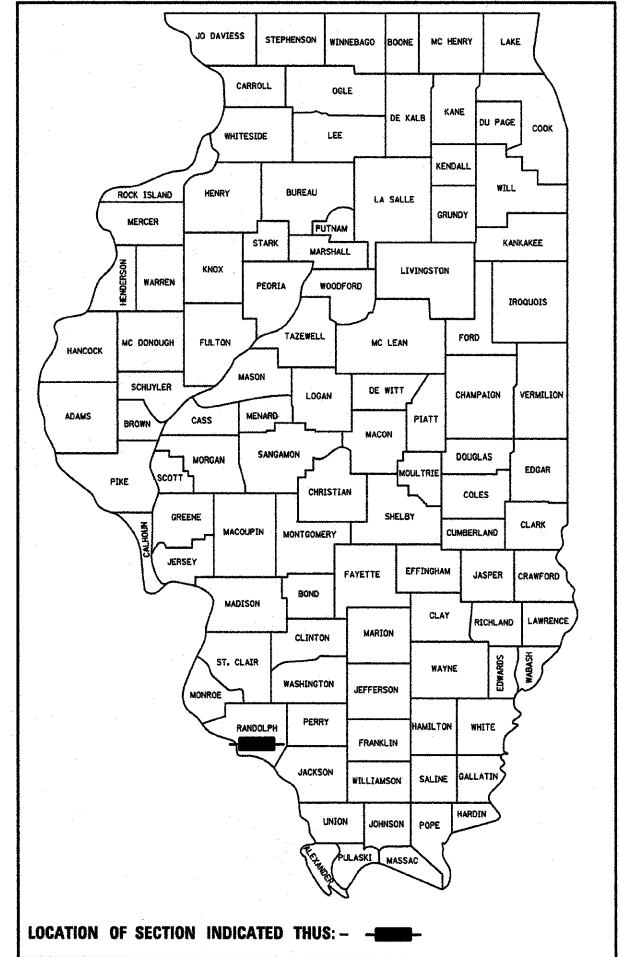
PROPOSED IMPROVEMENTS



PROFESSIONAL SEALS
PROFESSIONAL SEAL OF ROBERT H. DALTON P.E.
COVERS THE FOLLOWING SHEETS: 1-12
PROFESSIONAL SEAL OF DAVID URY P.E.
COVERS THE FOLLOWING SHEETS: 13-16



F.A. RTE.	SECTION	COUNTY	TOTAL SHEETS	SHEET NO.
		RANDOLPH	16	1
FED. ROAD DIST. NO.	ILLINOIS	CONTRACT NO. 46003		



STATE OF ILLINOIS
DEPARTMENT OF TRANSPORTATION
DIVISION OF HIGHWAYS

SUBMITTED August 25, 2009
Eric E. Harms
DEPUTY DIRECTOR OF HIGHWAYS, REGION ENGINEER

August 14, 2009
Charles J. Ingersoll
ENGINEER OF DESIGN AND ENVIRONMENT

August 14, 2009
Christine M. Reed
DIRECTOR OF HIGHWAYS, CHIEF ENGINEER

**PRINTED BY THE AUTHORITY
OF THE STATE OF ILLINOIS**