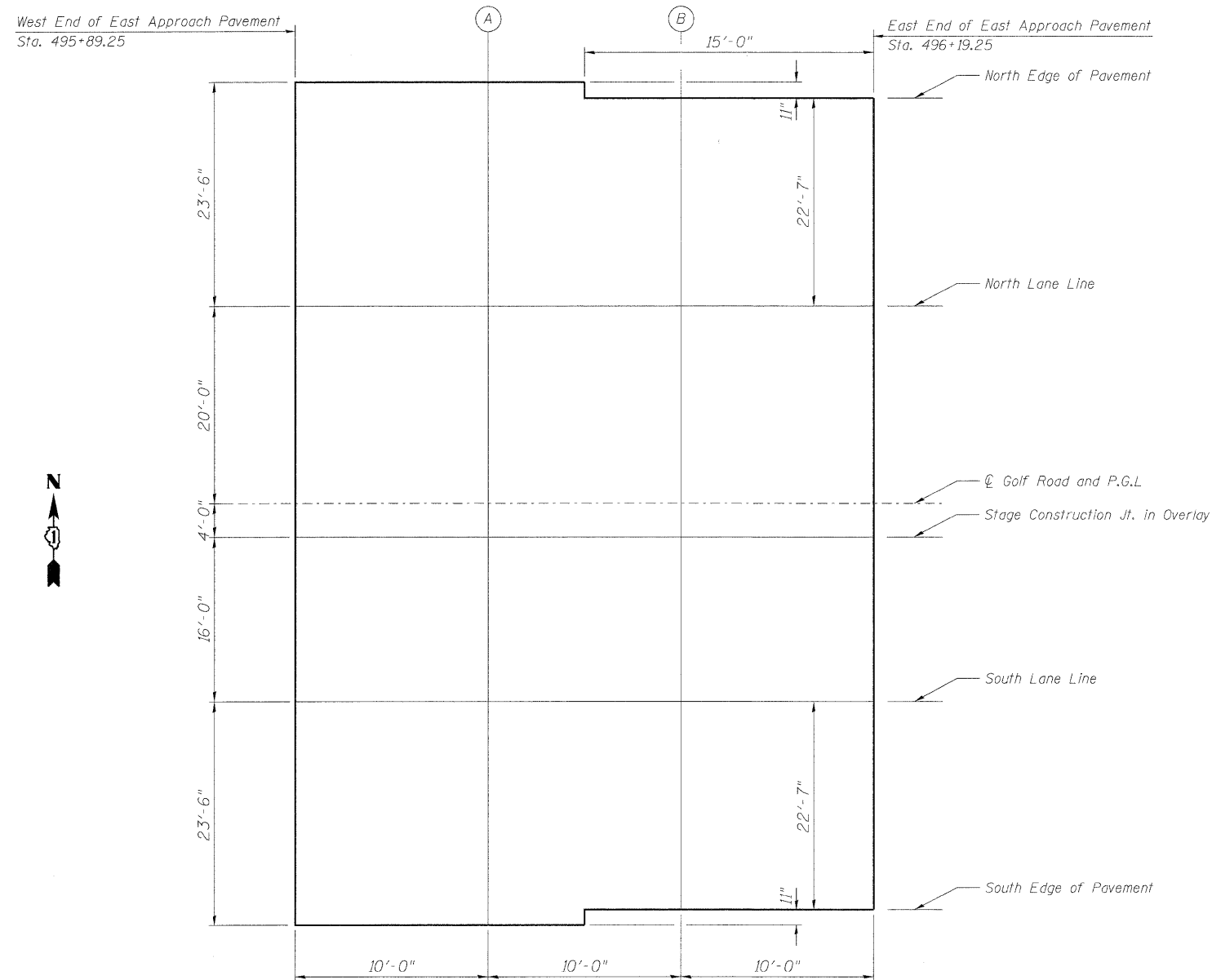


STATE OF ILLINOIS
DEPARTMENT OF TRANSPORTATION



PLAN

North Edge of Pavement

Location	Station	Offset	Theoretical Grade Elevations
W. End. of E. Appr Pvmf	495+89.25	-43.50'	98.80
A	495+99.25	-43.50'	98.82
B	496+09.25	-42.58'	98.85
E. End. of E. Appr Pvmf	496+19.25	-42.58'	98.86

Stage Construction Joint in Overlay

Location	Station	Offset	Theoretical Grade Elevations
W. End. of E. Appr Pvmf	495+89.25	4.00'	99.54
A	495+99.25	4.00'	99.56
B	496+09.25	4.00'	99.57
E. End. of E. Appr Pvmf	496+19.25	4.00'	99.58

North Lane Line

Location	Station	Offset	Theoretical Grade Elevations
W. End. of E. Appr Pvmf	495+89.25	-20.00'	99.29
A	495+99.25	-20.00'	99.31
B	496+09.25	-20.00'	99.32
E. End. of E. Appr Pvmf	496+19.25	-20.00'	99.33

South Lane Line

Location	Station	Offset	Theoretical Grade Elevations
W. End. of E. Appr Pvmf	495+89.25	20.00'	99.29
A	495+99.25	20.00'	99.31
B	496+09.25	20.00'	99.32
E. End. of E. Appr Pvmf	496+19.25	20.00'	99.33

☐ Golf Road and P.G.L.

Location	Station	Offset	Theoretical Grade Elevations
W. End. of E. Appr Pvmf	495+89.25	0.00'	99.60
A	495+99.25	0.00'	99.62
B	496+09.25	0.00'	99.63
E. End. of E. Appr Pvmf	496+19.25	0.00'	99.64

South Edge of Pavement

Location	Station	Offset	Theoretical Grade Elevations
W. End. of E. Appr Pvmf	495+89.25	43.50'	98.80
A	495+99.25	43.50'	98.82
B	496+09.25	42.58'	98.85
E. End. of E. Appr Pvmf	496+19.25	42.58'	98.86

DESIGNED	SLV
CHECKED	MJM
DRAWN	SLV
CHECKED	MJM

LONCO, INC.
CONSULTING ENGINEERS
1560 WALL ST., SUITE 222
NAPERVILLE, ILLINOIS 60563 PH: (630) 577-9100

TOP OF EAST
APPROACH SLAB ELEVATIONS
STRUCTURE NO. 016-2514

SHEET NO. S6	F.A.U. RTE.	SECTION	COUNTY	TOTAL SHEETS	SHEET NO.
OF S15 SHEETS	1320	581 B-1	COOK	33	17
D-91-288-09			CONTRACT NO. 60F91		
FED. ROAD DIST. NO. ILLINOIS FED. AID PROJECT					