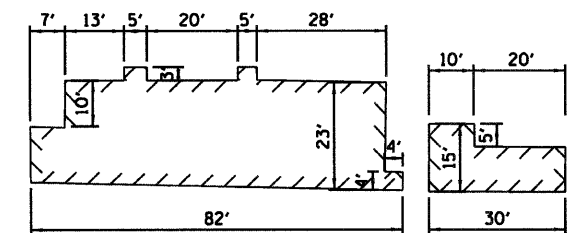
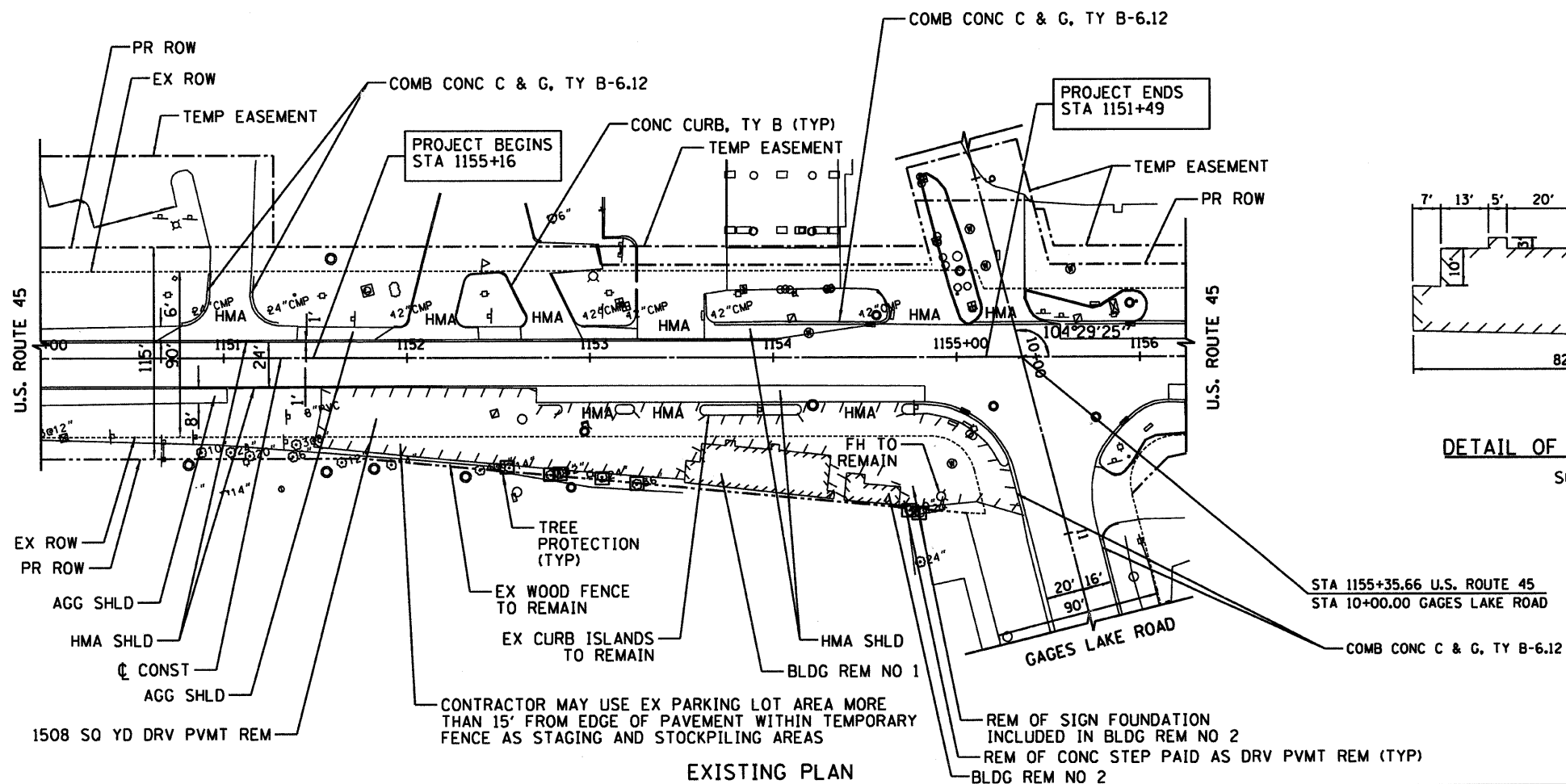


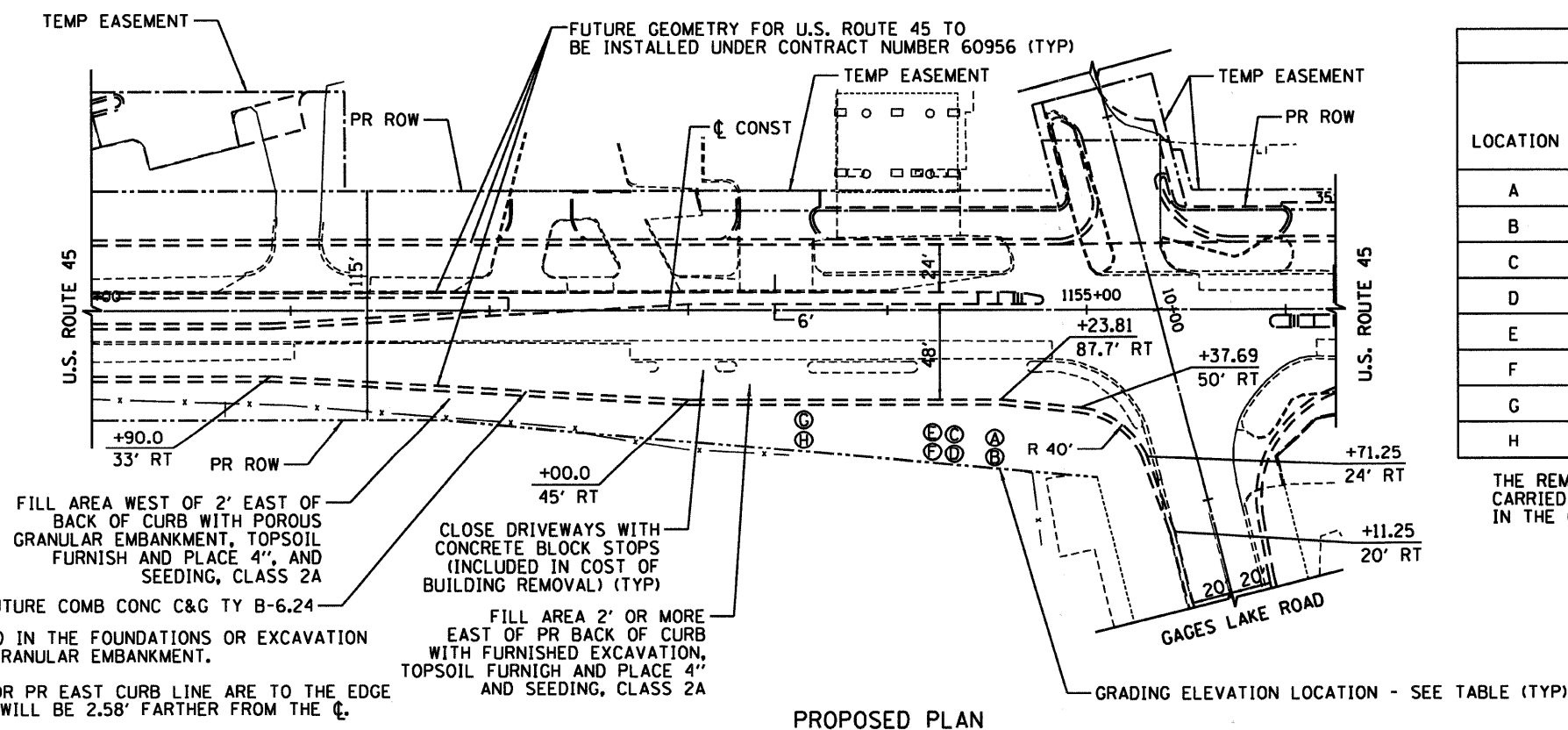
RTE	SECTION	COUNTY	TOTAL SHEETS	SHEET NO
344	47 DM	LAKE	8	4
STA. 1151+49		TO STA. 1155+16		
FED. ROAD DIST. NO. 7 ILLINOIS FED. AID PROJECT				
CONTRACT NO. 60F96				



DETAIL OF BUILDING DIMENSIONS
SCALE 1"=20'

NOTE: REMOVAL OF ALL WOOD FENCE ENCLOSURES FOR TRASH AND STORAGE AREAS SHALL BE CONSIDERED INCLUDED IN THE COST OF BUILDING REMOVAL

EXISTING PLAN



GRADING/EXCAVATION ELEVATIONS				
LOCATION	STATION	OFFSET	FINISHED ELEVATION	ELEVATION OF BOTTOM OF BUILDING REMOVAL
A	1154+69.6	66.1' RT	777.25	776.25
B	1154+68.3	80.9' RT	777.28	776.28
C	1154+39.8	63.5' RT	776.59	774.90
D	1154+38.4	78.2' RT	776.91	775.91
E	1154+31.2	53.8' RT	776.59	774.90
F	1154+28.7	77.0' RT	776.64	775.64
G	1153+54.5	46.4' RT	776.30	772.75
H	1153+51.3	68.5' RT	775.95	774.95

THE REMOVAL OF THE BUILDINGS, WALLS, AND FOUNDATIONS SHALL BE CARRIED OUT TO THE ELEVATIONS SHOWN IN THE TABLE ABOVE (INCLUDED IN THE COST OF THE BUILDING REMOVAL).

- NOTES:
- ALL HOLES CREATED OR UNCOVERED IN THE FOUNDATIONS OR EXCAVATION SHALL BE PLUGGED WITH POROUS GRANULAR EMBANKMENT.
 - STATIONS AND OFFSETS LISTED FOR PR EAST CURB LINE ARE TO THE EDGE OF PAVEMENT. THE BACK OF CURB WILL BE 2.58' FARTHER FROM THE CL.

REVISIONS	
NAME	DATE

ILLINOIS DEPARTMENT OF TRANSPORTATION

PLAN

U.S. ROUTE 45
STATION 1151+49 TO STATION 1155+16

HORIZ. 40 0 40
SCALE IN FEET

DATE 8/5/09
DRAWN BY AJP
CHECKED BY MJL