

F.A.P. RTE. 348	SECTION 3271 A-RS-3	COUNTY COOK	TOTAL SHEETS 29	SHEET NO. 1
FED. ROAD DIST. NO. 1	ILLINOIS	CONTRACT NO. 60H56		

STATE OF ILLINOIS
DEPARTMENT OF TRANSPORTATION
DIVISION OF HIGHWAYS

PROPOSED
HIGHWAY PLANS

F.A.P. RTE. 348 / IL. RTE. 43 / U.S. RTE. 14 (WAUKEGAN ROAD)
SECTION: 3271 A-RS-3

US 14 / IL 58 TO NORTH OF US 14 AND
SOUTH OF US 14 TO MILWAUKEE AVE.
RESURFACING (3P)
PROJECT: NHF-0348(044)
COOK COUNTY
C-91-754-09

TOWNSHIP
R. 8 E.

FOR INDEX OF SHEETS, SEE SHEET NO. 2

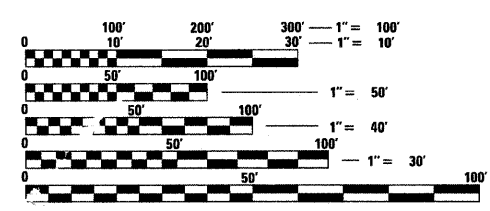
DESIGN DESIGNATION:
SPEED LIMIT : 35 M.P.H.
2007 ADT = 28,000

PROJECT LOCATED IN THE
VILLAGE OF MORTON GROVE
AND THE VILLAGE OF NILES

D-91-754-09



LOCATION OF SECTION INDICATED T.I.US: -



FULL SIZE PLANS HAVE BEEN PREPARED USING STANDARD ENGINEERING SCALES. REDUCED SIZED PLANS WILL NOT CONFORM TO STANDARD SCALES. IN MAKING MEASUREMENTS ON REDUCED PLANS, THE ABOVE SCALES MAY BE USED.

J.U.L.I.E.
JOINT UTILITY LOCATING INFORMATION FOR EXCAVATORS
1-800-892-0123

DISTRICT ONE - PLAN PREP ENGINEER:
KEN ENG (847) 705-4247

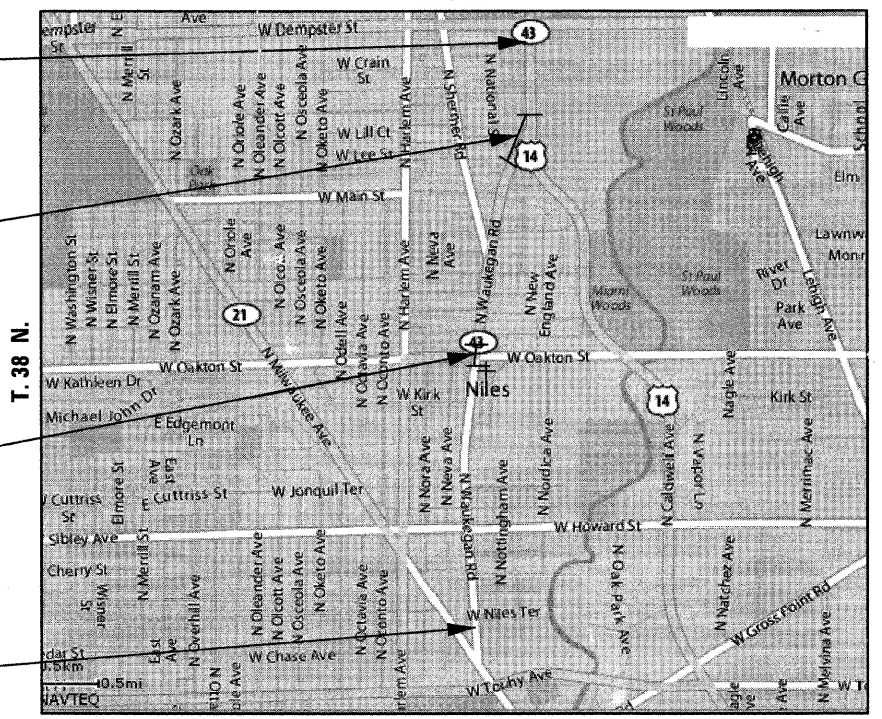
CONTRACT NO. 60H56

PROJECT ENDS
STA. 107 + 38

PAVING OMISSION
STA. 91 + 75 TO
STA. 97 + 65

PAVING OMISSION
STA. 54 + 74 TO
STA. 57 + 25

PROJECT BEGINS
STA. 9 + 92



GROSS LENGTH OF PROJECT = 9,746 FEET = 1.846 MILES
NET LENGTH OF PROJECT = 8,905 FEET = 1.687 MILES



STATE OF ILLINOIS
DEPARTMENT OF TRANSPORTATION
DIVISION OF HIGHWAYS

SUBMITTED JUNE 29, 2009

Diana M. O'Keefe
DEPUTY DIRECTOR OF HIGHWAYS, REGION ONE ENGINEER

August 14, 2009
Charles J. Ingersoll
ENGINEER OF DESIGN AND ENVIRONMENT

August 14, 2009
Christine M. Reed
DIRECTOR OF HIGHWAYS, CHIEF ENGINEER



Birinder S. Sachdeva June 26, 2009
BIRINDER S. SACHDEVA, P.E. DATE
EXPIRES: 11-30-2009

CR & A
CHRISTIAN-ROGE & ASSOCIATES, INC.
ENGINEERS - PLANNERS - SURVEYORS
211 W. WACKER DRIVE CHICAGO, IL. 60606
TELEPHONE: 312-372-2023

PRINTED BY THE AUTHORITY
OF THE STATE OF ILLINOIS