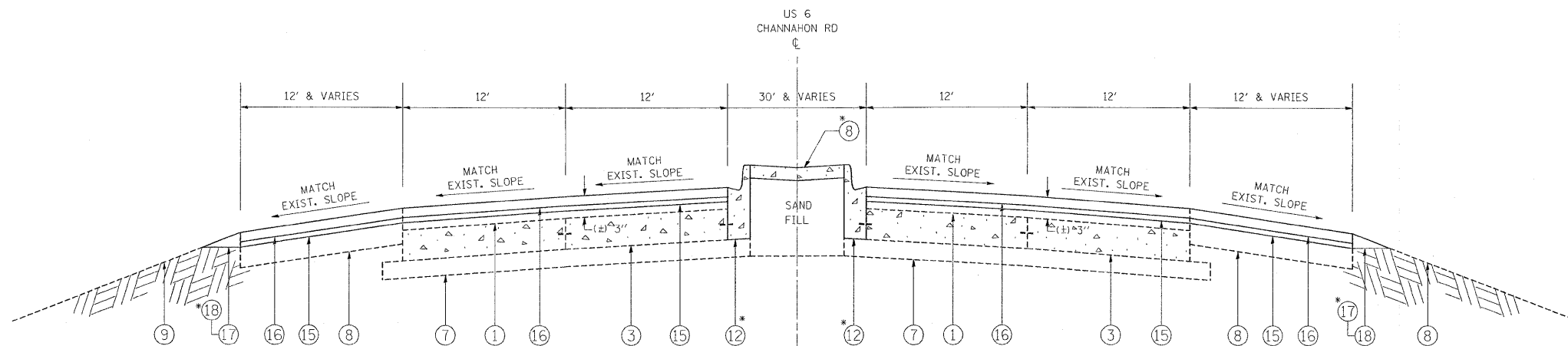


US 6  
EXISTING TYPICAL SECTION  
STA. 103+69 TO STA. 167+01  
STA. 177+12 TO STA. 180+73



US 6  
PROPOSED TYPICAL SECTION  
STA. 103+69 TO STA. 167+01  
STA. 177+12 TO STA. 180+73

LEGEND

- ① EXISTING HMA SURFACE COURSE, (±) 3"
- ② EXISTING HMA SURFACE COURSE, (±) 6-1/2"
- ③ EXISTING PCC PAVEMENT, (±) 9"
- ④ EXISTING PCC PAVEMENT, (9'-7"-9')
- ⑤ EXISTING PCC MEDIAN SURFACE, 4"
- ⑥ EXISTING HMA BASE COURSE, (±) 10-1/2"
- ⑦ EXISTING SUB-BASE GRANULAR MATERIAL, TYPE B, 4"
- ⑧ EXISTING HMA SHOULDER, (±) 8"
- ⑨ EXISTING AGGREGATE SHOULDER, TYPE B, 8"
- ⑩ EXISTING STABILIZED DRIVEWAY, 10"
- ⑪ EXISTING COMB. CONC. CURB & GUTTER, TYPE B-6.24
- ⑫ PROPOSED COMB. CONC. C&G REMOVAL AND REPLACEMENT
- ⑬ PROPOSED PCC MEDIAN SURFACE, 4"
- ⑭ PROPOSED HMA SURFACE REMOVAL, 2-1/4"
- ⑮ PROPOSED POLYMERIZED LEVELING BINDER (MM), IL-4.75, NS0, 3/4"
- ⑯ PROPOSED HMA SURFACE COURSE, MIX "D", N70, 1-1/2"
- ⑰ PROPOSED AGGREGATE WEDGE SHOULDER, TYPE B
- ⑱ PROPOSED GRADING AND SHAPING OF SHOULDERS

NOTE:

\* LOCATIONS TO BE DETERMINED IN THE FIELD BY THE ENGINEER

" THE CONTRACTOR SHALL PATCH FIRST BEFORE MILLING".  
(STA. 97+60 TO STA. 167+01)  
(STA. 177+12 TO STA. 180+73)  
(STA. 222+56 TO STA. 273+54)

" THE CONTRACTOR SHALL MILL FIRST PRIOR TO PATCHING".  
(STA. 167+01 TO STA. 177+12)  
(STA. 180+73 TO STA. 212+50)  
(STA. 221+06 TO STA. 222+56)  
(STA. 212+50 TO STA. 221+06)

FILE NAME =	USER NAME = galbannb	DESIGNED -	REVISED -	<b>STATE OF ILLINOIS DEPARTMENT OF TRANSPORTATION</b>	<b>US 6 (CHANNAHON RD/RAILROAD ST.) EXISTING AND PROPOSED TYPICAL SECTIONS</b>	* FAP 856/FAU 318				
et:\p\work\p\work\GALBANNB\0140162\017309\shd\plan.dgn		DRAWN -	REVISED -			F.A. RTE.	SECTION	COUNTY	TOTAL SHEETS	SHEET NO.
PLOT SCALE = 50.0000' / IN.		CHECKED -	REVISED -			•	1-D-1-RS-3	WILL	34	6
PLOT DATE = 6/26/2009		DATE -	REVISED -			CONTRACT NO. 60H61				ILLINOIS FED. AID PROJECT
					SCALE:	SHEET NO.	OF	SHEETS	STA.	TO STA.