

**CONTRACT NO. 60119**  
**D-91-865-09**

STATE OF ILLINOIS  
DEPARTMENT OF TRANSPORTATION  
DIVISION OF HIGHWAYS

**PROPOSED  
HIGHWAY PLANS**

**F.A.U. 2843 - DIXIE HIGHWAY  
OVER BUTTERFIELD CREEK  
BEAMS AND BEARINGS FABRICATION  
SECTION 3249B-F  
COOK COUNTY  
C-91-865-09  
PROJECT NO. BRM-2843(008)**



**RME** Rubinos & Mesia Engineers, Inc.  
200 S. Michigan Ave, Suite 1500 Chicago IL 60604-2482  
T> 312 870 6600 F> 312 663 1473

STATE OF ILLINOIS  
DEPARTMENT OF TRANSPORTATION  
DIVISION OF HIGHWAYS

SUBMITTED June 24, 2009  
Dean O'Neil  
DEPUTY DIRECTOR OF HIGHWAYS, REGION ENGINEER

August 14, 2009  
Charles J. Ingerson  
ENGINEER OF DESIGN AND ENVIRONMENT

August 14, 2009  
Christine M. Reed  
DIRECTOR OF HIGHWAYS, CHIEF ENGINEER

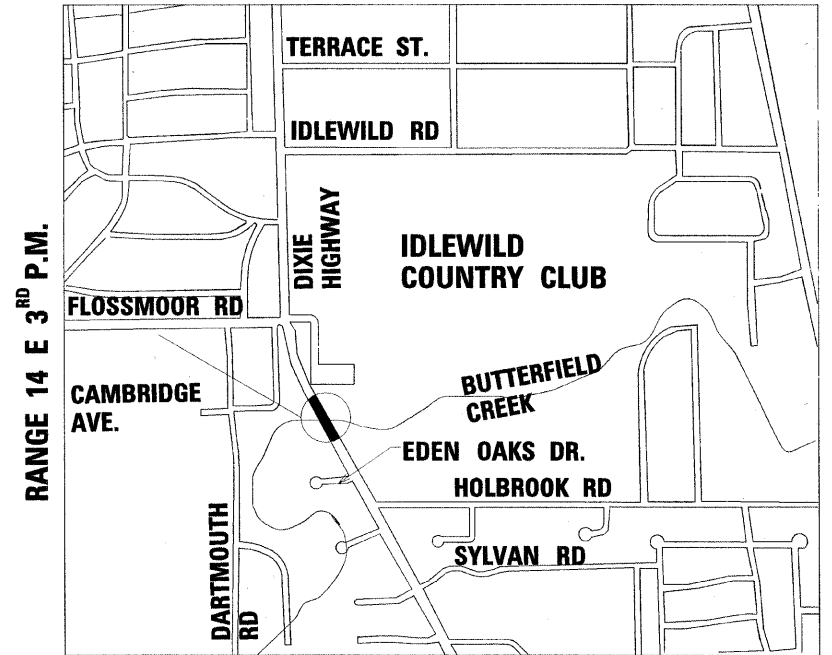
FOR INDEX OF SHEETS, SEE SHEET NO. 2

PROJECT IS LOCATED IN:  
VILLAGE OF FLOSSMOOR

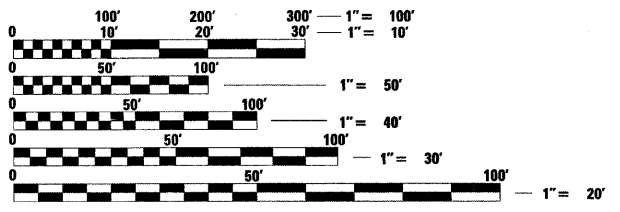
PROJECT DESCRIPTION:  
BEAM AND BEARINGS FABRICATION

DESIGN DESIGNATION:  
2160(15) URBAN ARTERIAL 1.59 (FD-20)  
TRAFFIC DATA  
DIXIE HIGHWAY  
DESIGN SPEED = 45 MPH  
POSTED SPEED = 40 MPH  
DHV 14,000 (2000)  
ADT 21,572 (2020)

1 PROPOSED BEAM AND BEARINGS FABRICATION  
1 DIXIE HIGHWAY OVER BUTTERFIELD CREEK BRIDGE REPLACEMENT  
SN 016-7946 (PROPOSED)  
(EXISTING SN 016-0775)  
STA. 77+72.17 TO STA. 79+37.83



BLOOM TOWNSHIP T. 35 N  
LOCATION MAP  
SCALE: 1" = 750'  
GROSS & NET LENGTH OF PROJECT = 165 FEET (0.03 MILE)

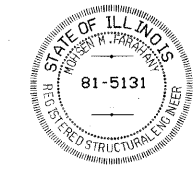


FULL SIZE PLANS HAVE BEEN PREPARED USING STANDARD ENGINEERING SCALES. REDUCED SIZED PLANS WILL NOT CONFORM TO STANDARD SCALES. IN MAKING MEASUREMENTS ON REDUCED PLANS, THE ABOVE SCALES MAY BE USED.

J.v.L.I.E.  
JOINT UTILITY LOCATION INFORMATION FOR EXCAVATION  
1-800-892-0123

CONTRACT NO. 60119

DESIGN /CONSULTANT SERVICES PROJECT MANAGER - BRIAN KUTTAB (847)705-4431



Mohsen Farahany  
Licensed Structural Engineer  
State of Illinois  
Lic. No. 81-5131  
Expires: 11-30-2010  
Pages: 1-20  
*Mohsen Farahany*

**PRINTED BY THE AUTHORITY  
OF THE STATE OF ILLINOIS**