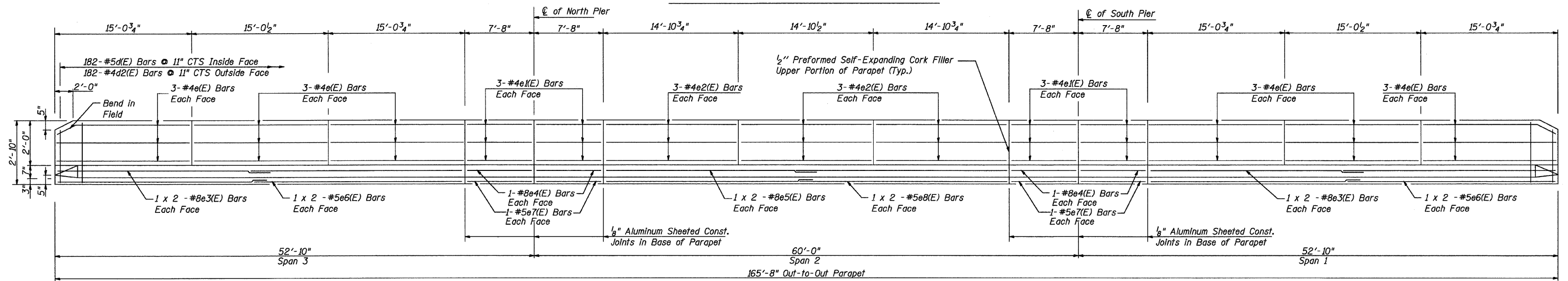
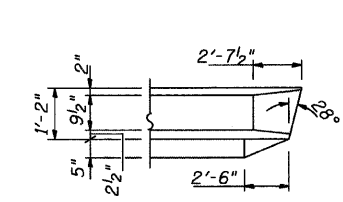


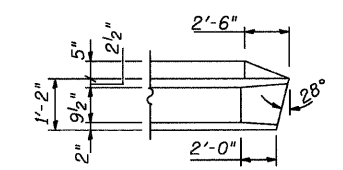
INSIDE ELEVATION OF WEST PARAPET



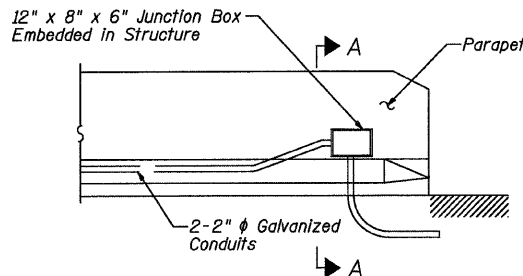
INSIDE ELEVATION OF EAST PARAPET



PARAPET DETAIL 1



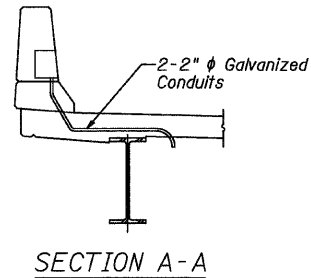
PARAPET DETAIL 2



JUNCTION BOX EMBEDDED IN PARAPET

Notes:

1. The Junction Box Shall Only be Installed when Indicated on the Plans or as Directed by the Engineer to Facilitate the Installation of Unit Duct into the Conduit Embedded in the Parapet.
2. The Junction Box Shall be Paid for at the Unit Price for Junction Box, Embedded in Structure, 12" x 8" x 6"
3. The Exact Location of the Junction Box Shall be Determined by the Engineer.



SECTION A-A

Notes: See Sheet #10 of 22 for Superstructure Details and Bill of Material.

Reinforcement bars designated (E) shall be epoxy coated.

Bars Indicated thus 1 x 2-#8 etc. Indicates 1 Line of Bars With 2 Lengths per Line.

Minimum Bar Lap For #4 Bar - 1'-8".

Minimum Bar Lap For #5 Bar - 2'-2".

Minimum Bar Lap For #8 Bar - 4'-6".

For Deck Diaphragm, See Sit #8 of 22.

REVISIONS	
NAME	DATE

PARAPET ELEVATION

DIXIE HIGHWAY OVER
BUTTERFIELD CREEK
F.A.U. ROUTE 2843 SECTION 3249B-F
STA. 78+55.00
COOK COUNTY
STRUCTURE NUMBER 016-7946 - PROPOSED
016-0775 - EXISTING

SCALE: NOT-TO-SCALE
DATE 4-27-09

DRAWN BY TH
DESIGNED BY TH
CHECKED BY MF

