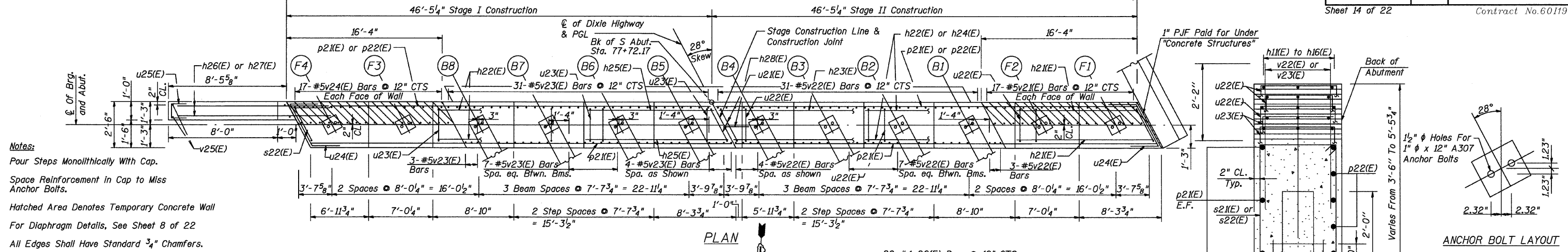


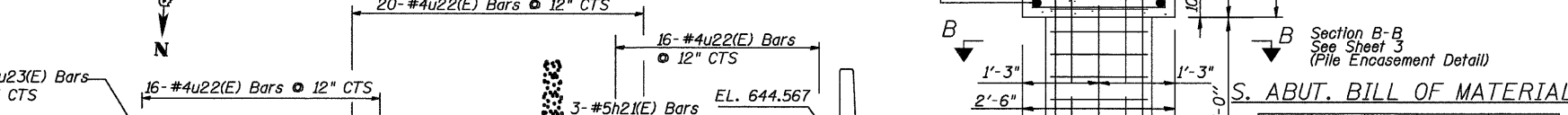
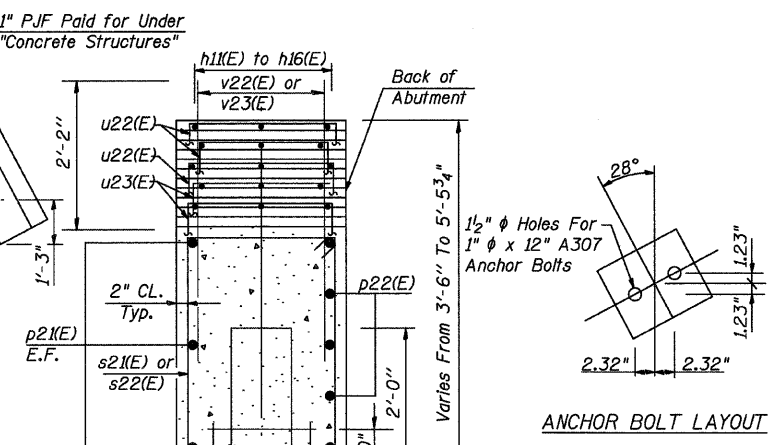
STATE OF ILLINOIS
DEPARTMENT OF TRANSPORTATION

F.A.U. RTE.	SECTION	COUNTY	TOTAL SHEETS	SHEET NO.
2843	3249B-F	COOK	22	16
FED. ROAD DIST. NO.	ILLINOIS	FED. AID PROJECT		
			Sheet 14 of 22 Contract No. 60119	

92'-10 1/2" Out to Out South Abutment

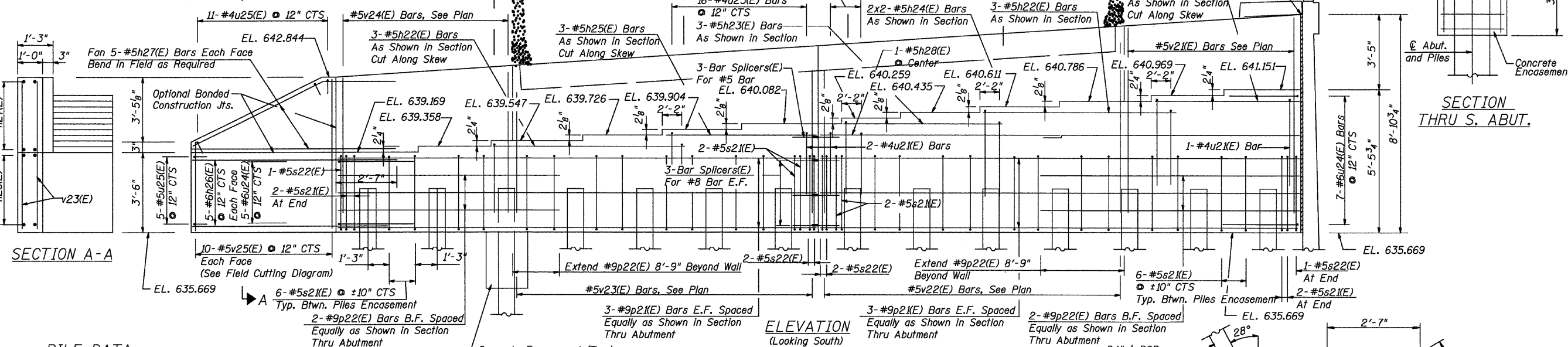


Notes:
 Pour Steps Monolithically With Cap.
 Space Reinforcement in Cap to Miss Anchor Bolts.
 Hatched Area Denotes Temporary Concrete Wall
 For Diaphragm Details, See Sheet 8 of 22
 All Edges Shall Have Standard 3/4" Chamfers.
 Bars Indicated Thus 2x2-#5 etc. Indicates 2 Lines of Bars With 2 Lengths Per Line.
 Apply Concrete Sealer to all exposed concrete surfaces of abutment located to the outside of Beams B1 & B8.

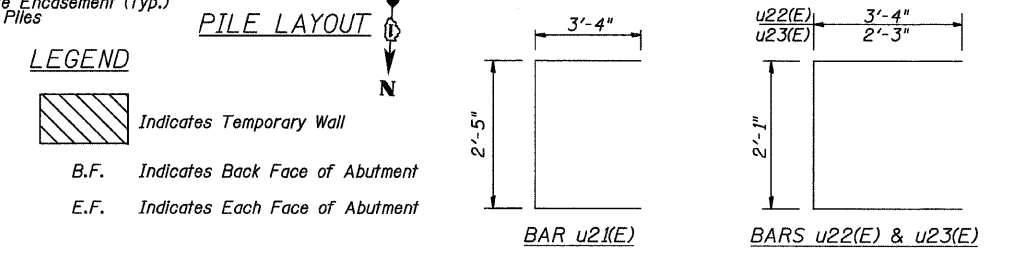
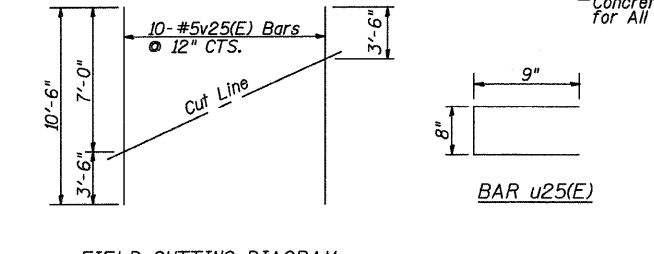
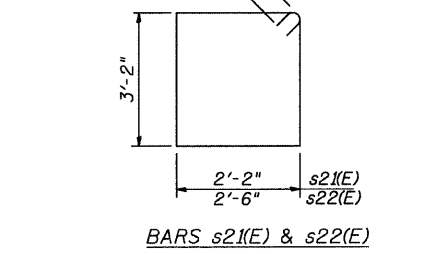
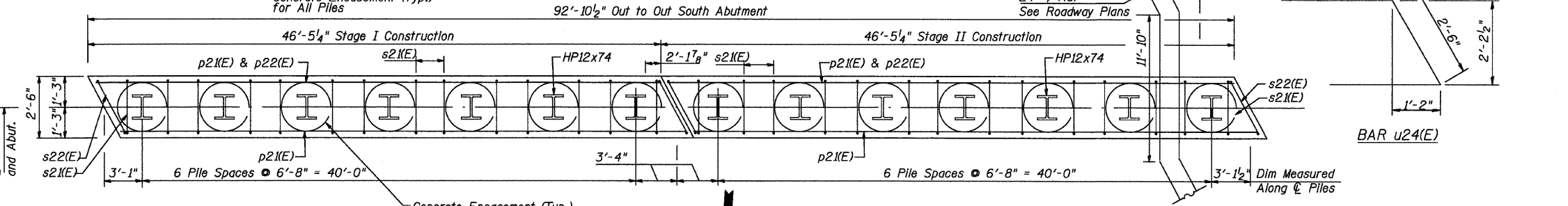


S. ABUT. BILL OF MATERIAL

Bar	No.	Size	Length	Shape
h21(E)	3	#5	15'-1"	
h22(E)	6	#5	19'-0"	
h23(E)	3	#5	16'-1"	
h24(E)	4	#5	24'-4"	
h25(E)	3	#5	15'-7"	
h26(E)	10	#6	11'-7"	
h27(E)	10	#5	11'-11"	
h28(E)	1	#5	4'-6"	
p21(E)	12	#9	46'-3"	
p22(E)	4	#9	25'-1"	
s21(E)	80	#5	11'-7"	
s22(E)	6	#5	12'-3"	
u21(E)	3	#4	9'-1"	
u22(E)	52	#4	8'-9"	
u23(E)	40	#4	6'-7"	
u24(E)	12	#6	7'-8"	
u25(E)	16	#4	2'-2"	
v21(E)	34	#5	7'-8"	
v22(E)	59	#5	6'-0"	
v23(E)	59	#5	5'-1"	
v24(E)	34	#5	6'-0"	
v25(E)	10	#5	10'-8"	
Reinforcement Bars, Epoxy Coated	Pound	6,000		
Concrete Structures	Cu. Yd.	40		
Bar Splicers	Each	9		
Furnishing Steel Piles HP12x74	Foot	600		
Driving Piles	Foot	600		
Test Pile Steel, HP12x74	Each	1		
Pile Shoes	Each	13		
Structure Excavation	Cu. Yd.	15		
Concrete Sealer	Sq. Ft.	480		
Concrete Encasement	Cu. Yd.	5		



PILE DATA
 Type: HP12x74
 Nominal Required Bearing: 589 Kips
 Allowable Resistance Available: 196 Kips
 Est. Total Length: 45'-0"
 No. Required: 13 + 1 Test Pile
 Negative Skin Friction: 30 Kips/Pile
 Provide Pile Shoes for all Piles



REVISIONS

NAME	DATE

SOUTH ABUTMENT
 DIXIE HIGHWAY OVER
 BUTTERFIELD CREEK
 F.A.U. ROUTE 2843 SECTION 3249B-F
 STA. 78+55.00
 COOK COUNTY
 STRUCTURE NUMBER 016-7946 - PROPOSED
 016-0775 - EXISTING

RME Rubinos & Mesia Engineers, Inc.

SCALE: NOT-TO-SCALE
 DATE 4-27-09
 DRAWN BY TH
 DESIGNED BY TH
 CHECKED BY MF

FOR INFORMATION ONLY

SHEET 16 OF 22.dgn 6/18/2009 0:35:49 AM