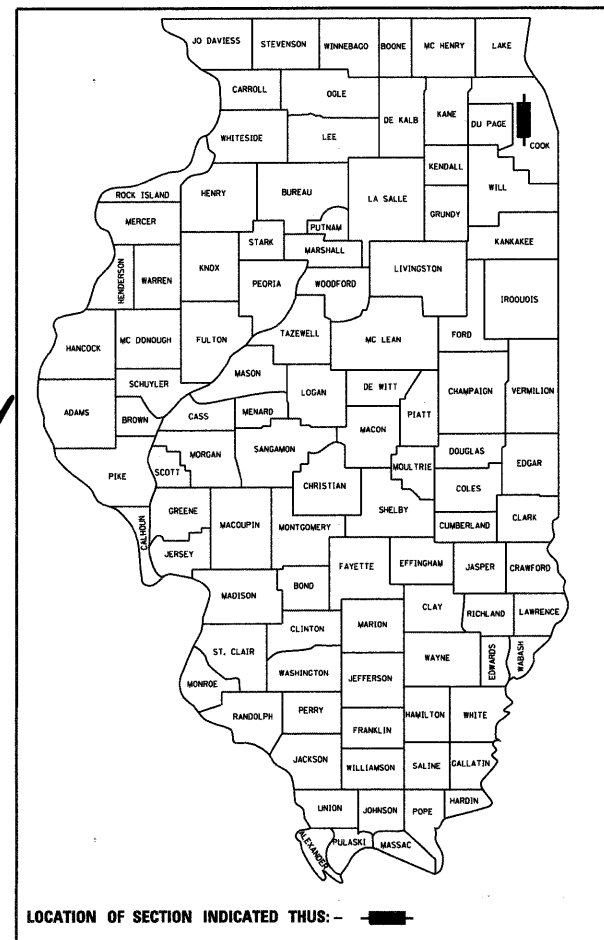


F.A. RTE.	SECTION	COUNTY	TOTAL SHEETS	SHEET NO.
330	465 (HB&VB) F	COOK	31	1

CONTRACT NO. 60121 *31+1=32

D-91-322-97



STATE OF ILLINOIS
DEPARTMENT OF TRANSPORTATION
DIVISION OF HIGHWAYS

**PROPOSED
HIGHWAY PLANS**

FAP ROUTE 330 US 12/45 (MANNHEIM ROAD)
AT FRANKLIN AVENUE & SOO RR-NOW CANADIAN PACIFIC RAILWAY
SECTION: 465 (HB & VB) F
BEAM FABRICATION
PROJECT: *BRF-0330(057)*
COOK COUNTY
C-91-868-09

FOR INDEX OF SHEETS & GENERAL NOTES, SEE SHEET NO. 3

TRAFFIC DATA
FAP 330 US12/45 (MANNHEIM ROAD)
1996 ADT=48,000
2020 ADT=60,000

POSTED SPEED LIMIT
40 MPH

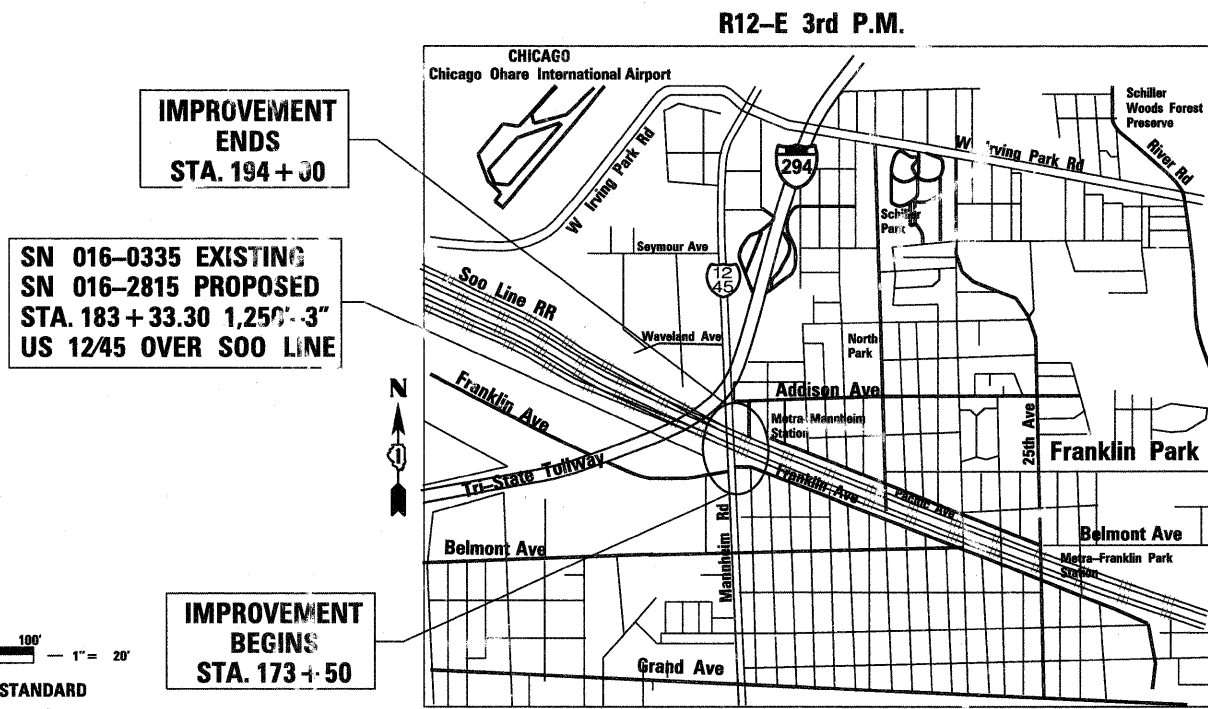
DESIGN DESIGNATION
PRINCIPAL ARTERIAL

THE PROJECT IS LOCATED IN THE VILLAGE OF FRANKLIN PARK

FAP 330 US 12/45 (MANNHEIM ROAD) OVER SOO LINE RR- & FRANKLIN AVENUE (NOW CANADIAN PACIFIC RAILWAY ?)

BEAM FABRICATION CONTRACT
FABRICATION OF STRUCTURAL STEEL
FOR PROPOSED STRUCTURE NO. 016-2815

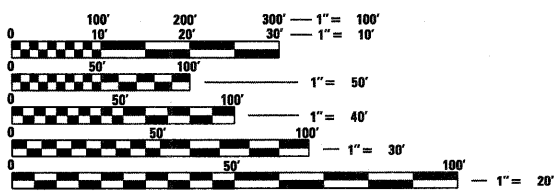
DISTRICT 1 - DESIGNCONSULTANT SERVICES/RAJENDRA SHAH (847) 705-4555



IMPROVEMENT ENDS
STA. 194 + 30

SN 016-0335 EXISTING
SN 016-2815 PROPOSED
STA. 183 + 33.30 1,250'-3"
US 12/45 OVER SOO LINE

IMPROVEMENT BEGINS
STA. 173 + 50



FULL SIZE PLANS HAVE BEEN PREPARED USING STANDARD ENGINEERING SCALES. REDUCED SIZED PLANS WILL NOT CONFORM TO STANDARD SCALES. IN MAKING MEASUREMENTS ON REDUCED PLANS, THE ABOVE SCALES MAY BE USED.

J.U.L.I.E.
JOINT UTILITY LOCATION INFORMATION FOR EXCAVATION
1-800-892-0123

CONTRACT NO. 60121

T-40-N
LEYDEN TOWNSHIP
LEYDEN TOWNSHIP LOCATION MAP
GROSS AND NET LENGTH OF PROJECT = 1250.3 FT. (.24 MILES)



Christopher L. Stine
CHRISTOPHER L. STINE P.E., S.E.
081-006667
EXP. 11/20/2010

STATE OF ILLINOIS
DEPARTMENT OF TRANSPORTATION
DIVISION OF HIGHWAYS

SUBMITTED *June 24, 2009*

Dina O'Keefe
DISTRICT ENGINEER

August 14, 2009
Charles G. Ingersoll
ENGINEER OF DESIGN AND ENVIRONMENT

August 14, 2009
Christine M. Reed
DIRECTOR, DIVISION OF HIGHWAYS

PRINTED BY THE AUTHORITY
OF THE STATE OF ILLINOIS

o:\work\53346\cedd\drawings\2007\bridge\steel\contract.6.2009\00Ccover_s.dwg 6/23/2009