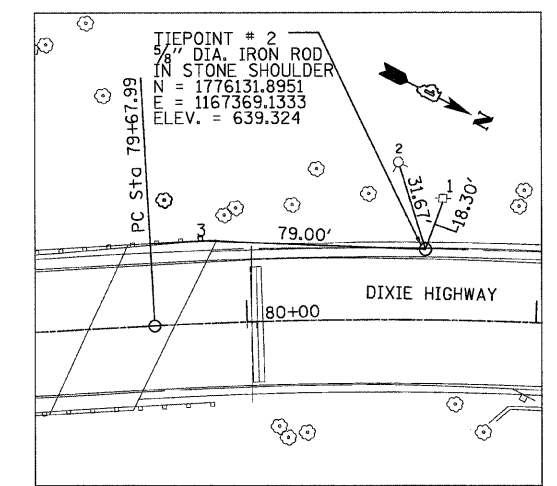
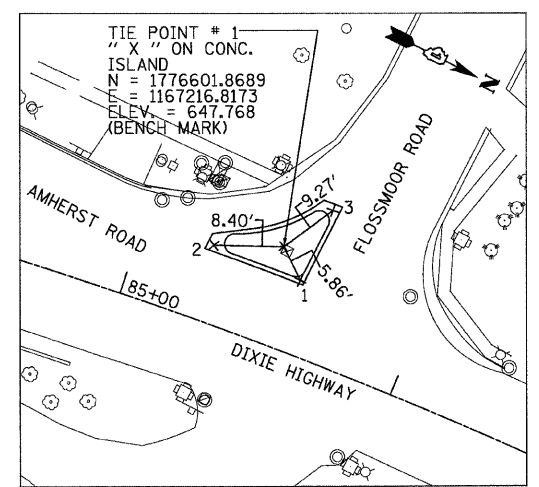


PROP. CURVE PDIXIE1-5
 PI STA. = 83+27.12
 $\Delta = 28^\circ 46' 29''$ (RT)
 $D = 4^\circ 05' 36''$
 $R = 1,400.00'$
 $T = 359.13'$
 $L = 702.95'$
 $E = 45.33'$
 $\theta = 3.29^\circ$
 $T.R. = 80.08'$
 $S.E. RUN = 206$
 P.C. STA. = 79+67.99
 P.T. STA. = 86+70.94
 P.I. STA. = N. 1,776,369.92, E. 1,167,252.84
 P.C. STA. = N. 1,776,061.02, E. 1,167,436.02
 P.T. STA. = N. 1,776,728.70, E. 1,167,240.99



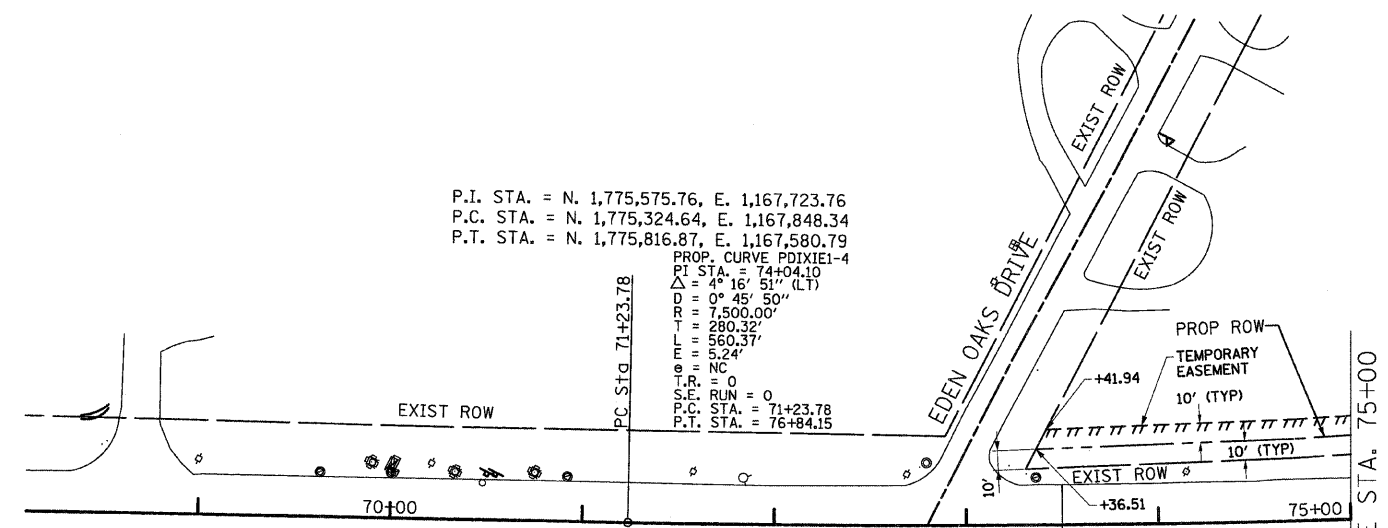
- TIES:
- MAG (MAGNETIC NAIL) ON EAST FACE OF POWER POLE.
 - " X " ON EAST FLANGE BOLT OF FIRE HYDRANT.
 - MAG (MAGNETIC NAIL) ON TOP OF NORTH MOST WOOD GUARDRAIL POST.

TIE POINT #2 (TP2)

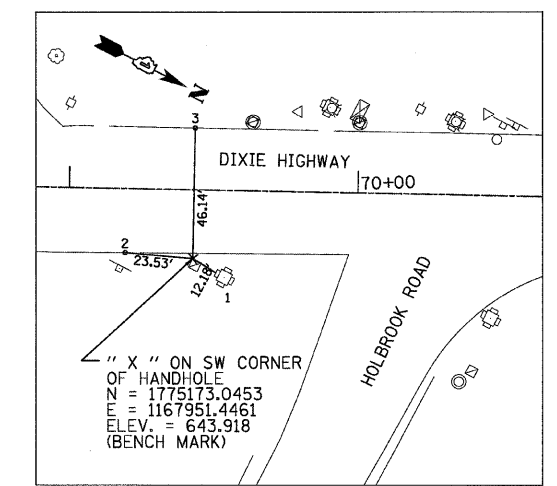


- TIES:
- " X " ON NORTHEAST CORNER OF CONCRETE ISLAND.
 - " X " ON SOUTHEAST CORNER OF CONCRETE ISLAND.
 - " X " ON NORTHWEST CORNER OF CONCRETE ISLAND.

TIE POINT #1 (TP1)



P.I. STA. = N. 1,775,575.76, E. 1,167,723.76
 P.C. STA. = N. 1,775,324.64, E. 1,167,848.34
 P.T. STA. = N. 1,775,816.87, E. 1,167,580.79
 PROP. CURVE PDIXIE1-4
 PI STA. = 74+04.10
 $\Delta = 4^\circ 16' 51''$ (LT)
 $D = 0^\circ 45' 50''$
 $R = 7,500.00'$
 $T = 280.32'$
 $L = 560.37'$
 $E = 5.24'$
 $\theta = NC$
 $T.R. = 0$
 $S.E. RUN = 0$
 P.C. STA. = 71+23.78
 P.T. STA. = 76+84.15



- TIES:
- " X " ON SOUTHWEST CORNER OF CONCRETE TRAFFIC SIGNAL BASE.
 - MAG (MAGNETIC NAIL) ON EDGE OF PAVEMENT.
 - MAG (MAGNETIC NAIL) ON EDGE OF PAVEMENT.

TIE POINT #3 (TP3)

NOTE:
 ADDITIONAL PROPOSED ROW AND TEMPORARY EASEMENTS SHOWN ON THIS PLAN ARE BASED ON THE ROW PLAT / INFORMATION DATED NOVEMBER 3RD, 2005, PROVIDED BY IDOT'S RIGHT OF WAY CONSULTANT, RUETTIGER, TONNELI AND ASSOCIATES. SINCE THE ROADWAY CENTERLINES AND THE CONTROL POINTS FROM THE ROW INFORMATION AND THE PHASE I SURVEY DID NOT COINCIDE, IN COORDINATION AND CONCURRENCE WITH RUETTIGER, TONNELI AND ASSOCIATES, RME SHIFTED THE SURVEY SO THAT THE CONTROL POINTS AND CENTERLINES WOULD COINCIDE.

NOTE:
 1. THE PROPOSED ALIGNMENT IS THE SAME AS THE EXISTING ALIGNMENT.

BENCH MARKS #1
 ELEVATION = 647.768
 " X " ON CONCRETE ISLAND AT SOUTHWEST QUADRANT OF DIXIE HIGHWAY AND FLOSSMOOR ROAD.

BENCH MARKS #2
 ELEVATION = 643.918
 " X " ON SOUTHWEST CORNER OF TRAFFIC HANDHOLE AT SOUTHEAST QUADRANT OF DIXIE HIGHWAY AND HOLBROOK ROAD.



200 S. Michigan Ave, Suite 1500 Chicago IL, 60604-2482
 T> 312 870 6600 F> 312 663 1473

REVISIONS	
NAME	DATE

ILLINOIS DEPARTMENT OF TRANSPORTATION
 F.A.U. 2843 DIXIE HIGHWAY
 OVER BUTTERFIELD CREEK
 ALIGNMENT, TIES AND BENCHMARKS

SCALE: VERT. 1"=50'
 HORIZ. 1"=50'
 DATE 6-25-09

DRAWN BY AW
 DESIGNED BY AW
 CHECKED BY MF