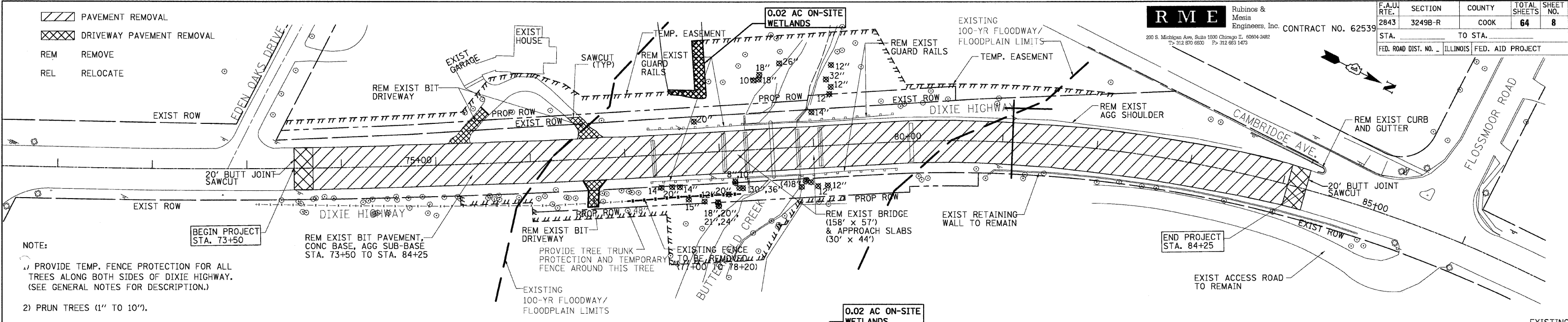
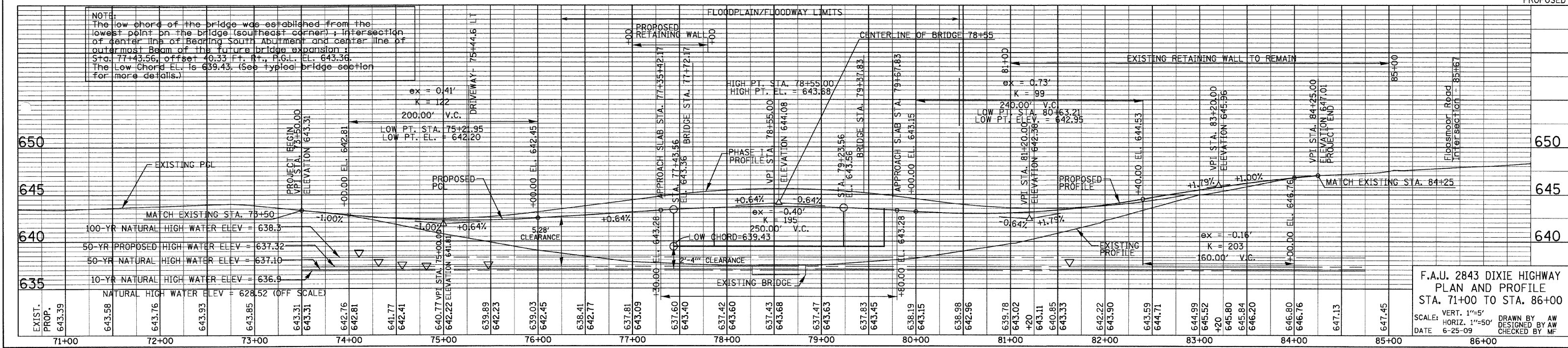
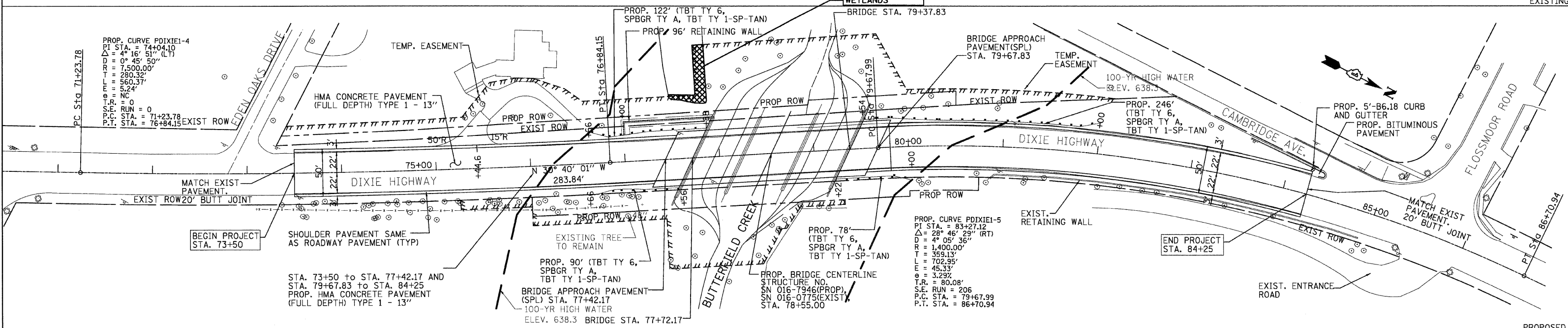


- PAVEMENT REMOVAL
- DRIVEWAY PAVEMENT REMOVAL
- REM REMOVE
- REL RELOCATE



NOTE:  
 1) PROVIDE TEMP. FENCE PROTECTION FOR ALL TREES ALONG BOTH SIDES OF DIXIE HIGHWAY. (SEE GENERAL NOTES FOR DESCRIPTION.)  
 2) PRUN TREES (1" TO 10").



F.A.U. 2843 DIXIE HIGHWAY  
 PLAN AND PROFILE  
 STA. 71+00 TO STA. 86+00  
 SCALE: VERT. 1"=5'  
 HORIZ. 1"=50'  
 DATE 6-25-09  
 DRAWN BY AW  
 DESIGNED BY AW  
 CHECKED BY MF