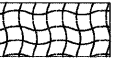
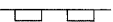


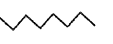


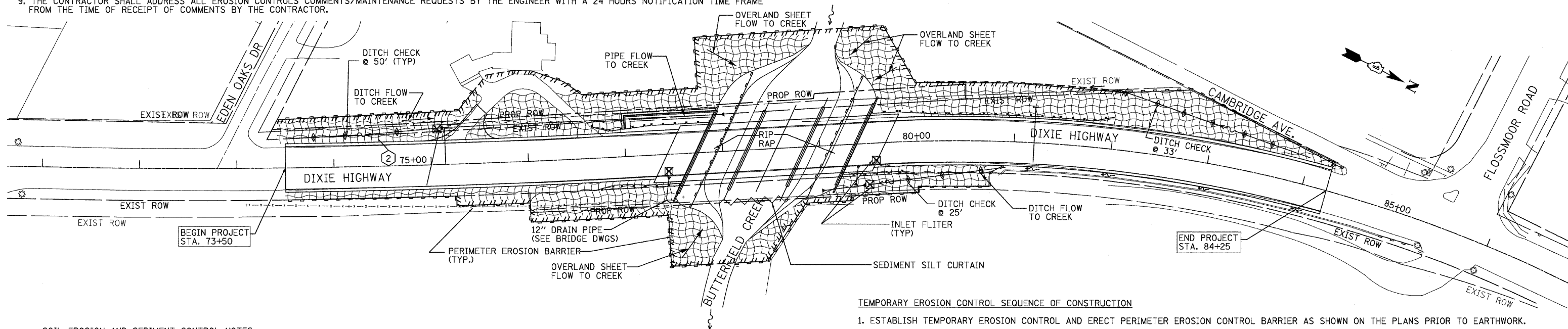
F.A.U. RTE.	SECTION	COUNTY	TOTAL SHEETS	SHEET NO.
2843	3249B-R	COOK	64	12
STA. _____		TO STA. _____		
FED. ROAD DIST. NO. _____		ILLINOIS FED. AID PROJECT		
CONTRACT NO. 62539				

TEMPORARY EROSION CONTROL NOTES

1. ALL CONSTRUCTION ACTIVITIES SHALL BE IN ACCORDANCE WITH THE NATIONAL POLLUTANT DISCHARGE ELIMINATION SYSTEM (NPDES) STORM WATER PERMIT.
2. THE CONTRACTOR SHALL INSTALL PERIMETER EROSION BARRIER PRIOR TO STRIPPING VEGETATION.
3. TEMPORARY DITCH CHECKS SHALL BE INSTALLED IMMEDIATELY AFTER DITCH GRADING IS COMPLETED. DITCH CHECKS ARE BASED ON ONE (1) INSTALLATION AND THREE (3) REPLACEMENTS OVER THE DURATION OF THE CONTRACT. THESE ITEMS WILL BE PAID FOR AS EACH, REGARDLESS OF THE TYPE OF CONFIGURATION USED.
4. RUNOFF FROM EXCAVATION AREAS SHALL LEAVE THE SITE THROUGH SEDIMENT CONTROL DEVICES. THE CONTRACTOR SHALL ADJUST HIS OPERATION AND IMPLEMENT EROSION CONTROL MEASURES ACCORDINGLY.
5. THE CONTRACTOR SHALL SURROUND ALL EARTH STOCKPILES WITH PERIMETER EROSION BARRIER.
6. THE CONTRACTOR SHALL MAINTAIN ALL EROSION CONTROL DEVICES AT ALL TIMES. EROSION CONTROL DEVICES SHALL BE INSPECTED EVERY SEVEN CALENDAR DAYS OR WITHIN 24 HOUR AFTER A 13 MM (0.5 INCH) RAINFALL OR SNOWFALL.
7. THE CONTRACTOR SHALL SEED ALL DISTURBED AREAS AS SOON AS PRACTICAL AFTER CONSTRUCTION ACTIVITIES IN THAT AREA HAS BEEN CONCLUDED. AREAS THAT HAVE STEEP SLOPES OR WILL NOT RECEIVE PERMANENT LANDSCAPING SHALL BE TEMPORARILY SEEDED. ALL FLATTER AREAS OR AREAS WHERE NO FURTHER WORK IS TO OCCUR FOR ONE MONTH OR MORE SHALL BE SEEDED AND EXCELSIOR BLANKED WITHIN SEVEN (7) CALENDAR DAYS.
8. NO SEDIMENT SHALL BE ALLOWED TO FLOW DOWNSTREAM AT ANY TIME. ALL WATER FROM DEWATERING OPERATIONS SHALL BE FILTERED TO REMOVE SEDIMENT BEFORE IT IS DISCHARGED INTO THE CREEK.
9. THE CONTRACTOR SHALL ADDRESS ALL EROSION CONTROLS COMMENTS/MAINTENANCE REQUESTS BY THE ENGINEER WITH A 24 HOURS NOTIFICATION TIME FRAME FROM THE TIME OF RECEIPT OF COMMENTS BY THE CONTRACTOR.

LEGEND

- TEMPORARY EROSION CONTROL SYSTEMS PER STANDARD
-  TEMPORARY EROSION CONTROL SEEDING
 -  PERIMETER EROSION BARRIER
 -  TEMPORARY DITCH CHECK (ROLLED EXCELSIOR)
 -  INLET FLITER
 -  SEDIMENT CONTROL, SILT CURTAIN (STREAM VELOCITY=2.84 FPS)
- NOTE: STABILIZED CONSTRUCTION ENTRANCES SHALL BE USED. LOCATIONS WILL VARY.

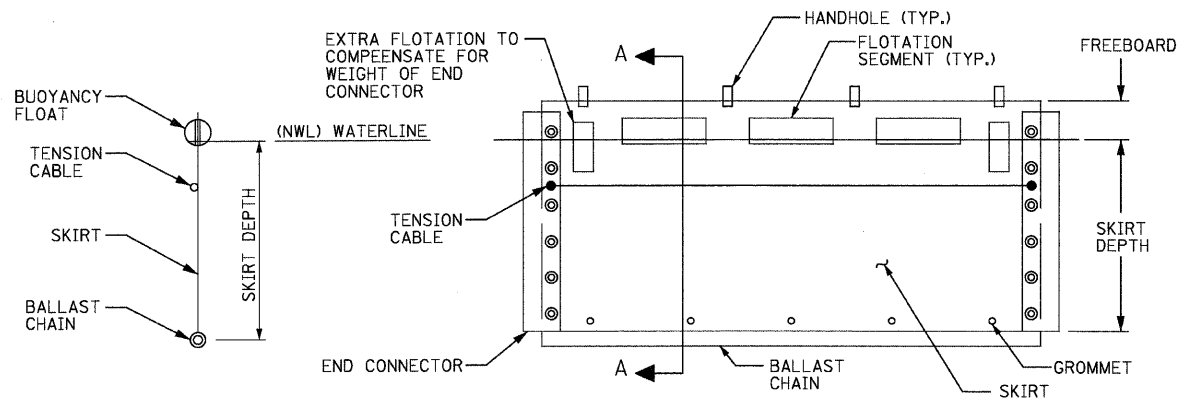


TEMPORARY EROSION CONTROL SEQUENCE OF CONSTRUCTION

1. ESTABLISH TEMPORARY EROSION CONTROL AND ERECT PERIMETER EROSION CONTROL BARRIER AS SHOWN ON THE PLANS PRIOR TO EARTHWORK.
2. IMPLEMENT SEDIMENT AND EROSION CONTROL DEVICES FOR STOCKPILE AREAS REQUIRED.
3. CONSTRUCT CONSTRUCTION STAGING OF PROPOSED DRAINAGE FACILITIES AND INSTALL TEMPORARY DITCH CHECKS IMMEDIATELY AFTER DITCH GRADING IS COMPLETED. MAINTAIN EROSION CONTROL DEVICES AND ELEMENTS FOR THE ENTIRE DURATION OF CONSTRUCTION AS DIRECTED BY THE ENGINEER.
4. INSTALL PERMANENT LANDSCAPING IN CONJUNCTION WITH CONSTRUCTION STAGING.
5. CLEAN DRAINAGE FACILITIES AND REMOVE TEMPORARY EROSION CONTROL DEVICES WITHIN 30 DAYS AFTER FINAL SITE STABILIZATION IS ACHIEVED.

SOIL EROSION AND SEDIMENT CONTROL NOTES

1. THE SOIL EROSION AND SEDIMENT CONTROL PRACTICES WILL BE INSPECTED WEEKLY AND AFTER 1/2 INCH OF RAIN OR MORE BY THE INDIVIDUAL ON SITE IN CHARGE OF SOIL EROSION AND SEDIMENT CONTROL DURING THE CONSTRUCTION OF THE PROJECT.
2. EROSION CONTROL BLANKET SHALL BE INSTALLED TO ALL DISTURBED AREAS WITH SLOPES EQUAL TO OR GREATER THAN 5H:1V AND IN CRITICAL AREAS (I.E. DETENTION BASIN PERIMETERS, STREAMBANKS, BERMS, ETC.) IMMEDIATELY UPON FINAL GRADING.
3. SILT FENCE SHALL BE INSTALLED FOLLOWING THE COMPLETION AND STABILIZATION OF THE STORMWATER FACILITIES WILL REMAIN IN PLACE UNTIL THE CONTRIBUTING AREA IS STABILIZED.
4. STOCKPILES OF SOIL AND OTHER BUILDING MATERIALS TO REMAIN IN PLACE MORE THAN (3) DAYS SHALL BE FURNISHED WITH EROSION AND SEDIMENT CONTROL MEASURES (I.E. PERIMETER SILT FENCE). STOCKPILES TO REMAIN IN PLACE FOR 30 DAYS OR MORE SHALL RECEIVE TEMPORARY SEEDING.
5. ALL ADJACENT STREETS MUST BE KEPT CLEAR OF DEBRIS. INSPECTED DAILY AND CLEANED WHEN NECESSARY.
6. ALL SOIL EROSION AND SEDIMENT CONTROL PRACTICES ARE REFERENCED FROM THE ILLINOIS URBAN MANUAL.



SECTION A-A
NOT TO SCALE

ELEVATION
NOT TO SCALE
SEDIMENT CONTROL, SILT CURTAIN DETAIL

SILT CURTAIN TO BE USED TO CONTROL SILT AND DEBRIS WHEN WORKING IN WATERWAY-SEE SPECIAL PROVISION

REVISIONS	
NAME	DATE

ILLINOIS DEPARTMENT OF TRANSPORTATION
F.A.U. 2843 DIXIE HIGHWAY
OVER BUTTERFIELD CREEK
EROSION AND SEDIMENT CONTROL PLAN

RME Rubinos & Mesia Engineers, Inc.
200 S. Michigan Ave., Suite 1500 Chicago IL 60604-2482
T: 312.870.6900 F: 312.883.1473

SCALE: VERT. 1"=50'
HORIZ. 1"=50'
DATE 6-25-09

DRAWN BY AW
DESIGNED BY AW
CHECKED BY MF