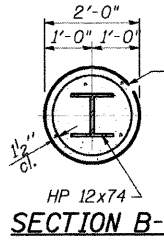
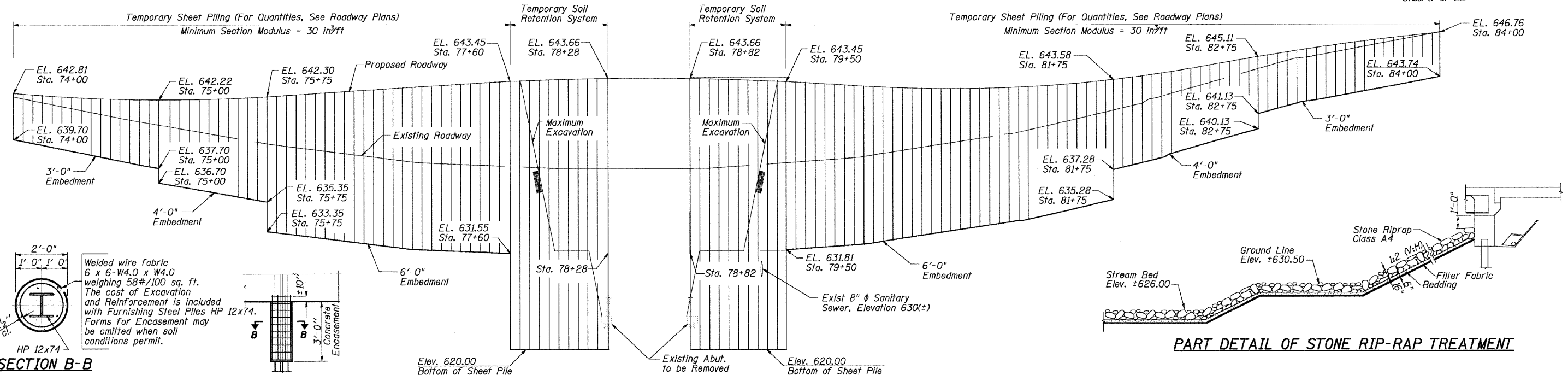
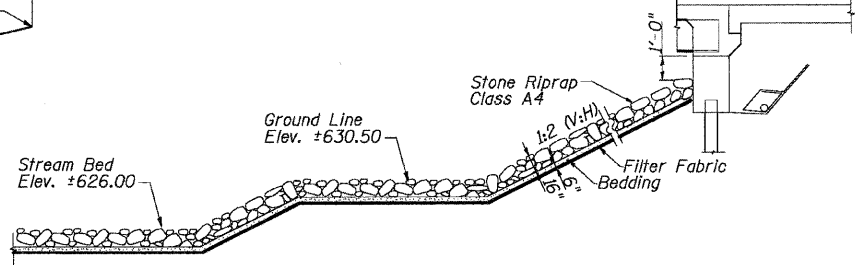


STATE OF ILLINOIS
DEPARTMENT OF TRANSPORTATION

F.A.R.T.E.	SECTION	COUNTY	TOTAL SHEETS	SHEET NO.
2843	3249B-R	COOK	64	27
FED. ROAD DIST. NO.		ILLINOIS	FED. AID PROJECT-	
Sheet 3 of 22			Contract No. 62539	



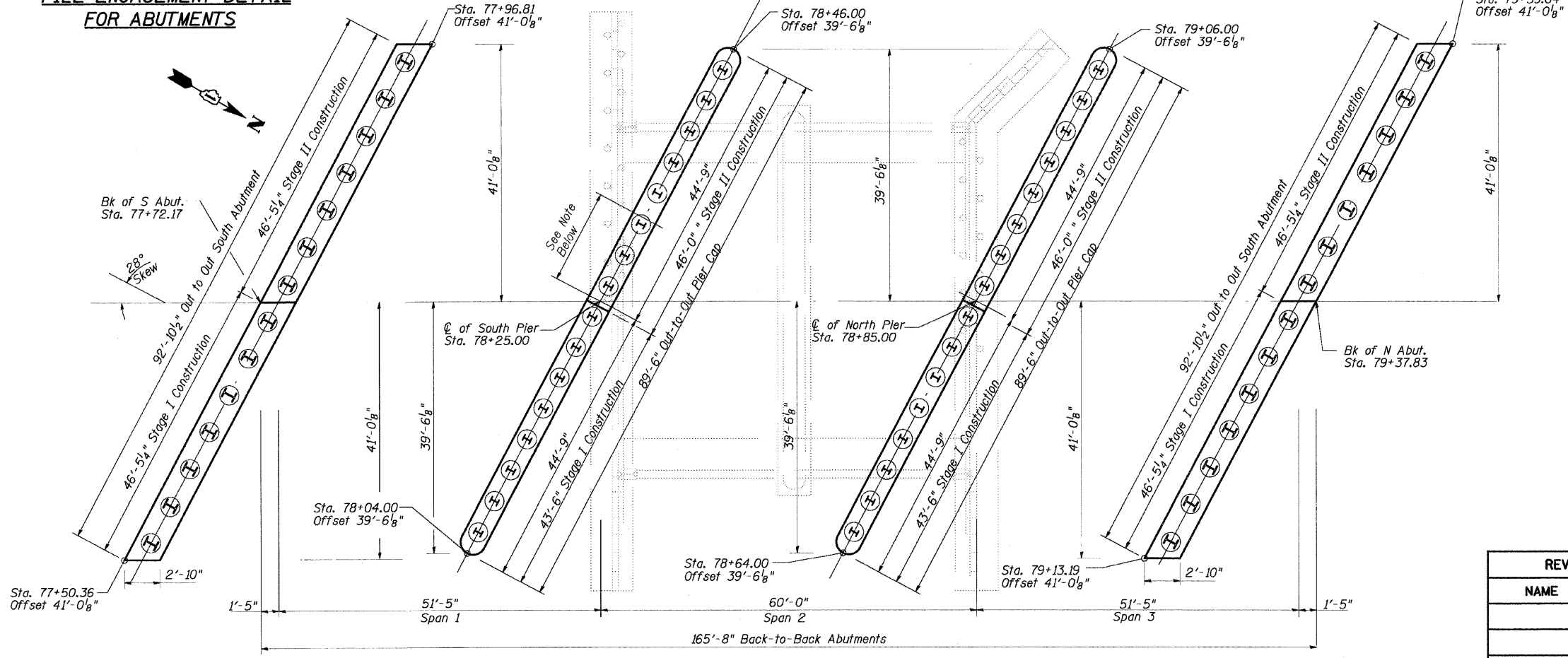
Welded wire fabric 6 x 6-W4.0 x W4.0 weighing 58#/100 sq. ft. The cost of Excavation and Reinforcement is included with Furnishing Steel Piles HP 12x74. Forms for Encasement may be omitted when soil conditions permit.



PART DETAIL OF STONE RIP-RAP TREATMENT

PILE ENCASEMENT DETAIL FOR ABUTMENTS

ELEVATION



Notes:

A cantilevered sheet piling design is not feasible in the region designated as "Temporary Soil Retention System". A wale restraining system or other system will be required. The contractor shall submit a temporary soil retention system design including plan details and computations to the Engineer for review and approval. The design requires a seal from a Licensed Structural Engineer.

If the contractor chooses to alter the temporary cantilevered sheet piling design requirements shown on the plans, a design submittal including plan details and calculations will be required for review and acceptance by the Engineer.

The contractor shall connect the first sheet to the existing abutment wall to ensure stability of sheets driven to the top of the existing footing. This connection shall be reviewed and accepted by the Engineer and included in the cost for Temporary Sheet Piling.

Hard driving may be encountered during the sheet piling installation. The Contractor shall provide the appropriate driving equipment for the soil conditions indicated on the boring logs.

There are existing utilities in the areas where proposed sheet piling will be installed. Contractor to locate all existing utilities per requirements of the special provisions. For overhead utilities and all other known utilities. See Roadway Plans, Sheet 13.

Note:
Interference With Existing Piles in Existing Abutment is Possible. In Such Case, Proposed Piles Shall be Relocated as Directed by the Engineer of Record. Maintain Minimum Pile Spacing of 3'-0" New Piles Must Remain Along ϕ of Pier.

FOOTING LAYOUT

REVISIONS	
NAME	DATE

**FOOTING LAYOUT
SHEET PILE ELEVATION
& RIP-RAP DETAIL**
DIXIE HIGHWAY OVER
BUTTERFIELD CREEK
F.A.U. ROUTE 2843 SECTION 3249B-R
STA. 78+55.00
COOK COUNTY
STRUCTURE NUMBER 016-7946

SCALE: NOT-TO-SCALE
DATE 6-25-09

DRAWN BY BV
DESIGNED BY BS
CHECKED BY PK



\$PENT.B.5P \$PLT.DRV.5\$
 \$FILES \$DATES \$TIME \$