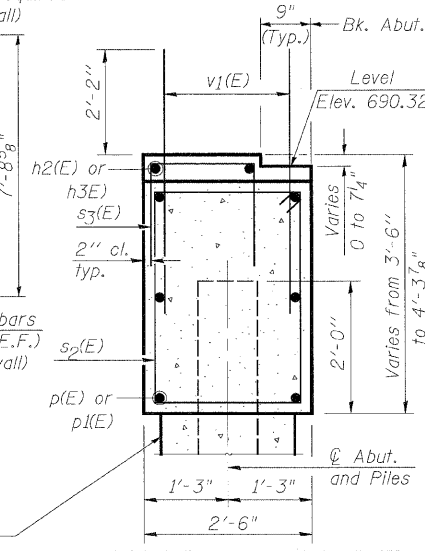


ELEVATION NORTH ABUTMENT
 (Looking North perpendicular to skew)

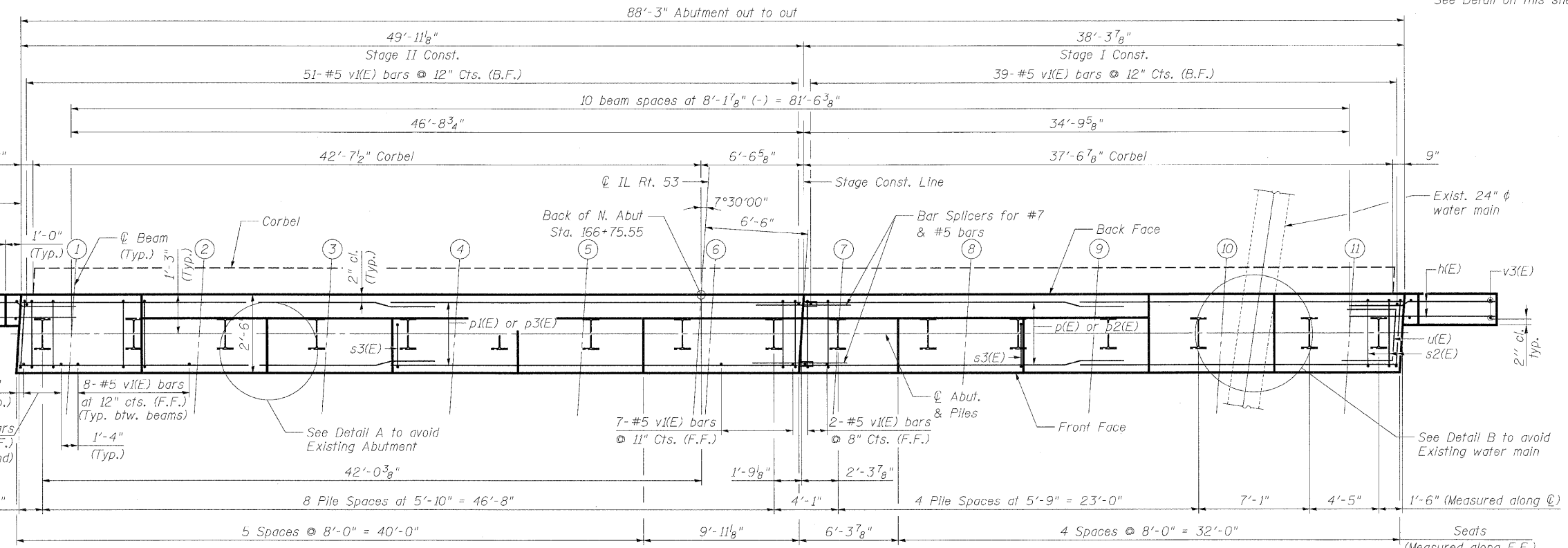


SECTION THRU ABUTMENT

BILL OF MATERIAL

Bar	No.	Size	Length	Shape
h(E)	20	# 5	7'-8"	
h1(E)	24	# 5	8'-7"	
h2(E)	2	# 5	13'-10"	
h3(E)	2	# 5	25'-7"	
p(E)	12	# 7	20'-4"	
p1(E)	12	# 7	26'-4"	
s2(E)	93	# 4	11'-5"	□
s3(E)	42	# 4	5'-5"	□
u(E)	8	# 6	6'-2"	┘
v1(E)	179	# 5	4'-4"	
v3(E)	14	# 5	12'-2"	
* Porous Granular Embankment, Special				Cu. Yd. 119
Structure Excavation				Cu. Yd. 101
Concrete Structures				Cu. Yd. 34.3
Reinforcement Bars, Epoxy Coated				Pound 3,520
Furnishing Steel Piles HP12x53				Foot 1,024
Driving Piles				Foot 1,024
Bar Splicers				Each 8
Pile Shoes				Each 16

* See Special Provisions

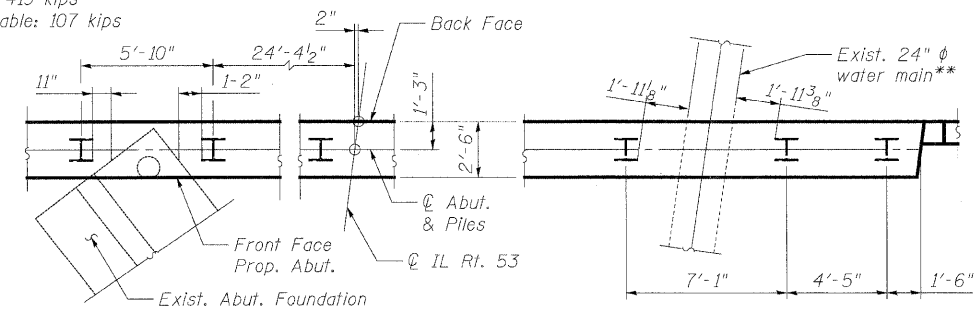


PLAN

** Water main shall be exposed before driving piles.

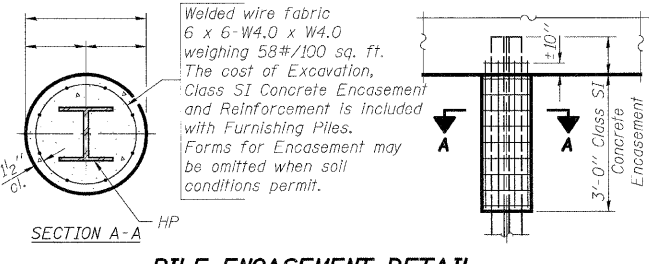
PILE DATA

Type: Steel HP 12x53 with Pile Shoes
 Nominal Required Bearing: 419 kips
 Allowable Resistance Available: 107 kips
 Est. Length: 64 ft
 No. Production Piles: 16



DETAIL A

DETAIL B



PILE ENCASEMENT DETAIL

ANCHOR BOLT DETAIL

BAR SIZE	MIN. LAP SPLICE
#4	1'-4"
#5	1'-8"
#6	2'-0"
#7	2'-9"

REVISIONS	
NAME	DATE

NOTES:

1. Pour steps monolithically with cap.
2. For v3(E) cutting diagram & bar bending diagrams see sheet S12.
3. For Bar Splicer Details see sheet S15.

ILLINOIS DEPARTMENT OF TRANSPORTATION

NORTH ABUTMENT
 ILLINOIS ROUTE 53 OVER
 SPRING BROOK CREEK
 FAU 2578 SECTION 532B-1
 STRUCTURE NO. 022-0189
 DUPAGE COUNTY STATION 166+46.79

SCALE: NONE DRAWN BY: M.T. / E.M.
 DATE: 6/12/09 CHECKED BY: A. YARGICOGLU

H:\p0201901\16169 6/10/2009 5:40:45 PM G:\NDC\19356.AC\ILL53\SPRINGBROOK\Drawings\STRUCT\13-NABUT.dgn

