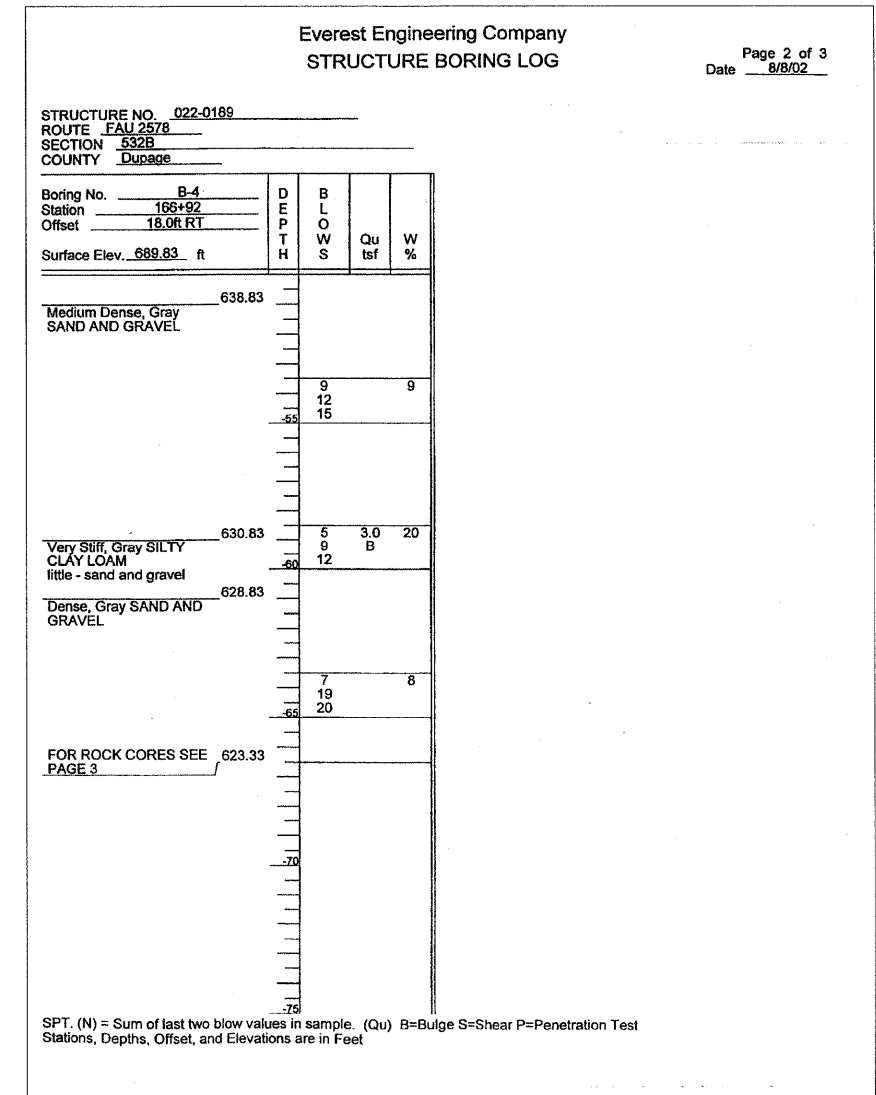
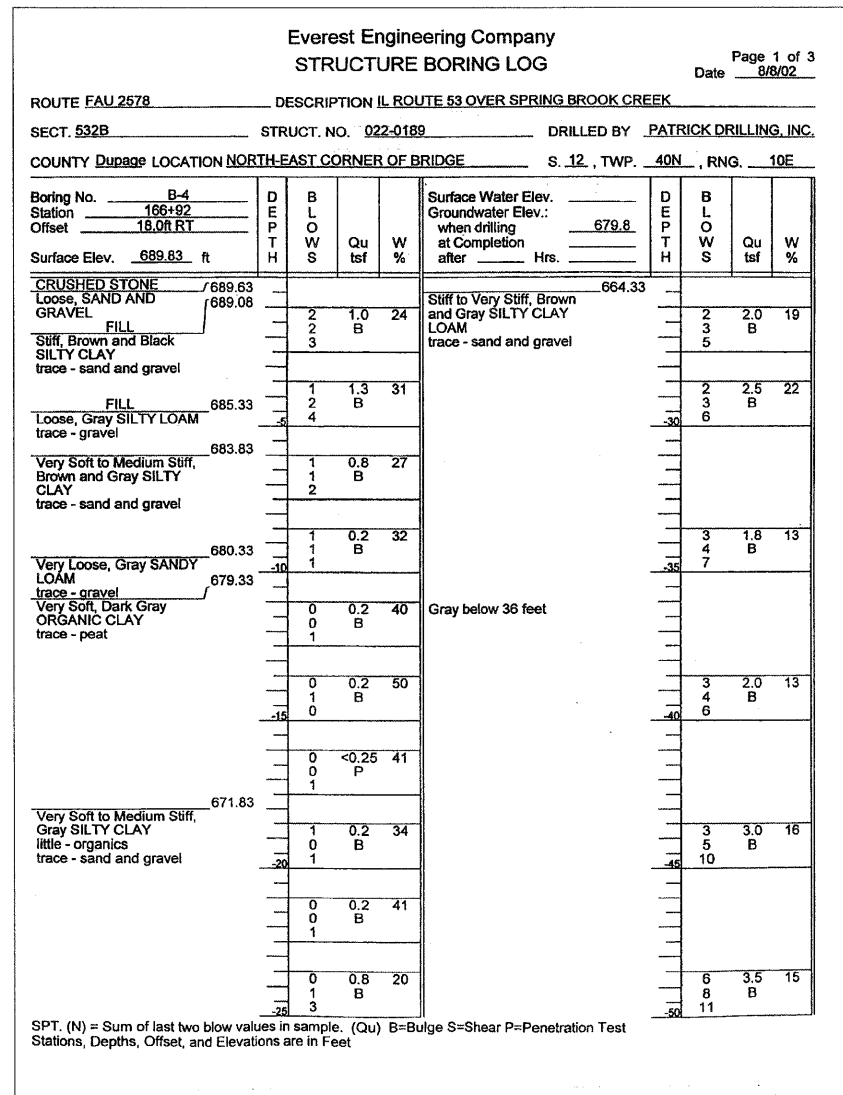
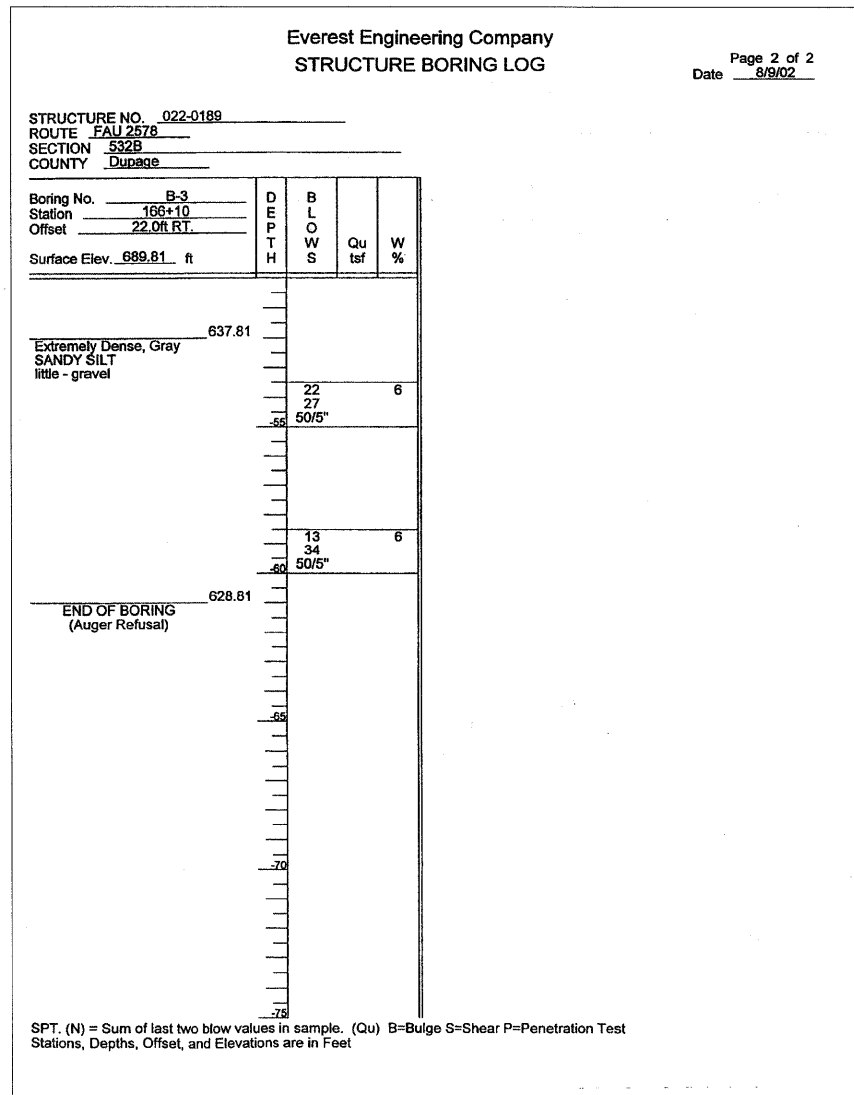


F.A.U. RTE.	SECTION	COUNTY	TOTAL SHEETS	SHEET NO.
2578	532B-1	DUPAGE	117	66
FED. ROAD DIST. NO. 7 ILLINOIS FED. AID PROJECT				



T:\cadd\p\Raw\Li06\6/10/2009 3:13:33 PM
 G:\DOT\3356-AQ\IL53\SpringBrook\Drawings\STRUCT\NB-aslbor\inglog83.dgn



REVISIONS	
NAME	DATE

ILLINOIS DEPARTMENT OF TRANSPORTATION

SOIL BORING LOGS - III
ILLINOIS ROUTE 53 OVER
SPRING BROOK CREEK
FAU 2578 SECTION 532B-1
STRUCTURE NO. 022-0189
DUPAGE COUNTY STATION 166+46.79

SCALE: NONE DRAWN BY: E. MROCEK
DATE: 6/12/09 CHECKED BY: G. HATLESTAD