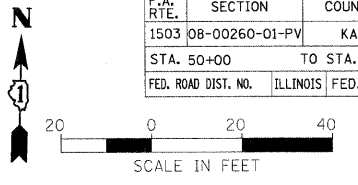
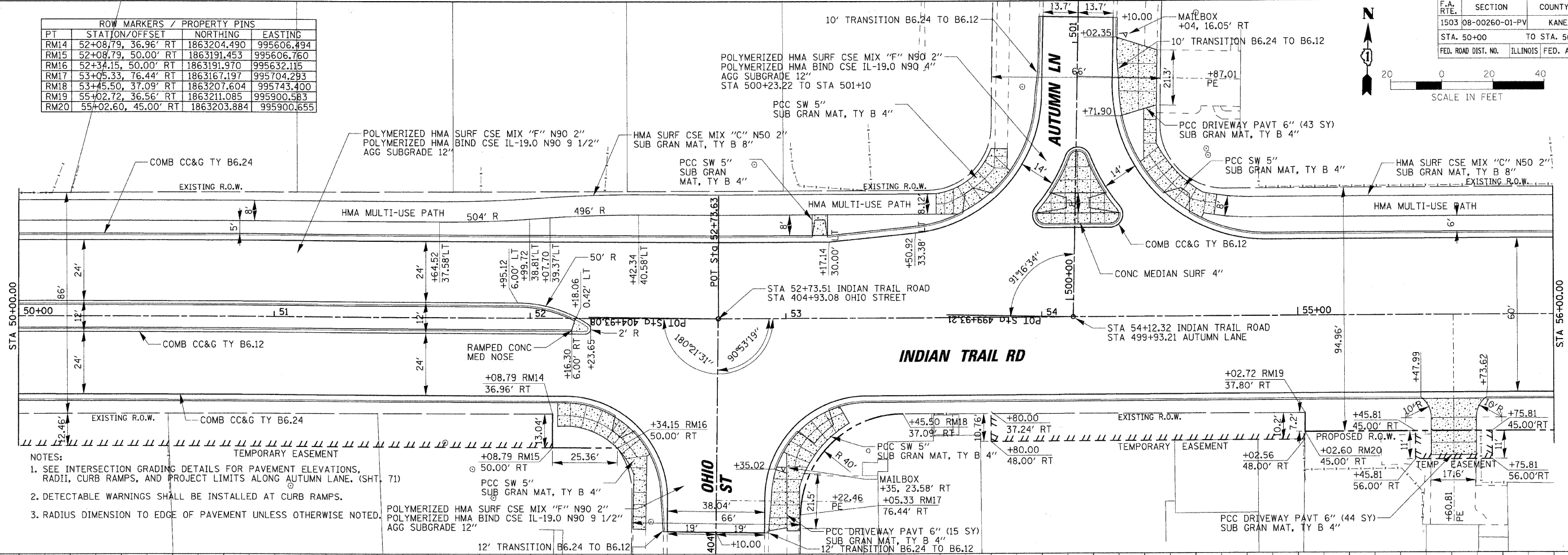


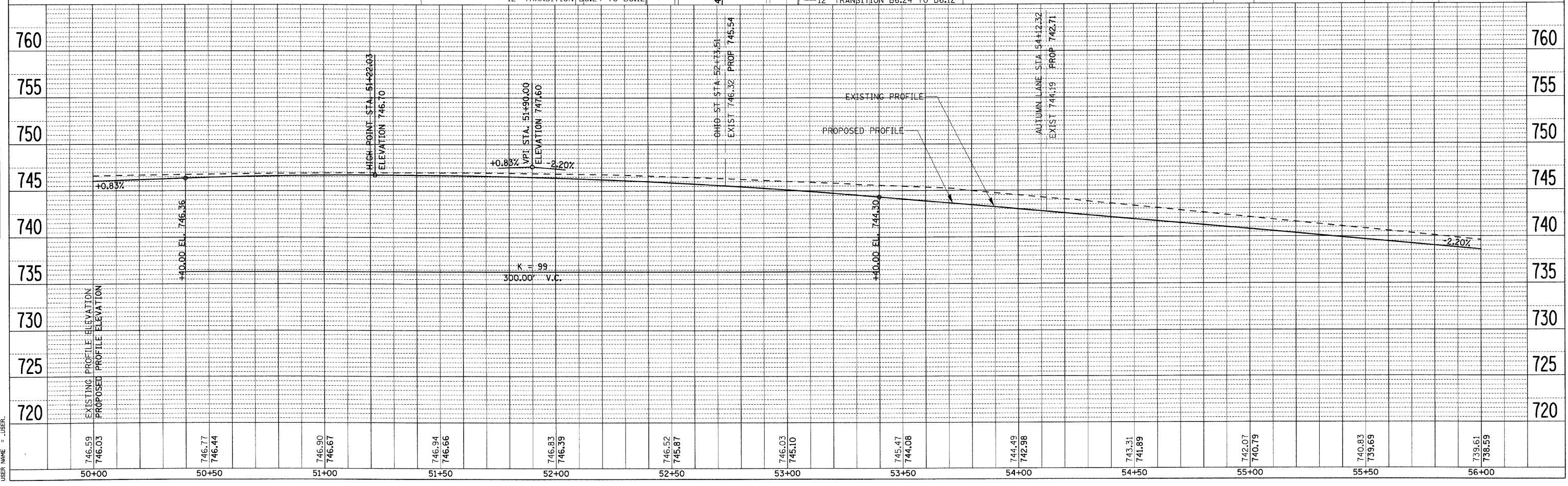
F.A. RTE.	SECTION	COUNTY	TOTAL SHEETS	SHEET NO.
1503	08-00260-01-PV	KANE	176	35
STA. 50+00		TO STA. 56+00		
FED. ROAD DIST. NO.		ILLINOIS		FED. AID PROJECT



ROW MARKERS / PROPERTY PINS			
PT	STATION/OFFSET	NORTHING	EASTING
RM14	52+08.79, 36.96' RT	1863204.490	995606.494
RM15	52+08.79, 50.00' RT	1863191.453	995606.760
RM16	52+34.15, 50.00' RT	1863191.970	995632.115
RM17	53+05.33, 76.44' RT	1863167.197	995704.293
RM18	53+45.50, 37.09' RT	1863207.604	995743.400
RM19	55+02.72, 36.56' RT	1863211.085	995900.583
RM20	55+02.60, 45.00' RT	1863203.884	995900.655



- NOTES:
- SEE INTERSECTION GRADING DETAILS FOR PAVEMENT ELEVATIONS, RADII, CURB RAMPS, AND PROJECT LIMITS ALONG AUTUMN LANE. (SHT. 71)
  - DETECTABLE WARNINGS SHALL BE INSTALLED AT CURB RAMPS.
  - RADIUS DIMENSION TO EDGE OF PAVEMENT UNLESS OTHERWISE NOTED.



DATE	BY

DATE	BY

PLOT DATE = 1/6/2009  
 FILE NAME = h:\work\08-00260-01-PV\1503\1503-01-PV-35.dgn  
 PLOT SCALE = 1"=20'  
 USER NAME = jbsrl