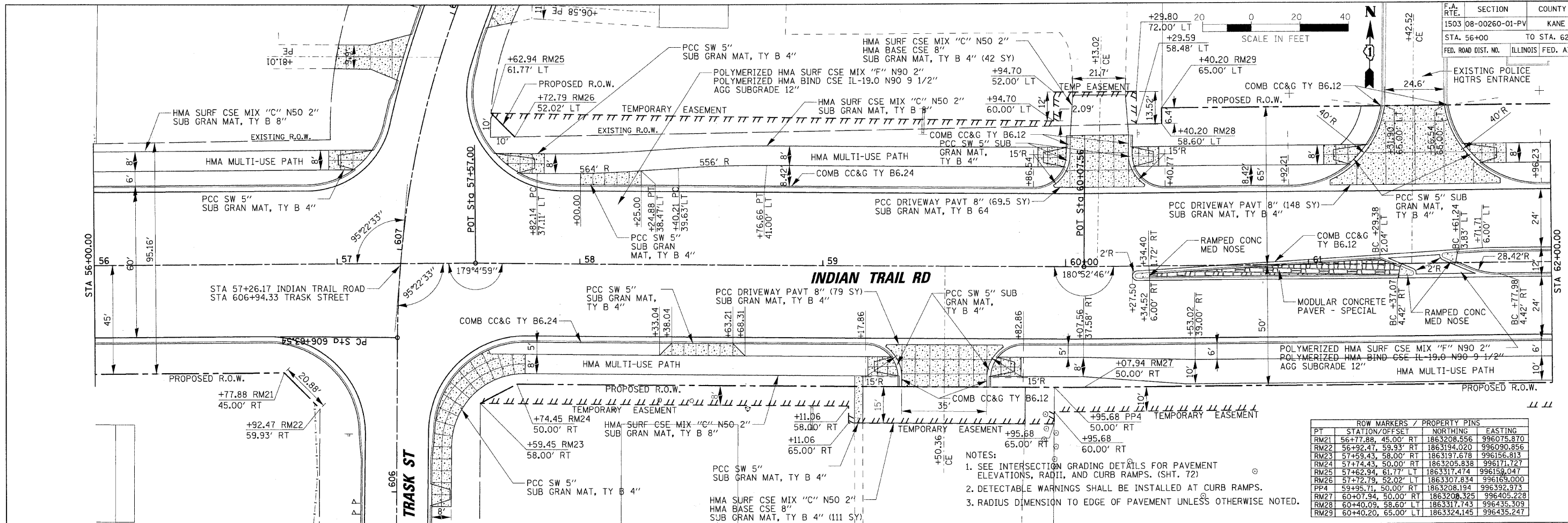


F.A. RTE.	SECTION	COUNTY	TOTAL SHEETS	SHEET NO.
1503	08-00260-01-PV	KANE	176	36
STA. 56+00		TO STA. 62+00		
FED. ROAD DIST. NO.		ILLINOIS FED. AID PROJECT		

PLAN	SUBMITTED	DATE
NOTE BOOK NO.	BY	
	CHECKED	
	DATE	

PROFILE	SUBMITTED	DATE
NOTE BOOK NO.	BY	
	CHECKED	
	DATE	

PLOT DATE = 6/26/2009
 PLOT SCALE = 1" = 20'
 USER NAME = JUSER



ROW MARKERS / PROPERTY PINS

PT	STATION/OFFSET	NORTHING	EASTING
RM21	56+77.88, 45.00' RT	1863208.556	996075.870
RM22	56+92.47, 59.93' RT	1863194.020	996090.856
RM23	57+59.43, 58.00' RT	1863197.678	996156.813
RM24	57+74.43, 50.00' RT	1863205.838	996171.727
RM25	57+62.94, 61.77' LT	1863317.474	996159.047
RM26	57+72.79, 52.02' LT	1863307.834	996169.000
PP4	59+36.71, 50.00' RT	1863208.194	996392.973
RM27	60+07.94, 50.00' RT	1863208.325	996405.228
RM28	60+40.09, 58.60' LT	1863317.743	996435.309
RM29	60+40.20, 65.00' LT	1863324.145	996435.247

- NOTES:
- SEE INTERSECTION GRADING DETAILS FOR PAVEMENT ELEVATIONS, RADII, AND CURB RAMPS. (SHT. 72)
 - DETECTABLE WARNINGS SHALL BE INSTALLED AT CURB RAMPS.
 - RADIUS DIMENSION TO EDGE OF PAVEMENT UNLESS OTHERWISE NOTED.

