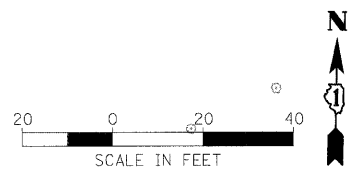
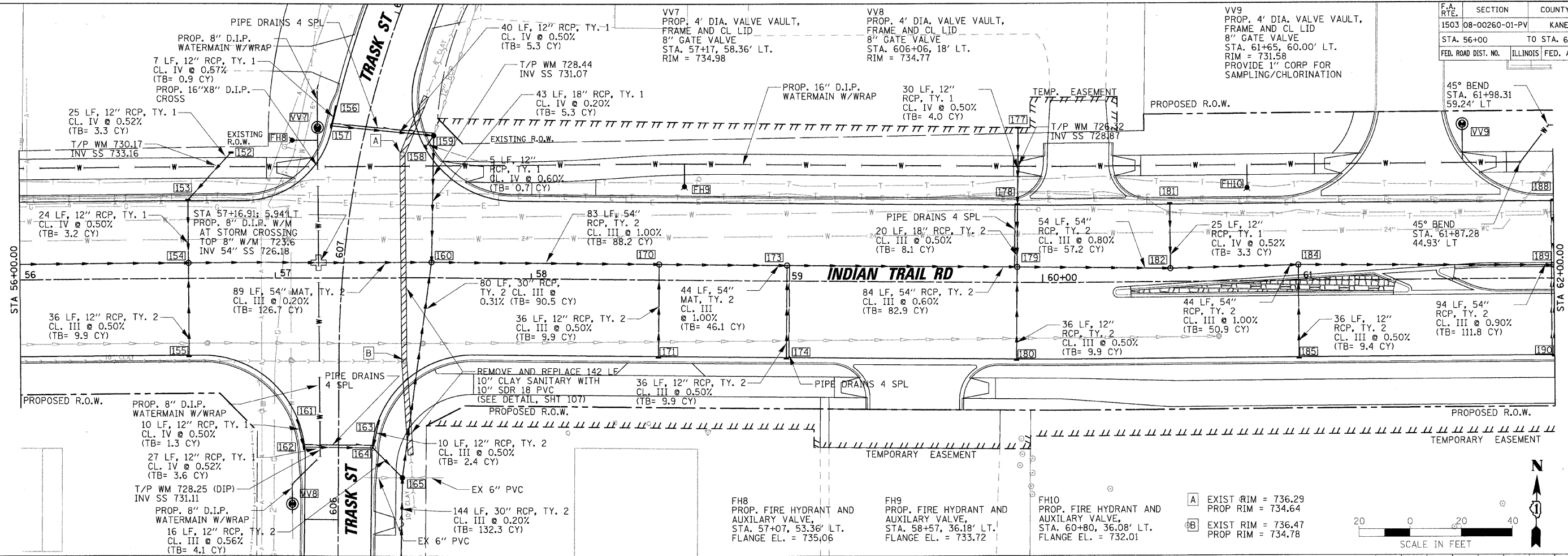


F.A. RTE.	SECTION	COUNTY	TOTAL SHEETS	SHEET NO.
1503	08-00260-01-PV	KANE	176	66
STA. 56+00		TO STA. 62+00		
FED. ROAD DIST. NO.		ILLINOIS FED. AID PROJECT		

DATE	BY	REVISION

DATE	BY	REVISION

PLOT DATE = 1/5/2009
 FILE NAME = H:\Aurora\20095\ITPH\11\Civil\SHA\DRN.IT.18.dgn
 PLOT SCALE = 1"=50'
 USER NAME = JSEB



- A EXIST RIM = 736.29
PROP RIM = 734.64
- B EXIST RIM = 736.47
PROP RIM = 734.78

LEGEND

- = PROPOSED 16" POLYWRAPPED WATERMAIN
- = EXISTING 24" WELL COLLECTOR WATERMAIN

EXISTING 16" WATERMAIN TO BE ABANDONED IS NOT INCLUDED IN PROFILE

