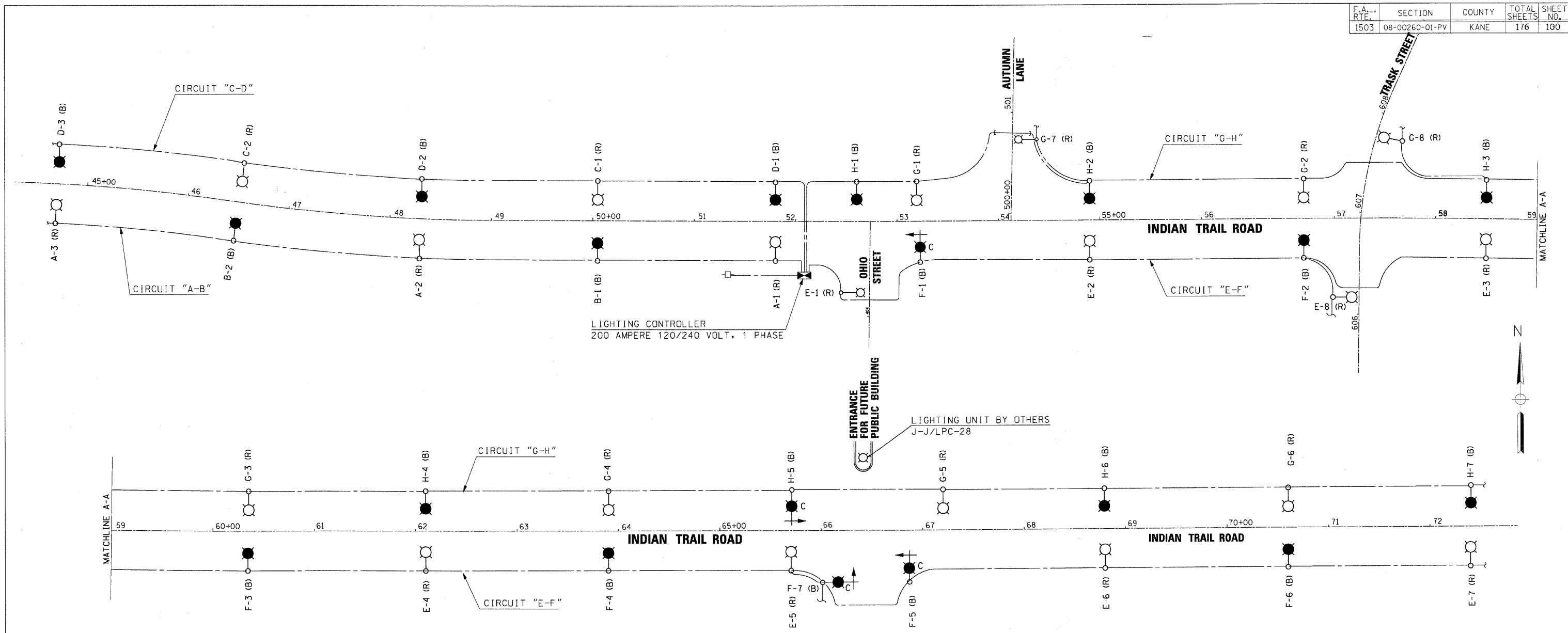


F.A. RTE.	SECTION	COUNTY	TOTAL SHEETS	SHEET NO.
1503	08-00260-01-PV	KANE	176	100

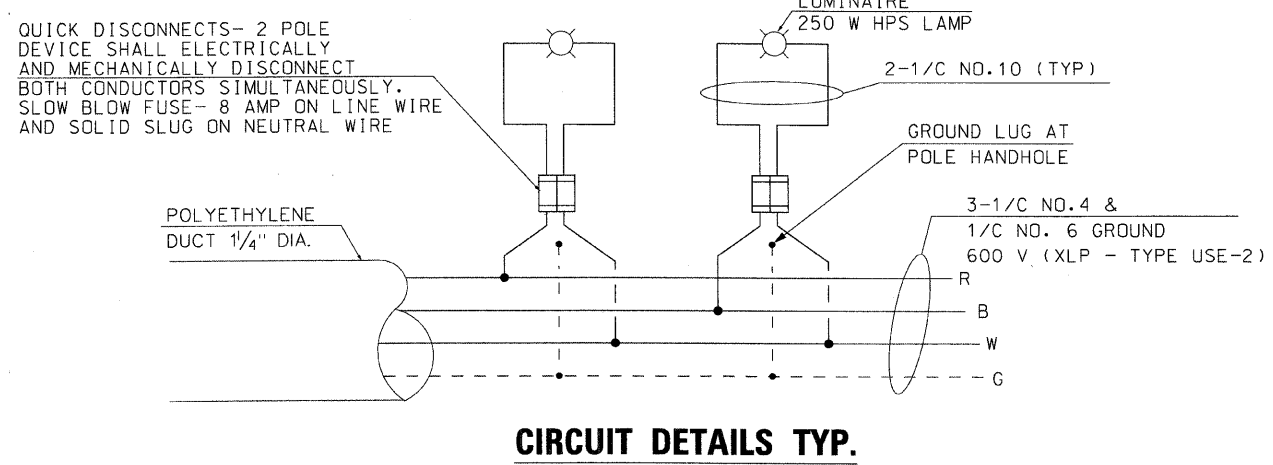


LIGHTING CONTROLLER
200 AMPERE 120/240 VOLT, 1 PHASE

LIGHTING UNIT BY OTHERS
J-J/LPC-28

LEGEND

- LUMINAIRE MOUNTED ON COMBINATION POLE
- LUMINAIRE ON RED CABLE CIRCUIT
- LUMINAIRE ON BLACK CABLE CIRCUIT
- LIGHTING CONTROLLER
200 AMP - 120/240 VOLT, 1 PHASE
- FUSE, 8 AMPERE / SOLID SLUG
- 3 1/C #4 & 1/C #6 GND
600 V (XLP - TYPE USE-2)
- CONNECTION



CIRCUIT DETAILS TYP.

CIRCUIT LOAD
CONTROLLER 120/240 VOLT PHASE

CIRCUIT RED	AMPERE @120 V	WATTS	CIRCUIT BLACK	AMPERE @120 V	WATTS
A	7.5	936	B	5.0	624
C	5.0	624	D	7.5	936
E	20.0	2,496	F	17.5	2,184
G	20.0	2,496	H	17.5	2,184
SPARE			SPARE		
SPARE			SPARE		
TOTAL	52.50	6,552	TOTAL	47.50	5,928



Sunjoy Inc.
Area Lighting
212 TIMBERCREST DRIVE
SCHAUMBURG, ILLINOIS
60193-1572

REVISIONS	
NAME	DATE

ILLINOIS DEPARTMENT OF TRANSPORTATION
CITY OF AURORA, KANE COUNTY
INDIAN TRAIL ROAD
ONE LINE CIRCUIT DIAGRAM

SCALE: VERT. DRAWN BY HKO
 HORIZ. DATE 06-03-08 CHECKED BY JS

REVISED 06-30-08