

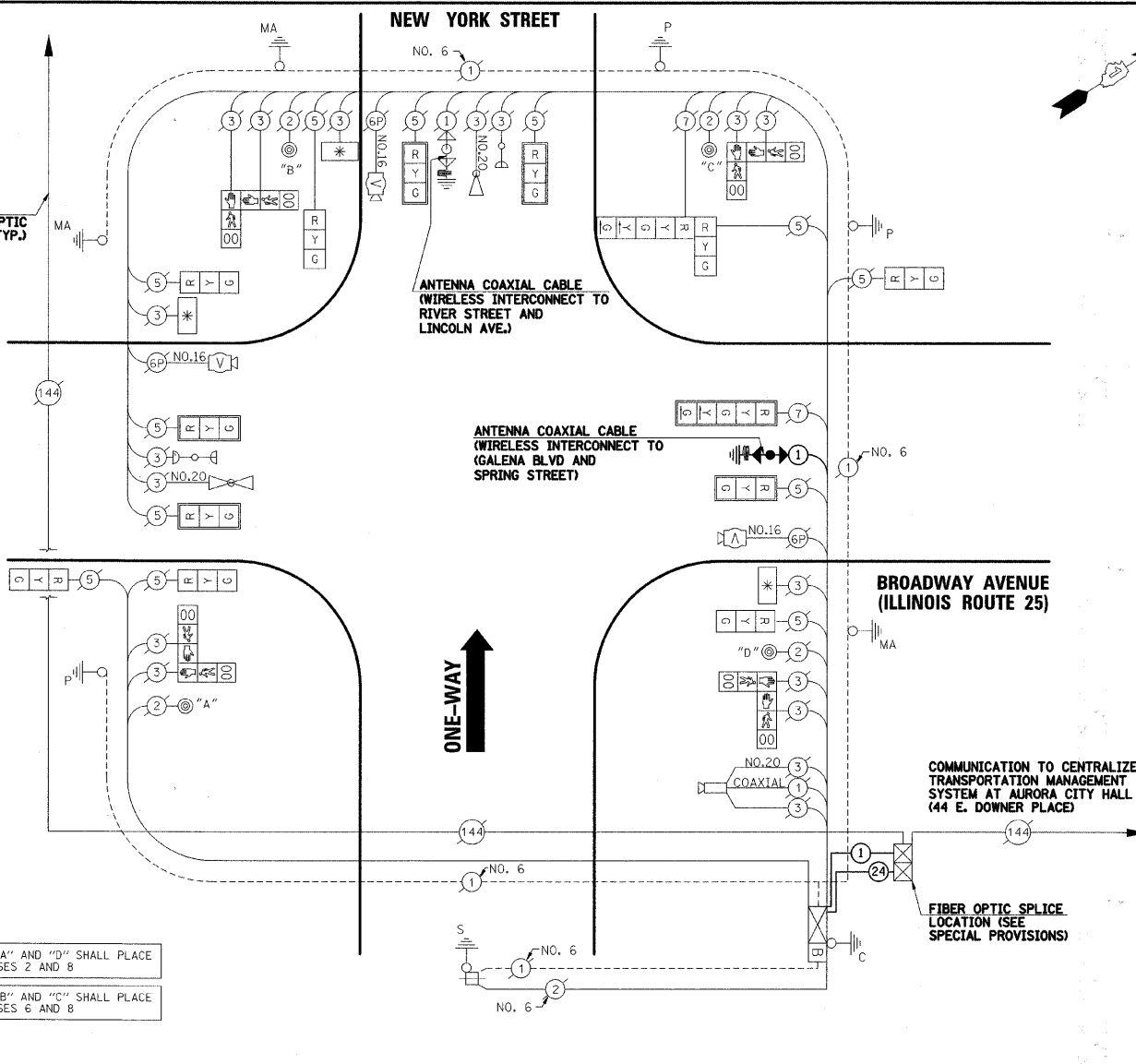
CABLE PLAN LEGEND

- | | | |
|-----------------|-----------------|-------------------------------------------------------------------------------------------------------------------|
| EXISTING | PROPOSED | |
| | | 8" (200mm) TRAFFIC SIGNAL SECTION |
| | | 12" (300mm) TRAFFIC SIGNAL SECTION |
| | | 12" (300mm) PEDESTRIAN SIGNAL SECTION |
| | | 12" (300mm) PEDESTRIAN SIGNAL SECTION |
| | | CONTROLLER CABINET |
| | | SERVICE INSTALLATION |
| | | TELEPHONE INSTALLATION |
| | | VEHICLE DETECTOR, INDUCTION LOOP |
| | | MAGNETIC DETECTOR |
| | | EMERGENCY VEHICLE LIGHT DETECTOR |
| | | CONFIRMATION BEACON |
| | | PUSHBUTTON DETECTOR |
| | | LUMINAIRE |
| | | DENOTES NUMBER OF CONDUCTORS.
ALL CABLE NO. 14 EXCEPT AS INDICATED.
ALL LOOP DETECTOR CABLE TO BE SHIELDED. |
| | | GROUND CABLE IN CONDUIT
NO. 6 SOLID COPPER (GREEN) |
| | | FIBER OPTIC CABLE IN CONDUIT
NO. 62.5/125 2-MM12F SM12F |
| | | SIGNAL FACE WITH BACKPLATE.
"P" INDICATES PROGRAMMED HEAD. |
| | | RAILROAD CONTROL CABINET |
| | | ILLUMINATED SIGN
"NO LEFT TURN" |
| | | ILLUMINATED SIGN
"NO RIGHT TURN" |
| | | WIRELESS ANTENNA |
| | | GROUND ROD AT HANDHOLE (H),
DOUBLE HANDHOLE (H), OR CONTROLLER (C) |
| | | GROUND ROD AT POST (P)
OR MAST ARM POLE (MA) |
| | | GROUND ROD AT ELECTRIC
SERVICE INSTALLATION |
| | | UNINTERRUPTIBLE POWER SUPPLY |
| | | LED STREET NAME SIGN |
| | | VIDEO DETECTION CAMERA |
| | | PAN/TILT/ZOOM CAMERA |

CITY OF AURORA
EXISTING FIBER OPTIC
CABLE NETWORK (TYP.)

PUSHBUTTONS "A" AND "D" SHALL PLACE
A CALL IN PHASES 2 AND 8

PUSHBUTTONS "B" AND "C" SHALL PLACE
A CALL IN PHASES 6 AND 8



SCHEDULE OF QUANTITIES

PAY ITEM DESCRIPTION	UNIT	NEW YORK STREET
MAINTENANCE OF EXISTING TRAFFIC SIGNAL INSTALLATION	EACH	1
REMOVE AND REINSTALL LIGHT POLE, SPECIAL	EACH	1

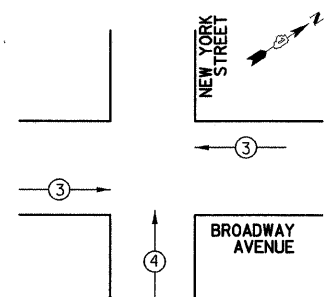
DATE	BY
DATE	BY
DATE	BY
DATE	BY
DATE	BY

DATE	BY
DATE	BY
DATE	BY
DATE	BY
DATE	BY

I.D.O.T TRAFFIC SIGNAL INSTALLATION ELECTRICAL SERVICE REQUIREMENTS					
TYPE	NO. LAMPS	WATTAGE		% OPERATION	TOTAL WATTAGE
		INCAND.	LED		
SIGNAL (RED)	14		17	0.50	119
(YELLOW)	14		25	0.25	87.5
(GREEN)	14		15	0.25	52.5
ARROW	4		12	0.10	4.8
PED. SIGNAL	8		25	1.00	200
CONTROLLER	1		100	1.00	100
UPS	1		25	1.00	25
LED SIGN	3		60	0.50	90
VIDEO SYSTEM	1		15	1.00	15
LUMINAIRE	3		250	0.50	375
TOTAL =					1068.8

ENERGY COSTS TO: CITY OF AURORA
44 E. DOWNER PLACE
AURORA, ILLINOIS 60507-2067

ENERGY SUPPLY CONTACT: MARK SCHERIBEL
PHONE: (630) 723-2128
COMPANY: COMMONWEALTH EDISON

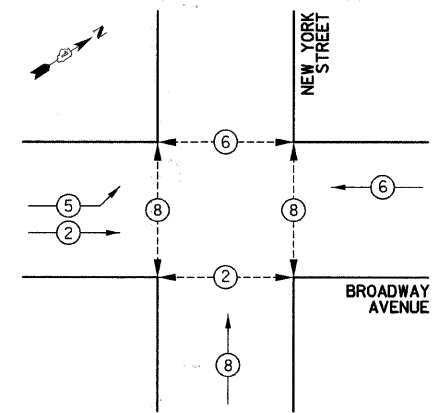


EMERGENCY VEHICLE PREEMPTION SEQUENCE

PROPOSED EMERGENCY VEHICLE PREEMPTORS		
PROPOSED EMERGENCY VEHICLE PREEMPTORS	3	4
MOVEMENT	←	↑

FOUNDATION (DEPTH)	FT. (m)	CABLE SLACK	FT. (m)	VERTICAL	FT. (m)
TYPE A - POST	4 (1.2)	HANDHOLE	6.5 (2.0)	ALL FOUNDATIONS	3.5 (1.0)
C - CONTROLLER	4 (1.2)	DOUBLE HANDHOLE	13 (4.0)	MAST ARM (L) POLE	20'±L-2=
D - CONTROLLER	4 (1.2)	SIGNAL POST	2 (1.0)	(6m±L-0.6m)	
E - M.A. LENGTH		CONTROLLER CAB.	1 (0.5)	BRACKET MOUNTED	13 (4.0)
<30'	30" (900mm)	FIBER OPTIC	13 (4.0)	PED. PUSHBUTTON	4 (1.2)
<40'	30" (750mm)	ELECTRIC SERVICE	1 (0.5)	ELECTRIC SERVICE	13.5 (4.1)
<40'	36" (900mm)	GROUND CABLE	1 (0.5)	SERVICE TO GROUND	13.5 (4.1)
<50'	36" (900mm)			POST MOUNTED	6 (1.8)
≥50'	36" (900mm)				

CONTROLLER SEQUENCE



PHASE DESIGNATION DIAGRAM

CONTROLLER SEQUENCE LEGEND	
	DUAL ENTRY PHASE
	SINGLE ENTRY PHASE
	OVERLAP
	NUMBER REFERRING TO ASSOCIATED PHASE
	PEDESTRIAN PHASE

FILE NAME =	USER NAME = #USER#	DESIGNED -	REVISED -
#FILE#		DRAWN BAH	REVISED -
	PLOT SCALE = #SCALE#	CHECKED APS	REVISED -
	PLOT DATE = 6/8/2009	DATE JAN 16 2009	REVISED -

STATE OF ILLINOIS
DEPARTMENT OF TRANSPORTATION

SCHEDULE OF QUANTITIES CABLE PLAN AND PHASE DESIGNATION DIAGRAM			
IL ROUTE 25 AT NEW YORK STREET			
SCALE:	SHEET NO.	OF SHEETS	STA. TO STA.

F.A.U. RTE.	SECTION	COUNTY	TOTAL SHEETS	SHEET NO.
2503	08-00272-00-TL	KANE	40	21
CONTRACT NO. 63177				
FED. ROAD DIST. NO.		ILLINOIS FED. AID PROJECT		