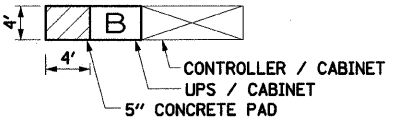
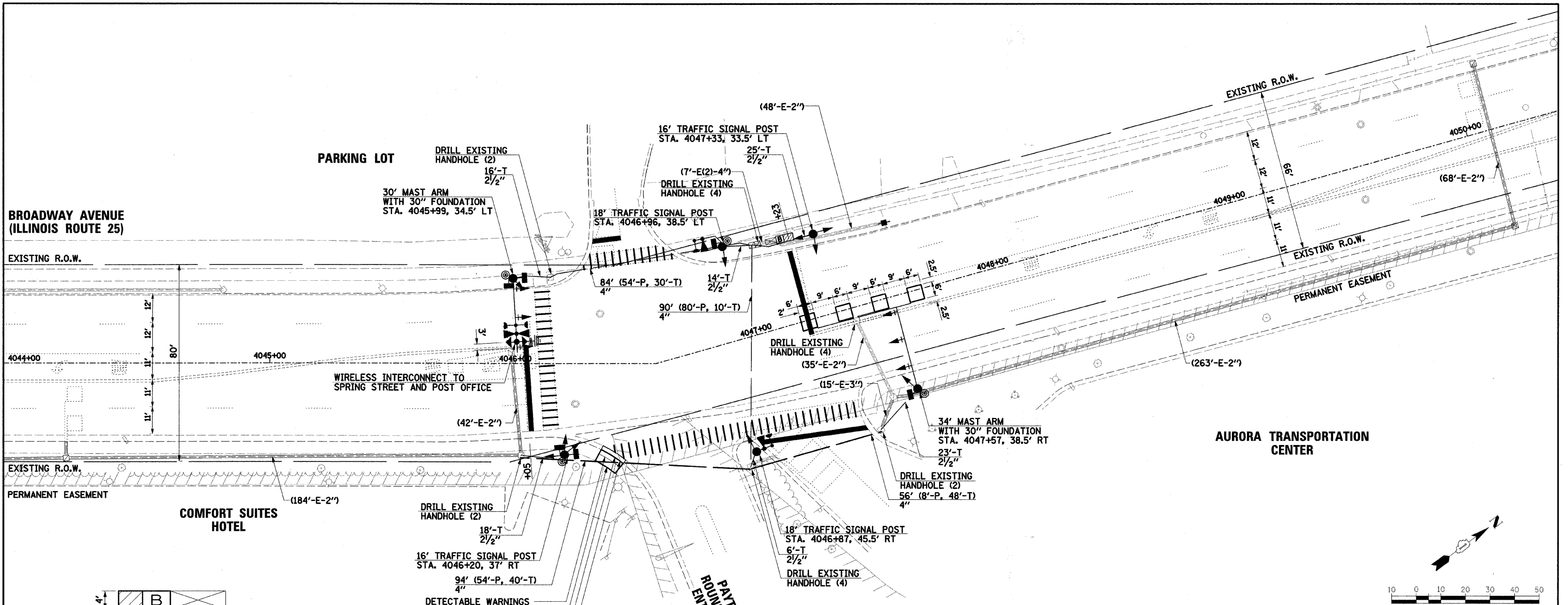


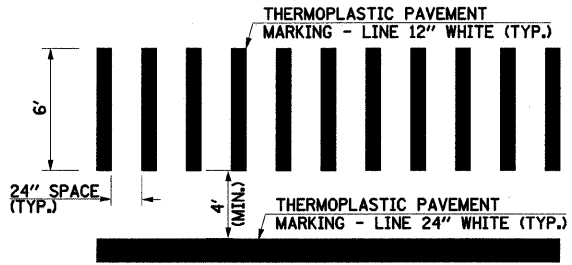
PLAN
 SERVED BY: DATE: _____
 PLOTTED BY: _____
 CHECKED BY: _____
 NOTE BOOK NO.: _____
 FILE NAME: _____

PROFILE
 SERVED BY: DATE: _____
 PLOTTED BY: _____
 CHECKED BY: _____
 NOTE BOOK NO.: _____
 FILE NAME: _____



CONCRETE PAD INSTALLATION DETAIL

NOTE:
 THE CONTRACTOR SHALL INSTALL A 5" CONCRETE MAINTENANCE PAD ADJACENT TO THE EXISTING CONTROLLER FOUNDATION. THE COST OF THE PAD WILL NOT BE PAID FOR SEPARATELY, BUT SHALL BE CONSIDERED AS INCLUDED IN THE COST OF THE UPS.



TYPICAL STRIPING DETAIL AT CROSSWALKS

NOTES:
 1. THE "SYSTEM" ANTENNA SHALL BE MOUNTED ON THE SOUTHBOUND MAST ARM, 3' WEST OF THE OUTER 5-SECTION SIGNAL HEAD OR AS DIRECTED BY THE TECHNICIAN INSTALLING THE INTERCONNECT (SEE MOUNTING DETAIL).
 2. ALL PROPOSED TRAFFIC SIGNAL MAST ARMS AND POSTS SHALL BE PAINTED BLACK.

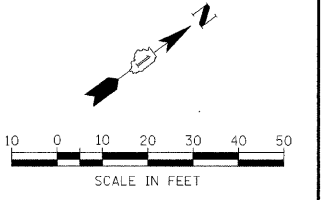
THE TRAFFIC SIGNAL CONTROL EQUIPMENT FOR THIS PROJECT SHALL BE "ECONOLITE" TO MATCH THE EXISTING ADJACENT SYSTEM.

THE EMERGENCY VEHICLE PREEMPTION EQUIPMENT FOR THIS PROJECT SHALL BE OPTICOM AS REQUIRED BY THE CITY OF AURORA.

RESTORATION OF WORK AREA:
 RESTORATION OF THE TRAFFIC SIGNAL WORK AREA SHALL BE INCIDENTAL TO THE RELATED PAY ITEM SUCH AS FOUNDATION, CONDUIT, HANDHOLE, TRENCH AND BACKFILL, ETC., AND NO EXTRA COMPENSATION SHALL BE ALLOWED UNLESS OTHERWISE NOTED. ALL ROADWAY SURFACES SUCH AS SHOULDERS, MEDIANS, SIDEWALKS, PAVEMENT, ETC. SHALL BE REPLACED IN KIND. ALL DAMAGE TO MOWED LAWNS SHALL BE REPLACED WITH AN APPROVED SOD, AND ALL DAMAGE TO UNMOWED FIELDS SHALL BE SEEDED IN ACCORDANCE WITH STANDARD SPECIFICATIONS 252 AND 250 RESPECTIVELY.

TRAFFIC SIGNAL LEGEND

	PROPOSED	EXISTING		PROPOSED	EXISTING
CONTROLLER			DETECTOR LOOP		
SERVICE INSTALLATION			CAST IRON JUNCTION BOX		
SIGNAL HEAD			EMERGENCY VEHICLE LIGHT DETECTOR		
SIGNAL HEAD WITH BACKPLATE			CONFIRMATION BEACON		
SIGNAL HEAD, PEDESTRIAN			SIGNAL HEAD OPTICALLY PROGRAMMED		
SIGNAL POST			CONDUIT SPLICE		
MAST ARM ASSEMBLY AND POLE, STEEL			WOOD POLE		
MAST ARM ASSEMBLY AND POLE, ALUMINUM			RACEWAY FOR MAGNETIC DETECTOR, TYPE I OR TYPE II		
COMBINATION MAST ARM ASSEMBLY AND POLE, STEEL WITH LUMINAIRE			VEHICLE DETECTOR, NON COMPENSATED MAGNETIC TYPE		
UNIT DUCT	UD		RAILROAD CONTROL CABINET		
COMMON TRENCH	CT		TELEPHONE CONNECTION		
HANDHOLE			ILLUMINATED SIGN "NO LEFT TURN"		
HEAVY DUTY HANDHOLE			ILLUMINATED SIGN "NO RIGHT TURN"		
DOUBLE HANDHOLE			UNINTERRUPTABLE POWER SUPPLY		
G.S. CONDUIT IN TRENCH (T) OR PUSHED (P)			VIDEO DETECTION CAMERA		
PEDESTRIAN PUSHBUTTON DETECTOR			VIDEO DETECTION AREA		
PAN/TILT/ZOOM CAMERA			WIRELESS ANTENNA		



FILE NAME = #FILEL#	USER NAME = #USER#	DESIGNED - BAH	REVISED -
		CHECKED - APS	REVISED -
		DATE - JAN 16 2009	REVISED -

STATE OF ILLINOIS
 DEPARTMENT OF TRANSPORTATION

TRAFFIC SIGNAL MODIFICATION PLAN
 IL ROUTE 25 AT AURORA TRANSPORTATION CENTER

F.A.U. RTE. 2503	SECTION 08-00272-00-TL	COUNTY KANE	TOTAL SHEETS 40	SHEET NO. 26
CONTRACT NO. 63177				
FED. ROAD DIST. NO. ILLINOIS FED. AID PROJECT				