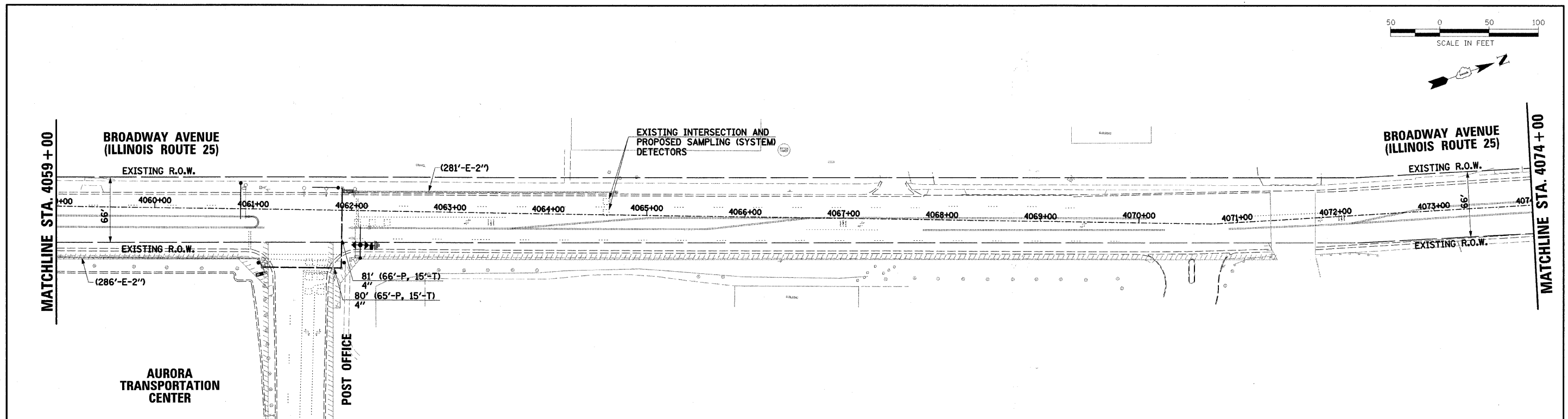
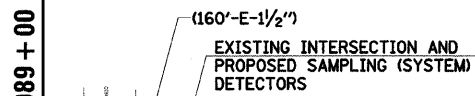
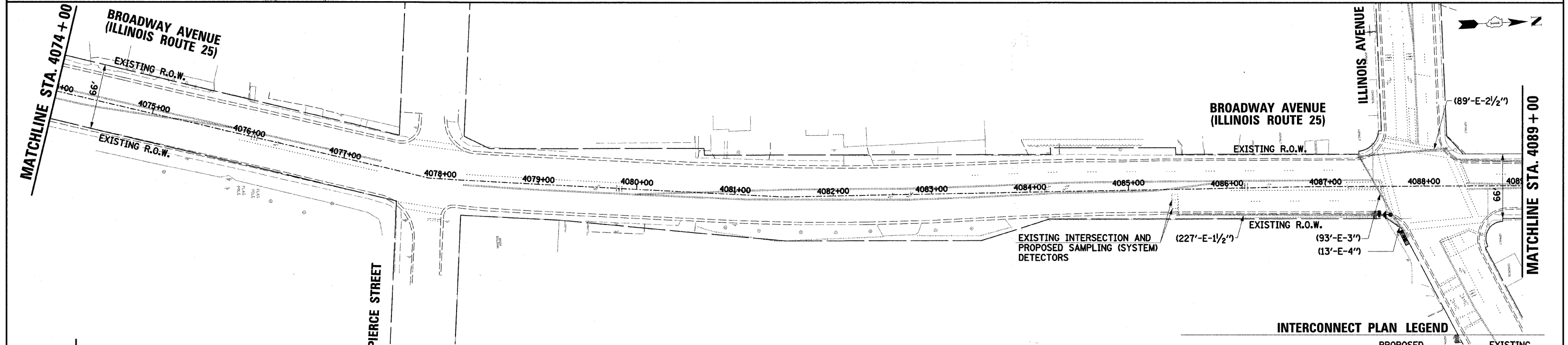


PLAN	SURVEYED	DATE
	PLOTTED	
	CHECKED	
	BY	
	NO.	



PROFILE	SURVEYED	DATE
	PLOTTED	
	CHECKED	
	BY	
	NO.	



**INTERCONNECT PLAN LEGEND**

	PROPOSED	EXISTING
CONTROLLER		
HANDHOLE		
DOUBLE HANDHOLE		
HEAVY-DUTY HANDHOLE		
G.S. CONDUIT IN TRENCH (T) OR PUSHED (P)		
DETECTOR LOOP		
UNIT DUCT	UD	
SYSTEM	S	
INTERSECTION	IP	I
MAST ARM ASSEMBLY AND POLE, STEEL		
WIRELESS ANTENNA		
VIDEO DETECTION ZONE		

THE TRAFFIC SIGNAL CONTROL EQUIPMENT FOR THIS PROJECT SHALL BE "ECONOLITE" TO MATCH THE EXISTING ADJACENT SYSTEM.

**RESTORATION OF WORK AREA:**  
 RESTORATION OF THE TRAFFIC SIGNAL WORK AREA SHALL BE INCIDENTAL TO THE RELATED PAY ITEM SUCH AS FOUNDATION, CONDUIT, HANDHOLE, TRENCH AND BACKFILL, ETC., AND NO EXTRA COMPENSATION SHALL BE ALLOWED UNLESS OTHERWISE NOTED. ALL ROADWAY SURFACES SUCH AS SHOULDERS, MEDIANS, SIDEWALKS, PAVEMENT, ETC. SHALL BE REPLACED IN KIND. ALL DAMAGE TO MOWED LAWNS SHALL BE REPLACED WITH AN APPROVED SOD, AND ALL DAMAGE TO UNMOWED FIELDS SHALL BE SEEDED IN ACCORDANCE WITH STANDARD SPECIFICATIONS 252 AND 250 RESPECTIVELY.

FILE NAME =	USER NAME = #USER#	DESIGNED -	REVISED -
#FILE#		DRAWN BAH	REVISED -
	PLOT SCALE = #SCALE#	CHECKED APS	REVISED -
	PLOT DATE = 6/8/2009	DATE JAN 16 2009	REVISED -

**STATE OF ILLINOIS  
 DEPARTMENT OF TRANSPORTATION**

**INTERCONNECT PLAN  
 (SHEET 3 OF 3)**

SCALE: SHEET NO. OF SHEETS STA. TO STA.

F.A.U. RTE.	SECTION	COUNTY	TOTAL SHEETS	SHEET NO.
2503	08-00272-00-TL	KANE	40	36
CONTRACT NO. 63177				
FED. ROAD DIST. NO. ILLINOIS FED. AID PROJECT				