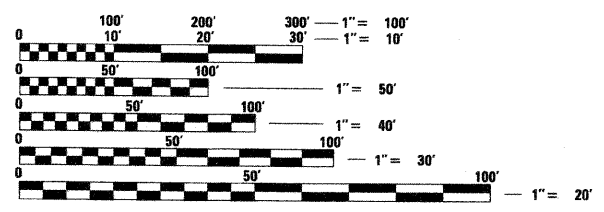


STATE OF ILLINOIS
DEPARTMENT OF TRANSPORTATION
DIVISION OF HIGHWAYS
**PLANS FOR PROPOSED
FEDERAL AID HIGHWAY**
CMAQ SIDEWALK PROJECT
GRAND AVENUE (CHURCH ROAD TO YORK ROAD) (FAU 1376)
SECTION No. 08-00086-00-SW
PROJECT NO.: CMM-9003(053)
VILLAGE OF BENSENVILLE
DUPAGE COUNTY
JOB NO. : C-91-492-08

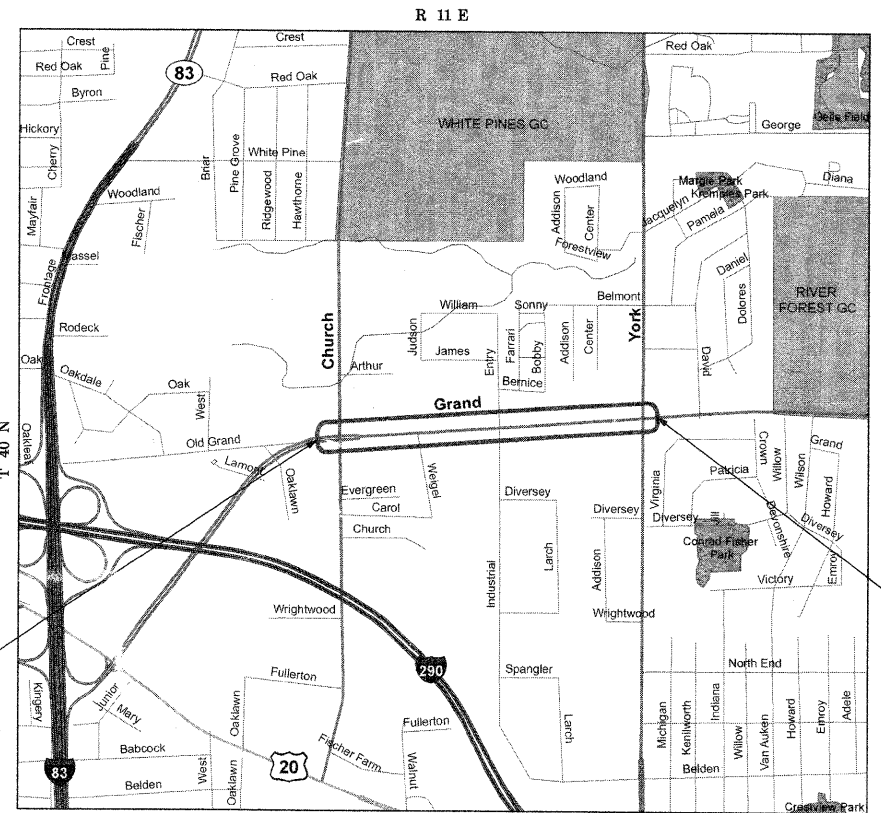
INDEX OF SHEETS

DESCRIPTION	SHEET NO.
TITLE SHEET	1
GENERAL NOTES & IDOT STANDARDS	2
SUMMARY OF QUANTITIES	3
TYPICAL SECTIONS	4
ALIGNMENT, TIES AND BENCHMARKS	5
EARTHWORK SCHEDULE	6
EXISTING CONDITIONS AND REMOVAL PLAN	7-10
SIDEWALK PLAN AND PROFILE	11-17
CONSTRUCTION DETAILS	18
CURB OR CURB AND GUTTER REMOVAL AND REPLACEMENT	19
DISTRICT ONE TYPICAL PAVEMENT MARKINGS	20
TRAFFIC CONTROL AND PROTECTION FOR SIDE ROADS, INTERSECTIONS, AND DRIVEWAYS	21
CROSS SECTIONS	22-33



FULL SIZE PLANS HAVE BEEN PREPARED USING STANDARD ENGINEERING SCALES. REDUCED SIZED PLANS WILL NOT CONFORM TO STANDARD SCALES. IN MAKING MEASUREMENTS ON REDUCED PLANS, THE ABOVE SCALES MAY BE USED.

J.U.L.I.E.
JOINT UTILITY LOCATION INFORMATION FOR EXCAVATION
1-800-892-0123
OR 811



PROJECT BEGINS
STATION 10 + 00

TRAFFIC DATA
ADT (YEAR) = NA
SPEED LIMIT = NA

PROJECT ENDS
STATION 47 + 67

LOCATION MAP
N.T.S.

GROSS LENGTH OF PROJECT = 3800 FEET (0.7 MI)
NET LENGTH OF PROJECT = 3800 FEET (0.7 MI)

CONTRACT NO. 63187

STATE OF ILLINOIS
DEPARTMENT OF TRANSPORTATION
DIVISION OF HIGHWAYS

APPROVED April 24 2009
VILLAGE OF BENSENVILLE
MAYOR

PASSED July 16 2009
Christina H. Hest
DISTRICT 1 ENGINEER OF LOCAL ROADS AND STREETS

RELEASING FOR BID
BASED ON LIMITED
REVIEW July 16 2009
Diane M. O'Keefe
DEPUTY DIRECTOR OF HIGHWAYS, REGION 1 ENGINEER

LEE M. FELL P.E.
ENGINEER
DATE 4/21/09

ILLINOIS REGISTRATION No. 062-053708
EXPIRATION DATE: 11/2009

CHRISTOPHER B. BURKE ENGINEERING, LTD.
9575 W. Higgins Road, Suite 600
Rosemont, Illinois 60018
(847) 823-0500
PROFESSIONAL DESIGN FIRM NO. 184-001175
EXPIRATION DATE: 04/30/2011

FIELD ENGINEER: MARLIN D. SOLOMON (847) 705-4407