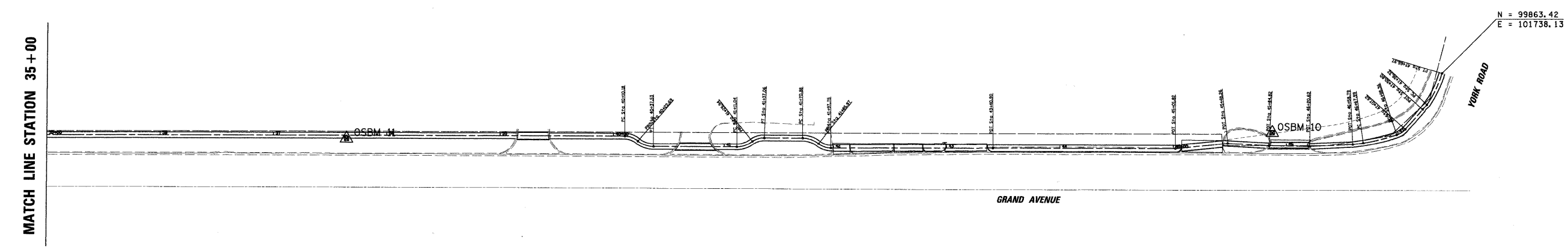
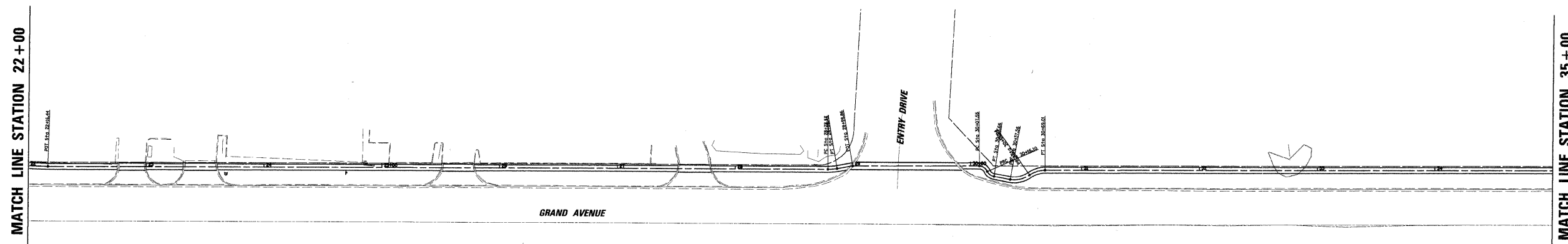
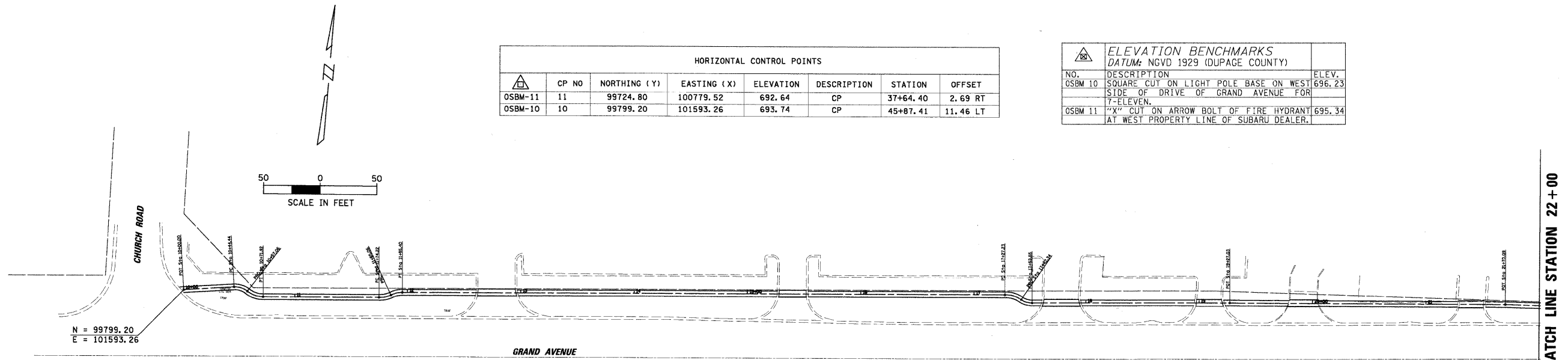


HORIZONTAL CONTROL POINTS							
CP NO	NORTHING (Y)	EASTING (X)	ELEVATION	DESCRIPTION	STATION	OFFSET	
OSBM-11	11	99724.80	100779.52	692.64	CP	37+64.40	2.69 RT
OSBM-10	10	99799.20	101593.26	693.74	CP	45+87.41	11.46 LT

ELEVATION BENCHMARKS DATUM: NGVD 1929 (DUPAGE COUNTY)		
NO.	DESCRIPTION	ELEV.
OSBM 10	SQUARE CUT ON LIGHT POLE BASE ON WEST SIDE OF DRIVE OF GRAND AVENUE FOR T-ELEVEN.	696.23
OSBM 11	"X" CUT ON ARROW BOLT OF FIRE HYDRANT AT WEST PROPERTY LINE OF SUBARU DEALER.	695.34



FILE NAME = N:\BENSENVILLE\080659\Cv\1\080659_BMK	USER NAME = MAGOLDEN	DESIGNED -	REVISED -	STATE OF ILLINOIS DEPARTMENT OF TRANSPORTATION	ALIGNMENT, TIES AND BENCHMARKS	F.A. RTE.	SECTION	COUNTY	TOTAL SHEETS	SHEET NO.
PLOT SCALE = 50'	CHECKED -	REVISED -	08-00086-00-SW			DUPAGE	33	5		
PLOT DATE = 4/30/2009	DATE -	REVISED -	CONTRACT NO. 63187							
						ILLINOIS FED. AID PROJECT				