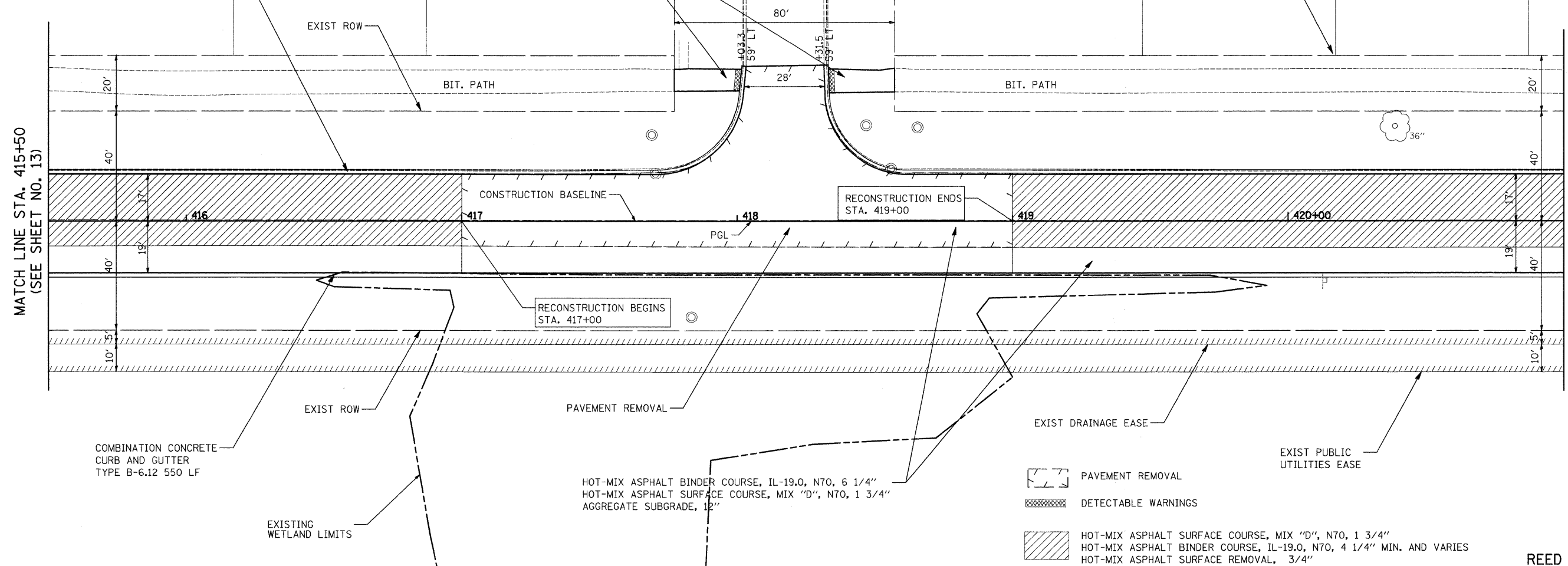


| | | | |
|------|--------------------|----|------|
| PLAN | SURVEYED | BY | DATE |
| | PLOTTED | | |
| | CHECKED | | |
| | REVISIONS | | |
| | NO. OF WAY CHECKED | | |
| | CADD FILE NAME | | |
| | NO. | | |

| | | | |
|---------|--------------------------|----|------|
| PROFILE | SURVEYED | BY | DATE |
| | PLOTTED | | |
| | CHECKED | | |
| | REVISIONS | | |
| | NO. OF WAY CHECKED | | |
| | STRUCTURE NOTATIONS CHKD | | |
| | NO. | | |

COMBINATION CONCRETE CURB AND GUTTER
TYPE B-6.12 573 LF
COMBINATION CONCRETE CURB AND GUTTER
REMOVAL 573 FT

BITUMINOUS BIKE PATH REMOVAL
HOT-MIX ASPHALT SURFACE COURSE, MIX "C", N50, 3"
SUB-BASE GRANULAR MATERIAL, TYPE B 6"



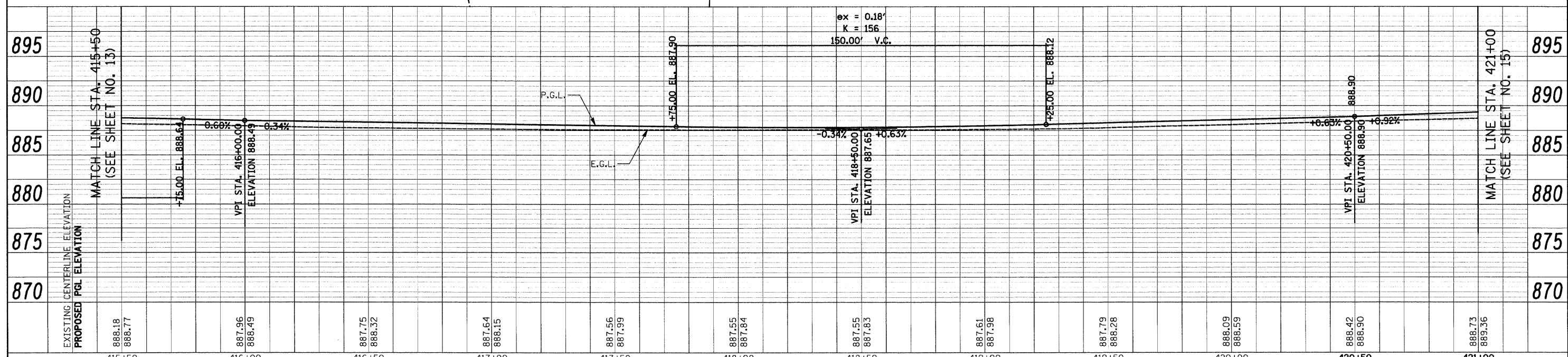
COMBINATION CONCRETE CURB AND GUTTER
TYPE B-6.12 550 LF

RECONSTRUCTION BEGINS
STA. 417+00

RECONSTRUCTION ENDS
STA. 419+00

HOT-MIX ASPHALT BINDER COURSE, IL-19.0, N70, 6 1/4"
HOT-MIX ASPHALT SURFACE COURSE, MIX "D", N70, 1 3/4"
AGGREGATE SUBGRADE, 12"

- PAVEMENT REMOVAL
- DETECTABLE WARNINGS
- HOT-MIX ASPHALT SURFACE COURSE, MIX "D", N70, 1 3/4"
HOT-MIX ASPHALT BINDER COURSE, IL-19.0, N70, 4 1/4" MIN. AND VARIES
HOT-MIX ASPHALT SURFACE REMOVAL, 3/4"



| | | | | | | | | | | | | |
|---|-----------------|----------------|-----------|---|---|-------------------------|----------------------------|--------------------|------------------------|----------------|-----------------|--------------|
| FILE NAME = J:\2213\oad\sheet\2213.P&P_04.dgn | USER NAME = ead | DESIGNED - EAD | REVISED - | STATE OF ILLINOIS DEPARTMENT OF TRANSPORTATION | REED ROAD - PLAN & PROFILE | | | F.A.U. RTE. 4075 | SECTION 08-00032-00-RS | COUNTY MCHENRY | TOTAL SHEETS 49 | SHEET NO. 14 |
| PLOT SCALE = 20.0000' / IN. | CHECKED - DNM | DRAWN - EDS | REVISED - | | SCALE 1"=20' | SHEET NO. 4 OF 6 SHEETS | STA. 415+50 TO STA. 421+00 | CONTRACT NO. 63193 | | | | |
| PLOT DATE = 5/1/2009 | DATE - 5/1/09 | CHECKED - DNM | REVISED - | | FED. ROAD DIST. NO. ILLINOIS FED. AID PROJECT | | | | | | | |
| | | DATE - 5/1/09 | REVISED - | | | | | | | | | |