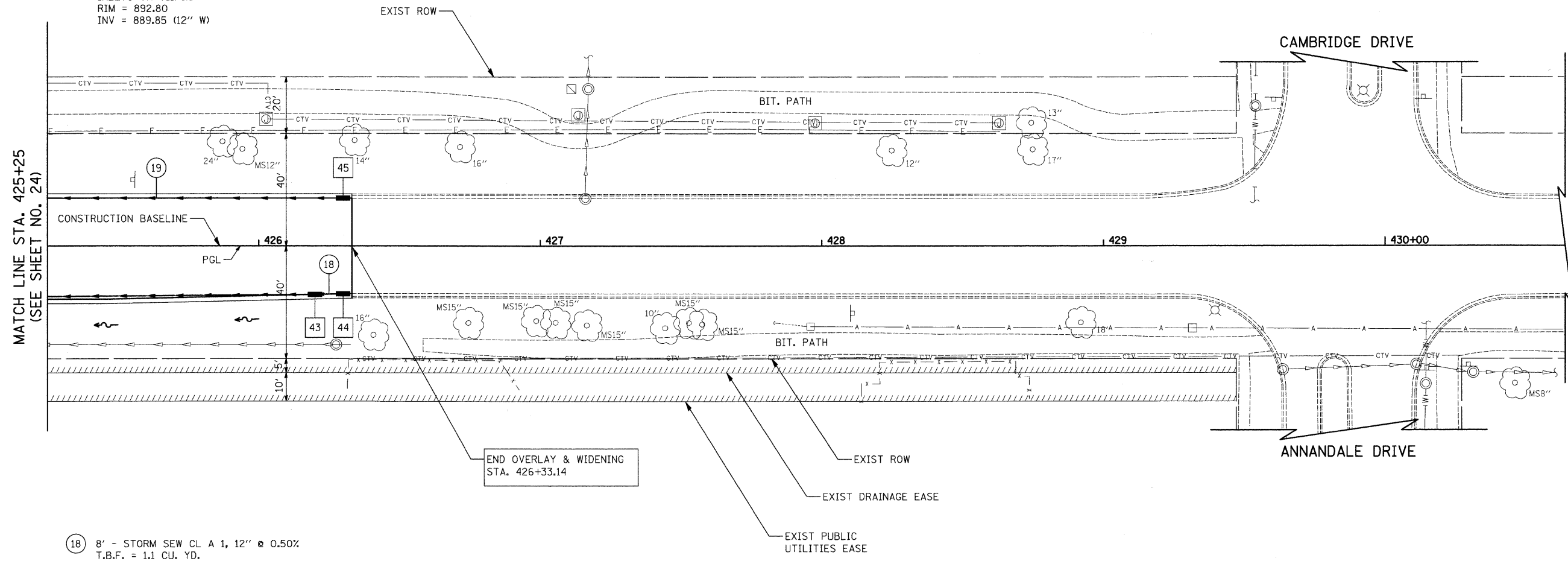


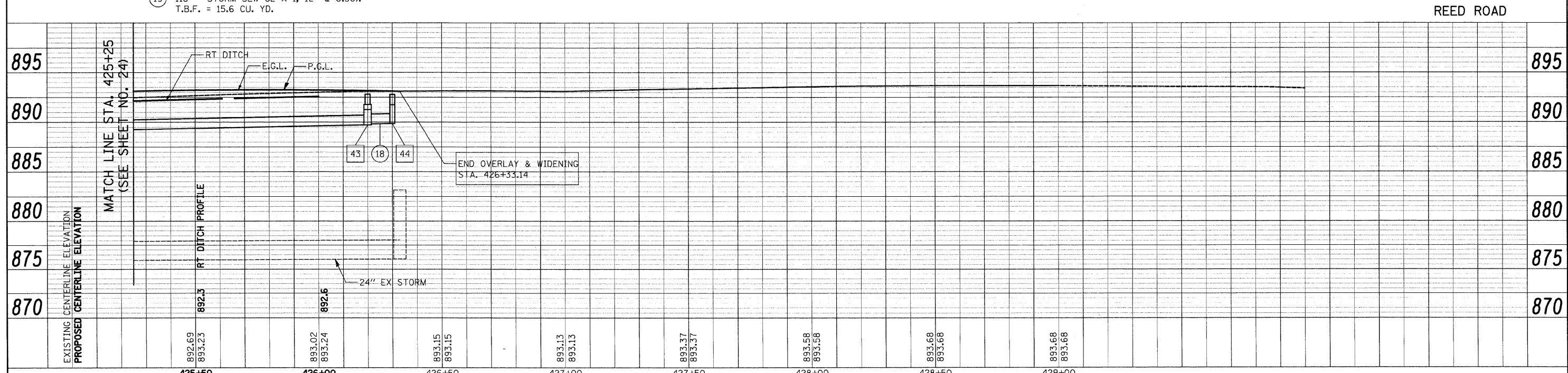
- 43 STA. 426+20, 17.4' RT.  
RD INLETS TB T11F&G  
RIM = 892.83  
INV = 889.71 (12" W)  
INV = 889.81 (12" E)
- 44 STA. 426+30, 17.1' RT.  
INLETS TA T11F&G  
RIM = 892.80  
INV = 889.85 (12" W)
- 45 STA. 426+30, 17.0' LT.  
INLETS TA T11F&G  
RIM = 892.80  
INV = 889.80 (12" W)



- 18 8' - STORM SEW CL A 1, 12" @ 0.50%  
T.B.F. = 1.1 CU. YD.
- 19 118' - STORM SEW CL A 1, 12" @ 0.50%  
T.B.F. = 15.6 CU. YD.

PLAN	SURVEYED	BY	DATE
	PLOTTED		
	CHECKED		
	RT. OF WAY CHECKED		
	NO. _____		
	DATE _____		
	CADD FILE NAME		

PROFILE	SURVEYED	BY	DATE
	PLOTTED		
	CHECKED		
	RT. OF WAY CHECKED		
	NO. _____		
	DATE _____		
	STRUCTURE NOTATIONS CHKD		



FILE NAME = J:\2213\oad\sheet\2213.D&U.06.dgn	USER NAME = ead	DESIGNED - EAD	REVISED -	<b>STATE OF ILLINOIS DEPARTMENT OF TRANSPORTATION</b>	<b>REED ROAD - DRAINAGE AND UTILITIES</b>	F.A.U. RTE. 4075	SECTION 08-00032-00-RS	COUNTY MCHENRY	TOTAL SHEETS 49	SHEET NO. 25	
PLOT SCALE = 20.0000' / IN.	DATE = 5/1/2009	DRAWN - EDS	REVISED -			SCALE 1"=20'	SHEET NO. 6 OF 6 SHEETS	STA. 425+25 TO STA. 430+00	CONTRACT NO. 63193		
		CHECKED - DNM	REVISED -			FED. ROAD DIST. NO. ILLINOIS FED. AID PROJECT					
		DATE = 5/1/09	REVISED -								