

F.A.U. RTE.	SECTION	COUNTY	TOTAL SHEETS	SHEET NO.
1680	05-00038-00-PV	KANE/KENDALL	130	1

STATE OF ILLINOIS
DEPARTMENT OF TRANSPORTATION
DIVISION OF HIGHWAYS

PLANS FOR PROPOSED FEDERAL AID HIGHWAY

F.A.U. ROUTE 1680 (BASELINE ROAD)
SECTION 05-00038-00-PV
PROJECT HPP-0887(003)
JOB C-91-278-06

PAVEMENT CONSTRUCTION AND UTILITY IMPROVEMENTS KANE AND KENDALL COUNTIES



LOCATION OF SECTION INDICATED THUS: - ■■■ -

STATE OF ILLINOIS DEPARTMENT OF TRANSPORTATION
DIVISION OF HIGHWAYS

APPROVED July 10, 2009
DATE
Michael P. Stalder
VILLAGE OF MONTGOMERY, DIRECTOR OF PUBLIC WORKS

PASSED July 16, 2009
DATE
Chris H. Christopher
DISTRICT 11 ENGINEER OF LOCAL ROADS & STREETS

RELEASING FOR BID
BASED ON LIMITED
REVIEW July 16, 2009
DATE
Diane M. O'Keefe
DEPUTY DIRECTOR OF HIGHWAYS, REGION 1 ENGINEER

APPROVED ORCHARD
ROAD WIDENING AND
SIGNAL July 13, 2009
DATE
Ronald G. Naylor
KENDALL COUNTY HIGHWAY DEPARTMENT, COUNTY ENGINEER

ENGINEER'S CERTIFICATION

I HEREBY CERTIFY THAT THESE PLANS WERE PREPARED UNDER MY DIRECT SUPERVISION.

DATED AT SUGAR GROVE, ILLINOIS,

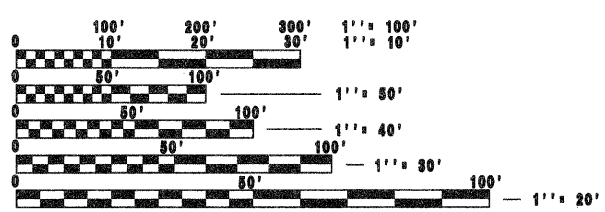
THIS 10th DAY OF July

Ronald G. Naylor
RONALD G. NAYLOR, P.E.
ILLINOIS LICENSED PROFESSIONAL ENGINEER NO. 062-028491
EXPIRATION DATE: 11/30/09

FIELD ENGINEER CONTACT: MARILYN SOLOMON 847-705-4407
CONSULTING ENGINEER: ENGINEERING ENTERPRISES, INC. CONTACT: RON NAYLOR 630-466-6700

FOR INDEX OF SHEETS AND
PAVEMENT DESIGN INFORMATION,
STRUCTURAL PAVEMENT DESIGN
INFORMATION, SPEED LIMITS
AND ADT SEE SHEET NO. 2

PROJECT LOCATED IN
VILLAGE OF MONTGOMERY

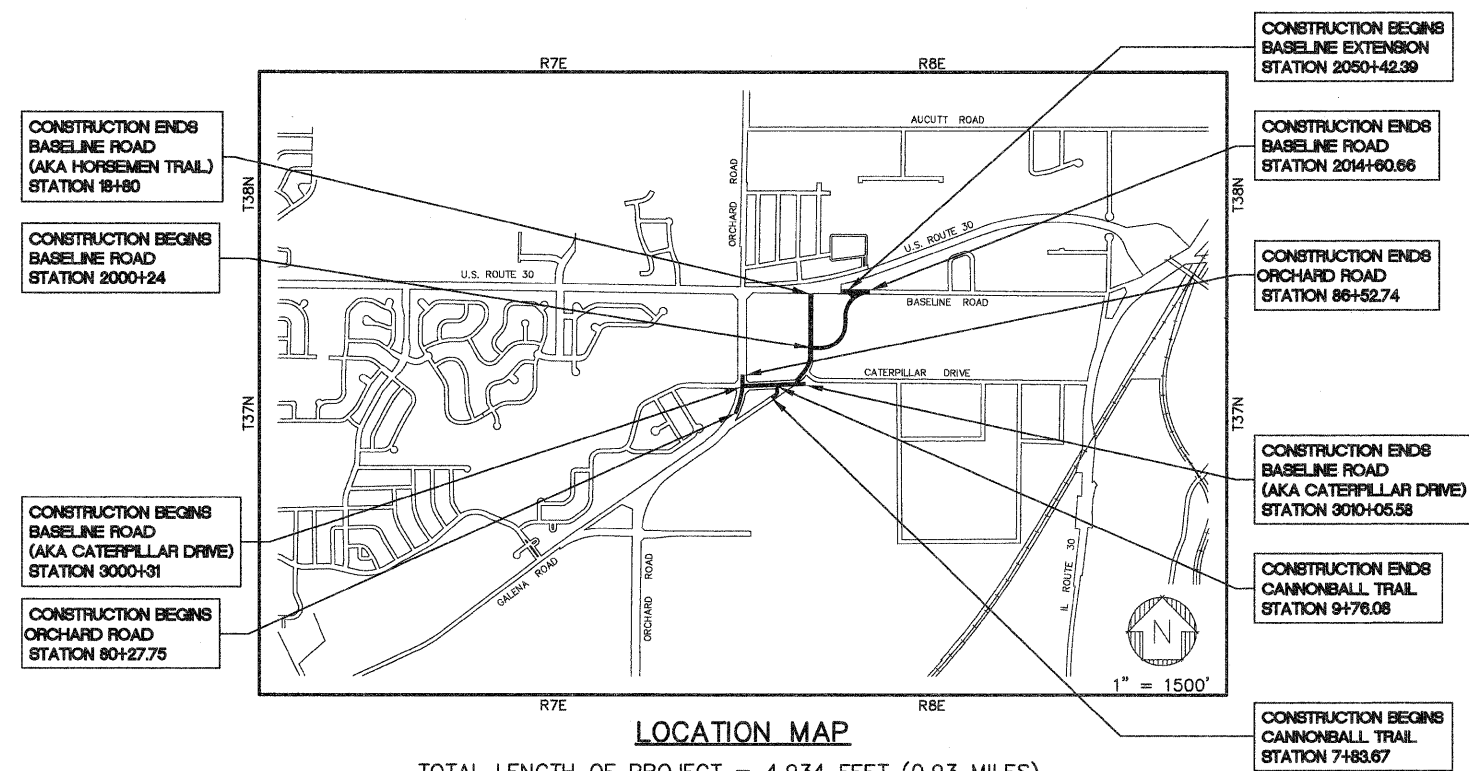


FULL SIZE PLANS HAVE BEEN PREPARED USING STANDARD
ENGINEERING SCALES. REDUCED SIZED PLANS WILL NOT
CONFORM TO STANDARD SCALES. IN MAKING MEASUREMENTS
ON REDUCED PLANS, THE ABOVE SCALES MAY BE USED.

J.U.L.I.E.
JOINT UTILITY LOCATION INFORMATION FOR EXCAVATION
1-800-892-0123

CONTRACT NO. 63207

Engineering Enterprises, Inc.
CONSULTING ENGINEERS
52 Wheeler Road
Sugar Grove, Illinois 60554
Phone: (630) 466-6700



LOCATION MAP

TOTAL LENGTH OF PROJECT = 4,934 FEET (0.93 MILES)
BASELINE ROAD = 1,437 FEET (0.27 MILES)
BASELINE ROAD (AKA HORSEMEN TRAIL) = 1,497 FEET (0.28 MILES)
BASELINE ROAD (AKA CATERPILLAR DRIVE) = 975 FEET (0.18 MILES)
ORCHARD ROAD = 625 FEET (0.12 MILES)
CANNONBALL TRAIL = 192 FEET (0.04 MILES)
BASELINE EXTENSION = 208 FEET (0.04 MILES)

**PRINTED BY THE AUTHORITY
OF THE STATE OF ILLINOIS**

Plotted: July 9, 2009 @ 2:55 PM By: Kris Pung - Tab: 01 Cover 2/2/04

Path: \\S05P001\007254\DWG\FINAL_ENG\007254-CR