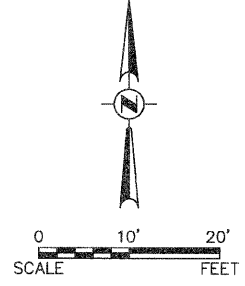


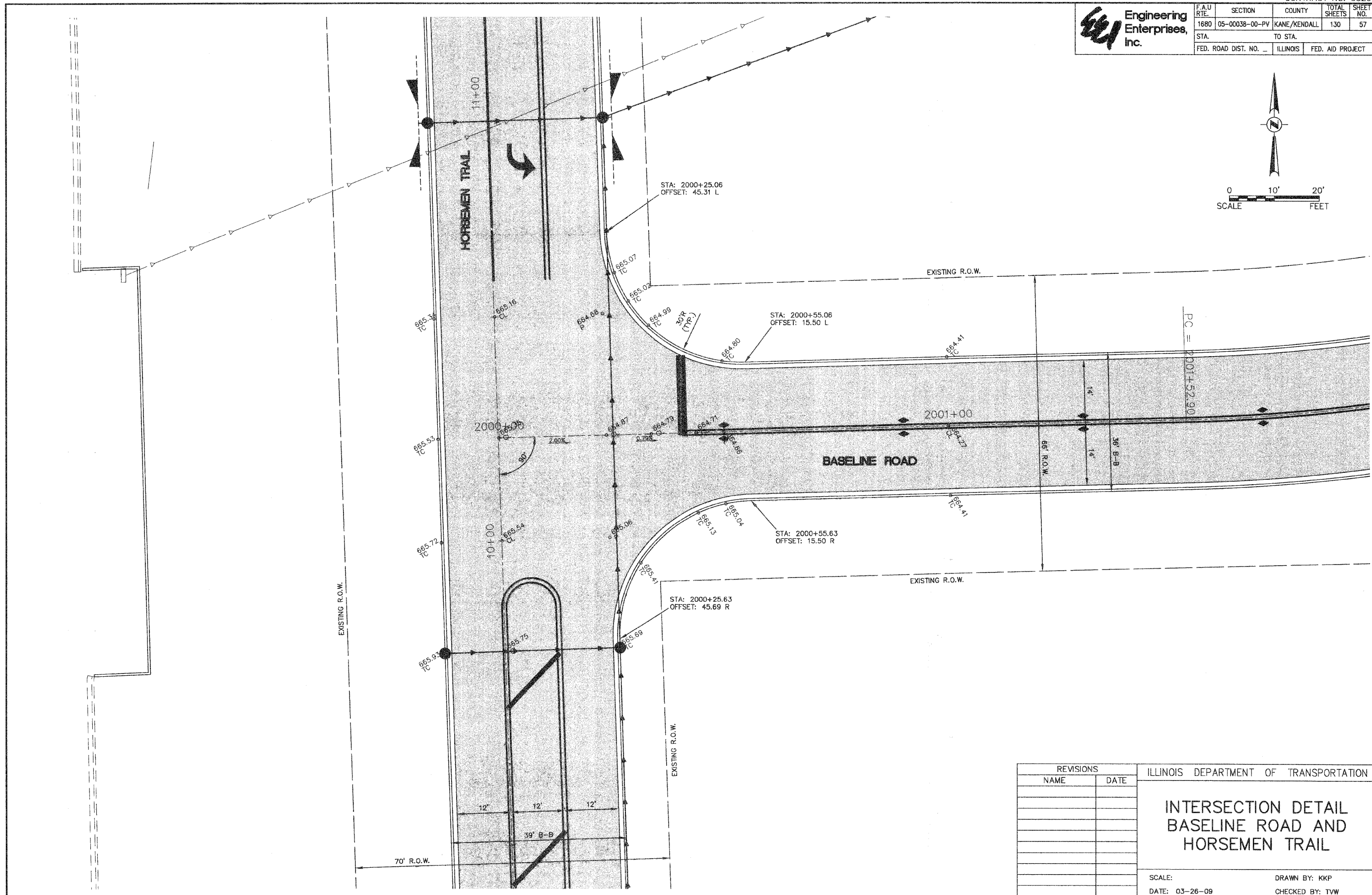


F.A.U. RTE.	SECTION	COUNTY	TOTAL SHEETS	SHEET NO.
1680	05-00038-00-PV	KANE/KENDALL	130	57
STA.		TO STA.		
FED. ROAD DIST. NO. -		ILLINOIS	FED. AID PROJECT	



PLAN	DATE
SUBMITTED	
PLOTTED	
ALIGNED	
CHECKED	
BY	
NO. _____	
NOTE BOOK	
NO. _____	
FILE NAME	

PROFILE	DATE
SUBMITTED	
PLOTTED	
GRADES CHECKED	
STRUCTURE NOTATIONS CHKD	
BY	
NO. _____	



REVISIONS	
NAME	DATE

ILLINOIS DEPARTMENT OF TRANSPORTATION

**INTERSECTION DETAIL
BASELINE ROAD AND
HORSEMEN TRAIL**

SCALE: _____ DRAWN BY: KKP
DATE: 03-26-09 CHECKED BY: TVW