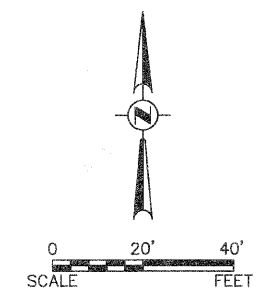


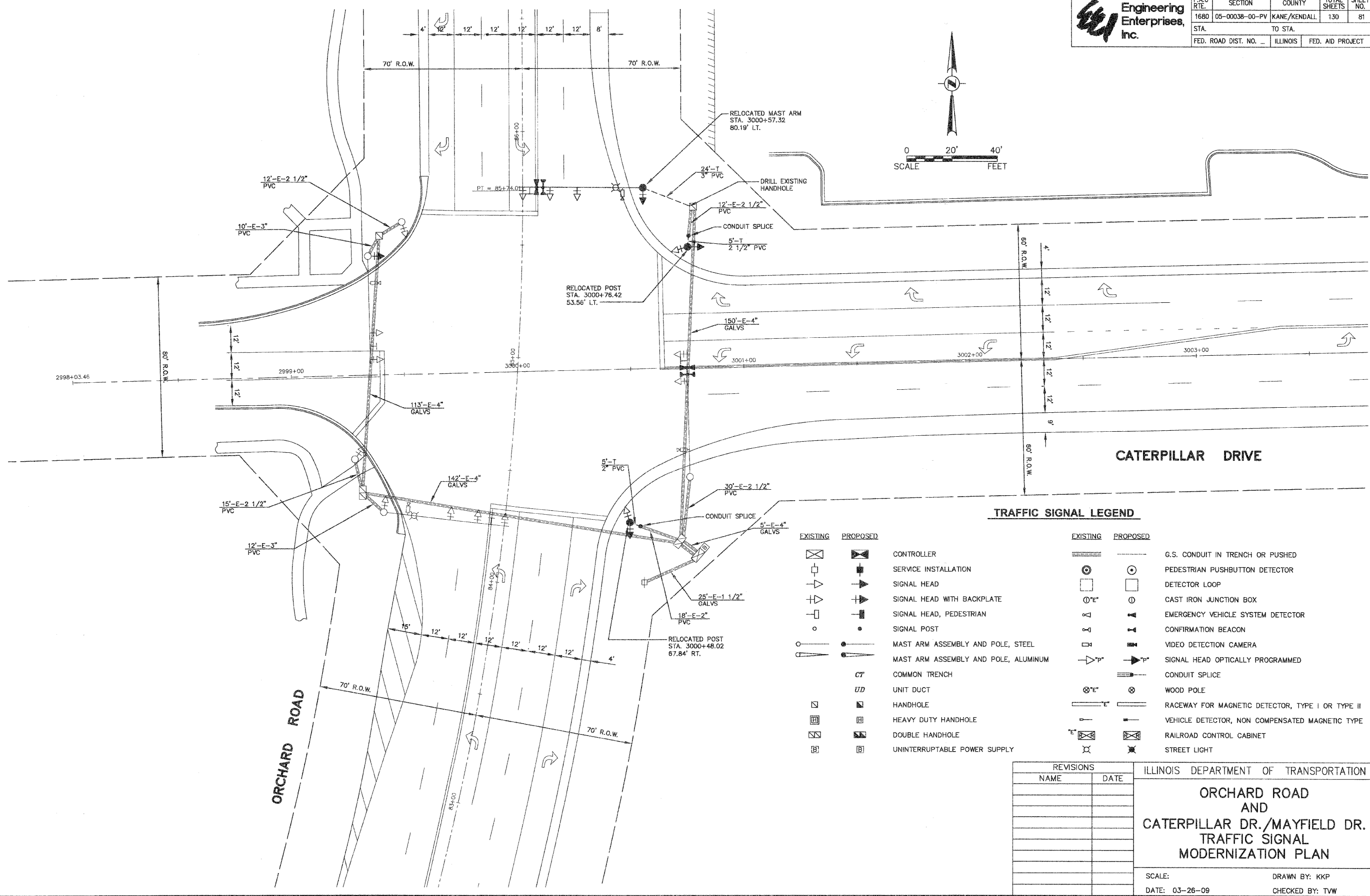


F.A.U. RTE.	SECTION	COUNTY	TOTAL SHEETS	SHEET NO.
1680	05-00038-00-PV	KANE/KENDALL	130	81
STA.	TO STA.			
FED. ROAD DIST. NO.	ILLINOIS	FED. AID PROJECT		



PLAN	DATE
BY	
REVISIONS	
NO.	
DATE	
BY	
REVISIONS	
NO.	
DATE	
BY	

PROFILE	DATE
BY	
REVISIONS	
NO.	
DATE	
BY	
REVISIONS	
NO.	
DATE	
BY	



TRAFFIC SIGNAL LEGEND

EXISTING	PROPOSED	EXISTING	PROPOSED
			G.S. CONDUIT IN TRENCH OR PUSHED
			PEDESTRIAN PUSHBUTTON DETECTOR
			DETECTOR LOOP
			CAST IRON JUNCTION BOX
			EMERGENCY VEHICLE SYSTEM DETECTOR
			CONFIRMATION BEACON
			VIDEO DETECTION CAMERA
			SIGNAL HEAD OPTICALLY PROGRAMMED
			CONDUIT SPLICE
			WOOD POLE
			RACEWAY FOR MAGNETIC DETECTOR, TYPE I OR TYPE II
			VEHICLE DETECTOR, NON COMPENSATED MAGNETIC TYPE
			RAILROAD CONTROL CABINET
			STREET LIGHT

REVISIONS	
NAME	DATE

ILLINOIS DEPARTMENT OF TRANSPORTATION

ORCHARD ROAD AND CATERPILLAR DR./MAYFIELD DR. TRAFFIC SIGNAL MODERNIZATION PLAN

SCALE: DATE: 03-26-09

DRAWN BY: KKP
CHECKED BY: TWV