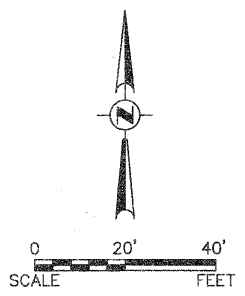




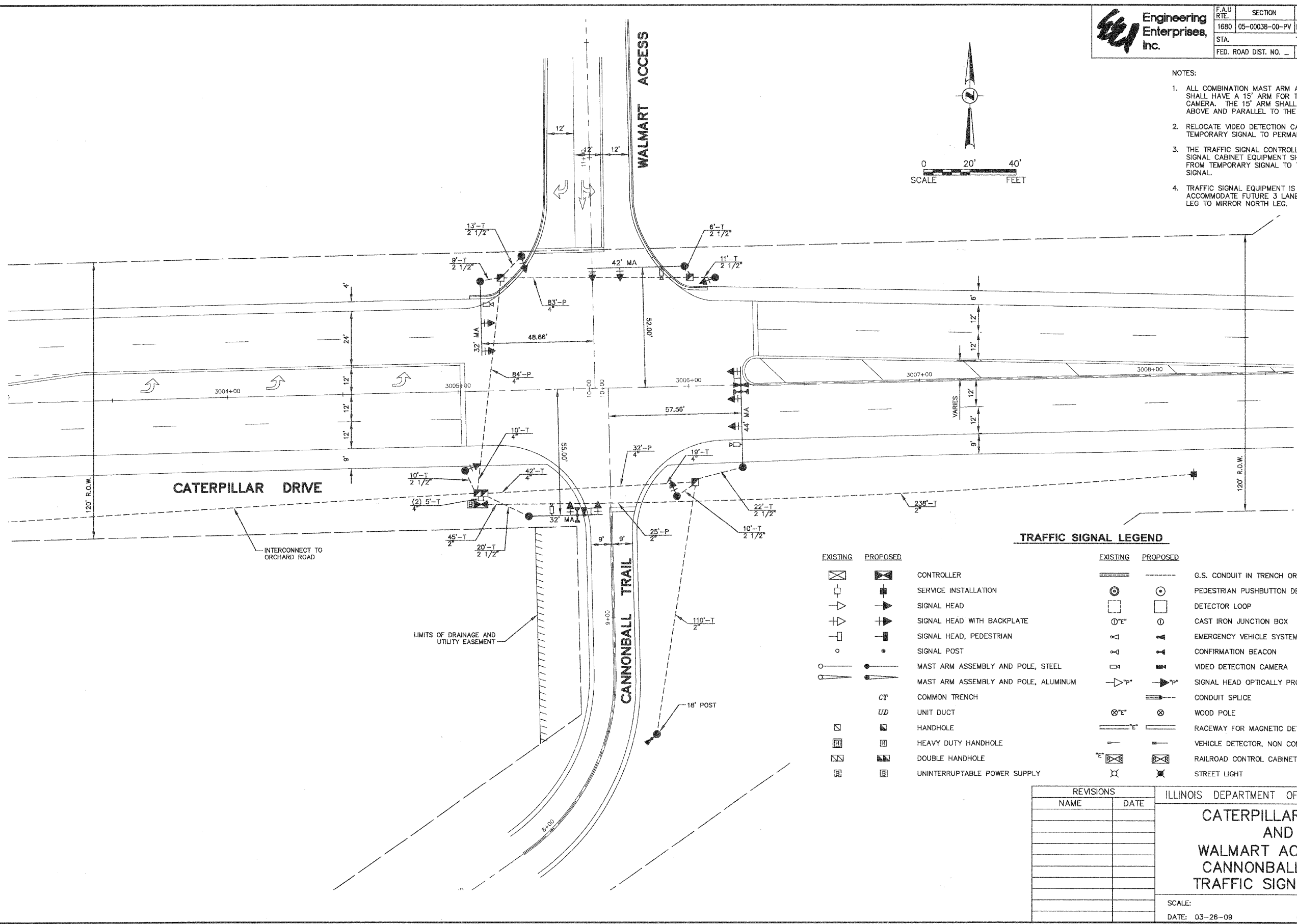
F.A.U. RTE.	SECTION	COUNTY	TOTAL SHEETS	SHEET NO.
1680	05-00038-00-PV	KANE/KENDALL	130	86
STA.		TO STA.		
FED. ROAD DIST. NO. -		ILLINOIS	FED. AID PROJECT	

- NOTES:
- ALL COMBINATION MAST ARM ASSEMBLIES AND POLES SHALL HAVE A 15' ARM FOR THE VIDEO DETECTION CAMERA. THE 15' ARM SHALL BE ALIGNED DIRECTLY ABOVE AND PARALLEL TO THE MAST ARM.
 - RELOCATE VIDEO DETECTION CAMERAS FROM TEMPORARY SIGNAL TO PERMANENT SIGNAL.
 - THE TRAFFIC SIGNAL CONTROLLER AND RELATED SIGNAL CABINET EQUIPMENT SHALL BE RELOCATED FROM TEMPORARY SIGNAL TO THE PERMANENT SIGNAL.
 - TRAFFIC SIGNAL EQUIPMENT IS LOCATED TO ACCOMMODATE FUTURE 3 LANE SECTION ON SOUTH LEG TO MIRROR NORTH LEG.



PLAN	DATE
REVISIONS	BY
PLOTTED	
CHECKED	
NO. _____	

PROFILE	DATE
REVISIONS	BY
PLOTTED	
CHECKED	
NO. _____	



TRAFFIC SIGNAL LEGEND

EXISTING	PROPOSED	EXISTING	PROPOSED
			G.S. CONDUIT IN TRENCH OR PUSHED
			PEDESTRIAN PUSHBUTTON DETECTOR
			DETECTOR LOOP
			CAST IRON JUNCTION BOX
			EMERGENCY VEHICLE SYSTEM DETECTOR
			CONFIRMATION BEACON
			VIDEO DETECTION CAMERA
			SIGNAL HEAD OPTICALLY PROGRAMMED
			CONDUIT SPLICE
			WOOD POLE
			RACEWAY FOR MAGNETIC DETECTOR, TYPE I OR TYPE II
			VEHICLE DETECTOR, NON COMPENSATED MAGNETIC TYPE
			RAILROAD CONTROL CABINET
			STREET LIGHT

REVISIONS	
NAME	DATE

ILLINOIS DEPARTMENT OF TRANSPORTATION

CATERPILLAR DRIVE AND WALMART ACCESS / CANNONBALL TRAIL TRAFFIC SIGNAL PLAN

SCALE: _____ DRAWN BY: KKP

DATE: 03-26-09 CHECKED BY: TWV