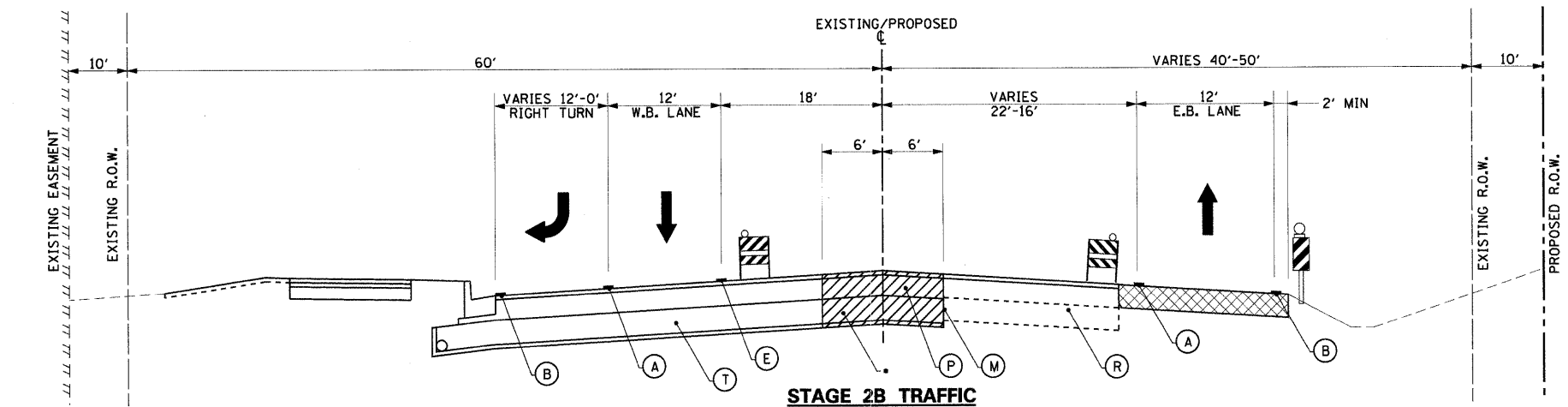
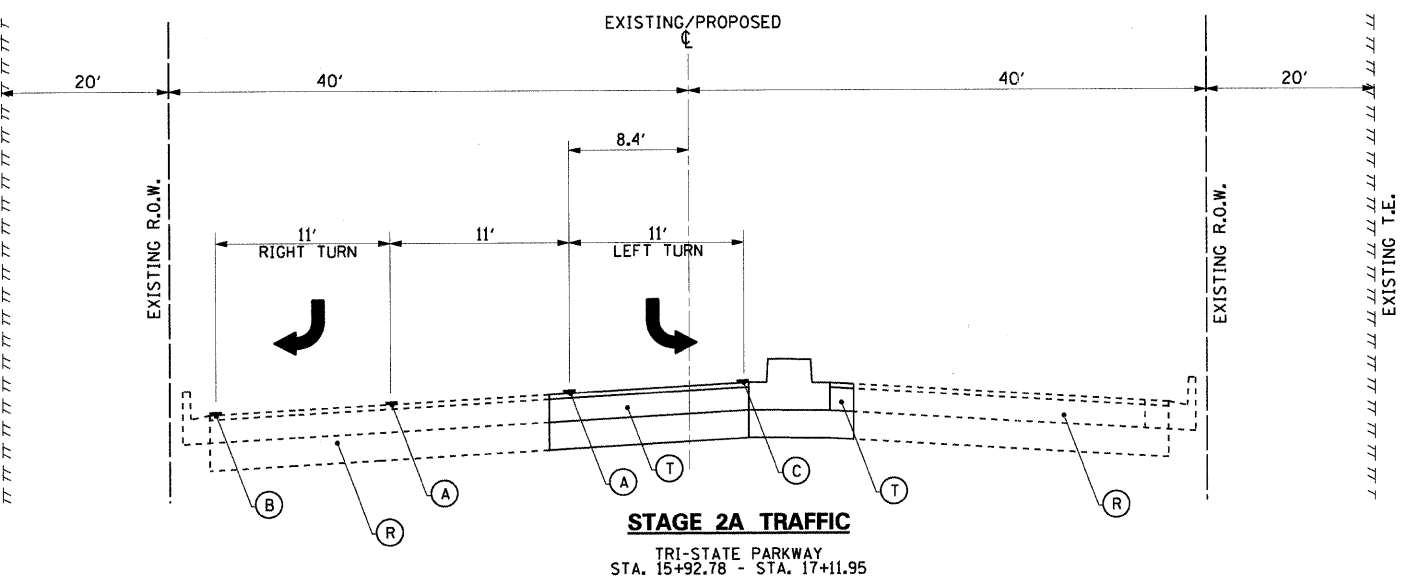


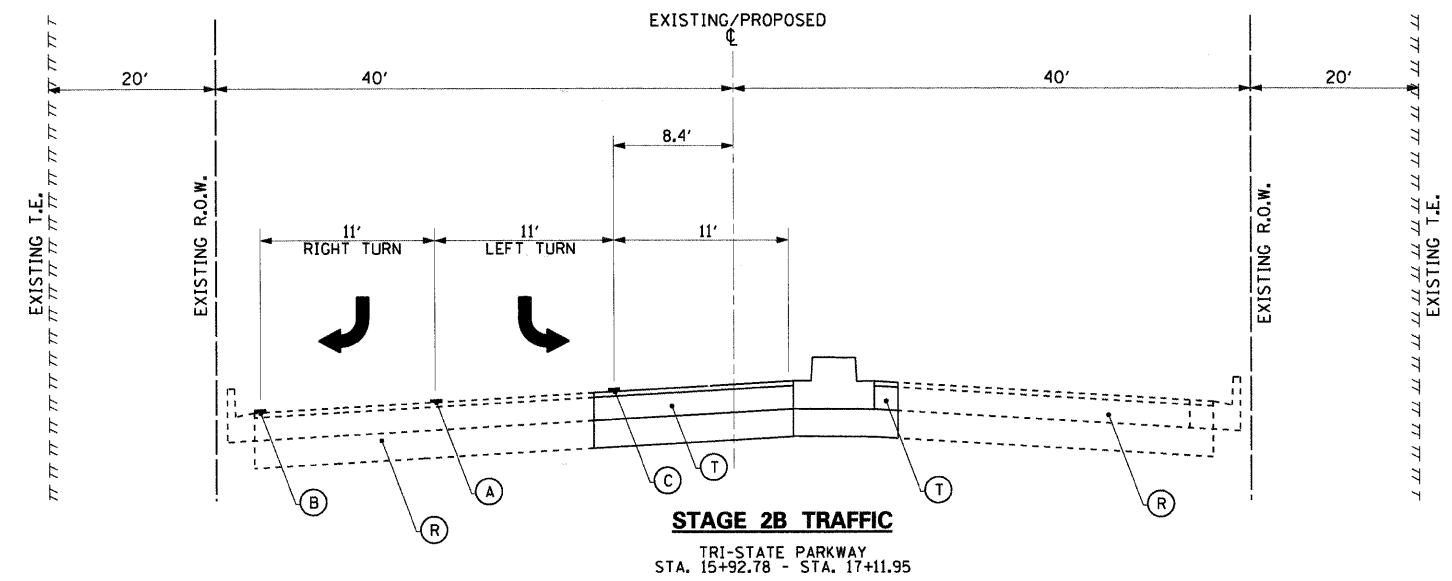
STAGE 2A TRAFFIC
 WASHINGTON STREET
 STA. 175+51.82 TO STA. 179+71.76



STAGE 2B TRAFFIC
 WASHINGTON STREET
 STA. 142+23.29 TO STA. 146+49.87
 • CONSTRUCT PAVEMENT FROM STA. 141+45.76 TO STA. 146+49.87

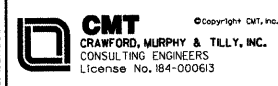


STAGE 2A TRAFFIC
 TRI-STATE PARKWAY
 STA. 15+92.78 - STA. 17+11.95



STAGE 2B TRAFFIC
 TRI-STATE PARKWAY
 STA. 15+92.78 - STA. 17+11.95

LEGEND	
(A) TEMPORARY PAVEMENT MARKING - LINE 6" (SOLID, WHITE, 70300240)	(N) PROPOSED SHOULDER
(B) TEMPORARY PAVEMENT MARKING - LINE 4" (SOLID, WHITE, 70300220)	(O) EXISTING SHOULDER
(C) TEMPORARY PAVEMENT MARKING - LINE 4" (SOLID, YELLOW, 70300220)	(P) PROPOSED PAVEMENT
(D) TEMPORARY PAVEMENT MARKING - LINE 6" (SKIP-DASH, WHITE, 70300240)	(R) EXISTING PAVEMENT
(E) TEMPORARY PAVEMENT MARKING - LINE 4" (SOLID, DOUBLE YELLOW, 70300220)	(S) COMPLETED SHOULDER
(F) TEMPORARY PAVEMENT MARKING - LINE 6" (2' DASH 6' SKIP, WHITE, 70300240)	(T) COMPLETED PAVEMENT
(G) TEMPORARY PAVEMENT MARKING - LINE 12" (SOLID, YELLOW, 70300260)	
(H) THERMOPLASTIC PAVEMENT MARKING LINE, 4", DOUBLE, YELLOW, 7800105)	
(I) THERMOPLASTIC PAVEMENT MARKING LINE, 6", SOLID, WHITE, 7800115)	
(J) THERMOPLASTIC PAVEMENT MARKING LINE, 6", 2' DASH 6' SKIP, WHITE, 7800115)	
(K) THERMOPLASTIC PAVEMENT MARKING LINE, 6", SKIP-DASH, WHITE, 7800115)	
(L) THERMOPLASTIC PAVEMENT MARKING LINE, 12", SOLID, YELLOW, 7800140)	
(M) FULL DEPTH SAW CUTS (44213200)	
TEMPORARY BARRIER WALL	PROPOSED SHOULDER
DIRECTION OF TRAFFIC	EXISTING SHOULDER
WORK ZONE	PROPOSED PAVEMENT
TEMPORARY PAVEMENT CONSTRUCTED IN PREVIOUS STAGE	EXISTING PAVEMENT
EXISTING PAVEMENT	COMPLETED SHOULDER
PROPOSED PAVEMENT	COMPLETED PAVEMENT
VERTICAL PANEL, POST MOUNTED	TYPE II BARRICADES WITH STEADY BURNING LIGHT



USER NAME = Steve Prange
 PLOT SCALE = 20,0000' / IN.
 PLOT DATE = 05/29/09

DESIGNED - SJP
 DRAWN - SJP
 CHECKED - KDN
 DATE - 05/29/09

REVISED -
 REVISED -
 REVISED -
 REVISED -



MAINTENANCE OF TRAFFIC - STAGE 2A AND 2B
TYPICAL SECTIONS
 SCALE: N.T.S. SHEET NO. 15 OF 24 SHEETS STA. N/A TO STA. N/A

F.A. RTE.	SECTION	COUNTY	TOTAL SHEETS	SHEET NO.
1016	02-00110-12-WR	LAKE	206	42
CONTRACT NO. 63209				
FED. ROAD DIST. NO. 1 ILLINOIS FED. AID PROJECT				