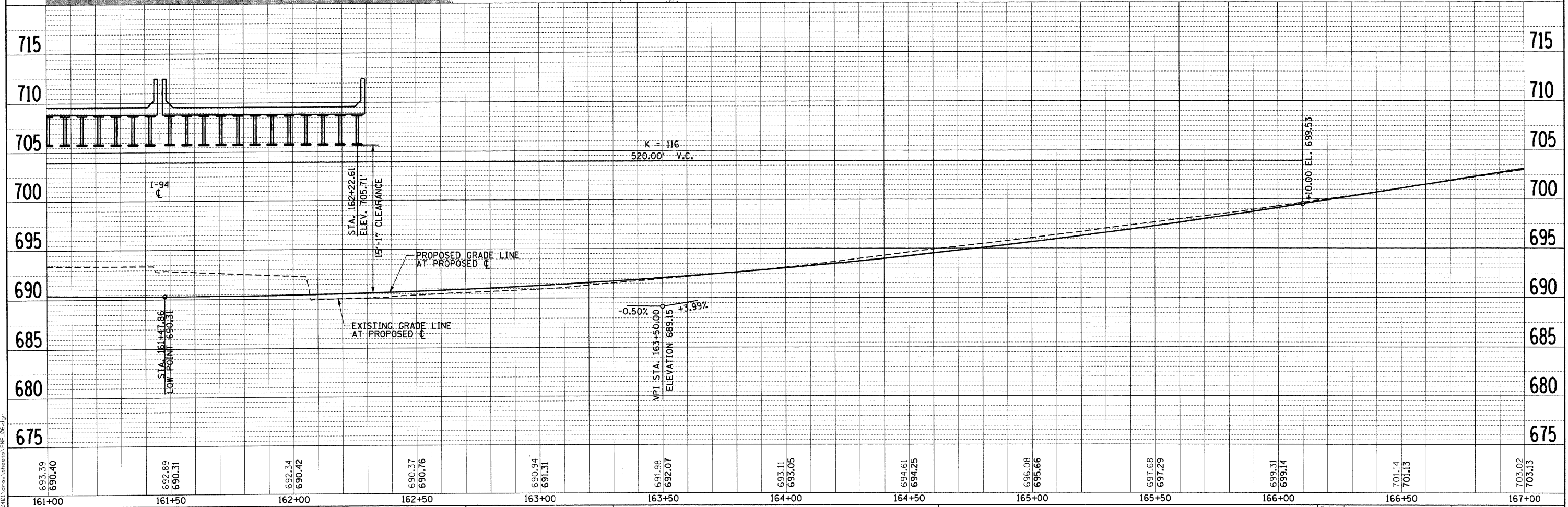
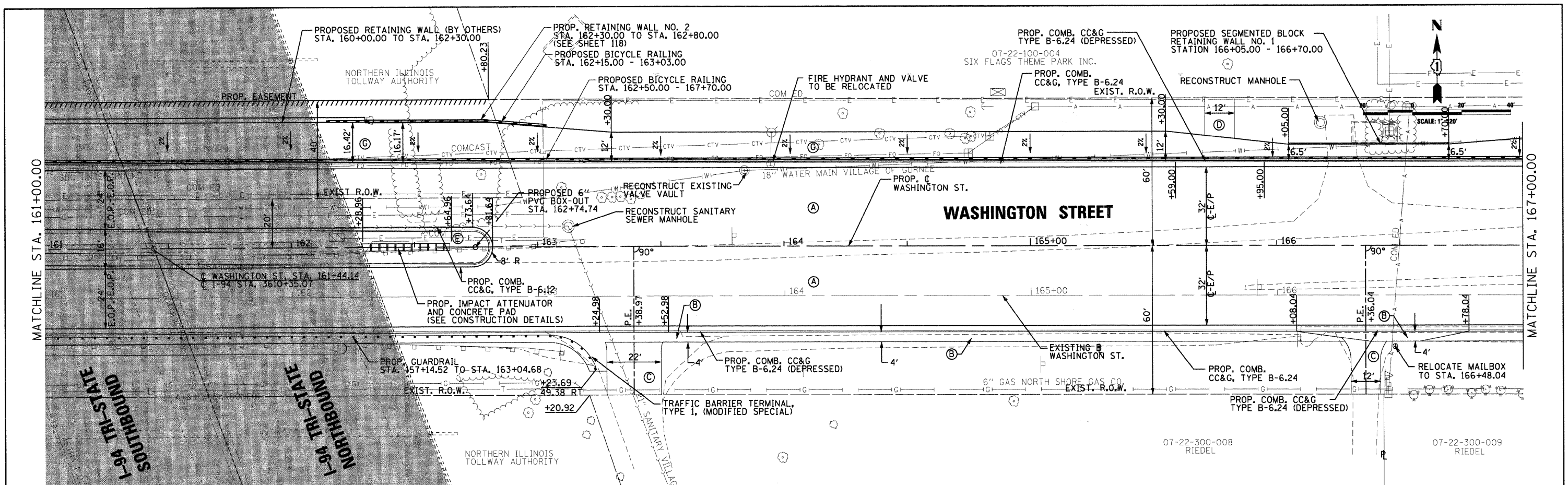


PLAN	SURVEYED	DATE
NOTE BOOK	ALIGNED	BY
NO.	CHECKED	
	RT. OF WAY	
	CHECKED	
	NO.	
	DATE	

PROFILE	SURVEYED	DATE
NOTE BOOK	ALIGNED	BY
NO.	CHECKED	
	RT. OF WAY	
	CHECKED	
	NO.	
	DATE	

FILE NAME = I:\projects\0822\0822\Drawings\Prop 08.dgn



693.39 690.40	692.89 690.31	692.34 690.42	690.37 690.76	690.94 691.31	691.98 692.07	693.11 693.05	694.61 694.25	696.08 695.66	697.68 697.29	699.31 699.14	701.14 701.13	703.02 703.13
161+00	161+50	162+00	162+50	163+00	163+50	164+00	164+50	165+00	165+50	166+00	166+50	167+00

CMT
CRAWFORD, MURPHY & TILLY, INC.
CONSULTING ENGINEERS
License No. 184-00063

USER NAME = Monica Crislin	DESIGNED - SJP	REVISIONS
DATE = 07/15/09	DRAWN - SJP	REVISIONS
	CHECKED - KDN	REVISIONS
	DATE = 07/15/09	REVISIONS



PROPOSED ROADWAY PLAN & PROFILE		
SCALE: 20'=1"	SHEET NO. 6 OF 10 SHEETS	STA. 161+00 TO STA. 167+00

F.A. RTE.	SECTION	COUNTY	TOTAL SHEETS	SHEET NO.
1016	02-00110-12-WR	LAKE	206	62
FED. ROAD DIST. NO. 1 ILLINOIS FED. AID PROJECT			CONTRACT NO. 63209	