

**EXISTING EQUIPMENT TO BE REMOVED LEGEND**

- ▲ EXISTING TRAFFIC SIGNAL HEAD TO BE REMOVED
- ▲+ EXISTING TRAFFIC SIGNAL HEAD WITH BACK PLATE TO BE REMOVED
- ⊠ EXISTING SERVICE INSTALLATION TO BE REMOVED
- EXISTING SIGNAL POST AND FOUNDATION TO BE REMOVED
- ⊠ EXISTING IMAGE SENSOR TO BE REMOVED
- ⊠ EXISTING TEMPORARY WOOD POLE WITH LUMINAIRE AND MAST TO BE REMOVED
- ⊠ EXISTING CONTROLLER AND FOUNDATION TO BE REMOVED
- ⊠ EXISTING HANDHOLE TO BE REMOVED
- ⊠ EXISTING DOME PAN/TILT/ZOOM (PTZ) CAMERA TO BE REMOVED
- ⊠ EXISTING PEDESTRIAN SIGNAL HEAD TO BE REMOVED
- ⊠ EXISTING PEDESTRIAN PUSH BUTTON TO BE REMOVED
- ⊠ EMERGENCY VEHICLE LIGHT DETECTOR TO BE REMOVED
- ⊠ CONFIRMATION BEACON TO BE REMOVED
- ⊠ EXISTING HEAVY-DUTY HANDHOLE TO BE REMOVED
- EXISTING SPAN WIRE, TETHER WIRE, AND CABLE TO BE REMOVED

**TEMPORARY TRAFFIC SIGNAL LEGEND**

- ▲ TEMPORARY TRAFFIC SIGNAL HEAD SPAN WIRE MOUNTED ORIGINAL LOCATION
- ⊠ EMERGENCY VEHICLE LIGHT DETECTOR
- ⊠ CONFIRMATION BEACON
- ⊠ TEMPORARY PEDESTRIAN SIGNAL HEAD, BRACKET MOUNTED
- ⊠ PEDESTRIAN PUSH BUTTON DETECTOR
- ⊠ TEMPORARY WOOD POLE (CLASS 5 OR BETTER) 45 FOOT MINIMUM
- ⊠ TEMPORARY CONTROLLER CABINET
- TEMPORARY SPAN WIRE, TETHER WIRE, AND CABLE
- ⊠ TEMPORARY SERVICE INSTALLATION
- ⊠ TEMPORARY LUMINAIRE AND MAST (MOUNTED ON WOOD POLE)
- ⊠ IMAGE SENSOR
- ⊠ DOME PAN/TILT/ZOOM (PTZ) CAMERA

**REMOVE EXISTING TRAFFIC SIGNAL EQUIPMENT EACH 1**

THE FOLLOWING EXISTING TRAFFIC SIGNAL EQUIPMENT SHALL BE REMOVED BY THE CONTRACTOR, SHALL REMAIN THE PROPERTY OF THE COUNTY AND SHALL BE DELIVERED BY THE CONTRACTOR TO THE COUNTY YARD AS PER THE TRAFFIC SIGNAL SPECIFICATIONS OR AS DIRECTED BY THE COUNTY TRAFFIC ENGINEER.

**LAKE COUNTY DIVISION OF TRANSPORTATION**

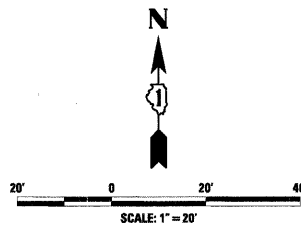
- 1 EACH CONTROLLER AND CABINET COMPLETE
- 1 EACH VIDEO VEHICLE DETECTION SYSTEM, COMPLETE
- 6 EACH 1-FACE 3-SECTION SIGNAL HEAD
- 4 EACH 1-FACE 4-SECTION SIGNAL HEAD
- 2 EACH 1-FACE 5-SECTION SIGNAL HEAD
- 1 EACH 1-FACE PEDESTRIAN SIGNAL HEAD

THE FOLLOWING ITEMS SHALL BE REMOVED BY THE CONTRACTOR AND SHALL BE DISPOSED OF BY THEM OUTSIDE THE RIGHT-OF-WAY AT THEIR EXPENSE. THE SALVAGE VALUE OF THE REMOVED EQUIPMENT SHALL BE REFLECTED IN THE CONTRACT BID PRICE.

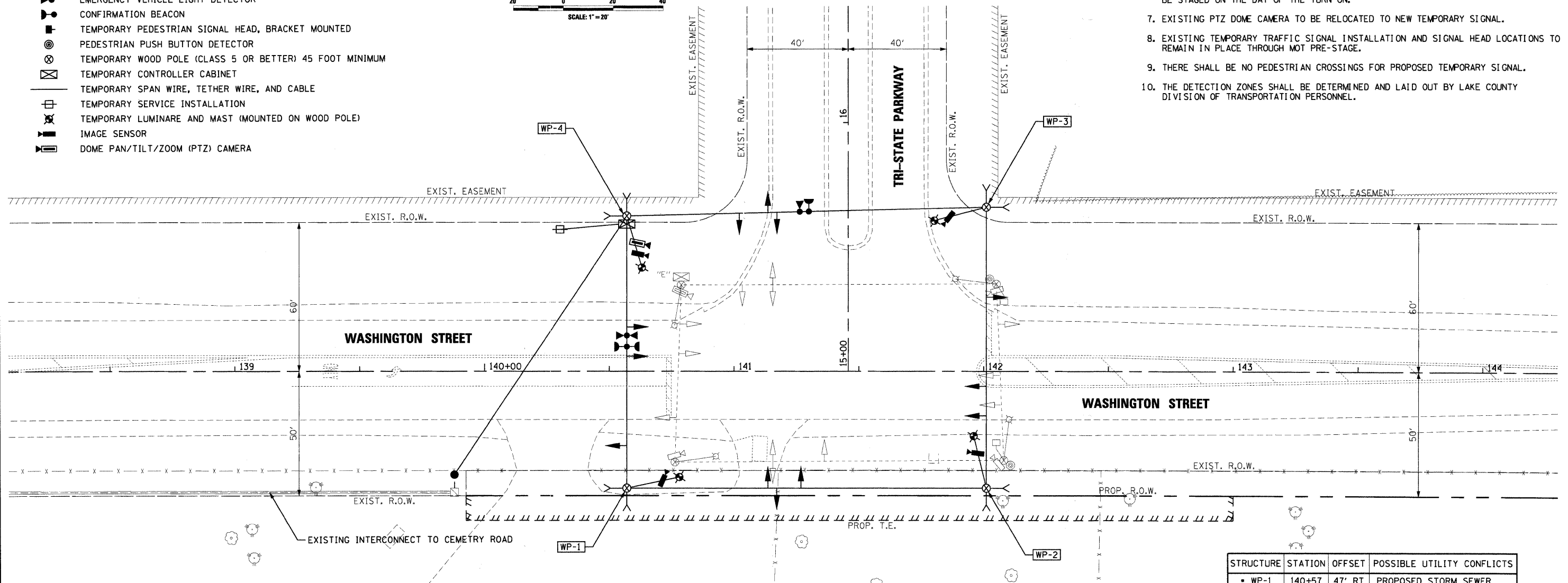
- 2 EACH PEDESTRIAN PUSH BUTTON
- 4 EACH TEMPORARY WOOD POLE WITH LUMINAIRE AND MAST
- 1 EACH SERVICE INSTALLATION

**NOTES FOR TEMPORARY TRAFFIC SIGNALS**

1. ALL CONTROL EQUIPMENT INCLUDING EMERGENCY PRE-EMPTION AND COMMUNICATION DEVICES FOR THE TEMPORARY TRAFFIC SIGNAL(S) SHALL BE FURNISHED BY THE CONTRACTOR.
2. ONLY ECONOLITE CONTROLLERS SUPPLIED BY ONE OF THE COUNTY APPROVED CLOSED LOOP EQUIPMENT MANUFACTURERS WILL BE APPROVED FOR USE AT TEMPORARY SIGNAL LOCATIONS. ALL CONTROLLERS USED FOR TEMPORARY TRAFFIC SIGNALS SHALL BE FULLY ACTUATED NEMA MICROPROCESSOR BASED WITH RS232 DATA ENTRY PORTS COMPATIBLE WITH EXISTING MONITORING SOFTWARE APPROVED BY THE COUNTY, INSTALLED IN A NEMA TS1 OR TS2 CABINET.
3. ALL TRAFFIC SIGNAL SECTIONS AND PEDESTRIAN SIGNAL SECTIONS SHALL BE 12". HEADS SHALL BE PLACED AS INDICATED ON THE TEMPORARY TRAFFIC SIGNAL PLAN OR AS DIRECTED BY THE ENGINEER. THE CONTRACTOR SHALL FURNISH ENOUGH CABLE SLACK TO RELOCATE HEADS TO ANY POSITION ON THE SPAN WIRE OR AT LOCATIONS ILLUSTRATED IN THE PLANS FOR CONSTRUCTION STAGING. THE TEMPORARY TRAFFIC SIGNAL SHALL REMAIN IN OPERATION DURING ALL SIGNAL HEAD RELOCATIONS. EACH TEMPORARY TRAFFIC SIGNAL HEAD SHALL HAVE ITS OWN CABLE FROM THE CONTROLLER CABINET TO THE SIGNAL HEAD.
4. ALL EXISTING STREET NAME AND INTERSECTION REGULATORY SIGNS SHALL BE REMOVED FROM EXISTING POLES, RELOCATED AND SECURELY FASTENED TO THE SIGNAL SPAN WIRE OR WOOD POLE AS DIRECTED BY THE ENGINEER.
5. ANY TEMPORARY SIGNAL WITHIN AN EXISTING CLOSED LOOP TRAFFIC SIGNAL SYSTEM SHALL BE INTERCONNECTED TO THAT SYSTEM USING SIMILAR BRAND/CONTROL EQUIPMENT.
6. THE TEMPORARY TRAFFIC SIGNAL SHALL HAVE THE SIGNAL HEAD DISPLAYS, SIGNAL HEAD PLACEMENTS AND CONTROLLER PHASING MATCH THE EXISTING TRAFFIC SIGNAL, AT THE TIME OF THE TURN ON, IF NO TRAFFIC STAGING IS IN PLACE OR WILL NOT BE STAGED ON THE DAY OF THE TURN ON.
7. EXISTING PTZ DOME CAMERA TO BE RELOCATED TO NEW TEMPORARY SIGNAL.
8. EXISTING TEMPORARY TRAFFIC SIGNAL INSTALLATION AND SIGNAL HEAD LOCATIONS TO REMAIN IN PLACE THROUGH MOT PRE-STAGE.
9. THERE SHALL BE NO PEDESTRIAN CROSSINGS FOR PROPOSED TEMPORARY SIGNAL.
10. THE DETECTION ZONES SHALL BE DETERMINED AND LAID OUT BY LAKE COUNTY DIVISION OF TRANSPORTATION PERSONNEL.



SIGNAL HEAD LOCATIONS FOR EACH CONSTRUCTION STAGE ARE SHOWN ON SHEET 94.



**SCOPE OF WORK**  
 TEMPORARY SIGNAL WITH TEMPORARY INTERCONNECT.  
 REMOVE EXISTING SIGNAL EQUIPMENT.  
 EXISTING PTZ DOME CAMERA TO BE RELOCATED TO NEW TEMPORARY SIGNAL.

• THE CONTRACTOR SHALL PROVIDE BRACING FOR THE TEMPORARY SIGNAL POLE DURING CONSTRUCTION OF PROPOSED DRAINAGE STRUCTURE NO. 13. THE COST ASSOCIATED WITH BRACING SHALL BE INCLUDED IN THE CONTRACT PRICE FOR "TEMPORARY TRAFFIC SIGNAL INSTALLATION".

STRUCTURE	STATION	OFFSET	POSSIBLE UTILITY CONFLICTS
WP-1	140+57	47' RT	PROPOSED STORM SEWER
WP-2	142+01	47' RT	NONE
WP-3	142+01	66' LT	NONE
WP-4	140+57	63' LT	COMED

FILE NAME: I:\Lakeco\0822-01\Draw\Sheets\T.S.-01.dgn