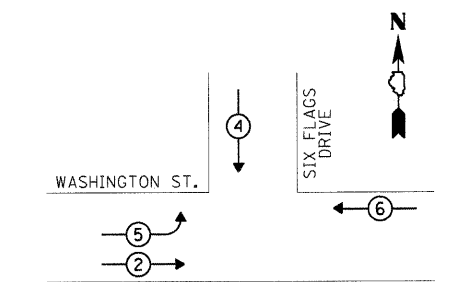


TEMPORARY CABLE PLAN LEGEND

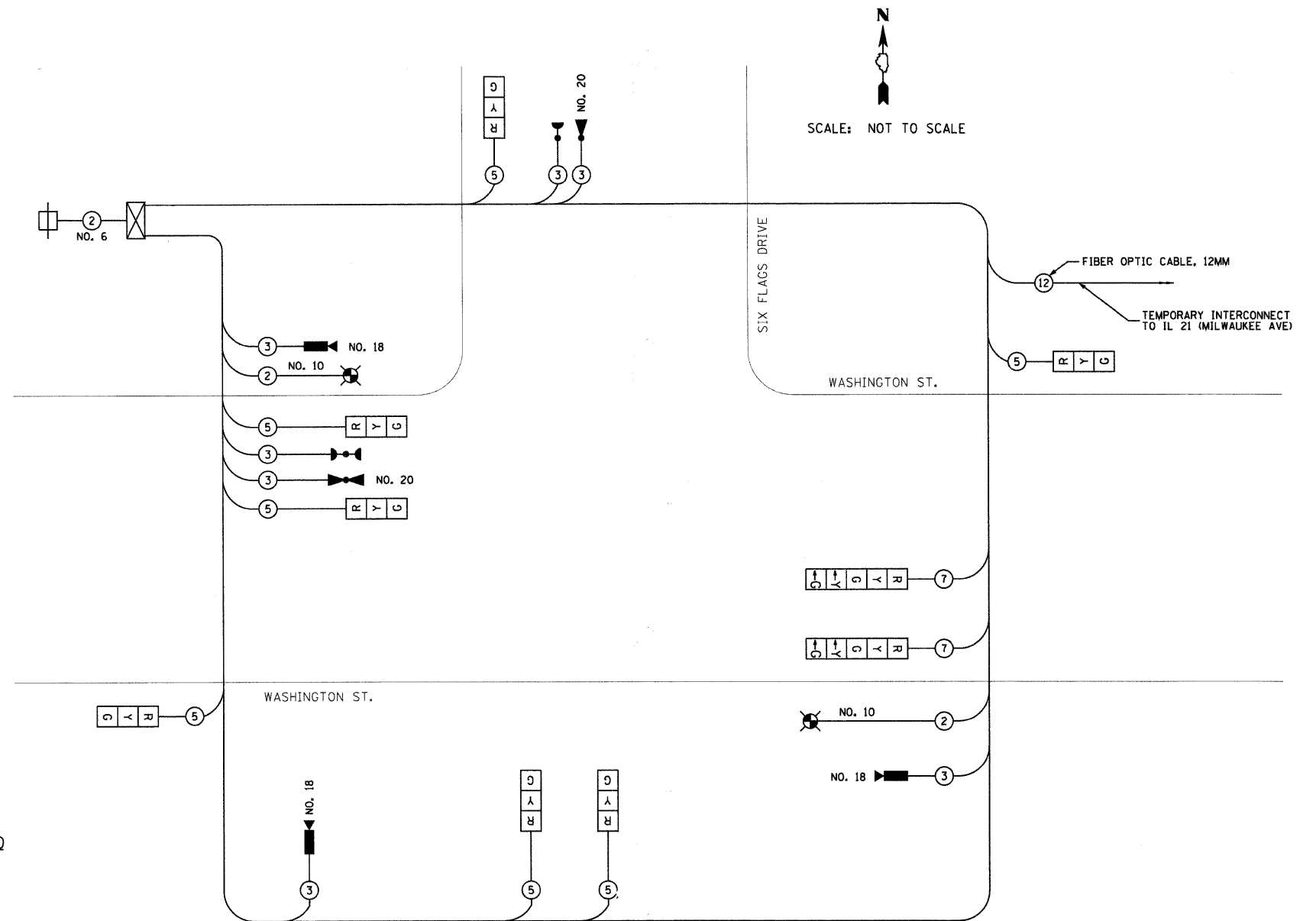
- 12" TEMPORARY TRAFFIC SIGNAL SECTION
- 12" PEDESTRIAN SIGNAL SECTION
- TEMPORARY CONTROLLER CABINET
- TEMPORARY SERVICE INSTALLATION
- TELEPHONE DROP
- VEHICLE DETECTOR, INDUCTION LOOP
- EMERGENCY VEHICLE LIGHT DETECTOR
- CONFIRMATION BEACON
- PEDESTRIAN PUSHBUTTON
- INDICATES NUMBER OF CONDUCTORS IN CABLE. ALL CONDUCTORS TO BE NO. 14 WIRE UNLESS OTHERWISE NOTED.
- LUMINAIRE
- DOME PAN/TILT/ZOOM (PTZ) CAMERA
- IMAGE SENSOR
- COAXIAL CABLE (BELDEN 8281) NO. 20

TEMPORARY PHASE DESIGNATION DIAGRAM LEGEND

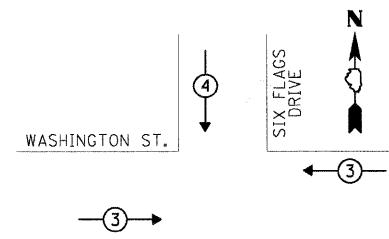
- VEHICULAR MOVEMENT - DUAL ENTRY PHASE
- VEHICULAR MOVEMENT - SINGLE ENTRY PHASE
- PEDESTRIAN MOVEMENT
- OVERLAP MOVEMENT
- * NUMBER REFERS TO ASSOCIATED PHASE



TEMPORARY PHASE DESIGNATION DIAGRAM



TEMPORARY CABLE PLAN
NOT TO SCALE



TEMPORARY EMERGENCY VEHICLE PREEMPTION SEQUENCE

TEMPORARY EMERGENCY VEHICLE PREEMPTORS		
EMERGENCY VEHICLE PREEMPTOR	3	4
MOVEMENT	← →	↓

L.C.D.O.T. TRAFFIC SIGNAL INSTALLATION ELECTRICAL SERVICE REQUIREMENTS					TOTAL WATTAGE
TYPE	NO. LAMPS	WATTAGE		% OPERATION	
SIGNAL (RED)	9	—	10	0.50	45
(YELLOW)	9	—	19	0.10	18
(GREEN)	9	—	11	0.40	40
ARROW	4	—	9	0.10	4
PED SIGNAL	—	—	9	1.00	—
CONTROLLER	1	—	100	1.00	100
VIDEO SYSTEM	1	—	150	1.00	150
LUMINAIRE	2	—	250	0.50	250
L.E.D. ST. SIGNS	—	—	64	0.50	—
BATTERY BACKUP	—	—	25	1.00	—
TOTAL =					607

ENERGY COSTS TO: LAKE COUNTY DIVISION OF TRANSPORTATION
600 WINCHESTER ROAD
LIBERTYVILLE, IL 60048

ENERGY SUPPLY: CONTACT: MS. TERRI BLECK
PHONE: (847) 816-5234
COMPANY: COMED

FOUNDATION (DEPTH)	FT.	CABLE SLACK	FT.	VERTICAL	FT.
TYPE A - POST	4	HANDHOLE	6.5	ALL FOUNDATIONS	3.5
D - CONTROLLER	4	DOUBLE HANDHOLE	13	MAST ARM (L) POLE	20+L-2=
E - MAST ARM POLE	15	SIGNAL POST	2		
		CONTROLLER CABINET	1	BRACKET MOUNTED	13
		FIBER OPTIC	13	PEDESTRIAN PUSHBUTTON	4
		ELECTRIC SERVICE	1	ELECTRIC SERVICE	13.5
		GROUND CABLE	1	SERVICE TO GROUND	13.5
				POST MOUNTED	

CMT CRAWFORD, MURPHY & TILLY, INC. CONSULTING ENGINEERS License No. 184-000613	USER NAME = Steve Prange DESIGNED - CMC DRAWN - CMC CHECKED - KDN DATE - 05/29/09	REVISIONS REVISIONS REVISIONS REVISIONS	Lake County Division of Transportation	WASHINGTON STREET - TEMPORARY CABLE PLAN WASHINGTON STREET AT SIX FLAGS DRIVE			F.A. RTE. 1016 SECTION 02-00110-12-WR COUNTY LAKE TOTAL SHEETS 206 SHEET NO. 100
	SCALE: SHEET NO. OF SHEETS STA. TO STA.			FED. ROAD DIST. NO. 1 ILLINOIS FED. AID PROJECT			