

F.A. RTE.	SECTION	COUNTY	TOTAL SHEETS	SHEET NO.
06-00054-00-BT		COOK	47	9

**LEGEND**

- G— EXISTING GAS LINE
- W— EXISTING WATER MAIN
- X - EXISTING FENCE
- X - PROPOSED FENCE
- EXISTING WATER VALVE
- ⊙ EXISTING MANHOLE
- ▭ PERIMETER EROSION BARRIER
- ⊗ TREE REMOVAL
- ▨ WETLAND IMPACT AREA

PROP. CURVE PCL4-3  
 PI STA. = 16+48.91  
 $\Delta = 32^\circ 26' 31''$  (RT)  
 $D = 57' 17' 45''$   
 $R = 100.00'$   
 $T = 29.09'$   
 $L = 56.62'$   
 $E = 4.15'$   
 S.E. RUN = -----  
 P.C. STA. = 16+19.81  
 P.T. STA. = 16+76.44

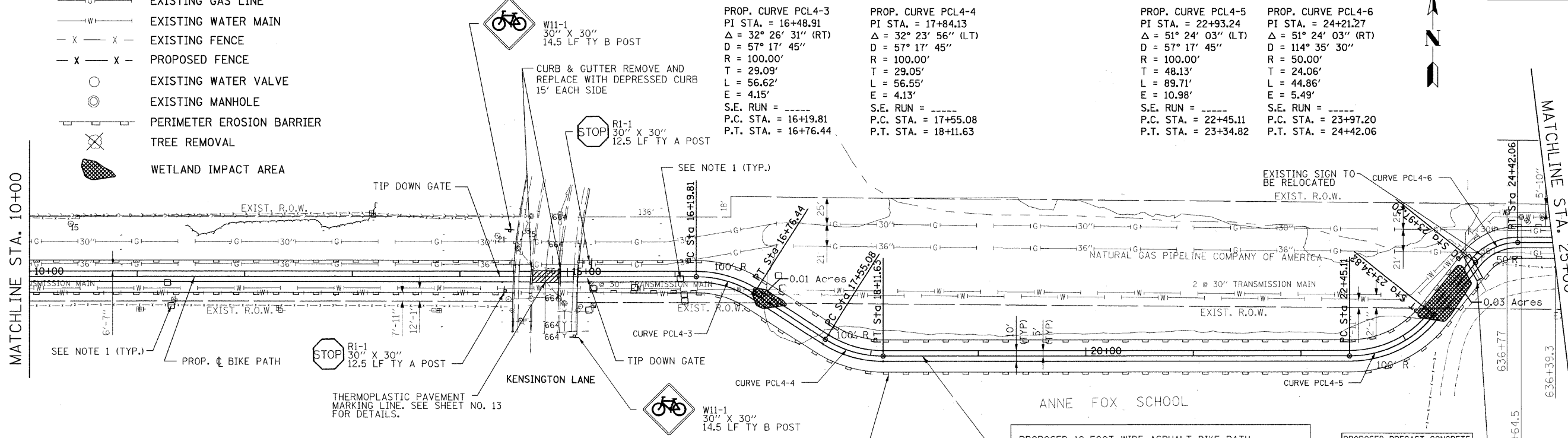
PROP. CURVE PCL4-4  
 PI STA. = 17+84.13  
 $\Delta = 32^\circ 23' 56''$  (LT)  
 $D = 57' 17' 45''$   
 $R = 100.00'$   
 $T = 29.05'$   
 $L = 56.55'$   
 $E = 4.13'$   
 S.E. RUN = -----  
 P.C. STA. = 17+55.08  
 P.T. STA. = 18+11.63

PROP. CURVE PCL4-5  
 PI STA. = 22+93.24  
 $\Delta = 51^\circ 24' 03''$  (LT)  
 $D = 57' 17' 45''$   
 $R = 100.00'$   
 $T = 48.13'$   
 $L = 89.71'$   
 $E = 10.98'$   
 S.E. RUN = -----  
 P.C. STA. = 22+45.11  
 P.T. STA. = 23+34.82

PROP. CURVE PCL4-6  
 PI STA. = 24+21.27  
 $\Delta = 51^\circ 24' 03''$  (RT)  
 $D = 114' 35' 30''$   
 $R = 50.00'$   
 $T = 24.06'$   
 $L = 44.86'$   
 $E = 5.49'$   
 S.E. RUN = -----  
 P.C. STA. = 23+97.20  
 P.T. STA. = 24+42.06

MATCHLINE STA. 10+00

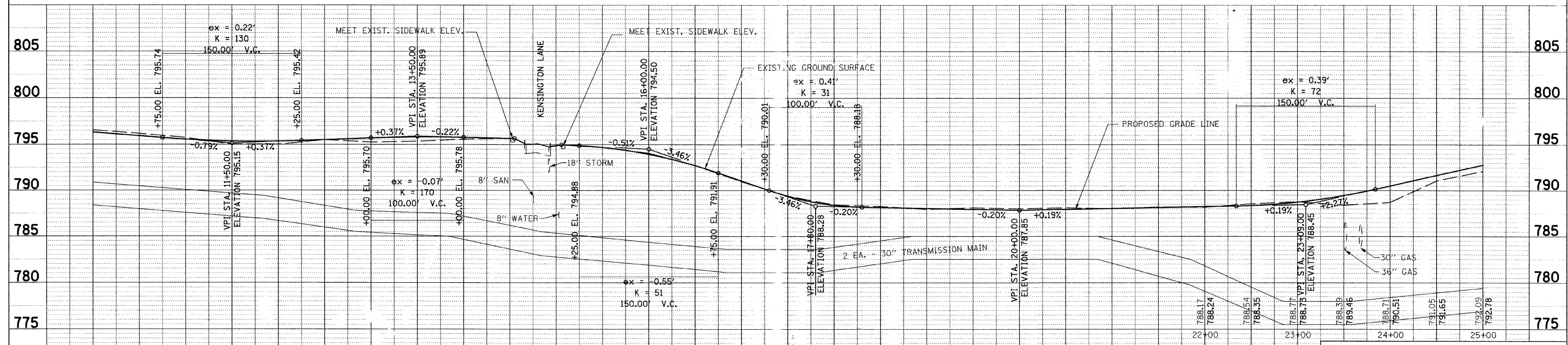
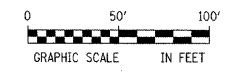
MATCHLINE STA. 25+00



**NOTE 1**  
 ALL ANODE BED LOCATIONS SHOWN ON PLANS ARE APPROXIMATE. CONTRACTOR SHALL FIELD VERIFY ACTUAL LOCATIONS. NO PAVING SHALL TAKE PLACE IN THE VICINITY OF THE ANODE BEDS UNTIL VERIFICATION THAT THE ELECTRICAL CONNECTION FROM THE ANODES TO THE WATER PIPELINES IS INTACT.

PROPOSED 10-FOOT WIDE ASPHALT BIKE PATH  
 AGGREGATE BASE COURSE, TYPE B 6"  
 HOT MIX ASPHALT SURFACE COURSE, MIX C, N50, 3"  
 PAINT PAVEMENT MARKING, 4" (SOLID YELLOW ALONG  $\phi$ )

PROPOSED PRECAST CONCRETE  
 BOX CULVERT 6'x3' (25 LF)  
 UPSTREAM EL. 786  
 DOWNSTREAM EL. 785.5



**URS** 100 S. WACKER DR., SUITE 500 TEL (312)-939-1000  
 CHICAGO, IL, 60606 FAX (312)-939-4198

REVISIONS	
NAME	DATE

VILLAGE OF HANOVER PARK  
 N.G.P.L. BIKE PATH  
 PLAN AND PROFILE  
 STA. 10+00 TO STA. 25+00

SCALE: VERT. 1"=5'  
 HORIZ. 1"=50'  
 DATE: \_\_\_\_\_ DRAWN BY: VAP  
 CHECKED BY: YOO