

F.A.U. RTE.	SECTION	COUNTY	TOTAL SHEETS	SHEET NO.
2690	09-00069-00-SP	COOK	28	1
		ILLINOIS	CONTRACT NO. 63222	

INDEX OF SHEETS

SHEET NO.	DESCRIPTION
1	TITLE SHEET
2	GENERAL NOTES AND IDOT STANDARDS
3	SUMMARY OF QUANTITIES
4	TYPICAL SECTIONS
5	ALIGNMENT, TIES AND BENCHMARKS
6	EXISTING CONDITIONS AND REMOVAL PLAN
7	PROPOSED ROADWAY PLAN AND PROFILE - WOLF ROAD
8	PROPOSED ROADWAY PLAN - WHITEHALL AVENUE
9	LIGHTING NOTES AND BILL OF MATERIALS
10	PROPOSED LIGHTING PLAN
11	PROPOSED LIGHTING DETAILS
12-13	RECORD DRAWINGS
14	TRAFFIC SIGNAL MODIFICATION PLAN
15	SCHEDULE OF QUANTITIES, CABLE PLAN PHASE DESIGNATION DIAGRAM, AND EMERGENCY PREEMPTION SEQUENCE
16-19	DISTRICT ONE TRAFFIC SIGNAL DESIGN DETAILS
20	CONSTRUCTION DETAILS
21	DISTRICT ONE TYPICAL PAVEMENT MARKINGS
22	TRAFFIC CONTROL AND PROTECTION FOR SIDE ROADS, INTERSECTIONS, AND DRIVEWAYS
23-25	CROSS SECTIONS - WOLF ROAD
26-28	CROSS SECTIONS - WHITEHALL AVENUE

**STATE OF ILLINOIS
DEPARTMENT OF TRANSPORTATION
DIVISION OF HIGHWAYS**

**PLANS FOR PROPOSED
FEDERAL AID HIGHWAY**

WOLF ROAD (COUNTRY CLUB DRIVE TO WHITEHALL AVENUE)

FAU ROUTE NO. 2690

Section No.: 09-00069-00-SP

TCM PROJECT

Project No.: M-9003 (291)

CITY OF NORTHLAKE

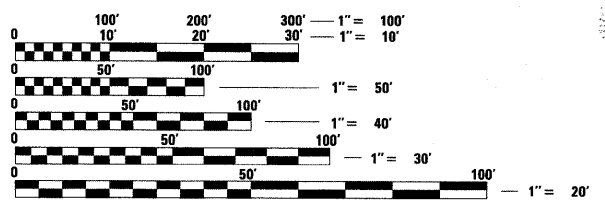
COOK COUNTY

JOB NO.: C-91-504-09



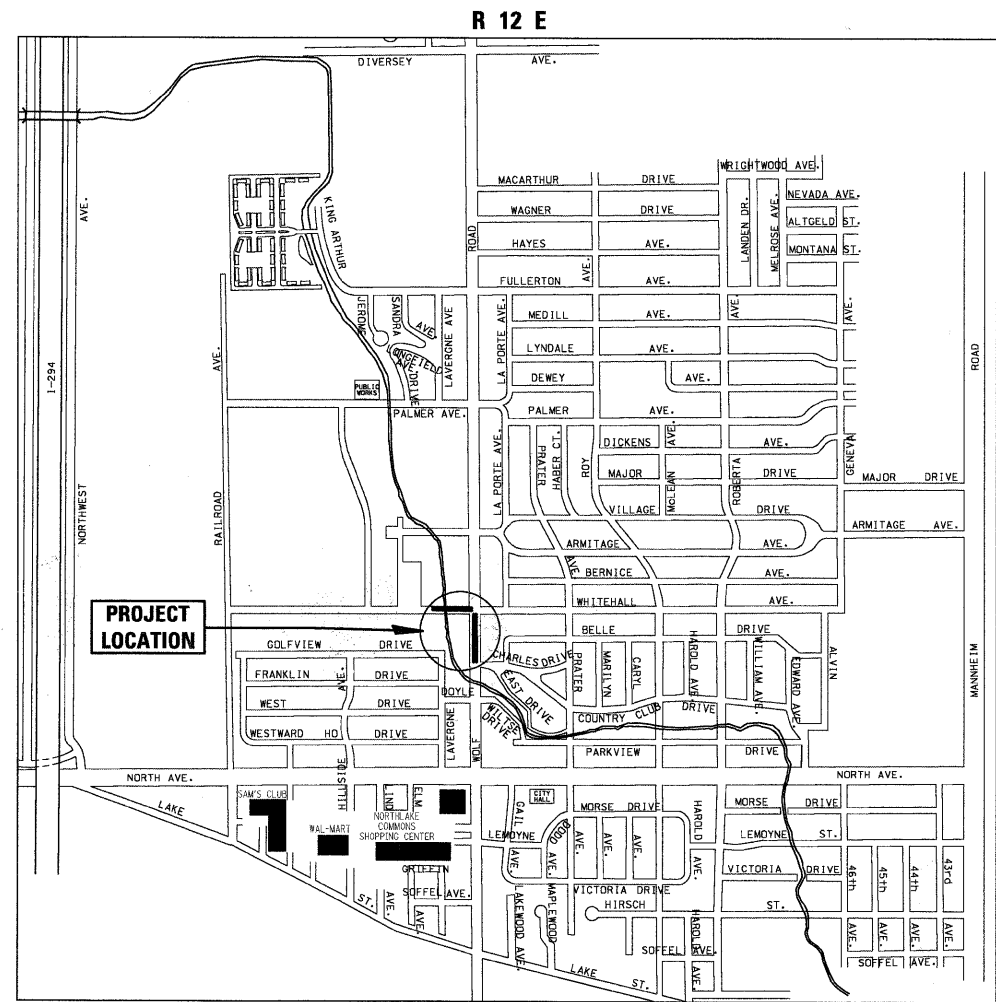
LOCATION OF SECTION INDICATED THIS: - [black rectangle] -

THE CONTRACTOR SHALL BE SOLELY RESPONSIBLE FOR JOB SITE SAFETY AS WELL AS SUPERVISION/DIRECTION AND MEANS/METHODS OF CONSTRUCTION.



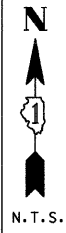
FULL SIZE PLANS HAVE BEEN PREPARED USING STANDARD ENGINEERING SCALES. REDUCED SIZED PLANS WILL NOT CONFORM TO STANDARD SCALES. IN MAKING MEASUREMENTS ON REDUCED PLANS, THE ABOVE SCALES MAY BE USED.

J.U.L.I.E.
JOINT UTILITY LOCATION INFORMATION FOR EXCAVATION
1-800-892-0123



LOCATION MAP - PROVISO TOWNSHIP

GROSS LENGTH OF PROJECT = 1000 LINEAL FEET 0.19 (MI.)
NET LENGTH OF PROJECT = 1000 LINEAL FEET 0.19 (MI.)



TRAFFIC DATA - WOLF ROAD
ADT (YEAR) = 12,600 (2006)
SPEED LIMIT = 30 MPH

TRAFFIC DATA - WHITEHALL AVENUE
ADT (YEAR) = 600 (2006)
SPEED LIMIT = 25 MPH

ELECTRICAL
July 6, 2009

Anthony J. Dericco
ANTHONY J. DERICCO
ILLINOIS REGISTRATION No. 062-057484 ENGINEER
EXPIRATION DATE: 11/30/09

TRAFFIC
7/6, 2009

George M. Ziegler
GEORGE M. ZIEGLER
ILLINOIS REGISTRATION No. 062-045853 ENGINEER
EXPIRATION DATE: 11/30/09

**STATE OF ILLINOIS
DEPARTMENT OF TRANSPORTATION
DIVISION OF HIGHWAYS**

APPROVED July 6, 2009
[Signature]
MAYOR
CITY OF NORTHLAKE

PASSED July 16, 2009
[Signature]
DISTRICT 1 ENGINEER OF LOCAL ROADS AND STREETS

RELEASING FOR BID BASED ON LIMITED REVIEW July 16, 2009

[Signature]
DEPUTY DIRECTOR OF HIGHWAYS
REGION ONE ENGINEER

CIVIL
7/6, 2009

[Signature]
JASON G. SOUDER
ILLINOIS REGISTRATION No. 062-050850 ENGINEER
EXPIRATION DATE: 11/30/09

FIELD ENGINEER: MARILIN SOLOMON TEL. 847-705-4407

CONTRACT NO. 63222