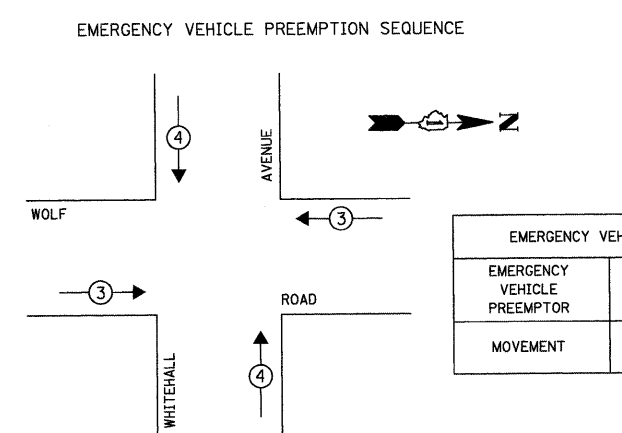
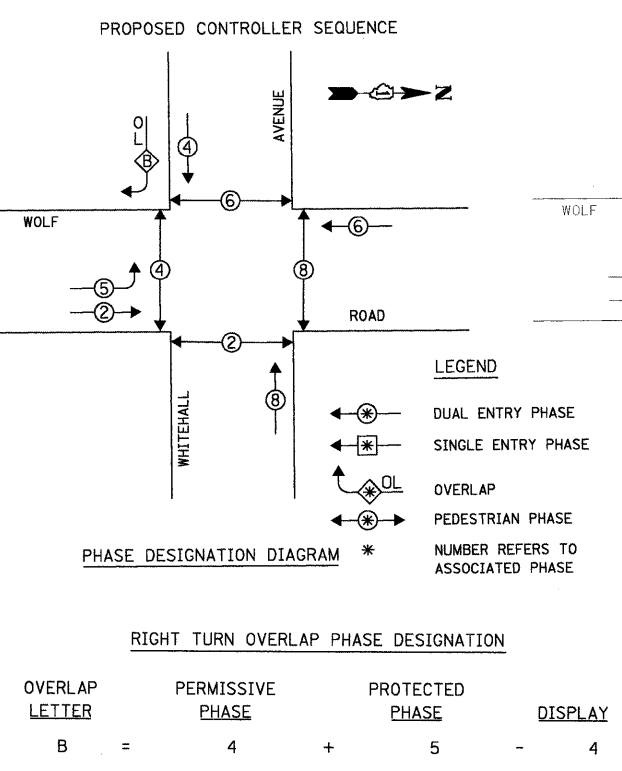


CABLE PLAN LEGEND

EXISTING	PROPOSED	DESCRIPTION
[Symbol]	[Symbol]	8" (200mm) TRAFFIC SIGNAL SECTION
[Symbol]	[Symbol]	12" (300mm) TRAFFIC SIGNAL SECTION
[Symbol]	[Symbol]	12" (300mm) PEDESTRIAN SIGNAL SECTION
[Symbol]	[Symbol]	16" x 18" PEDESTRIAN SIGNAL SECTION WITH COUNTDOWN TIMER
[Symbol]	[Symbol]	CONTROLLER CABINET
[Symbol]	[Symbol]	SERVICE INSTALLATION
[Symbol]	[Symbol]	TELEPHONE INSTALLATION
[Symbol]	[Symbol]	VEHICLE DETECTOR, INDUCTION LOOP
[Symbol]	[Symbol]	MAGNETIC DETECTOR
[Symbol]	[Symbol]	EMERGENCY VEHICLE LIGHT DETECTOR
[Symbol]	[Symbol]	CONFIRMATION BEACON
[Symbol]	[Symbol]	PUSHBUTTON DETECTOR
[Symbol]	[Symbol]	DENOTES NUMBER OF CONDUCTORS. ALL CABLE NO. 14 EXCEPT AS INDICATED. ALL LOOP DETECTOR CABLE TO BE SHIELDED.
[Symbol]	[Symbol]	GROUND CABLE IN CONDUIT NO. 6 SOLID COPPER (GREEN)
[Symbol]	[Symbol]	FIBER OPTIC CABLE IN CONDUIT NO. 62.5/125 2-MM12F SMI2F
[Symbol]	[Symbol]	SIGNAL FACE WITH BACKPLATE "P" INDICATES PROGRAMMED HEAD.
[Symbol]	[Symbol]	RAILROAD CONTROL CABINET
[Symbol]	[Symbol]	ILLUMINATED SIGN "NO LEFT TURN"
[Symbol]	[Symbol]	ILLUMINATED SIGN "NO RIGHT TURN"
[Symbol]	[Symbol]	GROUND ROD AT HANDHOLE (H), DOUBLE HANDHOLE (H), OR CONTROLLER (C)
[Symbol]	[Symbol]	GROUND ROD AT POST (P) OR MAST ARM POLE (MA)
[Symbol]	[Symbol]	GROUND ROD AT ELECTRIC SERVICE INSTALLATION
[Symbol]	[Symbol]	UNINTERRUPTIBLE POWER SUPPLY



I.D.O.T. TRAFFIC SIGNAL INSTALLATION ELECTRICAL SERVICE REQUIREMENTS

TYPE	NO. OF LAMPS	WATTAGE	INCAND.	LED	% OPERATION	TOTAL WATTAGE
SIGNAL (RED)	11	17		0.50		93.50
(YELLOW)	11	25		0.25		41.25
(GREEN)	11	15		0.25		33.75
ARROW	8	12		0.10		9.60
PED. SIGNAL	8	25		1.00		200.00
CONTROLLER	1	100		1.00		100.00
ILLUM. SIGN	-	25		0.05		-
FLASHER					0.50	
ENERGY COSTS TO:						TOTAL = 478.10

FOUNDATION (DEPTH)	FT.	(m)	CABLE SLACK	FT.	(m)	VERTICAL	FT.	(m)
TYPE A - POST	4	(1.2)	HANDHOLE	6.5	(2.0)	ALL FOUNDATIONS	3.5	(1.0)
D - CONTROLLER	4	(1.2)	DOUBLE HANDHOLE	13	(4.0)	MAST ARM (L) POLE	20'-H-2=	
E - M. ARM POLE	2	(1.0)	SIGNAL POST	2	(1.0)	(6m-H-0.6m)=		
24" (600mm)	10	(3.0)	CONTROLLER CAB.	1	(0.5)	BRACKET MOUNTED	13	(4.0)
30" (750mm)	15	(4.6)	FIBER OPTIC	13	(4.0)	PED. PUSHBUTTON	4	(1.2)
36" (900mm)	15	(4.6)	ELECTRIC SERVICE	1	(0.5)	ELECTRIC SERVICE	13.5	(4.1)
			GROUND CABLE	1	(0.5)	SERVICE TO GROUND	13.5	(4.1)
						POST MOUNTED	6	(1.8)

NOTE: PUSHBUTTON "A" SHALL PLACE A CALL IN PHASES 2 AND 4. PUSHBUTTON "C" SHALL PLACE A CALL IN PHASES 6 AND 8.

SCHEDULE OF QUANTITIES ITEM

ITEM	UNIT	TOTAL
DETECTABLE WARNINGS		
THERMOPLASTIC PAVEMENT MARKING - LINE 12"	SQ FT	91
THERMOPLASTIC PAVEMENT MARKING - LINE 24"	FOOT	436
CONDUIT PUSHED, 2 1/2" DIA., GALVANIZED STEEL	FOOT	125
MAINTENANCE OF EXISTING TRAFFIC SIGNAL INSTALLATION	FOOT	57
ELECTRIC CABLE IN CONDUIT, SIGNAL NO. 14 2C	EACH	1
ELECTRIC CABLE IN CONDUIT, SIGNAL NO. 14 3C	FOOT	692
TRAFFIC SIGNAL POST, GALVANIZED STEEL, 10 FT	FOOT	1282
CONCRETE FOUNDATION, TYPE A	EACH	1
DRILL EXISTING HANDHOLE	FOOT	4
PEDESTRIAN SIGNAL HEAD, LED, 1-FACE, BRACKET MOUNTED WITH COUNTDOWN TIMER	EACH	1
PEDESTRIAN SIGNAL HEAD, LED, 2-FACE, BRACKET MOUNTED WITH COUNTDOWN TIMER	EACH	4
DETECTOR LOOP - TYPE I	EACH	2
PEDESTRIAN PUSH-BUTTON	FOOT	83
MODIFY EXISTING CONTROLLER	EACH	6
	EACH	1