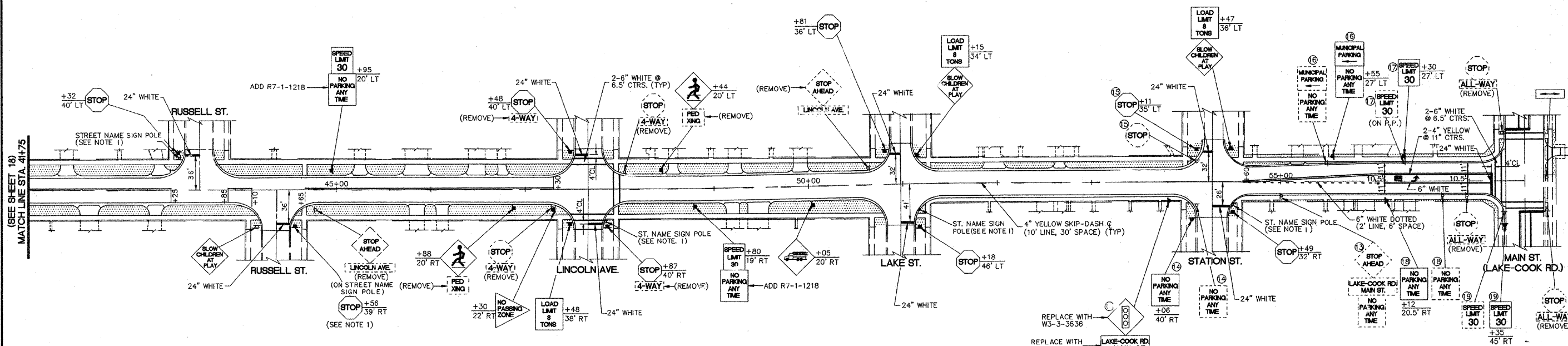
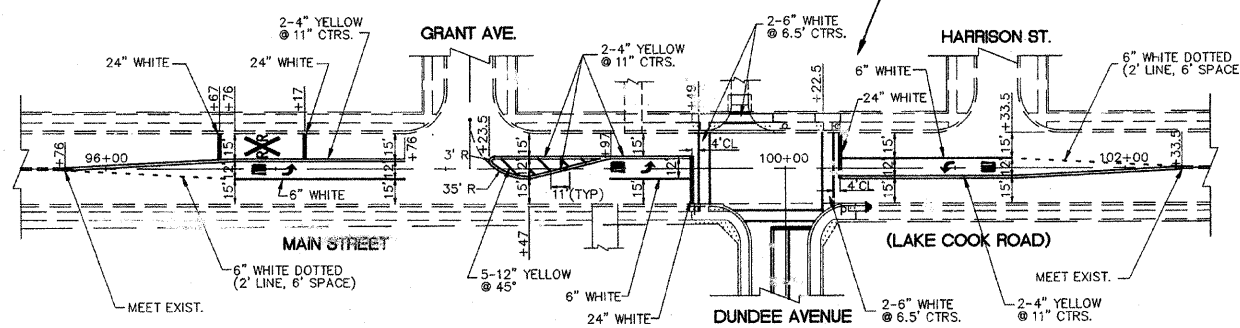


THIS SHEET INCLUDED FOR REFERENCE ONLY. PAVEMENT MARKINGS SHALL BE REPLACED WITHIN THE LIMITS OF CONSTRUCTION AND PAID FOR AT THE CONTRACT UNIT PRICES FOR PAVEMENT MARKINGS.

F.A.U. RTE.	SECTION	COUNTY	TOTAL SHEETS	SHEET NO.
2555	*	COOK & LAKE	41	19
FED. ROAD DIST. NO. 7 ILLINOIS FED. AID PROJECT - M-6003(883)				
BARRINGTON: 90-00059-00-WR STATE: 70-WRS-90				



NOTE: REMOVE ALL EXISTING THERMOPLASTIC PAVEMENT MARKING BETWEEN STA. 95+76 AND STA. 102+33.50



LEGEND (SHEETS 18 & 19)

- 4 EXISTING SIGN PANEL ASSEMBLY TO BE REMOVED, OR RELOCATED ON NEW TELESCOPING STEEL SIGN SUPPORT, UNLESS OTHERWISE NOTED.
- 4 NEW SIGN PANEL ASSEMBLY ON NEW TELESCOPING STEEL SIGN SUPPORT, OR RELOCATED SIGN PANEL ASSEMBLY
- 4 EXISTING SIGN PANEL ASSEMBLY TO REMAIN IN PLACE
- 4 EXISTING SIGN PANEL ASSEMBLY TO BE TEMPORARILY REMOVED AND RE-SET IN APPROXIMATELY THE SAME LOCATION ON NEW TELESCOPING STEEL SIGN SUPPORT
- 4" TOP SOIL AND SODDING

GENERAL NOTES (SHEETS 18 & 19)

1. STREET NAME SIGN POLES SHALL BE TEMPORARILY REMOVED AND RESET AT LOCATIONS AS DIRECTED BY THE ENGINEER, AND THE COST THEREOF SHALL BE CONSIDERED INCIDENTAL TO THE CONTRACT. STOP SIGNS MOUNTED ON STREET NAME SIGN POLES SHALL REMAIN SO MOUNTED, BUT THEY MUST BE VISIBLE AT ALL TIMES DURING CONSTRUCTION.
2. ALL NEW AND EXISTING SIGNS SHALL CONFORM TO THE "ILLINOIS MANUAL ON UNIFORM TRAFFIC CONTROL DEVICES FOR STREETS AND HIGHWAYS". THOSE EXISTING SIGNS THAT DO NOT CONFORM SHALL BE REPLACED AS DIRECTED BY THE ENGINEER, AND PAYMENT WILL BE FOR "SIGN PANEL - TYPE 1".
3. MOUNTING HEIGHT FOR SIGNS IS 7'.
4. ALL PERMANENT PAVEMENT MARKINGS ON DUNDEE AVENUE SHALL BE PERFORMED PLASTIC AS MANUFACTURED BY 3 M CO., OR APPROVED EQUAL, AND SHALL BE PLACED IN ACCORDANCE WITH ARTICLE T 503.02(c) OF THE "TRAFFIC SPECIFICATIONS". IN THE EVENT THE ROAD IS OPENED TO THRU TRAFFIC FOR THE WINTER BEFORE THE FINAL SURFACE COURSE CAN BE PLACED, IDENTICAL PAINTED MARKINGS SHALL BE IN PLACE ON THE BASE OR BINDER COURSE PRIOR TO OPENING, AND PAYMENT WILL BE FOR "PAINT PAVEMENT MARKING - LINE OR LETTERS AND SYMBOLS". IF THE PAINTED MARKINGS ARE NOT REQUIRED, THEY SHALL BE DEDUCTED FROM THE CONTRACT.
5. DIMENSIONS TO PAVEMENT MARKINGS ARE TO THE CENTER OF A SINGLE LINE OR THE CENTER OF GAP FOR A DOUBLE LINE, UNLESS OTHERWISE SPECIFIED.
6. TURN LANE MARKINGS (ARROW & "ONLY") SHALL BE LARGE SIZE.
7. ALL TELESCOPING STEEL SIGN SUPPORTS SHALL BE GROUND MOUNTED, AND SHALL BE EITHER THE "OWIK-PUNCH SYSTEM" AS MANUFACTURED BY ALLIED TUBE AND CONDUIT CO. OF HARVEY, ILLINOIS, OR AN APPROVED EQUAL.
8. ALL PERMANENT PAVEMENT MARKINGS ON MAIN STREET SHALL BE THERMOPLASTIC, PLACED IN ACCORDANCE WITH ARTICLE T 501.05 OF THE "TRAFFIC SPECIFICATIONS". IN THE EVENT THE ROAD IS READY FOR PERMANENT MARKINGS BETWEEN NOVEMBER 1 AND APRIL 25, IDENTICAL PAINTED MARKINGS SHALL BE INSTALLED, AND PAYMENT WILL BE FOR "PAINT PAVEMENT MARKING - LINE OR LETTERS AND SYMBOLS". IN THIS CASE THE REMOVAL OF THE PAINTED MARKINGS PRIOR TO THE INSTALLATION OF FINAL THERMOPLASTIC MARKINGS, IF NECESSARY, WILL BE CONSIDERED INCIDENTAL TO THE CONTRACT.

REVISIONS	
NAME	DATE

DEPARTMENT OF TRANSPORTATION
PAVEMENT MARKING, SIGNING AND LANDSCAPING
DUNDEE AVENUE
 STA. 4H75 TO STA. 57+57.80
MAIN STREET
 STA. 95+76 TO STA. 102+33.50
 DATE 3/10/92
 CHECKED BY RJK

FILE NAME = 4167-000_Dundee.dwg	USER NAME =	DESIGNED - LXM DRAWN - LXM CHECKED - DEM DATE - 5/26/09	REVISED - LXM 6/30/09 REVISED - REVISED - REVISED -	DUNDEE AVENUE RESURFACING PROGRAM	PAVEMENT MARKING	F.A.U. RTE. 2555 SECTION 09-00089-00-RS COUNTY COOK TOTAL SHEETS 13 SHEET NO. 7 CONTRACT NO. 63231	SCALE: NONE SHEET NO. 7 OF 12 SHEETS STA. 41+75 TO STA. 57+57.80	ILLINOIS FED. AID PROJECT
------------------------------------	-------------	--	--	--	-------------------------	---	--	---------------------------