

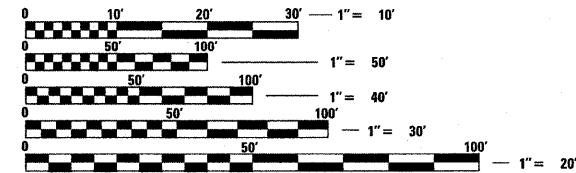
INDEX OF SHEETS

- 1 COVER SHEET
- 2-3 SUMMARY OF QUANTITIES
- 4-7 STANDARD TRAFFIC SIGNAL DESIGN STANDARDS
- 8-10 TRAFFIC SIGNAL MODIFICATION PLAN - EDGELAWN DRIVE
- 11 CABLE PLAN AND PHASE DESIGNATION DIAGRAM - EDGELAWN DRIVE
- 12-14 TRAFFIC SIGNAL MODIFICATION PLAN - RANDALL ROAD
- 15 CABLE PLAN AND PHASE DESIGNATION DIAGRAM - RANDALL ROAD
- 16-17 TRAFFIC SIGNAL MODIFICATION PLAN - ELMWOOD DRIVE
- 18 CABLE PLAN AND PHASE DESIGNATION DIAGRAM - ELMWOOD DRIVE
- 19-20 TRAFFIC SIGNAL MODIFICATION PLAN - NANTUCKET ROAD
- 21 CABLE PLAN AND PHASE DESIGNATION DIAGRAM - NANTUCKET ROAD
- 22-23 TRAFFIC SIGNAL MODIFICATION PLAN - HIGHLAND AVENUE
- 24 CABLE PLAN - HIGHLAND AVENUE
- 25 CONTROLLER, RAILROAD PREEMPTION, AND EMERGENCY VEHICLE PREEMPTION SEQUENCES OF OPERATION
- 26-29 INTERCONNECT PLAN
- 30 INTERCONNECT SCHEMATIC

HIGHWAY STANDARDS

- 424001-05 CURB RAMPS FOR SIDEWALKS
- 701501-05 URBAN LANE CLOSURE, 2L, 2W, UNDIVIDED
- 701502-03 URBAN LANE CLOSURE, 2L, 2W, WITH BIDIRECTIONAL LEFT TURN LANE
- 701606-06 URBAN LANE CLOSURE, MULTILANE, 2W WITH MOUNTABLE MEDIAN
- 701701-06 URBAN LANE CLOSURE, MULTILANE INTERSECTION
- 701801-04 LANE CLOSURE, MULTILANE 1W OR 2W CROSSWALK OR SIDEWALK CLOSURE
- 701901-01 TRAFFIC CONTROL DEVICES
- 814001-02 HANDHOLES
- 857001-01 STANDARD PHASE DESIGNATION DIAGRAMS AND PHASE SEQUENCES
- 862001-01 UNINTERRUPTABLE POWER SUPPLY (UPS)
- 873001-02 TRAFFIC SIGNAL GROUNDING & BONDING
- 878001-07 CONCRETE FOUNDATION DETAILS
- 880006-01 TRAFFIC SIGNAL MOUNTING DETAILS
- 886001-01 DETECTOR LOOP INSTALLATIONS
- 000001-05 STANDARD SYMBOLS, ABBREVIATIONS AND PATTERNS

J.U.L.I.E.
JOINT UTILITY LOCATING INFORMATION FOR EXCAVATION
1-800-892-0123 (CALL 48 HOURS IN ADVANCE)



FULL SIZE PLANS HAVE BEEN PREPARED USING STANDARD ENGINEERING SCALES. REDUCED SIZED PLANS WILL NOT CONFORM TO STANDARD SCALES. IN MAKING MEASUREMENTS ON REDUCED PLANS, THE ABOVE SCALES MAY BE USED.

CONTRACT NO: 63246

**STATE OF ILLINOIS
DEPARTMENT OF TRANSPORTATION
DIVISION OF HIGHWAYS**

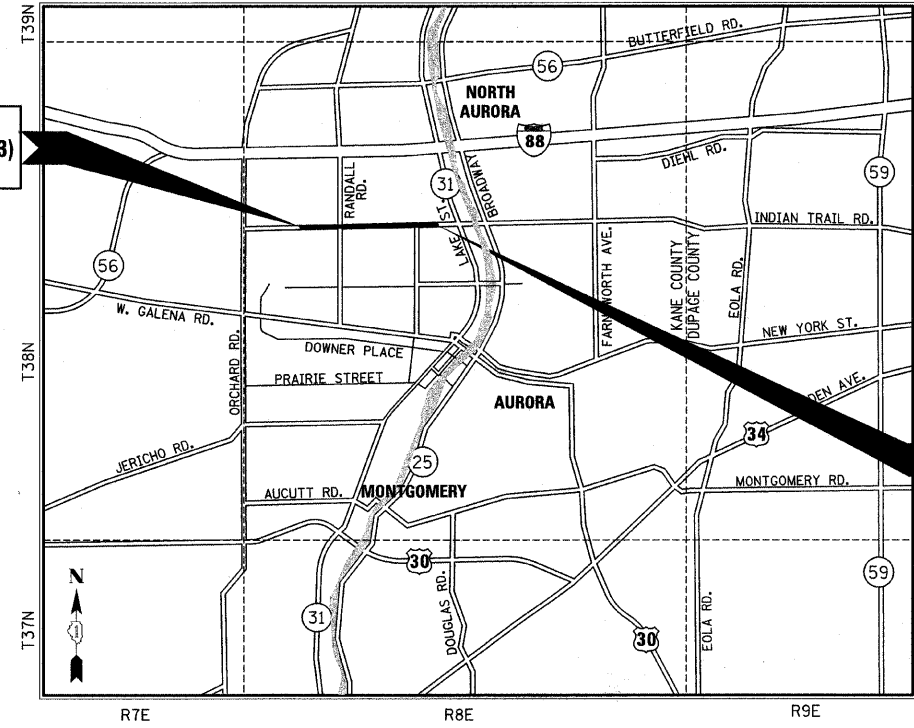
**PROPOSED
PLANS FOR
TRAFFIC SIGNAL INTERCONNECT**

**CONGESTION MITIGATION AIR QUALITY
FAU ROUTE 1503: INDIAN TRAIL
FROM EDGELAWN DRIVE TO LAKE STREET
SECTION 08-00271-00-TL
PROJECT NO. CMM-9003 (044)
KANE COUNTY
JOB NO.: C-91-438-08**

THIS IMPROVEMENT IS LOCATED
IN THE CITY OF AURORA

BEGIN PROJECT
INDIAN TRAIL (FAU 1503)
STA. 6000 + 00

END PROJECT
INDIAN TRAIL (FAU 1503)
STA. 6088 + 00



**LOCATION MAP
SCALE : N.T.S**

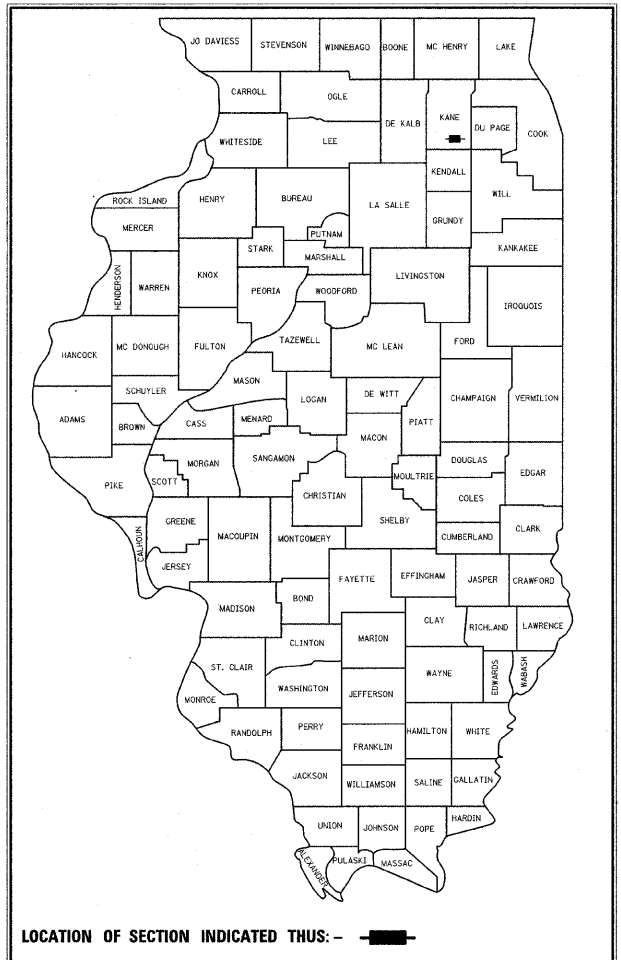
EXISTING ADT (2006) = 12,300.
POSTED SPEED = 35 M.P.H.
PROJECT GROSS LENGTH = 8,800.00 FEET = 1.67 MILES
PROJECT NET LENGTH = 8,800.00 FEET = 1.67 MILES



Anthony P. Simmons 7/20/2009
ANTHONY P. SIMMONS, P.E.
NO. 002-058414
EXPIRES: 11/30/09
SMITH ENGINEERING CONSULTANTS, INC.

F.A.U. RTE.	SECTION	COUNTY	TOTAL SHEETS	SHEET NO.
1503	08-00271-00-TL	KANE	30	1

CONTRACT NO. 63246



AGENCY RESPONSIBLE FOR LETTING	
APPROVED	July 20 2009 <i>Eric J. Diller</i> CITY OF AURORA, CITY TRAFFIC ENGINEER
PASSED	July 22, 2009 20 <i>Cheryl A. Helt</i> DISTRICT 1 ENGINEER OF LOCAL ROADS & STREETS
RELEASING FOR BID BASED ON LIMITED REVIEW	July 22 2009 <i>Diane M. O'Keefe</i> DEPUTY DIRECTOR OF HIGHWAYS, REGION 1 ENGINEER

Illinois Professional Design Firm # 184-000108

SEC Group, Inc.
Engineering
Surveying
Planning
Landscape Architecture

McHenry • Yorkville • New Lenox • Chicago
www.secgroupinc.com

DISTRICT 1 - LOCAL ROADS ENGINEER: MARILYN D. SOLOMON (847) 705-4407