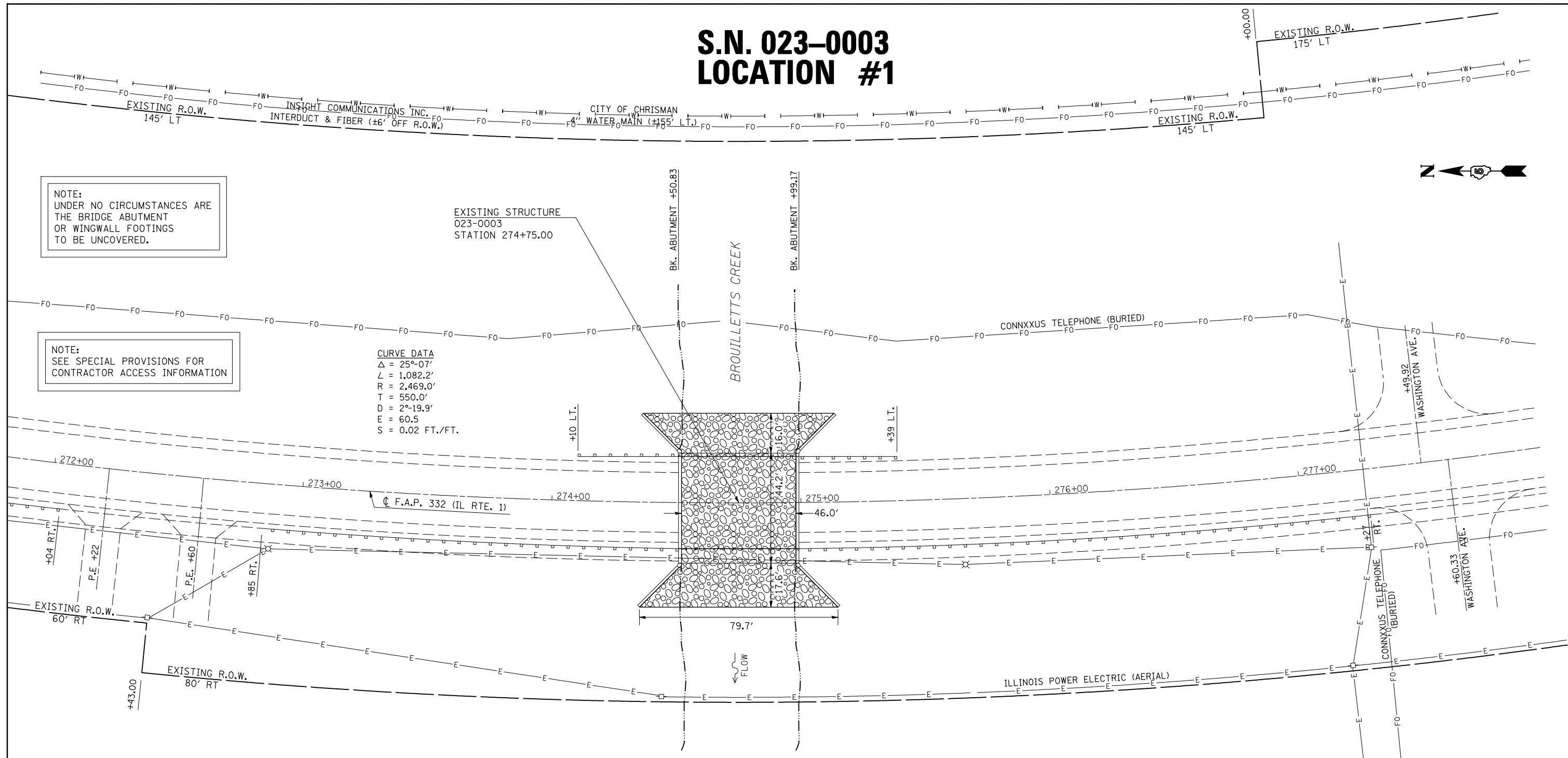


S.N. 023-0003 LOCATION #1



NOTE:
UNDER NO CIRCUMSTANCES ARE
THE BRIDGE ABUTMENT
OR WINGWALL FOOTINGS
TO BE UNCOVERED.


NOTE:
SEE SPECIAL PROVISIONS FOR
CONTRACTOR ACCESS INFORMATION

CURVE DATA
 $\Delta = 25^{\circ}07'$
 $L = 1,082.2'$
 $R = 2,469.0'$
 $T = 550.0'$
 $D = 2^{\circ}19.9'$
 $E = 60.5$
 $S = 0.02 \text{ FT./FT.}$

SCOUR REPAIR SCHEDULE

LOCATION	FILTER FABRIC AREA (SY)	REPAIR AREA (SY)	TYPE OF REPAIR	RIPRAP THICKNESS (IN)	BEDDING THICKNESS (IN)	RIPRAP ESTIMATED (TONS)	BEDDING ESTIMATED (TONS)
MAIN CHANNEL	475.0	475.0	A4	18.0	6.0	400.0	150.0

LEGEND

 STONE RIPRAP,
CLASS A4, 18"
(WITH 6" BEDDING
STONE AND FILTER
FABRIC)

* D5 SCOUR MITIGATION 2009-2
 ** EDGAR & VERMILION

FILE NAME = c:\pwwork\p\WID01\S15SGM1\d0124620\d570713-plan.dgn	USER NAME = s15sgm	DESIGNED - BJH	REVISED -
		DRAWN - GMS	REVISED -
	PLOT SCALE = 40.0000' / IN.	CHECKED -	REVISED -
	PLOT DATE = 6/26/2009	DATE -	REVISED -

STATE OF ILLINOIS
DEPARTMENT OF TRANSPORTATION

PLAN SHEET S.N. 023-0003			
SCALE:	SHEET NO.	OF SHEETS	STA. TO STA.

F.A. RTE.	SECTION	COUNTY	TOTAL SHEETS	SHEET NO.
VAR.	*	**	18	6
CONTRACT NO. 70713				
ILLINOIS FED. AID PROJECT				