

F.A.I. RTE.	SECTION	COUNTY	TOTAL SHEETS	SHEET NO.
55	D6	MACOUPIN	8	1

D6 INTERMITTENT RS 2010

D-96-119-10

STATE OF ILLINOIS

DEPARTMENT OF TRANSPORTATION

DIVISION OF HIGHWAYS

PLANS FOR PROPOSED CONTRACT MAINTENANCE

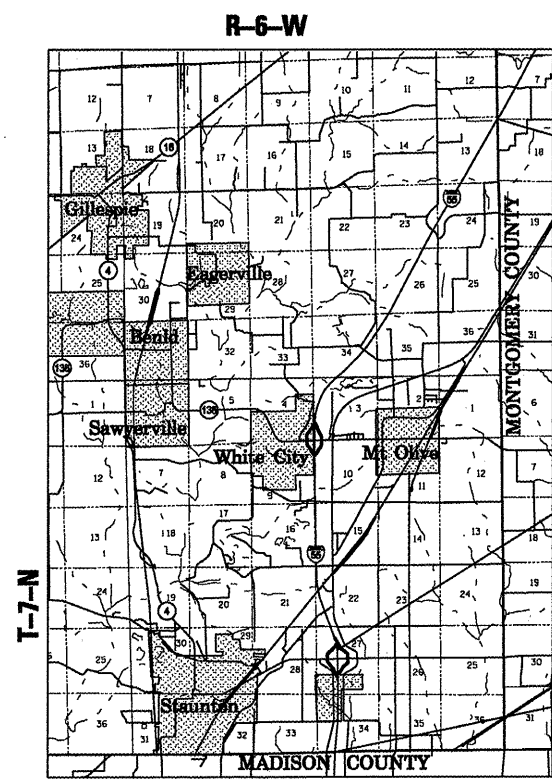
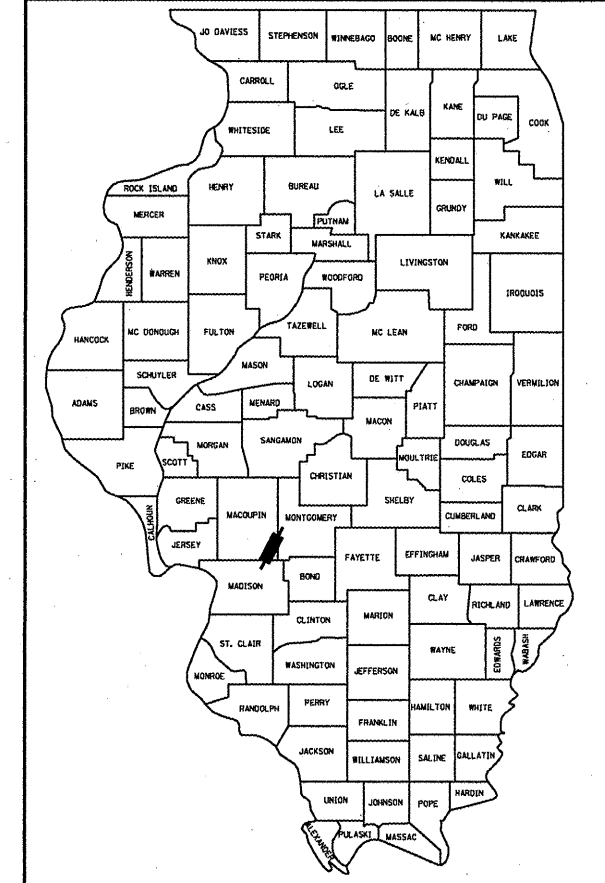
FAI ROUTE 55 SECTION D6 INTERMITTENT RS 2010 MACOUPIN COUNTY C-96-119-10

INDEX OF SHEETS

- 1 COVER SHEET
- 2 GENERAL NOTES
- 3 SUMMARY OF QUANTITIES
- 4 TYPICAL SECTIONS
- 5 SCHEDULES OF QUANTITIES
- 6-7 PLAN SHEETS
- 8 BUTT JOINT DETAIL

HIGHWAY STANDARDS

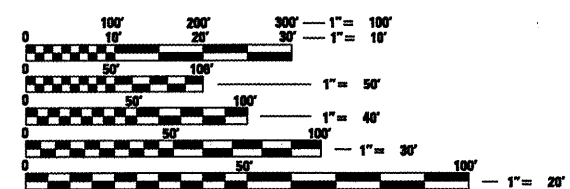
- 000001-05
- 701101-02
- 701400-03
- 701401-05
- 701411-05
- 701426-03
- 701901-01
- 780001-02
- 781001-03



PROJECT BEGINS STA 300+00.00

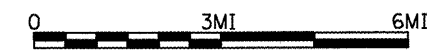
STATION EQUATION STA 809+87.27 BK= STA 161+08.45 AH

PROJECT ENDS STA 245+50.00



FULL SIZE PLANS HAVE BEEN PREPARED USING STANDARD ENGINEERING SCALES. REDUCED SIZED PLANS WILL NOT CONFORM TO STANDARD SCALES. IN MAKING MEASUREMENTS ON REDUCED PLANS, THE ABOVE SCALES MAY BE USED.

J.U.L.I.E. JOINT UTILITY LOCATION INFORMATION FOR EXCAVATION 1-800-892-0123



GROSS LENGTH OF PROJECT: 59,428.82 FEET = 11.26 MILES NET LENGTH OF PROJECT: 4,000.00 FEET = 0.76 MILES

ADT: 25,900

STATE OF ILLINOIS  
DEPARTMENT OF TRANSPORTATION  
DIVISION OF HIGHWAYS

SUBMITTED July 28 2009  
Page 2 of 8  
DEPUTY DIRECTOR OF HIGHWAYS, REGION ENGINEER

August 14 2009  
Charles G. Dugan  
ENGINEER OF DESIGN AND ENVIRONMENT

August 14 2009  
Christine M. Reed  
DIRECTOR OF HIGHWAYS, CHIEF ENGINEER

PRINTED BY THE AUTHORITY OF THE STATE OF ILLINOIS

PROJECT ENGINEER: SAL MADONIA (217) 782-4761 SQUAD LEADER: JEFF MYERS (217) 524-7940

CONTRACT NO. 72D15

F.A.I. RTE.	SECTION	COUNTY	TOTAL SHEETS	SHEET NO.
55	*	MACOUPIN	8	2
STA.		TO STA.		
FED. ROAD DIST. NO.		ILLINOIS	FED. AID PROJECT	

\* D6 INTERMITTENT RS 2010

GENERAL NOTES

1. THE CONTRACTOR SHALL BE RESPONSIBLE FOR PROTECTING UTILITY PROPERTY FROM CONSTRUCTION OPERATIONS AS OUTLINED IN ARTICLE 107.31 OF THE STANDARD SPECIFICATIONS. THE JULIE NUMBER IS 800-892-0123. A MINIMUM OF FORTY-EIGHT HOURS ADVANCE NOTICE IS REQUIRED. ANY DAMAGE TO THE UNDERGROUND FACILITIES, CAUSED BY THE CONTRACTOR SHALL BE REPAIRED TO THE SATISFACTION OF THE DEPARTMENT AT THE CONTRACTOR'S EXPENSE, INCLUDING TEMPORARY REPAIRS WHICH MAY BE REQUIRED TO KEEP THE FACILITY OPERATIONAL WHILE MATERIAL IS BEING OBTAINED TO MAKE PERMANENT REPAIRS.
2. THE LOCATIONS OF THOSE BURIED AND ABOVEGROUND UTILITIES SHOWN ARE APPROXIMATE, ARE SHOWN FOR CONTRACTOR INFORMATIONAL USE ONLY, AND ARE NOT TO BE REFERENCED FOR CONSTRUCTIONS PURPOSES. THE IMPLIED PRESENCE OR ABSENCE OF UTILITIES IS NOT TO BE CONSTRUED BY THE OWNER, ENGINEER, CONTRACTOR, OR SUBCONTRACTORS TO BE AN ACCURATE AND COMPLETE REPRESENTATION OF UTILITIES THAT MAY OR MAY NOT EXIST ON THE CONSTRUCTION SITE. BURIED AND ABOVEGROUND UTILITY LOCATION, IDENTIFICATION, AND MARKING ARE THE SOLE RESPONSIBILITY OF THE CONTRACTOR. REROUTING, DISCONNECTION, PROTECTION, ETC. OF ANY UTILITIES MUST BE COORDINATED BETWEEN THE CONTRACTOR, UTILITY COMPANY, AND OWNER. SITE SAFETY, INCLUDING THE AVOIDANCE OF HAZARDS ASSOCIATED WITH BURIED AND ABOVEGROUND UTILITIES, REMAINS THE SOLE RESPONSIBILITY OF THE CONTRACTOR.
3. THE THICKNESS OF HOT-MIX ASPHALT SHOWN ON THE PLANS IS THE NOMINAL THICKNESS. DEVIATIONS FROM THE NOMINAL THICKNESS WILL BE PERMITTED WHEN SUCH DEVIATIONS OCCUR DUE TO IRREGULARITIES IN THE EXISTING SURFACE OR BASE ON WHICH THE BITUMINOUS MIXTURE IS PLACED.
4. WHERE SECTION OR SUBSECTION MONUMENTS ARE ENCOUNTERED, THE ENGINEER SHALL BE NOTIFIED BEFORE SUCH MONUMENTS ARE REMOVED. THE CONTRACTOR SHALL PROTECT AND CAREFULLY PRESERVE ALL MONUMENTS UNTIL AN AUTHORIZED SURVEYOR OR AGENT HAS WITNESSED OR OTHERWISE REFERENCED THEIR LOCATION. THE CONTRACTOR SHALL BE RESPONSIBLE FOR HAVING AN AUTHORIZED SURVEYOR RE-ESTABLISH ANY SECTION OR SUBSECTION MONUMENTS DESTROYED BY HIS OPERATIONS.
5. THE FOLLOWING RATES OF APPLICATION HAVE BEEN USED IN CALCULATING PLAN QUANTITIES:  

BITUMINOUS MATERIAL (PRIME COAT)	0.00038	TON/SQ YD
HOT-MIX ASPHALT BINDER, SURFACE CSE	112	LBS/SQ YD/IN
6. ANY REFERENCE TO A STANDARD IN THESE PLANS SHALL BE INTERPRETED TO MEAN THE EDITION AS INDICATED BY THE SUBNUMBER LISTED ON THE INDEX OF SHEETS OR THE COPY OF THE STANDARD INCLUDED IN THESE PLANS.
7. UNLESS NOTED OTHERWISE, STATIONS AND OFFSETS REFER TO CENTERLINE OF PROJECT.
8. IN ADDITION TO FIELD SURVEYS AND AERIAL SURVEYS, PLAN DIMENSIONS AND DETAILS RELATIVE TO THE EXISTING FACILITIES HAVE BEEN TAKEN FROM EXISTING PLANS AND ARE SUBJECT TO CONSTRUCTION VARIATIONS. IT SHALL BE THE CONTRACTOR'S RESPONSIBILITY TO VERIFY SUCH DIMENSIONS AND DETAILS IN THE FIELD. SUCH VARIATIONS SHALL NOT BE A CAUSE FOR ADDITIONAL COMPENSATION DUE TO A CHANGE IN THE SCOPE OF THE WORK. HOWEVER, THE CONTRACTOR WILL BE PAID FOR THE QUANTITY ACTUALLY FURNISHED AT THE UNIT PRICE BID FOR THE WORK.

MIXTURE REQUIREMENTS

MIXTURE NUMBER:		
LOCATION	I-55	I-55
MIXTURE USE (S):	HMA LEVELING BINDER	HMA SURFACE
AC/PG:	SBS PG 70-22	SBS PG 76-22
DESIGN AIR VOIDS:	4.0% @ N DESIGN = 105	4.0% @ N DESIGN = 105
MIXTURE COMPOSITION (GRADATION MIXTURE)	IL 9.5 OR 12.5	IL 9.5 OR 12.5
FRICTION AGGREGATE	N/A	MIX "E"

DISTRICT SIX	
EXAMINED	July 21 20 09
<i>Sam J. Hoare</i>	
OPERATIONS ENGINEER	
EXAMINED	July 23 20 09
<i>Sam J. Hoare</i>	
PROGRAM IMPLEMENTATION ENGINEER	
EXAMINED	July 27 20 09
<i>ARM-D</i>	
PROGRAM DEVELOPMENT ENGINEER	

COMMITMENTS

NONE

REVISIONS	
NAME	DATE

ILLINOIS DEPARTMENT OF TRANSPORTATION  
**GENERAL NOTES**  
 FAI 55  
 SECTION D6 INTERMITTENT RS 2010  
 MACOUPIN COUNTY  
 SCALE: NOT DRAWN TO SCALE  
 DATE \_\_\_\_\_ DRAWN BY \_\_\_\_\_  
 CHECKED BY \_\_\_\_\_

CONTRACT 72D15

ILLINOIS DEPARTMENT OF TRANSPORTATION  
SUMMARY OF QUANTITIES

F.A.I. RTE.	SECTION	COUNTY	TOTAL SHEETS	SHEET NO.
55	*	MACOUPIN	8	3
STA.		TO STA.		
FED. ROAD DIST. NO.		ILLINOIS FED. AID PROJECT		

\* D6 INTERMITTENT RS 2010

LOCATION OF WORK				100% STATE
SUMMARY OF QUANTITIES				HMA ROADWAY 1-55 RESURFACING
CODE NO.	ITEM	UNIT	TOTAL QUANTITY	CONSTRUCTION TYPE CODE 1000-2A
40600200	BITUMINOUS MATERIALS (PRIME COAT)	TON	2	2
40600895	CONSTRUCTING TEST STRIP	EACH	2	2
40600855	POLYMERIZED LEVELING BINDER (MACHINE METHOD), N105	TON	523	523
40603575	POLYMERIZED HOT-MIX ASPHALT SURFACE COURSE, MIX "E", N105	TON	448	448
44000162	HOT-MIX ASPHALT SURFACE REMOVAL, 3 1/4"	SQ YD	5,333	5,333
44200577	CLASS A PATCHES, TYPE II, 12 INCH	SQ YD	60	60
44213000	PATCHING REINFORCEMENT	SQ YD	60	60
44213200	SAW CUTS	FOOT	400	400
67100100	MOBILIZATION	L SUM	1	1
70100420	TRAFFIC CONTROL AND PROTECTION, STANDARD 701411	EACH	2	2
70100800	TRAFFIC CONTROL AND PROTECTION, STANDARD 701401	L SUM	1	1
70106800	CHANGEABLE MESSAGE SIGN	CAL MO	2	2
70300100	SHORT-TERM PAVEMENT MARKING	FOOT	560	560
70301000	WORK ZONE PAVEMENT MARKING REMOVAL	SQ FT	187	187
* 78100100	RAISED REFLECTIVE PAVEMENT MARKER	EACH	51	51
78300200	RAISED REFLECTIVE PAVEMENT MARKER REMOVAL	EACH	51	51
* X7800620	URETHANE PAVEMENT MARKING - LINE 5"	FOOT	5,010	5,010

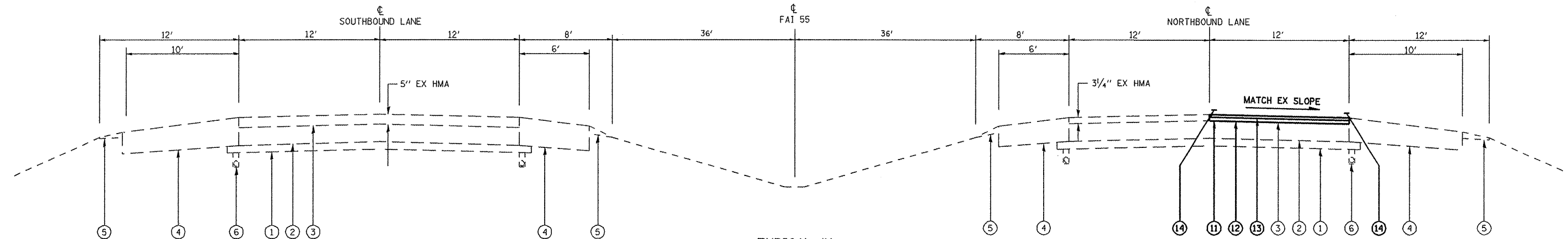
*\*Specialty Items*

REVISIONS		ILLINOIS DEPARTMENT OF TRANSPORTATION SUMMARY OF QUANTITIES FAI 55 SECTION D6 INTERMITTENT RS 2010 MACOUPIN COUNTY
NAME	DATE	
SCALE: NOT DRAWN TO SCALE	DRAWN BY	
DATE	CHECKED BY	

c:\p\work\p\1007\1\ALSHL\INR\08162731\0672015-akt-1004.dgn  
 Jul-31-2009 08:07:09PM  
 \*REF:01

F.A.I. RTE.	SECTION	COUNTY	TOTAL SHEETS	SHEET NO.
55	*	MACOUPIN	8	4
STA. TO STA.				
FED. ROAD DIST. NO.		ILLINOIS	FED. AID PROJECT	

• D6 INTERMITTENT RS 2010



TYPICAL #1  
FAI - 55

NB STA 614+00 TO STA 635+00  
NB STA 645+00 TO STA 664+00

c:\pwwork\p\10071\10071.dwg 08/15/2010 10:06:27 AM 72D15-ent-typical1a.dgn  
 2010-08-15 10:06:27 AM 10/11/2010

EXISTING LEGEND	PROPOSED LEGEND
① EX GRANULAR MATERIAL 4"	⑪ PR HOT-MIX ASPHALT SURFACE REMOVAL, 3/4"
② EX CRPCC 9"	⑫ PR POLYMERIZED HOT-MIX ASPHALT LEVELING BINDER (MACHINE METHOD), N105 1 3/4"
③ EX HOT-MIX ASPHALT SURFACE COURSE (VARIES 3/4" TO 5")	⑬ PR POLYMERIZED HOT-MIX ASPHALT SURF CSE, MIX "E" N105 1 1/2"
④ EX HOT-MIX ASPHALT SHOULDERS (THICKNESS VARIES)	⑭ PR URETHANE PAVEMENT MARKING - LINE 5"
⑤ EX AGGREGATE SHOULDERS	
⑥ EX PIPE UNDERDRAINS 4"	

REVISIONS	
NAME	DATE

ILLINOIS DEPARTMENT OF TRANSPORTATION  
**TYPICAL SECTIONS**  
 FAI 55  
 SECTION D6 INTERMITTENT RS 2010  
 MACOUPIN COUNTY  
 SCALE: NOT DRAWN TO SCALE  
 DATE: \_\_\_\_\_ DRAWN BY: \_\_\_\_\_  
 CHECKED BY: \_\_\_\_\_

CONTRACT 72D15

F.A.I. RTE.	SECTION	COUNTY	TOTAL SHEETS	SHEET NO.
55	*	MACOUPIN	8	5
STA.		TO STA.		
FED. ROAD DIST. NO.		ILLINOIS FED. AID PROJECT		

• D6 INTERMITTENT RS 2010

PAVING SCHEDULE

LOCATION	PAVEMENT WIDTH (FOOT)	HMA SURF REM 3 1/4" (SQ YD)	BIT MATL PR CT (TON)	LEVEL BINDER DEPTH (INCHES)	SURFACE DEPTH (INCHES)	LEVEL BINDER N105 (TON)	SURFACE N105 (TON)
I-55 MAINLINE NORTHBOUND							
STA 614+00.00 TO STA 635+00.00	12	2,800.00	1.06	1.75	1.50	274.40	235.20
STA 645+00.00 TO STA 664+00.00	12	2,533.33	0.96	1.75	1.50	248.27	212.80
TOTAL		5,333.33	2.02			522.67	448.00

PAVEMENT MARKING SCHEDULE

LOCATION	LENGTH (FOOT)	URETHANE PAVT MARK LINE - 5"			SHORT TERM PAVT MK (FOOT)	WORK ZONE PAVT MARK REM (SQ FT)	RAISED REFL REM (EACH)	RAISED REFL (EACH)
		EDGE LINE (FOOT)	CENTER LINE (FOOT)	TOTAL (FOOT)				
I-55 MAINLINE NORTHBOUND								
STA 614+00.00 TO STA 635+00.00	2,100.00	2,100.00	530.00	2,630.00	294.00	98.00	27	27
STA 645+00.00 TO STA 664+00.00	1,900.00	1,900.00	480.00	2,380.00	266.00	88.67	24	24
TOTAL		4,000.00	1,010.00	5,010.00	560.00	186.67	51	51

REVISIONS	
NAME	DATE

ILLINOIS DEPARTMENT OF TRANSPORTATION  
**SCHEDULE OF QUANTITIES**  
 FAI 55  
 SECTION D6 INTERMITTENT RS 2010  
 MACOUPIN COUNTY

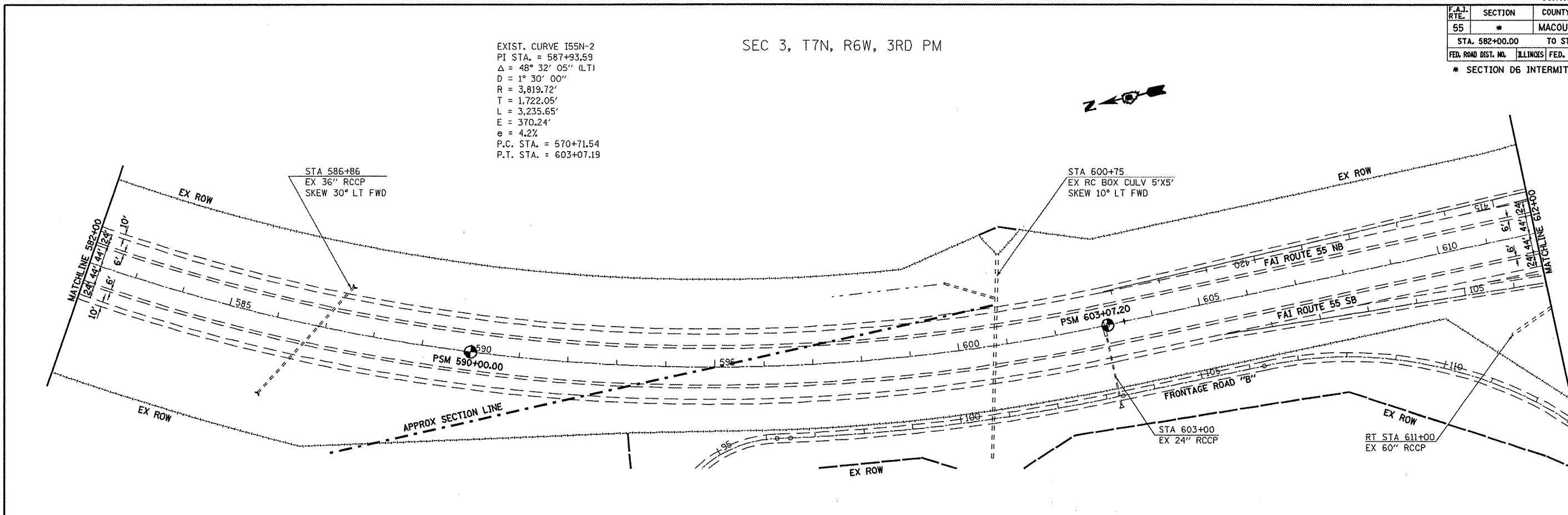
SCALE \_\_\_\_\_ DRAWN BY \_\_\_\_\_  
 DATE \_\_\_\_\_ CHECKED BY \_\_\_\_\_

C:\p\mca\p\007\LAUCH\INR\00152731\0672015-int-act-dgn  
 5/1/2016 2:08:07 PM 0/1/12PM  
 MREB

F.A.I. RTE.	SECTION	COUNTY	TOTAL SHEETS	SHEET NO.
55	*	MACOUPIN	8	6
STA. 582+00.00 TO STA. 642+00.00				
ILLINOIS FED. AID PROJECT				
* SECTION D6 INTERMITTENT RS 2010				

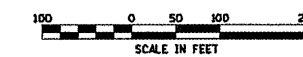
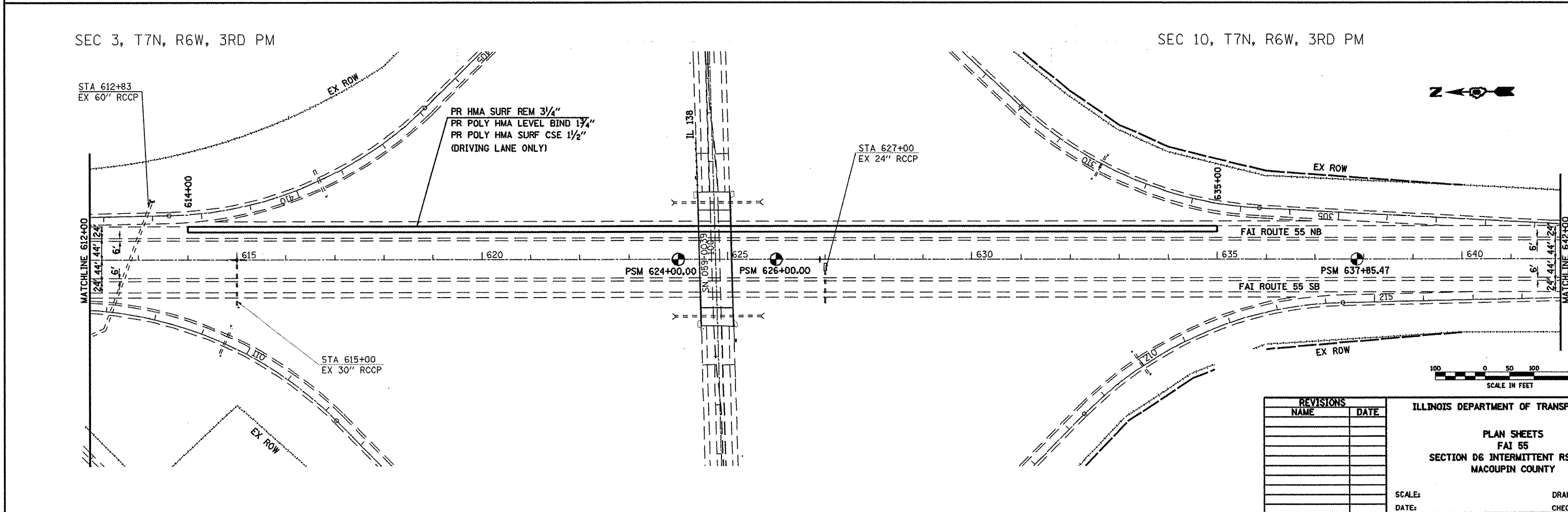
EXIST. CURVE I65N-2  
 PI STA. = 587+93.59  
 $\Delta = 48^\circ 32' 05''$  (LT)  
 $D = 1^\circ 30' 00''$   
 $R = 3,819.72'$   
 $T = 1,722.05'$   
 $L = 3,235.65'$   
 $E = 370.24'$   
 $e = 4.2\%$   
 P.C. STA. = 570+71.54  
 P.T. STA. = 603+07.19

SEC 3, T7N, R6W, 3RD PM



SEC 3, T7N, R6W, 3RD PM

SEC 10, T7N, R6W, 3RD PM



REVISIONS	
NAME	DATE

ILLINOIS DEPARTMENT OF TRANSPORTATION  
  
 PLAN SHEETS  
 FAI 55  
 SECTION D6 INTERMITTENT RS 2010  
 MACOUPIN COUNTY  
  
 SCALE: \_\_\_\_\_ DRAWN BY \_\_\_\_\_  
 DATE: \_\_\_\_\_ CHECKED BY \_\_\_\_\_

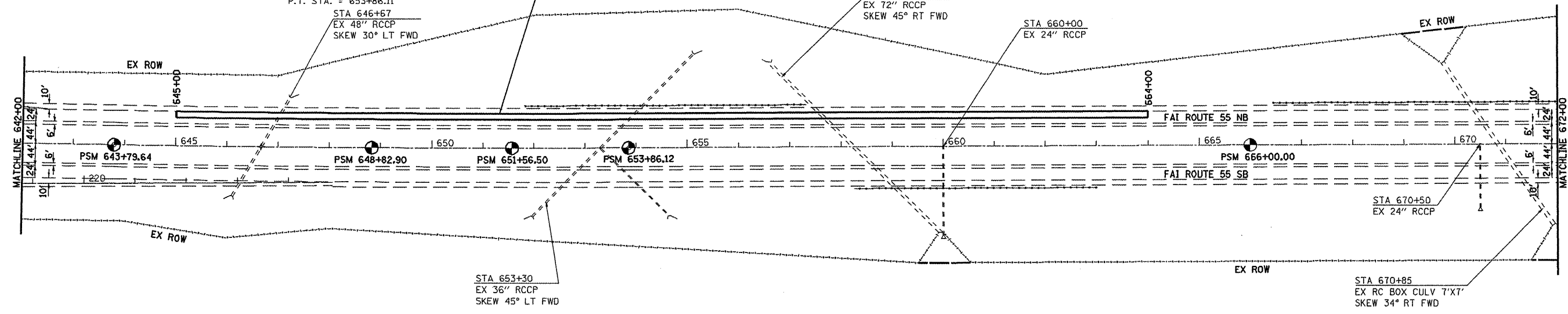
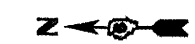
c:\pwworkspace\PROJECTS\ILLINOIS\0672015\0672015-shr-double-plan-100.dgn  
 Jul-31-2009 08:17:18PM  
 \*REF01

F.A.J. RTE.	SECTION	COUNTY	TOTAL SHEETS	SHEET NO.
55	*	MACOUPIN	8	7
STA. 642+00.00			TO STA. 702+00.00	
FED. ROAD DIST. NO.		ILLINOIS FED. AID PROJECT		
* SECTION D6 INTERMITTENT RS 2010				

SEC 10, T7N, R6W, 3RD PM

EXIST. CURVE I55N-3  
 PI STA. = 648+82.89  
 $\Delta = 1^\circ 20' 31''$  (LT)  
 $D = 0^\circ 08' 00''$   
 $R = 42,971.84'$   
 $T = 503.26'$   
 $L = 1,006.48'$   
 $E = 2.95'$   
 $e = \text{NONE}$   
 P.C. STA. = 643+79.63  
 P.T. STA. = 653+86.11

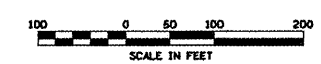
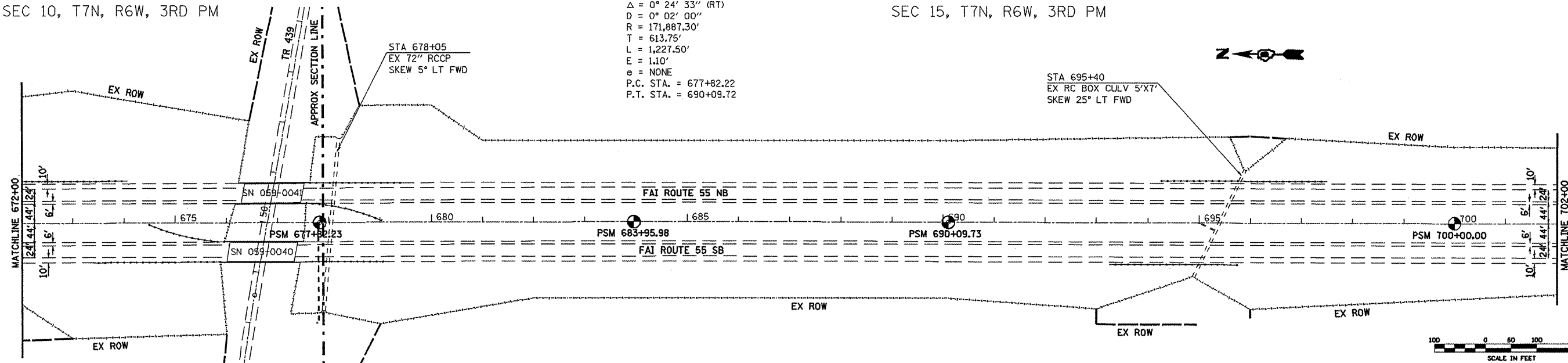
PR HMA SURF REM 3/4"  
 PR POLY HMA LEVEL BIND 1 1/4"  
 PR POLY HMA SURF CSE 1 1/2"  
 (DRIVING LANE ONLY)



SEC 10, T7N, R6W, 3RD PM

EXIST. CURVE I55N-4  
 PI STA. = 683+95.97  
 $\Delta = 0^\circ 24' 33''$  (RT)  
 $D = 0^\circ 02' 00''$   
 $R = 171,887.30'$   
 $T = 613.75'$   
 $L = 1,227.50'$   
 $E = 1.10'$   
 $e = \text{NONE}$   
 P.C. STA. = 677+82.22  
 P.T. STA. = 690+09.72

SEC 15, T7N, R6W, 3RD PM



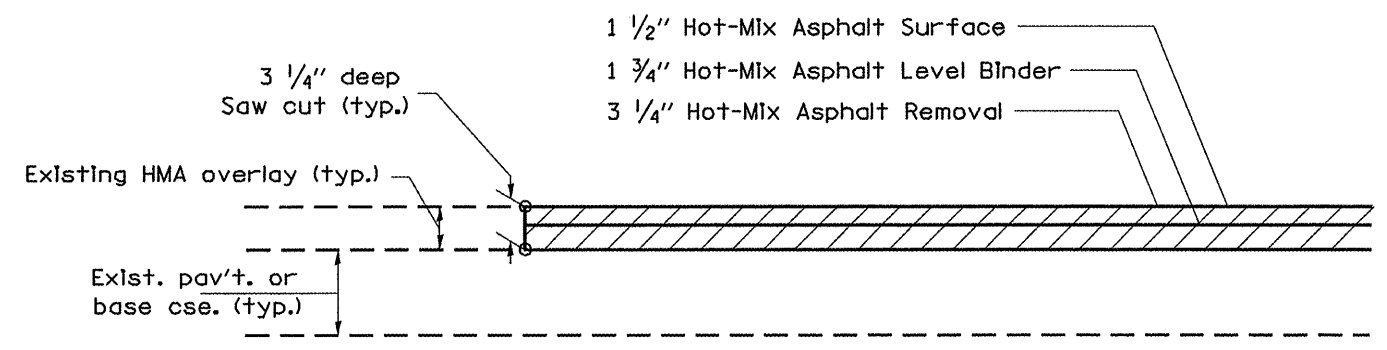
REVISIONS	
NAME	DATE

ILLINOIS DEPARTMENT OF TRANSPORTATION  
 PLAN SHEETS  
 FAI 55  
 SECTION D6 INTERMITTENT RS 2010  
 MACOUPIN COUNTY  
 SCALE: \_\_\_\_\_ DRAWN BY \_\_\_\_\_  
 DATE: \_\_\_\_\_ CHECKED BY \_\_\_\_\_

ca:\p-work\work\WDDOT\LAUGHLIN\06152731\0672D15-sht-double-pln-100.dgn  
 Jul-31-2009 03:17:18PM  
 \*REF01

F.A.J. RTE.	SECTION	COUNTY	TOTAL SHEETS	SHEET NO.
55	*	MACOUPIN	8	8
STA.		TO STA.		
FED. ROAD DIST. NO.	ILLINOIS	FED. AID PROJECT		

• D6 INTERMITTENT RS 2010



BUTT JOINT DETAIL

NOTES:

THE SAW CUTS FOR BUTT JOINTS SHALL BE INCLUDED IN THE COST OF HOT-MIX ASPHALT SURFACE REMOVAL 3 1/4".

REVISIONS		ILLINOIS DEPARTMENT OF TRANSPORTATION
NAME	DATE	
		<p><b>BUTT JOINT DETAIL</b></p> <p>FAI 55</p> <p>SECTION D6 INTERMITTENT RS 2010</p> <p>MACOUPIN COUNTY</p> <p>SCALE: NOT DRAWN TO SCALE      DRAWN BY</p> <p>DATE      CHECKED BY</p>