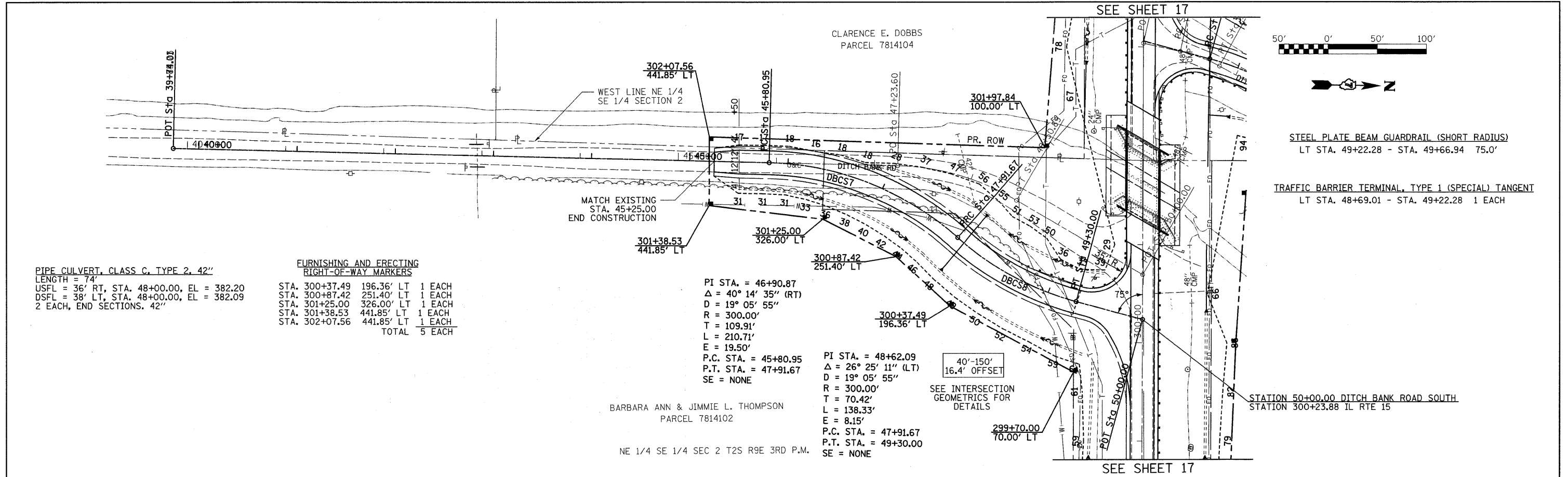


DATE	
BY	
PLAN	
NO.	
DATE	
BY	
PROFILE	
NO.	

DATE	
BY	
PROFILE	
NO.	
DATE	
BY	
PLAN	
NO.	



PIPE CULVERT, CLASS C, TYPE 2, 42"
 LENGTH = 74'
 USFL = 36' RT, STA. 48+00.00, EL = 382.20
 DSFL = 38' LT, STA. 48+00.00, EL = 382.09
 2 EACH, END SECTIONS, 42"

FURNISHING AND ERECTING
 RIGHT-OF-WAY MARKERS

STA. 300+37.49	196.36' LT	1 EACH
STA. 300+87.42	251.40' LT	1 EACH
STA. 301+25.00	326.00' LT	1 EACH
STA. 301+38.53	441.85' LT	1 EACH
STA. 302+07.56	441.85' LT	1 EACH
TOTAL		5 EACH

PI STA. = 46+90.87
 $\Delta = 40^\circ 14' 35''$ (RT)
 $D = 19^\circ 05' 55''$
 $R = 300.00'$
 $T = 109.91'$
 $L = 210.71'$
 $E = 19.50'$
 P.C. STA. = 45+80.95
 P.T. STA. = 47+91.67
 SE = NONE

PI STA. = 48+62.09
 $\Delta = 26^\circ 25' 11''$ (LT)
 $D = 19^\circ 05' 55''$
 $R = 300.00'$
 $T = 70.42'$
 $L = 138.33'$
 $E = 8.15'$
 P.C. STA. = 47+91.67
 P.T. STA. = 49+30.00
 SE = NONE

BARBARA ANN & JIMMIE L. THOMPSON
 PARCEL 7814102

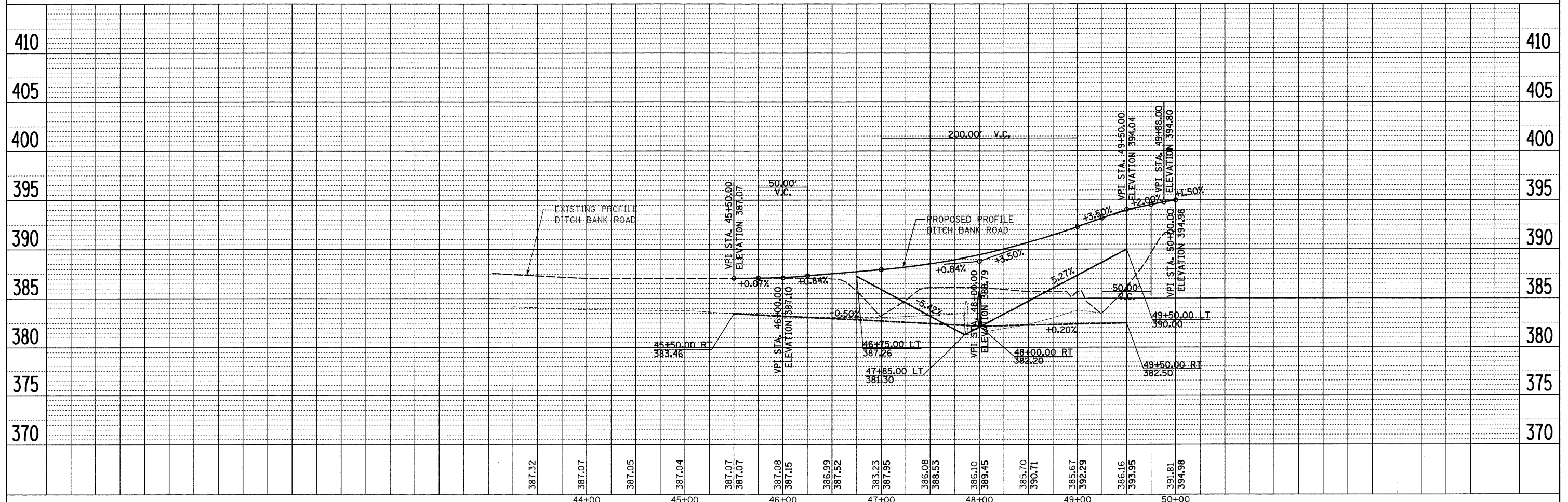
NE 1/4 SE 1/4 SEC 2 T2S R9E 3RD P.M.



STEEL PLATE BEAM GUARDRAIL (SHORT RADIUS)
 LT STA. 49+22.28 - STA. 49+66.94 75.0'

TRAFFIC BARRIER TERMINAL, TYPE 1 (SPECIAL) TANGENT
 LT STA. 48+69.01 - STA. 49+22.28 1 EACH

STATION 50+00.00 DITCH BANK ROAD SOUTH
 STATION 300+23.88 IL RTE 15



FILE NAME =	USER NAME = rcook	DESIGNED -	REVISED -	STATE OF ILLINOIS DEPARTMENT OF TRANSPORTATION	DITCH BANK ROAD SOUTH	F.A.P. RTE.	SECTION	COUNTY	TOTAL SHEETS	SHEET NO.
P:\0340601_04_FIN\060055\Drawings\plan&profile\SideRoads.dgn		DRAWN -	REVISED -			823	(22BY-1,22BY2,22BR)B-1	WAYNE	142	18
PLOT SCALE = 50.0000 / IN.		CHECKED -	REVISED -			CONTRACT NO. 74238				
PLOT DATE = 3/26/2009		DATE -	REVISED -			FED. ROAD DIST. NO.	ILLINOIS	FED. AID PROJECT		