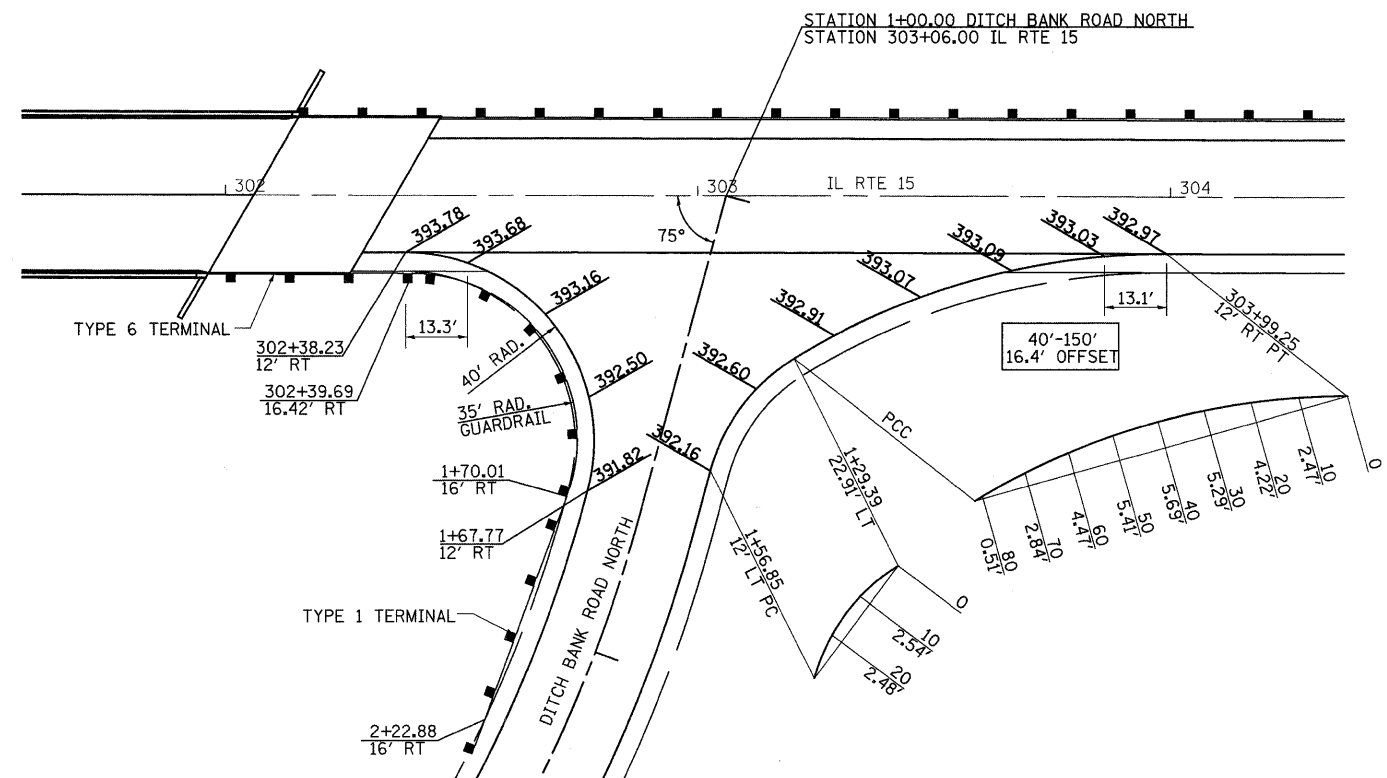


STATION 50+00.00 DITCH BANK ROAD SOUTH  
STATION 300+23.88 IL RTE 15



STATION 1+00.00 DITCH BANK ROAD NORTH  
STATION 303+06.00 IL RTE 15

**LEGEND**

XXX.XX INDICATES PROPOSED GRADE ELEVATION  
INTERVAL AROUND CURVES IS 20'  
UNLESS NOTED

FILE NAME =	USER NAME = rook	DESIGNED -	REVISED -
P:\0340601.04.FIN\0960055\Drawings\IntersectionGeometrics.dgn		DRAWN -	REVISED -
PLOT SCALE = 20.0000' / IN.		CHECKED -	REVISED -
PLOT DATE = 3/26/2009		DATE -	REVISED -

**STATE OF ILLINOIS  
DEPARTMENT OF TRANSPORTATION**

**INTERSECTION GEOMETRICS**

SCALE: SHEET NO. 1 OF 1 SHEETS STA. TO STA.

F.A.P. RTE.	SECTION	COUNTY	TOTAL SHEETS	SHEET NO.
823	(22BY-1,22BY2,22BR)B-1	WAYNE	142	29
CONTRACT NO. 74238				
FED. ROAD DIST. NO.		ILLINOIS FED. AID PROJECT		